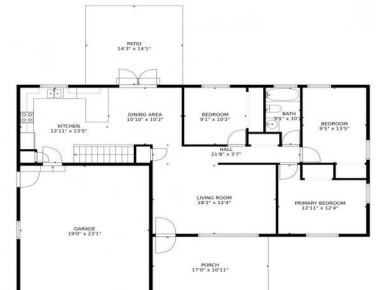




2929 w 13th street, Greeley, CO 80634 - Main Level



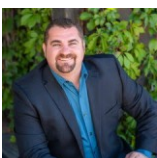
Single Family

2328 SQFT

4 Beds

2 Baths

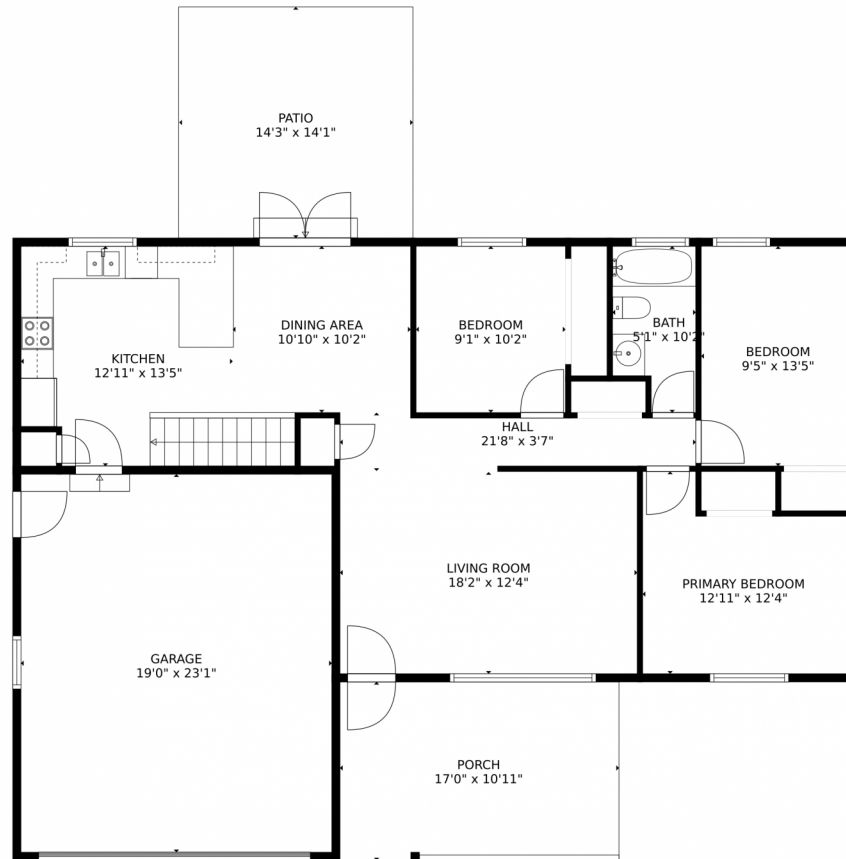
2 Car



Brad Inhulsen
970-584-4144
brad@searsrealestate.com



2929 w 13th street, Greeley, CO 80634 – Main Level



TOTAL: 1771 sq. ft

Below Ground: 690 sq. ft, FLOOR 2: 1081 sq. ft

EXCLUDED AREAS: ELECTRICAL ROOM: 57 sq. ft, LAUNDRY: 279 sq. ft, PORCH: 185 sq. ft,
PATIO: 201 sq. ft, GARAGE: 437 sq. ft

MEASUREMENTS CALCULATED BY V1Photos.COM ARE DEEMED HIGHLY RELIABLE BUT NOT GUARANTEED.



Disclaimer: Sizes and Dimensions are Approximate, Actual May Vary.

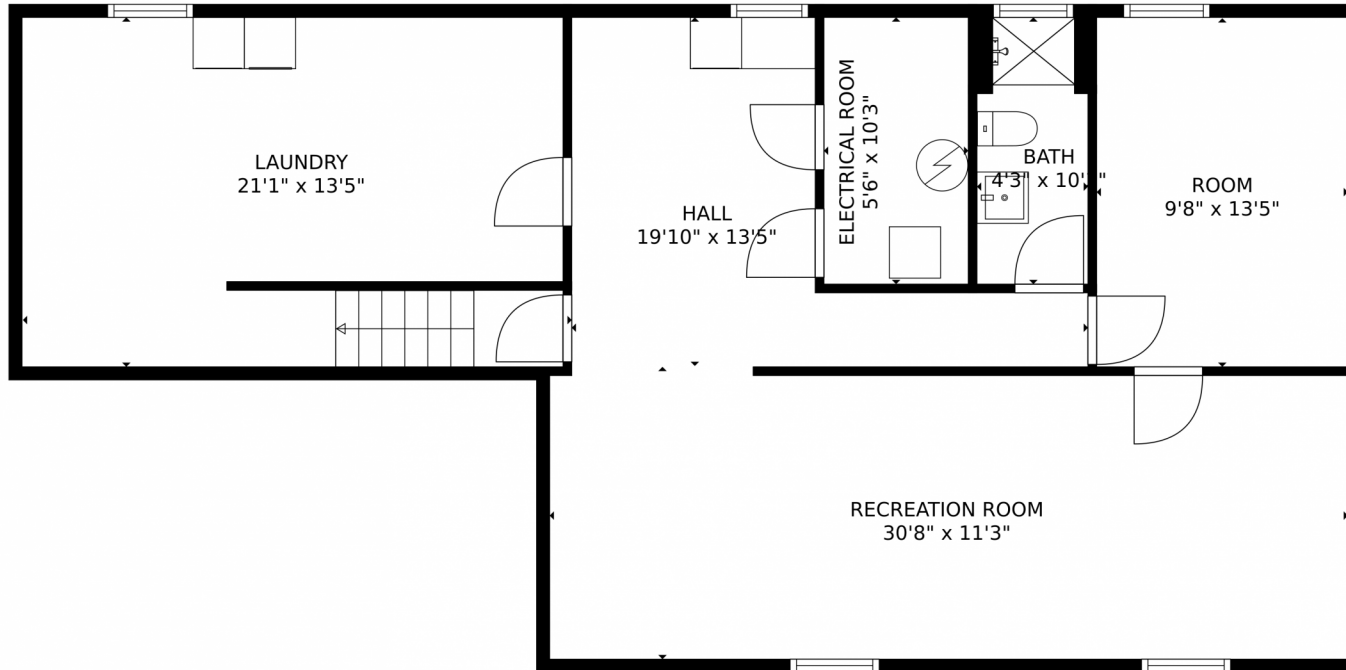


Brad Inhulsen
970-584-4144
brad@searsrealestate.com



Scan code
for more
property
details





TOTAL: 1771 sq. ft
Below Ground: 690 sq. ft, FLOOR 2: 1081 sq. ft
EXCLUDED AREAS: ELECTRICAL ROOM: 57 sq. ft, LAUNDRY: 279 sq. ft, PORCH: 185 sq. ft,
PATIO: 201 sq. ft, GARAGE: 437 sq. ft
MEASUREMENTS CALCULATED BY V1Photos.com ARE DEEMED HIGHLY RELIABLE BUT NOT GUARANTEED.



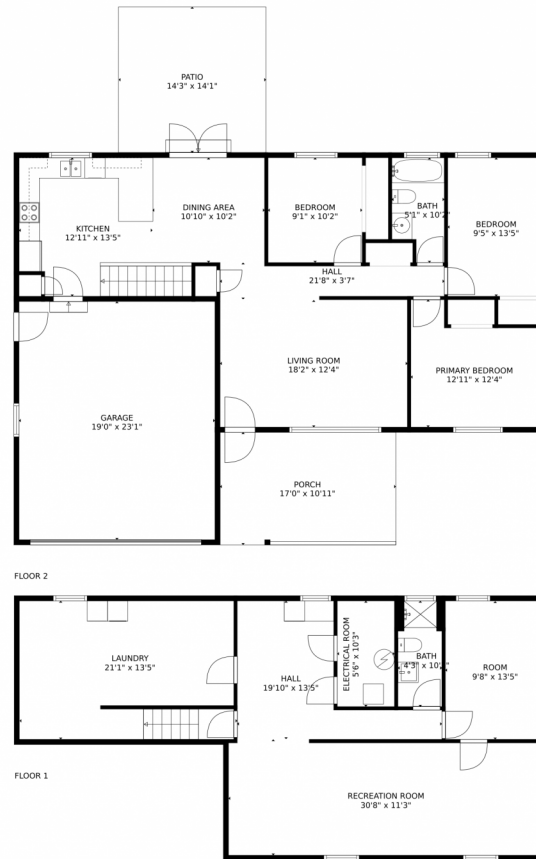
Disclaimer: Sizes and Dimensions are Approximate, Actual May Vary.



Brad Inhulsen
970-584-4144
brad@searsrealestate.com



2929 w 13th street, Greeley, CO 80634 – All Levels



TOTAL: 1771 sq. ft
Below Ground: 690 sq. ft, FLOOR 2: 1081 sq. ft
EXCLUDED AREAS: ELECTRICAL ROOM: 57 sq. ft, LAUNDRY: 279 sq. ft, PORCH: 185 sq. ft,
PATIO: 201 sq. ft, GARAGE: 437 sq. ft
MEASUREMENTS CALCULATED BY V1Photos.com ARE DEEMED HIGHLY RELIABLE BUT NOT GUARANTEED.



Disclaimer: Sizes and Dimensions are Approximate, Actual May Vary.



Brad Inhulsen
970-584-4144
brad@searsrealestate.com



Scan code
for more
property
details

