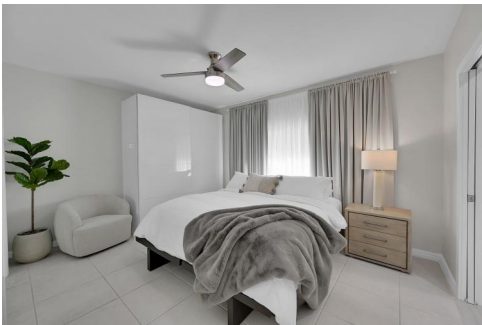




232 Avalon Avenue
Lauderdale-by-the-Sea, FL 33308



Single Family



1380 SQFT



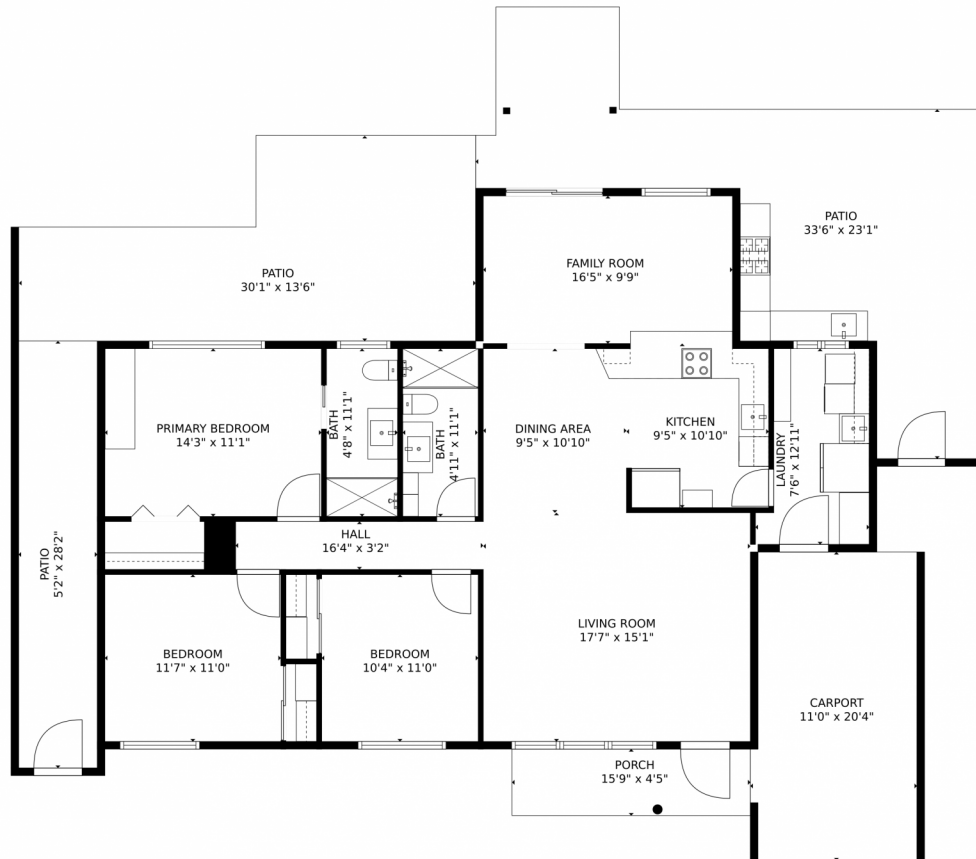
Rachael Barach
954-815-1418
rachael@rachaelbarach.com
<https://www.therachaelbarachgroup.com/>



Scan code
for more
property
details



232 Avalon Avenue, Lauderdale-by-the-Sea, FL 33308 — Main Floor



GROSS INTERNAL AREA
FLOOR 1: 1371 sq. ft.
EXCLUDED AREAS: PATIO: 904 sq. ft, PORCH: 69 sq. ft, CARPORT: 215 sq. ft.
TOTAL: 1371 sq. ft.
MEASUREMENTS CALCULATED BY V1Photos.COM ARE DEEMED HIGHLY RELIABLE BUT NOT GUARANTEED.



Disclaimer: Sizes and Dimensions are Approximate, Actual May Vary.



Rachael Barach

954-815-1418

rachael@rachaelbarach.com

<https://www.therachaelbarachgroup.com/>



Scan code
for more
property
details

