



303 North Cherrywood Drive
Lafayette, CO 80026



Single Family



2076 SQFT



4 Beds



2/1 Baths



2 Car



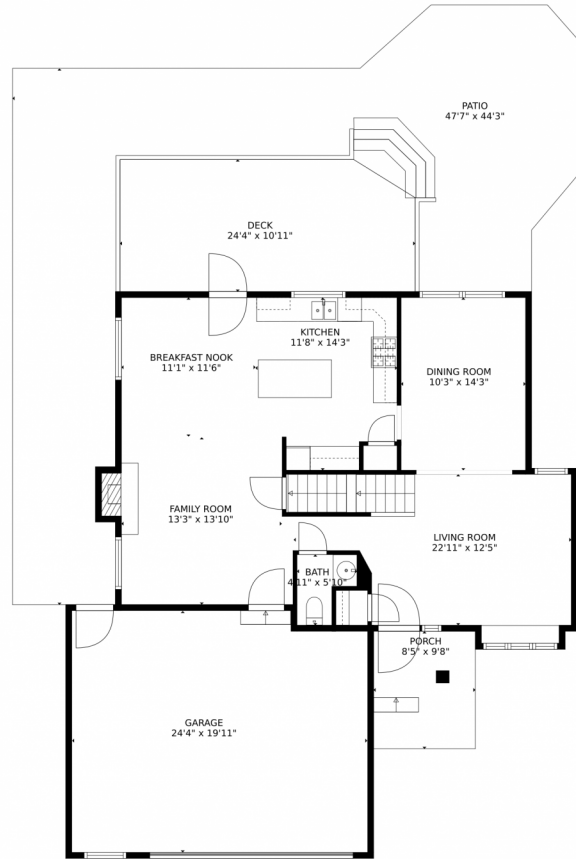
Carolyn Bleicher
303-219-1771
carolyn@carolynbleicher.com



Scan code
for more
property
details



303 North Cherrywood Drive, Lafayette, CO 80026 — Main Level



TOTAL: 1911 sq. ft

Below Ground: 0 sq. ft, FLOOR 2: 934 sq. ft, FLOOR 3: 977 sq. ft
EXCLUDED AREAS: UNFINISHED BASEMENT: 919 sq. ft, GARAGE: 476 sq. ft, PORCH: 81 sq. ft,
PATIO: 870 sq. ft, DECK: 257 sq. ft, FIREPLACE: 4 sq. ft

MEASUREMENTS CALCULATED BY V1Photos.com ARE DEEMED HIGHLY RELIABLE BUT NOT GUARANTEED.



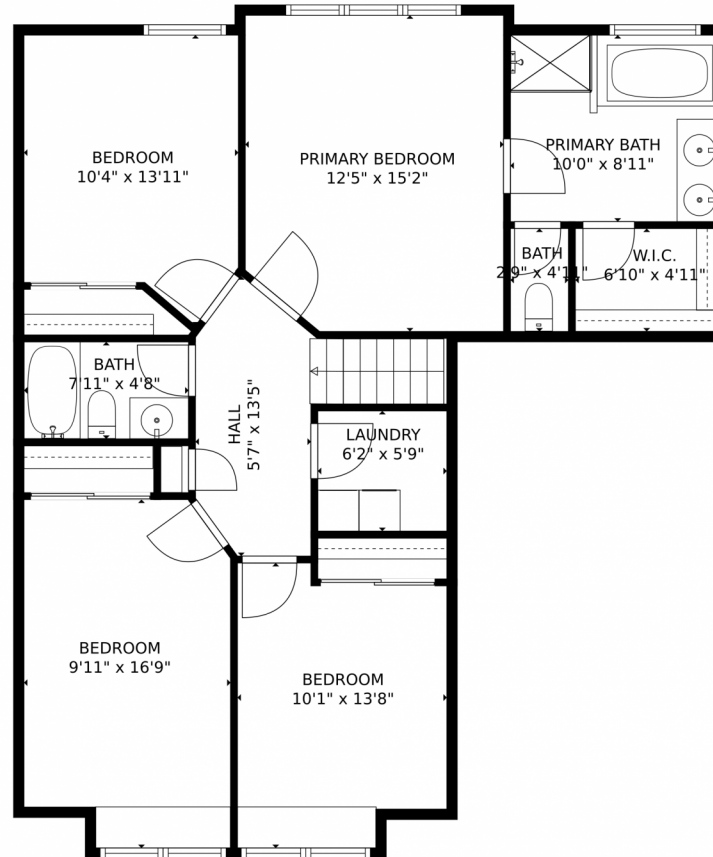
Disclaimer: Sizes and Dimensions are Approximate, Actual May Vary.



Carolyn Bleicher
303-219-1771
carolyn@carolynbleicher.com



303 North Cherrywood Drive, Lafayette, CO 80026 – Upper Level



TOTAL: 1911 sq. ft

Below Ground: 0 sq. ft, FLOOR 2: 934 sq. ft, FLOOR 3: 977 sq. ft
EXCLUDED AREAS: UNFINISHED BASEMENT: 919 sq. ft, GARAGE: 476 sq. ft, PORCH: 81 sq. ft,
PATIO: 870 sq. ft, DECK: 257 sq. ft, FIREPLACE: 4 sq. ft

MEASUREMENTS CALCULATED BY V1Photos.com ARE DEEMED HIGHLY RELIABLE BUT NOT GUARANTEED.



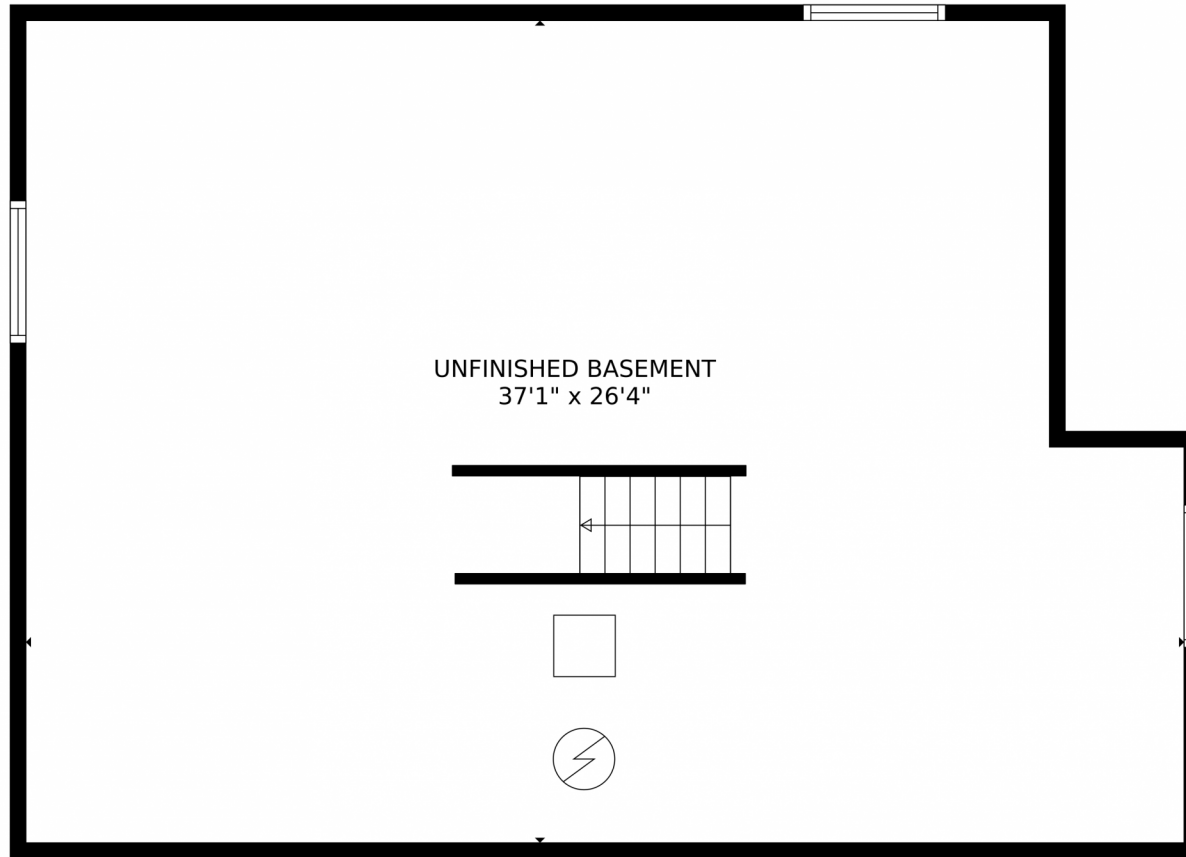
Disclaimer: Sizes and Dimensions are Approximate, Actual May Vary.



Carolyn Bleicher
303-219-1771
carolyn@carolynbleicher.com



303 North Cherrywood Drive, Lafayette, CO 80026 — Lower Level



TOTAL: 1911 sq. ft
Below Ground: 0 sq. ft, FLOOR 2: 934 sq. ft, FLOOR 3: 977 sq. ft
EXCLUDED AREAS: UNFINISHED BASEMENT: 919 sq. ft, GARAGE: 476 sq. ft, PORCH: 81 sq. ft,
PATIO: 870 sq. ft, DECK: 257 sq. ft, FIREPLACE: 4 sq. ft
MEASUREMENTS CALCULATED BY V1Photos.com ARE DEEMED HIGHLY RELIABLE BUT NOT GUARANTEED.




Disclaimer: Sizes and Dimensions are Approximate, Actual May Vary.



Carolyn Bleicher
303-219-1771
carolyn@carolynbleicher.com



Scan code for more property details



303 North Cherrywood Drive, Lafayette, CO 80026 – All Levels



TOTAL: 1911 sq. ft

Below Ground: 0 sq. ft, FLOOR 2: 934 sq. ft, FLOOR 3: 977 sq. ft

EXCLUDED AREAS: UNFINISHED BASEMENT: 919 sq. ft, GARAGE: 476 sq. ft, PORCH: 81 sq. ft, PATIO: 870 sq. ft, DECK: 257 sq. ft, FIREPLACE: 4 sq. ft

MEASUREMENTS CALCULATED BY V1Photos.COM ARE DEEMED HIGHLY RELIABLE BUT NOT GUARANTEED.



Disclaimer: Sizes and Dimensions are Approximate, Actual May Vary.



Carolyn Bleicher
303-219-1771
carolyn@carolynbleicher.com



Scan code
for more
property
details

