

 Single Family  6570 SQFT  5 Beds  4/1 Baths  3 Car  0.28 Acre

PROPERTY DETAILS

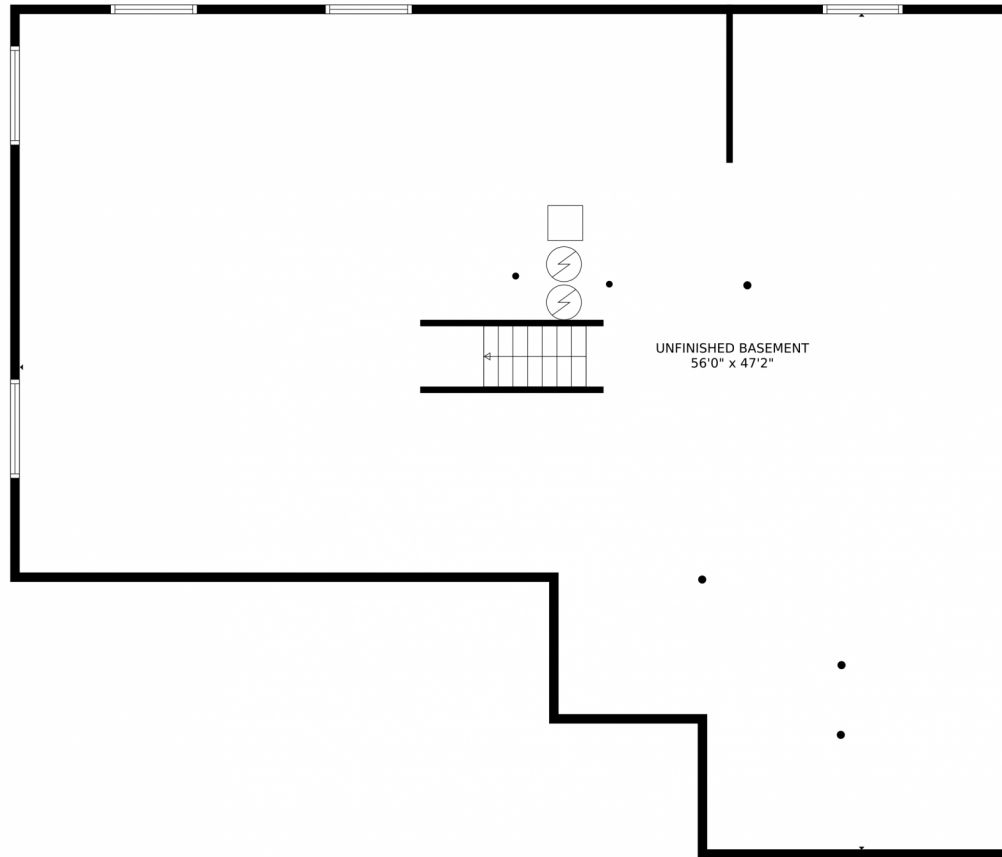
Welcome to this exceptional property in Sapphire Pointe/Maher Ranch, Castle Rock, CO. This single-family home offers 5 bedrooms, 4.5 bathrooms, and 6,570 sq ft of living space. The front facade is meticulously maintained with a garage and manicured lawn. Inside, the grand entrance foyer features a high ceiling and light hardwood flooring. The living room is tranquil with light-colored carpet, natural light, and a cozy fireplace. The chef's kitchen has stainless steel appliances, a double oven, and a spacious island. The adjacent dining area is elegant with a chandelier and raised ceiling. Upstairs, the primary bedroom has a fireplace, ensuite bathroom, and hardwood floors. The additional bedrooms are spacious and comfortable. Outside, there's a patio with a porch and a basketball court. The community offers parks, walking trails, and a community center. Conveniently located near shopping, dining, and entertainment. Don't miss out on this remarkable home. Schedule a showing today.



Andrea Bunker Marrese
303-870-2689
bunkerandrea@aol.com



6931 Sulfur Court, Castle Rock, CO 80108 – Lower Level



TOTAL: 4331 sq. ft
Below Ground: 0 sq. ft, FLOOR 2: 2131 sq. ft, FLOOR 3: 2200 sq. ft
EXCLUDED AREAS: UNFINISHED BASEMENT: 2105 sq. ft, GARAGE: 671 sq. ft, PORCH: 208 sq. ft,
PATIO: 636 sq. ft, OPEN TO BELOW: 435 sq. ft
MEASUREMENTS CALCULATED BY V1Photos.com ARE DEEMED HIGHLY RELIABLE BUT NOT GUARANTEED.



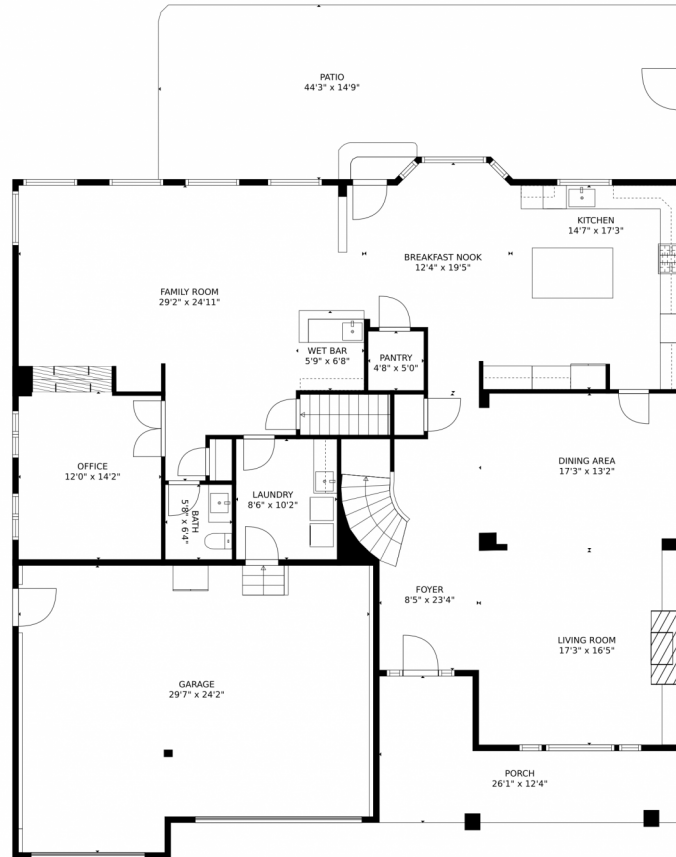
Disclaimer: Sizes and Dimensions are Approximate, Actual May Vary.



Andrea Bunker Marrese
303-870-2689
bunkerandrea@aol.com



6931 Sulfur Court, Castle Rock, CO 80108 – Main Level



TOTAL: 4331 sq. ft

Below Ground: 0 sq. ft, FLOOR 2: 2131 sq. ft, FLOOR 3: 2200 sq. ft
EXCLUDED AREAS: UNFINISHED BASEMENT: 2105 sq. ft, GARAGE: 671 sq. ft, PORCH: 208 sq. ft,
PATIO: 636 sq. ft, OPEN TO BELOW: 435 sq. ft

MEASUREMENTS CALCULATED BY V1Photos.COM ARE DEEMED HIGHLY RELIABLE BUT NOT GUARANTEED.



Disclaimer: Sizes and Dimensions are Approximate, Actual May Vary.



Andrea Bunker Marrese
303-870-2689
bunkerandrea@aol.com



6931 Sulfur Court, Castle Rock, CO 80108 – Upper Level



TOTAL: 4331 sq. ft

Below Ground: 0 sq. ft, FLOOR 2: 2131 sq. ft, FLOOR 3: 2200 sq. ft
EXCLUDED AREAS: UNFINISHED BASEMENT: 2105 sq. ft, GARAGE: 671 sq. ft, PORCH: 208 sq. ft,
PATIO: 636 sq. ft, OPEN TO BELOW: 435 sq. ft
MEASUREMENTS CALCULATED BY V1Photos.com ARE DEEMED HIGHLY RELIABLE BUT NOT GUARANTEED.

Disclaimer: Sizes and Dimensions are Approximate, Actual May Vary.

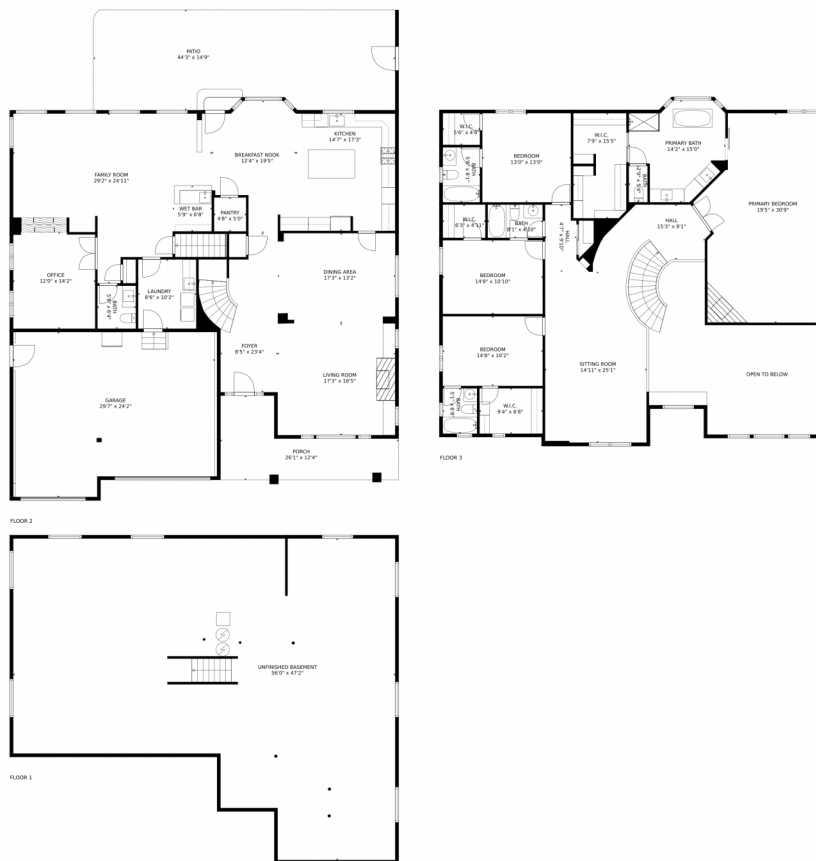


Andrea Bunker Marrese
303-870-2689
bunkerandrea@aol.com



Scan code
for more
property
details

6931 Sulfur Court, Castle Rock, CO 80108 – All Levels



TOTAL: 4331 sq. ft
Below Ground: 0 sq. ft, FLOOR 2: 2131 sq. ft, FLOOR 3: 2200 sq. ft
EXCLUDED AREAS: UNFINISHED BASEMENT: 2105 sq. ft, GARAGE: 671 sq. ft, PORCH: 208 sq. ft,
PATIO: 636 sq. ft, OPEN TO BELOW: 435 sq. ft
MEASUREMENTS CALCULATED BY V1Photos.com ARE DEEMED HIGHLY RELIABLE BUT NOT GUARANTEED.



Disclaimer: Sizes and Dimensions are Approximate, Actual May Vary.



Andrea Bunker Marrese
303-870-2689
bunkerandrea@aol.com

