




 Single Family

 2400 SQFT

 4 Beds

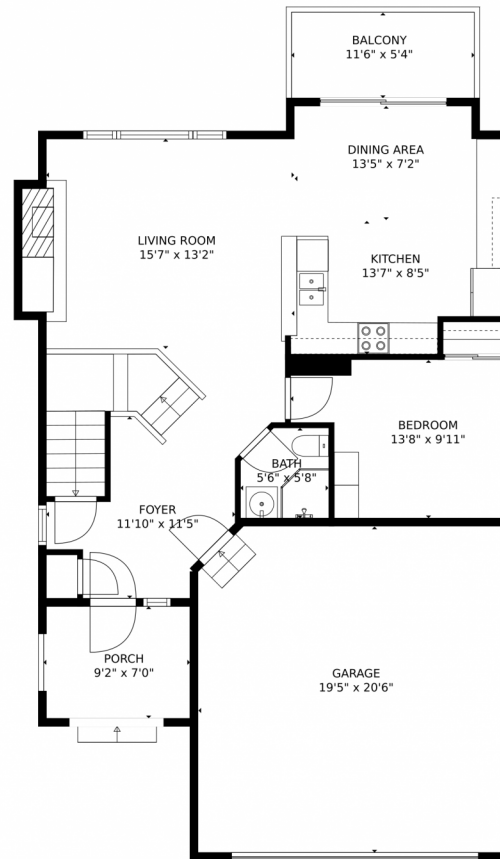
 3/1 Baths



Taylor Haas
303-665-7368
taylorh@coloradorpm.com
<https://www.coloradorpm.com/available-rental-properties-denver>



6684 Bean Mountain Lane, Boulder, CO 80301 — Main Level



TOTAL: 2235 sq. ft

Below Ground: 509 sq. ft, FLOOR 2: 776 sq. ft, FLOOR 3: 950 sq. ft
EXCLUDED AREAS: ELECTRICAL ROOM: 53 sq. ft, ROOM: 132 sq. ft, PATIO: 217 sq. ft,
GARAGE: 395 sq. ft, PORCH: 64 sq. ft, BALCONY: 62 sq. ft,
OPEN TO BELOW: 217 sq. ft

MEASUREMENTS CALCULATED BY V1Photos.COM ARE DEEMED HIGHLY RELIABLE BUT NOT GUARANTEED.



Disclaimer: Sizes and Dimensions are Approximate, Actual May Vary.



Taylor Haas

303-665-7368

taylorh@coloradorpm.com

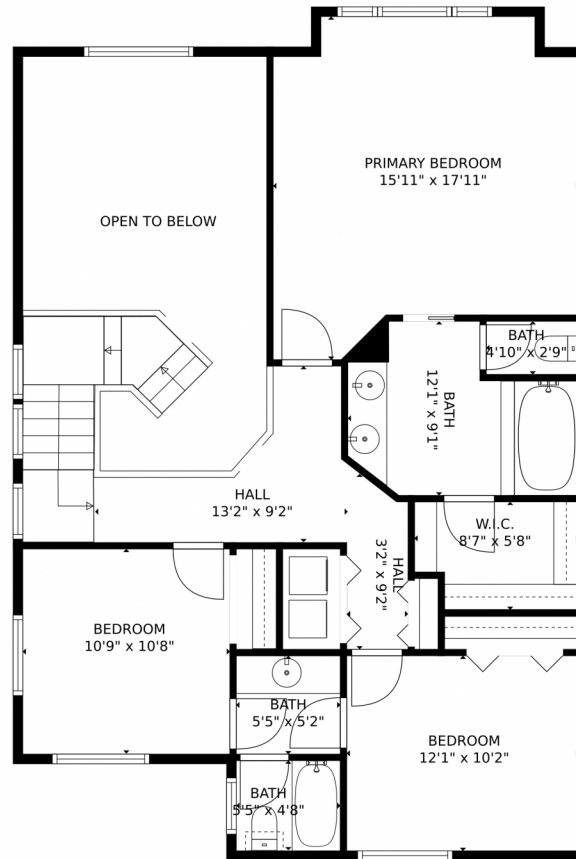
<https://www.coloradorpm.com/available-rental-properties-denver>



Scan code
for more
property
details



6684 Bean Mountain Lane, Boulder, CO 80301 – Upper Level



TOTAL: 2235 sq. ft

Below Ground: 509 sq. ft, FLOOR 2: 776 sq. ft, FLOOR 3: 950 sq. ft
EXCLUDED AREAS: ELECTRICAL ROOM: 53 sq. ft, ROOM: 132 sq. ft, PATIO: 217 sq. ft,
GARAGE: 395 sq. ft, PORCH: 64 sq. ft, BALCONY: 62 sq. ft,
OPEN TO BELOW: 217 sq. ft

MEASUREMENTS CALCULATED BY V1Photos.com ARE DEEMED HIGHLY RELIABLE BUT NOT GUARANTEED.



Disclaimer: Sizes and Dimensions are Approximate, Actual May Vary.



Taylor Haas

303-665-7368

taylorh@coloradorpm.com

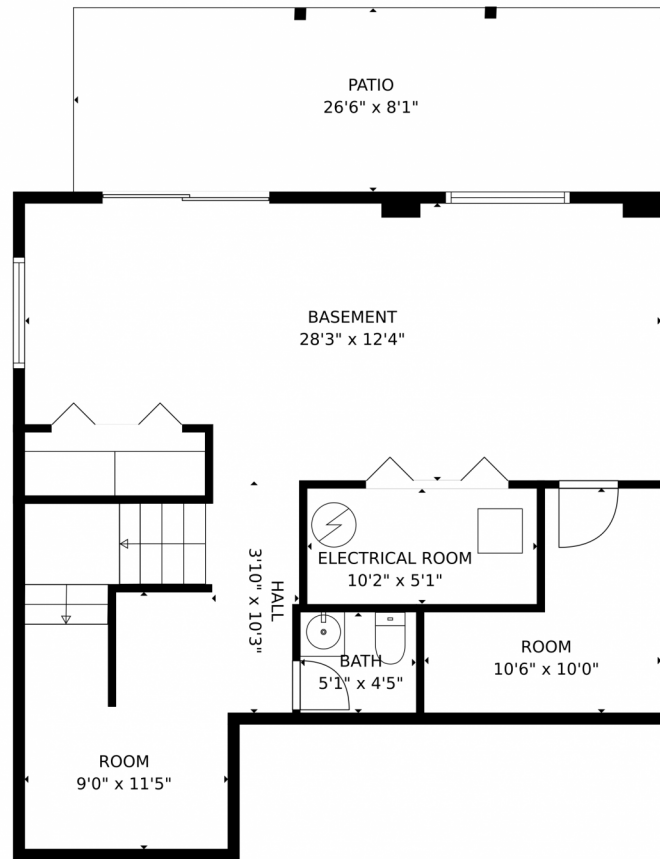
<https://www.coloradorpm.com/available-rental-properties-denver>



Scan code
for more
property
details



6684 Bean Mountain Lane, Boulder, CO 80301 – Lower Level



TOTAL: 2235 sq. ft

Below Ground: 509 sq. ft, FLOOR 2: 776 sq. ft, FLOOR 3: 950 sq. ft
EXCLUDED AREAS: ELECTRICAL ROOM: 53 sq. ft, ROOM: 132 sq. ft, PATIO: 217 sq. ft,
GARAGE: 395 sq. ft, PORCH: 64 sq. ft, BALCONY: 62 sq. ft,
OPEN TO BELOW: 217 sq. ft

MEASUREMENTS CALCULATED BY V1PHOTOS.COM ARE DEEMED HIGHLY RELIABLE BUT NOT GUARANTEED.



Disclaimer: Sizes and Dimensions are Approximate, Actual May Vary.



Taylor Haas

303-665-7368

taylorh@coloradorpm.com

<https://www.coloradorpm.com/available-rental-properties-denver>



Scan code
for more
property
details



6684 Bean Mountain Lane, Boulder, CO 80301 – All Level



TOTAL: 2235 sq. ft

Below Ground: 509 sq. ft, FLOOR 2: 776 sq. ft, FLOOR 3: 950 sq. ft
EXCLUDED AREAS: ELECTRICAL ROOM: 53 sq. ft, ROOM: 132 sq. ft, PATIO: 217 sq. ft,
GARAGE: 395 sq. ft, PORCH: 64 sq. ft, BALCONY: 62 sq. ft,
OPEN TO BELOW: 217 sq. ft

MEASUREMENTS CALCULATED BY V1Photos.COM ARE DEEMED HIGHLY RELIABLE BUT NOT GUARANTEED.



Disclaimer: Sizes and Dimensions are Approximate, Actual May Vary.



Taylor Haas

303-665-7368

taylorh@coloradorpm.com

<https://www.coloradorpm.com/available-rental-properties-denver>



Scan code
for more
property
details

