




 Single Family

 1716 SQFT

 4 Beds

 3 Baths

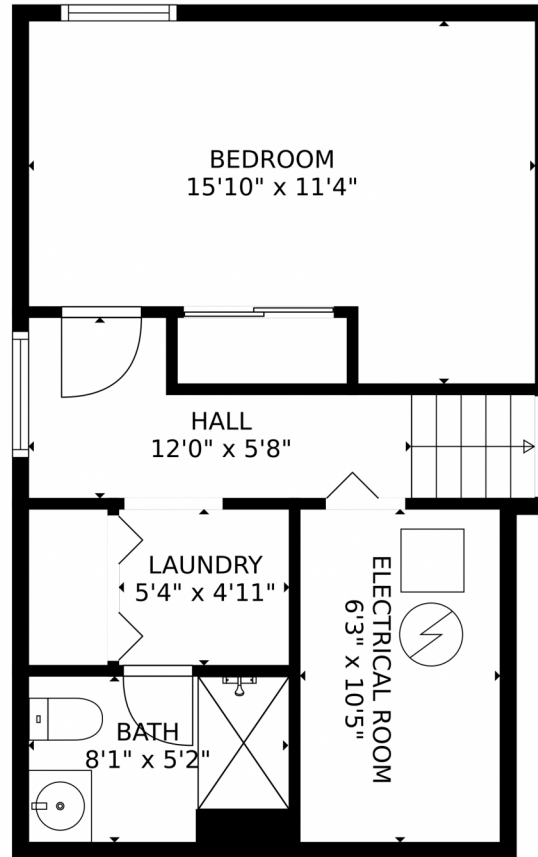
 2 Car



Jordan Kermes
952-956-2958
jkermes@wedgewoodhomesrealty.com
<https://colorado.wedgewoodhomesrealty.com>



1352 Coolcrest Drive, Colorado Springs, CO 80906 — Basement



TOTAL: 1628 sq. ft

Below Ground: 330 sq. ft, FLOOR 2: 286 sq. ft, FLOOR 3: 413 sq. ft, FLOOR 4: 599 sq. ft
EXCLUDED AREAS: ELECTRICAL ROOM: 65 sq. ft, GARAGE: 379 sq. ft, DECK: 514 sq. ft,
FIREPLACE: 8 sq. ft, PORCH: 187 sq. ft

MEASUREMENTS CALCULATED BY V1Photos.COM ARE DEEMED HIGHLY RELIABLE BUT NOT GUARANTEED.



Disclaimer: Sizes and Dimensions are Approximate, Actual May Vary.



Jordan Kermes

952-956-2958

jkermes@wedgewoodhomesrealty.com

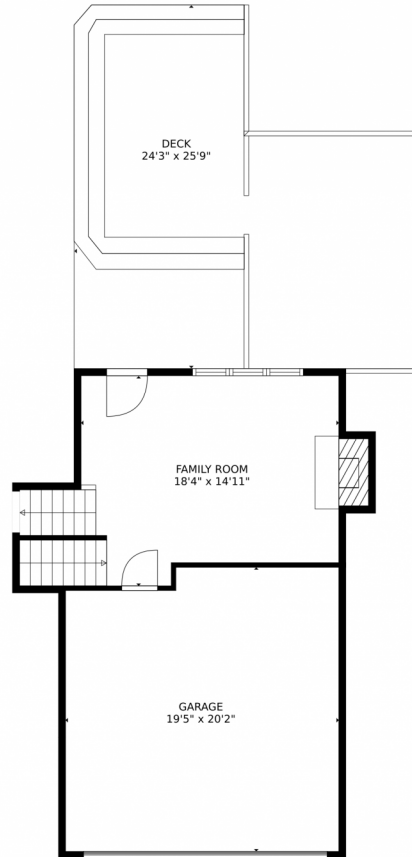
<https://colorado.wedgewoodhomesrealty.com>



Scan code
for more
property
details



1352 Coolcrest Drive, Colorado Springs, CO 80906 — Lower Level



TOTAL: 1628 sq. ft

Below Ground: 330 sq. ft, FLOOR 2: 286 sq. ft, FLOOR 3: 413 sq. ft, FLOOR 4: 599 sq. ft
EXCLUDED AREAS: ELECTRICAL ROOM: 65 sq. ft, GARAGE: 379 sq. ft, DECK: 514 sq. ft,
FIREPLACE: 8 sq. ft, PORCH: 187 sq. ft

MEASUREMENTS CALCULATED BY V1Photos.COM ARE DEEMED HIGHLY RELIABLE BUT NOT GUARANTEED.



Disclaimer: Sizes and Dimensions are Approximate, Actual May Vary.



Jordan Kermes

952-956-2958

jkermes@wedgewoodhomesrealty.com

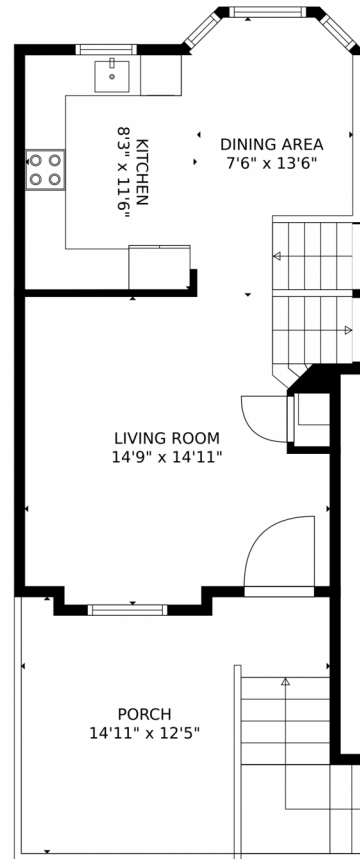
<https://colorado.wedgewoodhomesrealty.com>



Scan code
for more
property
details



1352 Coolcrest Drive, Colorado Springs, CO 80906 – Main Level



TOTAL: 1628 sq. ft

Below Ground: 330 sq. ft, FLOOR 2: 286 sq. ft, FLOOR 3: 413 sq. ft, FLOOR 4: 599 sq. ft
EXCLUDED AREAS: ELECTRICAL ROOM: 65 sq. ft, GARAGE: 379 sq. ft, DECK: 514 sq. ft,
FIREPLACE: 8 sq. ft, PORCH: 187 sq. ft

MEASUREMENTS CALCULATED BY V1Photos.COM ARE DEEMED HIGHLY RELIABLE BUT NOT GUARANTEED.



Disclaimer: Sizes and Dimensions are Approximate, Actual May Vary.



Jordan Kermes

952-956-2958

jkermes@wedgewoodhomesrealty.com

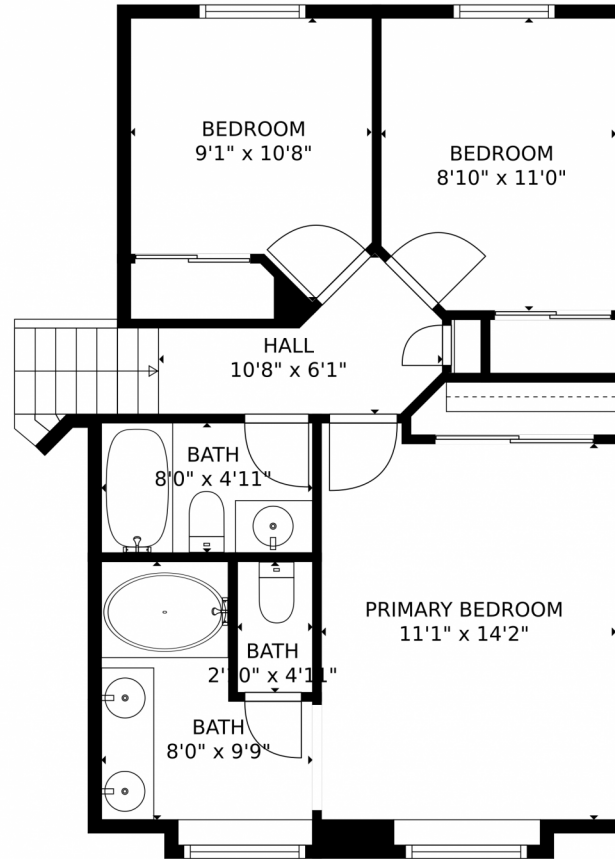
<https://colorado.wedgewoodhomesrealty.com>



Scan code
for more
property
details



1352 Coolcrest Drive, Colorado Springs, CO 80906 — Upper Level



TOTAL: 1628 sq. ft

Below Ground: 330 sq. ft, FLOOR 2: 286 sq. ft, FLOOR 3: 413 sq. ft, FLOOR 4: 599 sq. ft
EXCLUDED AREAS: ELECTRICAL ROOM: 65 sq. ft, GARAGE: 379 sq. ft, DECK: 514 sq. ft,
FIREPLACE: 8 sq. ft, PORCH: 187 sq. ft

MEASUREMENTS CALCULATED BY V1Photos.COM ARE DEEMED HIGHLY RELIABLE BUT NOT GUARANTEED.



Disclaimer: Sizes and Dimensions are Approximate, Actual May Vary.



Jordan Kermes

952-956-2958

jkermes@wedgewoodhomesrealty.com

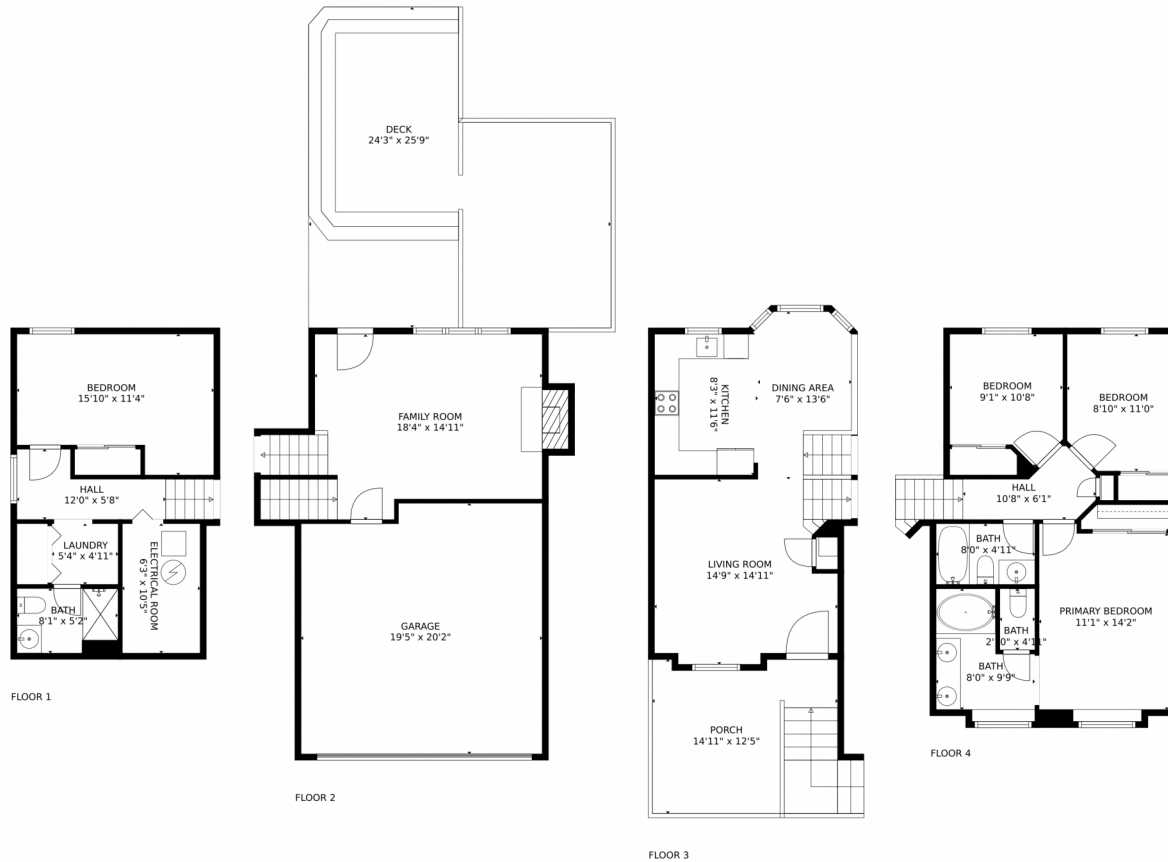
<https://colorado.wedgewoodhomesrealty.com>



Scan code
for more
property
details



1352 Coolcrest Drive, Colorado Springs, CO 80906 – All Levels



TOTAL: 1628 sq. ft

Below Ground: 330 sq. ft, FLOOR 2: 286 sq. ft, FLOOR 3: 413 sq. ft, FLOOR 4: 599 sq. ft

EXCLUDED AREAS: ELECTRICAL ROOM: 65 sq. ft, GARAGE: 379 sq. ft, DECK: 514 sq. ft,

FIREPLACE: 8 sq. ft, PORCH: 187 sq. ft

MEASUREMENTS CALCULATED BY V1Photos.COM ARE DEEMED HIGHLY RELIABLE BUT NOT GUARANTEED.



Disclaimer: Sizes and Dimensions are Approximate, Actual May Vary.



Jordan Kermes

952-956-2958

jkermes@wedgewoodhomesrealty.com

<https://colorado.wedgewoodhomesrealty.com>



Scan code
for more
property
details

