

Single Family

2146 SQFT

4 Beds

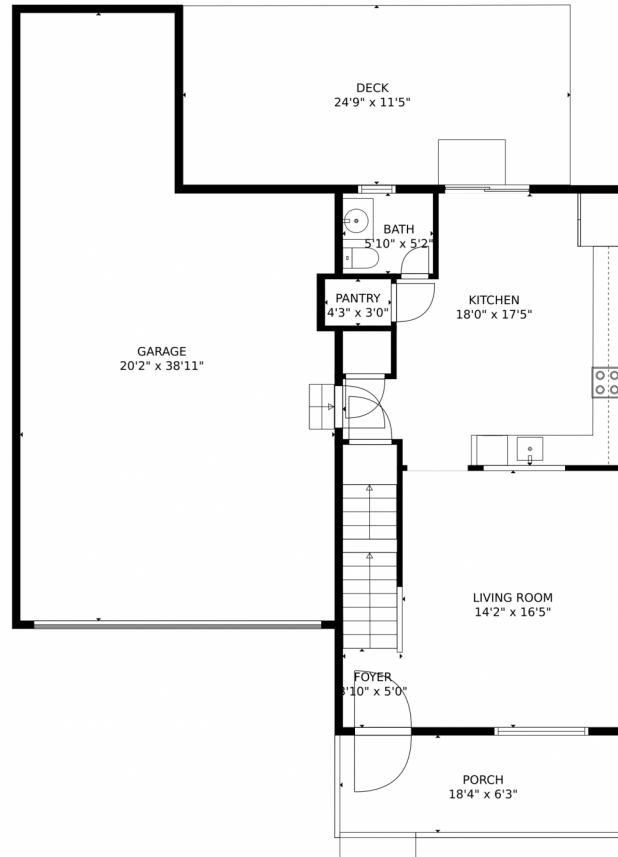
3/1 Baths



**Taylor Haas**  
 303-665-7368  
 taylorh@coloradorpm.com  
<https://www.coloradorpm.com/available-rental-properties-denver>



# 1850 Walton Drive, Colorado Springs, CO 80951 – Main Level



**TOTAL: 1949 sq. ft**

Below Ground: 473 sq. ft, FLOOR 2: 619 sq. ft, FLOOR 3: 857 sq. ft  
EXCLUDED AREAS: ELECTRICAL ROOM: 92 sq. ft, UNDEFINED: 7 sq. ft, GARAGE: 662 sq. ft,  
DECK: 285 sq. ft, PORCH: 125 sq. ft

MEASUREMENTS CALCULATED BY V1Photos.com ARE DEEMED HIGHLY RELIABLE BUT NOT GUARANTEED.



Disclaimer: Sizes and Dimensions are Approximate, Actual May Vary.



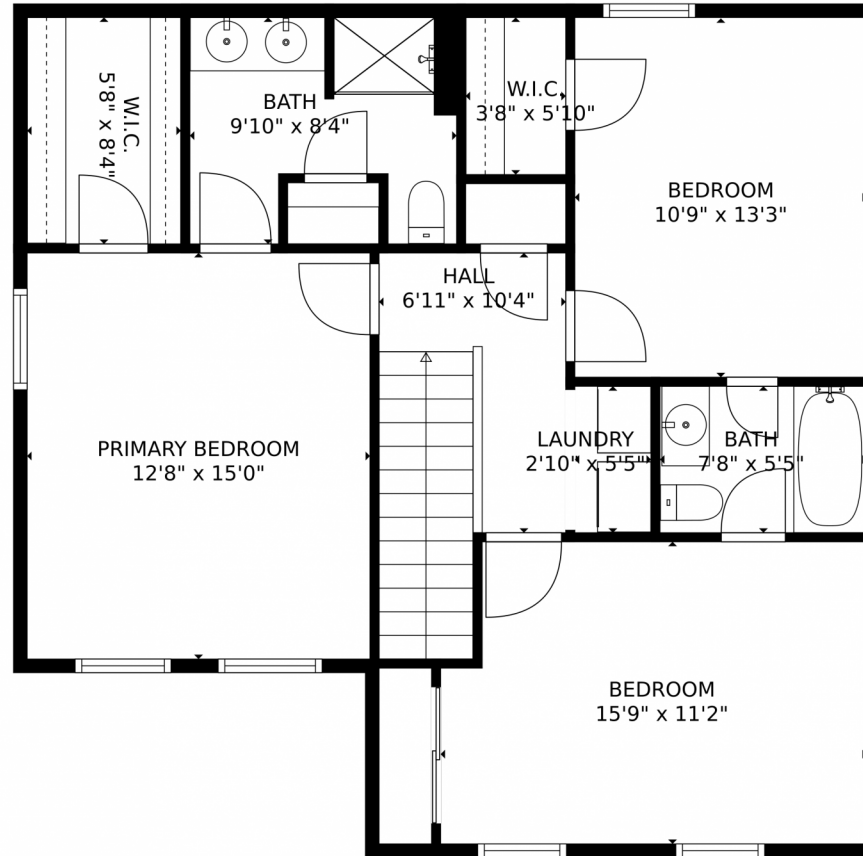
**Taylor Haas**  
303-665-7368  
taylorh@coloradorpm.com  
<https://www.coloradorpm.com/available-rental-properties-denver>



Scan code  
for more  
property  
details



1850 Walton Drive, Colorado Springs, CO 80951 – 2nd Level



**TOTAL: 1949 sq. ft**

Below Ground: 473 sq. ft, FLOOR 2: 619 sq. ft, FLOOR 3: 857 sq. ft  
EXCLUDED AREAS: ELECTRICAL ROOM: 92 sq. ft, UNDEFINED: 7 sq. ft, GARAGE: 662 sq. ft,  
DECK: 285 sq. ft, PORCH: 125 sq. ft

MEASUREMENTS CALCULATED BY V1Photos.COM ARE DEEMED HIGHLY RELIABLE BUT NOT GUARANTEED.



Disclaimer: Sizes and Dimensions are Approximate, Actual May Vary.



Taylor Haas

303-665-7368

taylorh@coloradorpm.com

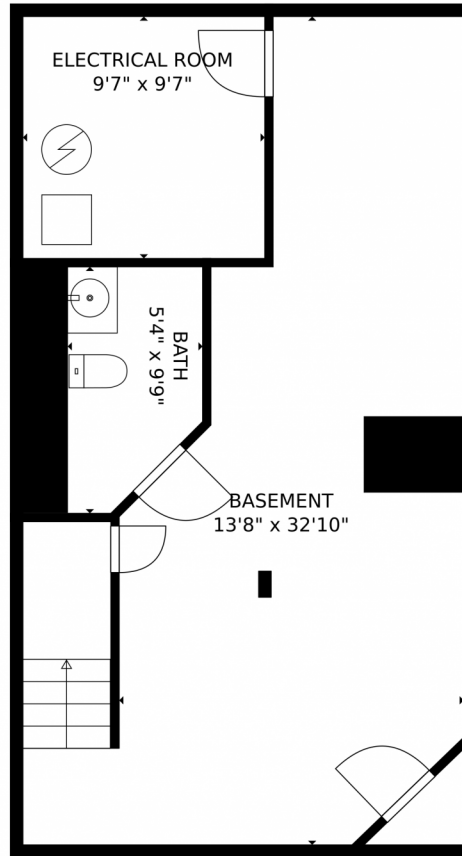
<https://www.coloradorpm.com/available-rental-properties-denver>



Scan code  
for more  
property  
details



1850 Walton Drive, Colorado Springs, CO 80951 – Lower Level



**TOTAL: 1949 sq. ft**

Below Ground: 473 sq. ft, FLOOR 2: 619 sq. ft, FLOOR 3: 857 sq. ft  
EXCLUDED AREAS: ELECTRICAL ROOM: 92 sq. ft, UNDEFINED: 7 sq. ft, GARAGE: 662 sq. ft,  
DECK: 285 sq. ft, PORCH: 125 sq. ft

MEASUREMENTS CALCULATED BY V1Photos.com ARE DEEMED HIGHLY RELIABLE BUT NOT GUARANTEED.

Disclaimer: Sizes and Dimensions are Approximate, Actual May Vary.

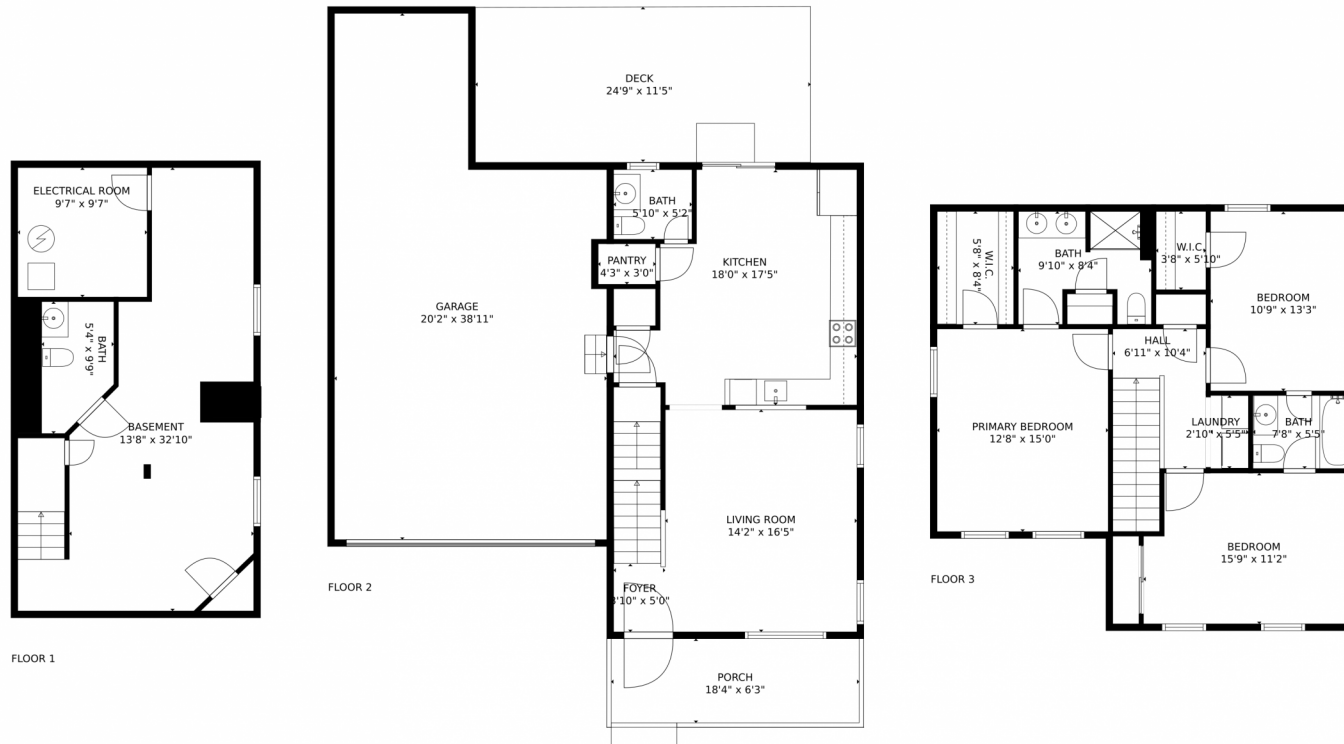


**Taylor Haas**  
303-665-7368  
taylorh@coloradorpm.com  
<https://www.coloradorpm.com/available-rental-properties-denver>





# 1850 Walton Drive, Colorado Springs, CO 80951 – All Levels



**TOTAL: 1949 sq. ft**

Below Ground: 473 sq. ft, FLOOR 2: 619 sq. ft, FLOOR 3: 857 sq. ft

EXCLUDED AREAS: ELECTRICAL ROOM: 92 sq. ft, UNDEFINED: 7 sq. ft, GARAGE: 662 sq. ft,  
DECK: 285 sq. ft, PORCH: 125 sq. ft

MEASUREMENTS CALCULATED BY V1Photos.COM ARE DEEMED HIGHLY RELIABLE BUT NOT GUARANTEED.



Disclaimer: Sizes and Dimensions are Approximate, Actual May Vary.



**Taylor Haas**

303-665-7368

taylorh@coloradorpm.com

<https://www.coloradorpm.com/available-rental-properties-denver>



Scan code  
for more  
property  
details

