



Single Family



1296 SQFT



3 Beds



2 Baths



2 Car



0.18 Acre

## PROPERTY DETAILS

Welcome to your dream home in the perfect location! This charming ranch is situated in a neighborhood you'll love, with open space and a picturesque pond as your backyard. Wake up to serene nature views every morning. With 3 bedrooms and 2 baths, this home has all the space you need. The living room is cozy and perfect for relaxation or entertaining. The kitchen is bright and open, with ample storage and a large pantry. The primary bedroom has a walk-in closet for organization. The crawl space provides extra storage. The landscaping is lush and beautiful. Don't miss out on this amazing opportunity. Call now to schedule a viewing and make this house your home. Your dream home is waiting for you!



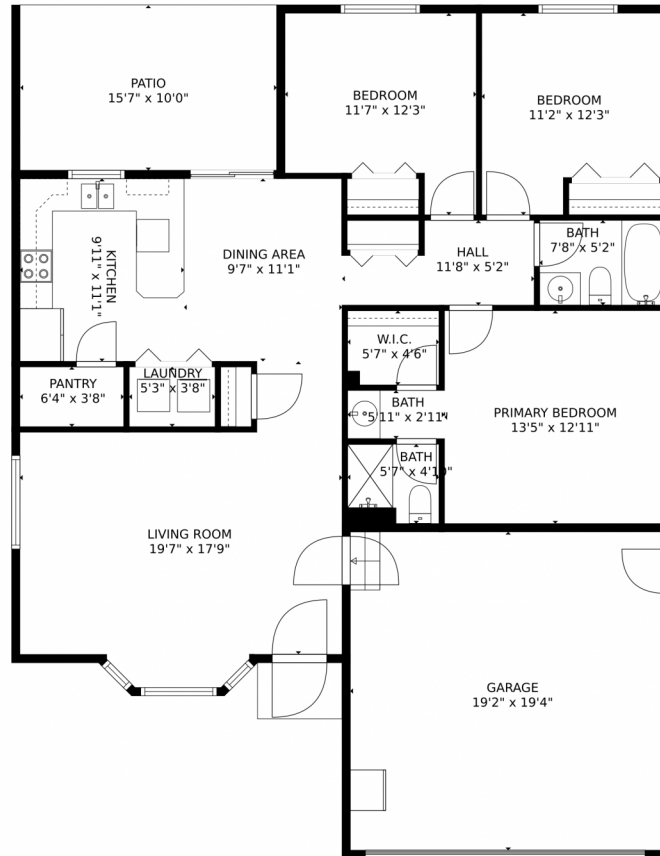
**Alexis Foster**  
970-310-6999  
alexisfoster@windermere.com



Scan code  
for more  
property  
details



# 1450 Cattail Drive, Loveland, CO 80537 – Floor Plan



**TOTAL: 1222 sq. ft**  
FLOOR 1: 1222 sq. ft  
EXCLUDED AREAS: GARAGE: 370 sq. ft, PATIO: 156 sq. ft  
MEASUREMENTS CALCULATED BY V1Photos.COM ARE DEEMED HIGHLY RELIABLE BUT NOT GUARANTEED.



Disclaimer: Sizes and Dimensions are Approximate, Actual May Vary.



Alexis Foster  
970-310-6999  
alexisfoster@windermere.com

