



Single Family



3952 SQFT



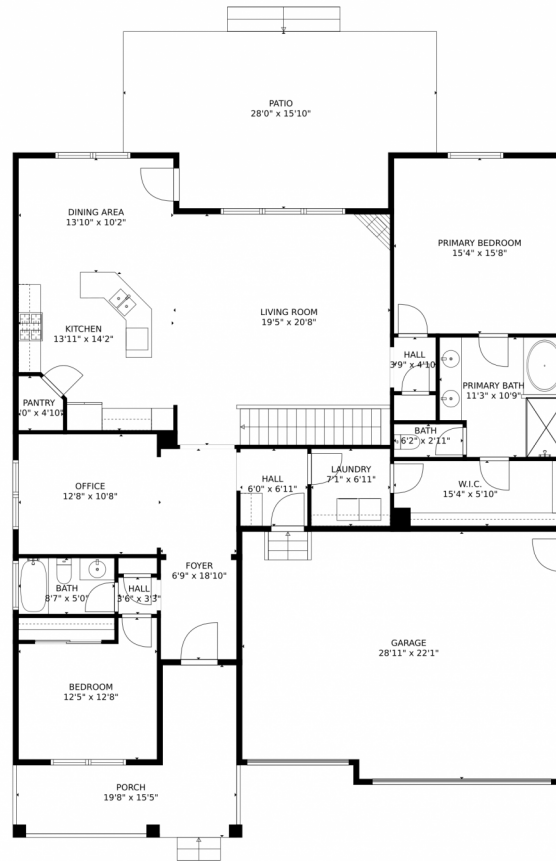
**Suzanne Ekeler**  
970-590-4841  
suzanne.ekeler@windermere.com



Scan code  
for more  
property  
details



# 1883 Vista Plaza Street, Severance, CO 80550 – Main Level



**TOTAL: 3442 sq. ft**

Below Ground: 1586 sq. ft, FLOOR 2: 1856 sq. ft

EXCLUDED AREAS: ELECTRICAL ROOM: 147 sq. ft, GARAGE: 622 sq. ft, PORCH: 182 sq. ft,  
PATIO: 397 sq. ft

MEASUREMENTS CALCULATED BY V1Photos.COM ARE DEEMED HIGHLY RELIABLE BUT NOT GUARANTEED.



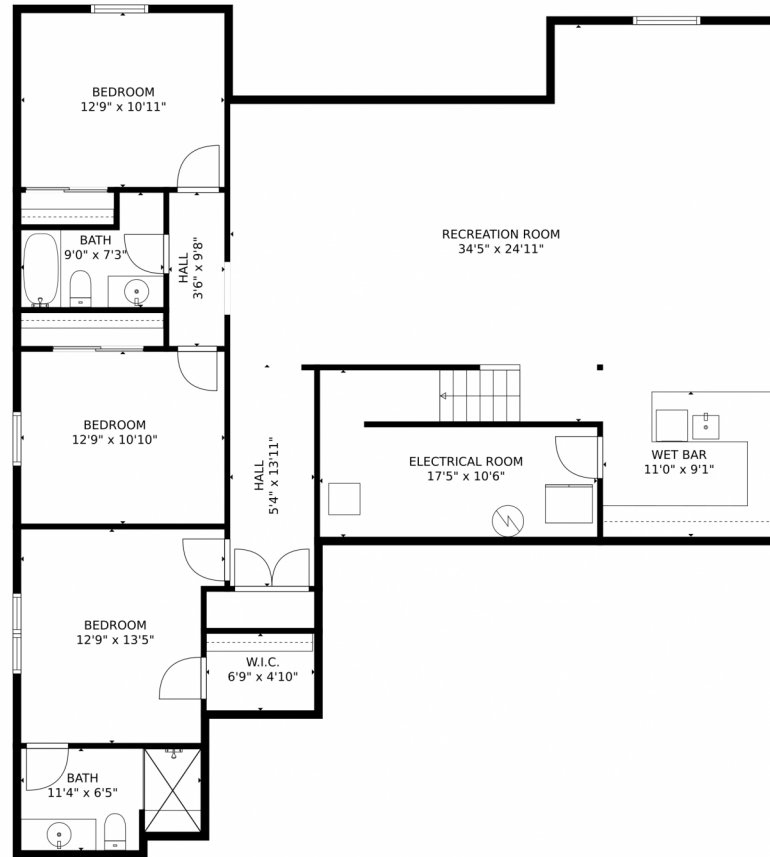
Disclaimer: Sizes and Dimensions are Approximate, Actual May Vary.



Suzanne Ekeler  
970-590-4841  
suzanne.ekeler@windermere.com



# 1883 Vista Plaza Street, Severance, CO 80550 – Lower Level



**TOTAL: 3442 sq. ft**

Below Ground: 1586 sq. ft, FLOOR 2: 1856 sq. ft

EXCLUDED AREAS: ELECTRICAL ROOM: 147 sq. ft, GARAGE: 622 sq. ft, PORCH: 182 sq. ft,  
PATIO: 397 sq. ft

MEASUREMENTS CALCULATED BY V1Photos.com ARE DEEMED HIGHLY RELIABLE BUT NOT GUARANTEED.



Disclaimer: Sizes and Dimensions are Approximate, Actual May Vary.



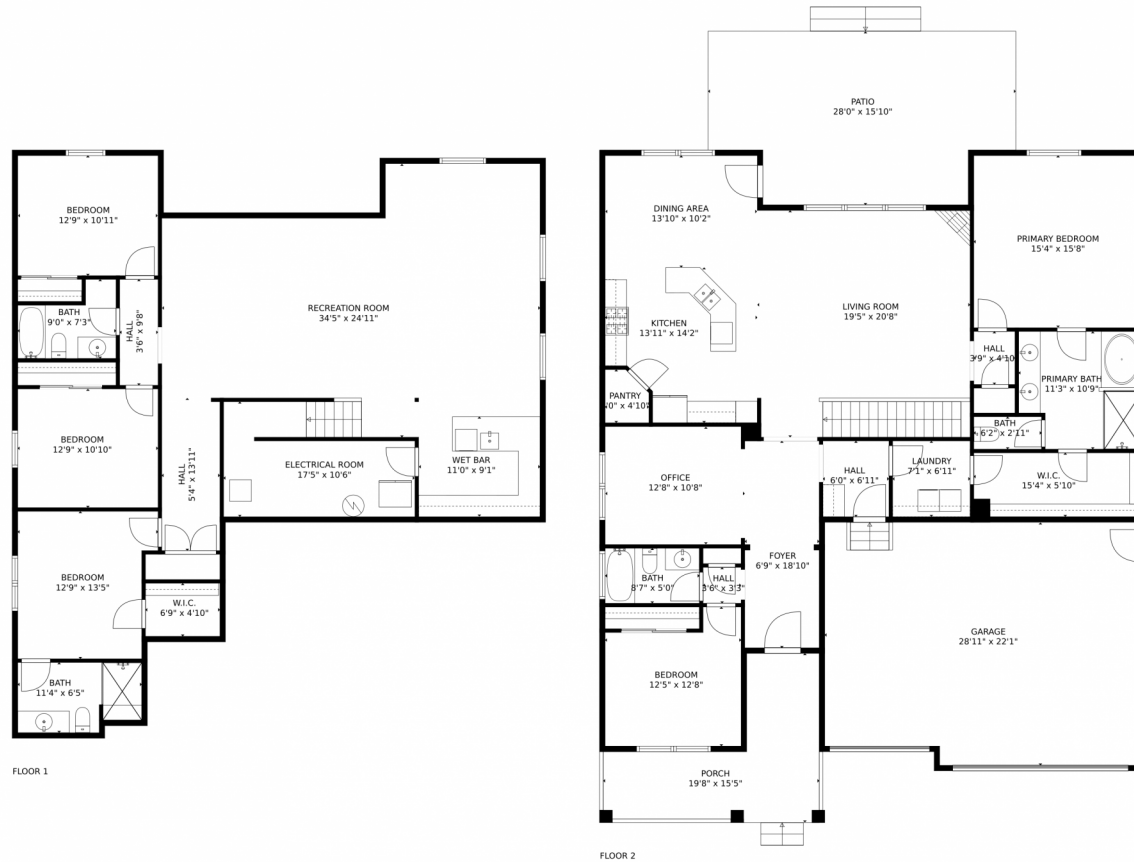
Suzanne Ekeler  
970-590-4841  
suzanne.ekeler@windermere.com



Scan code  
for more  
property  
details



# 1883 Vista Plaza Street, Severance, CO 80550 – All Levels



FLOOR 1

FLOOR 2

**TOTAL: 3442 sq. ft**

Below Ground: 1586 sq. ft, FLOOR 2: 1856 sq. ft

EXCLUDED AREAS: ELECTRICAL ROOM: 147 sq. ft, GARAGE: 622 sq. ft, PORCH: 182 sq. ft,  
PATIO: 397 sq. ft

MEASUREMENTS CALCULATED BY V1Photos.COM ARE DEEMED HIGHLY RELIABLE BUT NOT GUARANTEED.



Disclaimer: Sizes and Dimensions are Approximate, Actual May Vary.



Suzanne Ekeler  
970-590-4841  
suzanne.ekeler@windermere.com

