



 Single Family

 1926 SQFT

 3 Beds

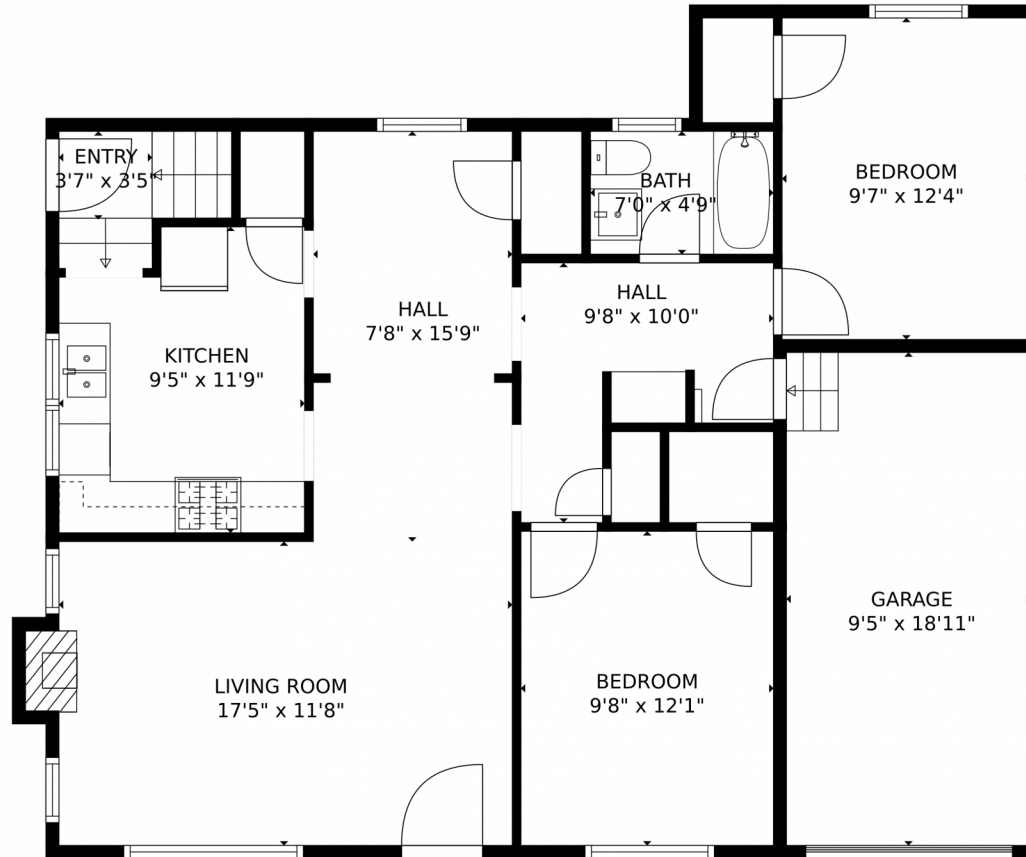
 1 Baths



Taylor Haas
303-665-7368
taylorh@coloradorpm.com
<https://www.coloradorpm.com/available-rental-properties-denv>



791 Jasmine Street, Denver, CO 80220 – Main Level



TOTAL: 1545 sq. ft
Below Ground: 656 sq. ft, FLOOR 2: 889 sq. ft
EXCLUDED AREAS: UTILITY: 85 sq. ft, FIREPLACE: 4 sq. ft, GARAGE: 178 sq. ft
MEASUREMENTS CALCULATED BY V1PHOTOS.COM ARE DEEMED HIGHLY RELIABLE BUT NOT GUARANTEED.



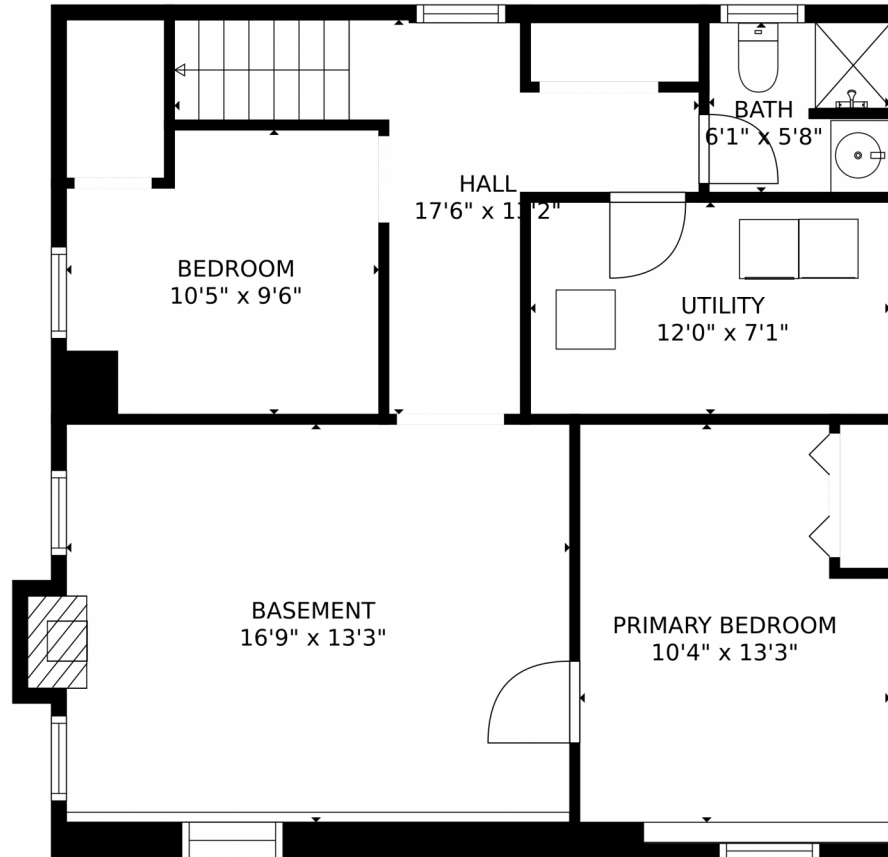
Disclaimer: Sizes and Dimensions are Approximate, Actual May Vary.



Taylor Haas
303-665-7368
taylorh@coloradorpm.com
<https://www.coloradorpm.com/available-rental-properties-denver>



791 Jasmine Street, Denver, CO 80220 – Lower Level



TOTAL: 1545 sq. ft

Below Ground: 656 sq. ft, FLOOR 2: 889 sq. ft

EXCLUDED AREAS: UTILITY: 85 sq. ft, FIREPLACE: 4 sq. ft, GARAGE: 178 sq. ft

MEASUREMENTS CALCULATED BY V1Photos.com ARE DEEMED HIGHLY RELIABLE BUT NOT GUARANTEED.



Disclaimer: Sizes and Dimensions are Approximate, Actual May Vary.



Taylor Haas

303-665-7368

taylorh@coloradorpm.com

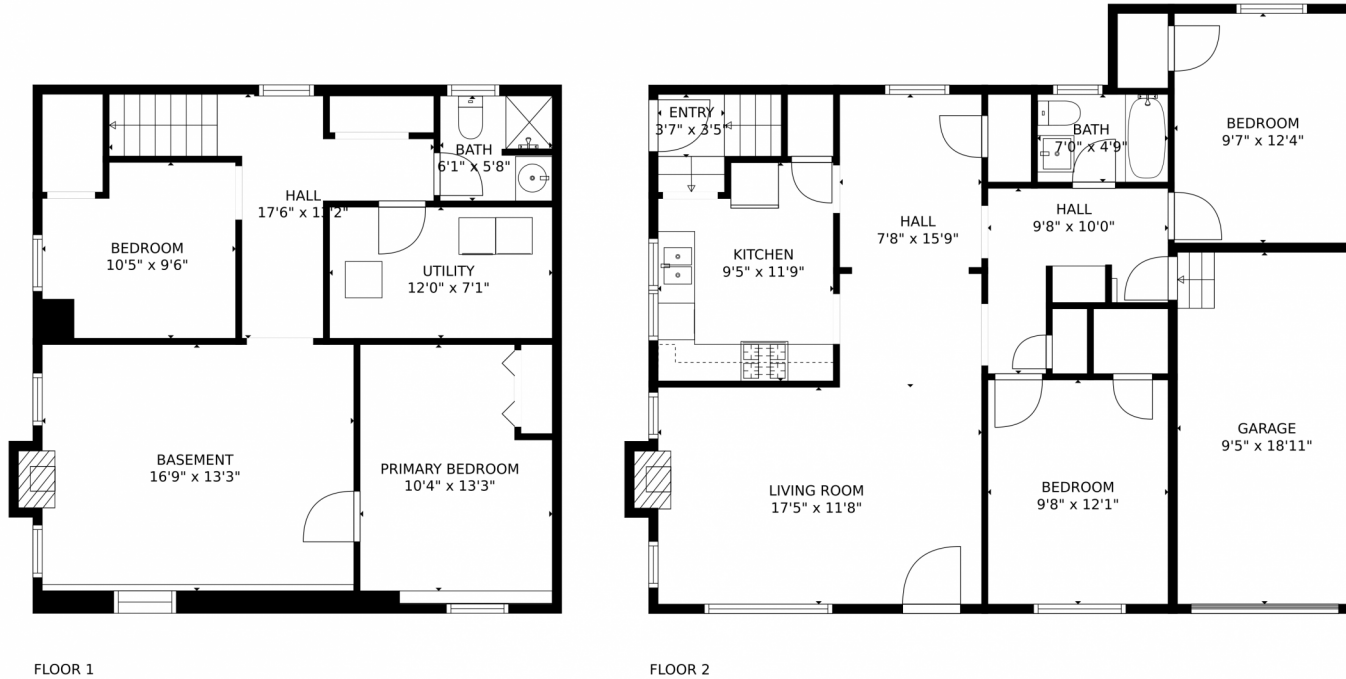
<https://www.coloradorpm.com/available-rental-properties-denv>



Scan code
for more
property
details



791 Jasmine Street, Denver, CO 80220 – All Levels



TOTAL: 1545 sq. ft

Below Ground: 656 sq. ft, FLOOR 2: 889 sq. ft

EXCLUDED AREAS: UTILITY: 85 sq. ft, FIREPLACE: 4 sq. ft, GARAGE: 178 sq. ft

MEASUREMENTS CALCULATED BY V1PHOTOS.COM ARE DEEMED HIGHLY RELIABLE BUT NOT GUARANTEED.



Disclaimer: Sizes and Dimensions are Approximate, Actual May Vary.



Taylor Haas

303-665-7368

taylorh@coloradorpm.com

<https://www.coloradorpm.com/available-rental-properties-denver>



Scan code
for more
property
details

