




 Single Family

 1032 SQFT

 3 Beds

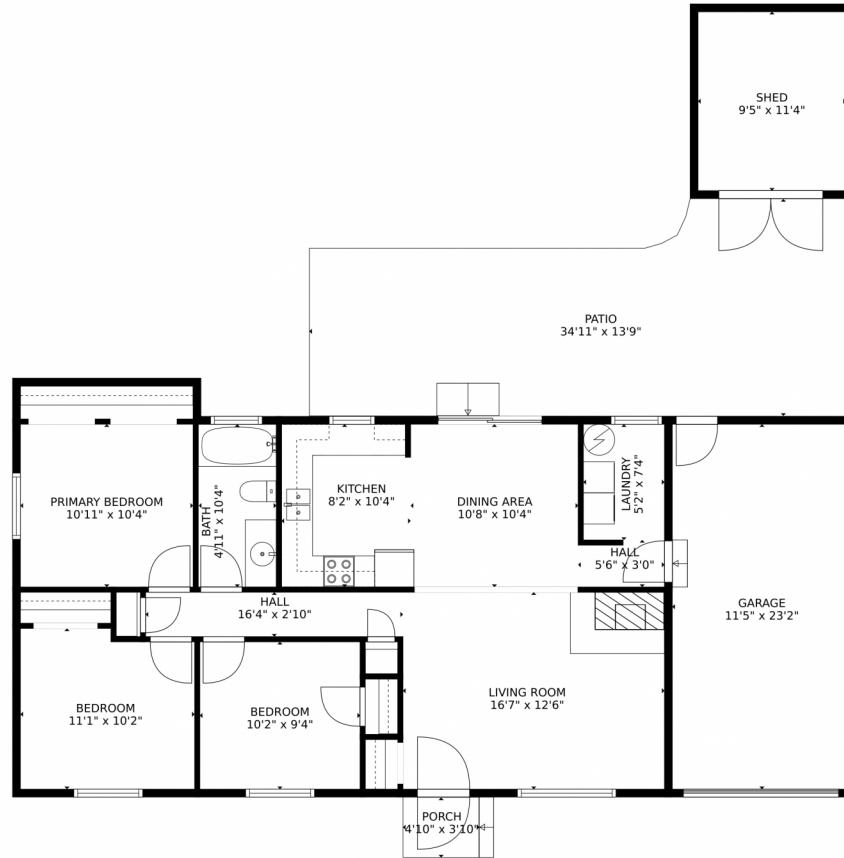
 1 Baths



Taylor Haas
303-665-7368
taylorh@coloradorpm.com
<https://www.coloradorpm.com/available-rental-properties-denver>



1045 7th Street Place, Berthoud, CO 80513 – Floor Plan



GROSS INTERNAL AREA
FLOOR 1: 973 sq. ft.
EXCLUDED AREAS: GARAGE: 263 sq. ft., SHED: 107 sq. ft., PORCH: 19 sq. ft.
PATIO: 408 sq. ft.
TOTAL: 973 sq. ft.
MEASUREMENTS CALCULATED BY V1Photos.COM ARE DEEMED HIGHLY RELIABLE BUT NOT GUARANTEED.



Disclaimer: Sizes and Dimensions are Approximate, Actual May Vary.



Taylor Haas
303-665-7368
taylorh@coloradorpm.com
<https://www.coloradorpm.com/available-rental-properties-denver>



Scan code
for more
property
details

