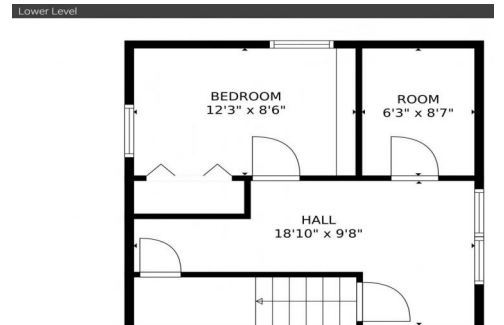




1604 Garwood Drive
Pueblo, CO 81005



Single Family

2000 SQFT

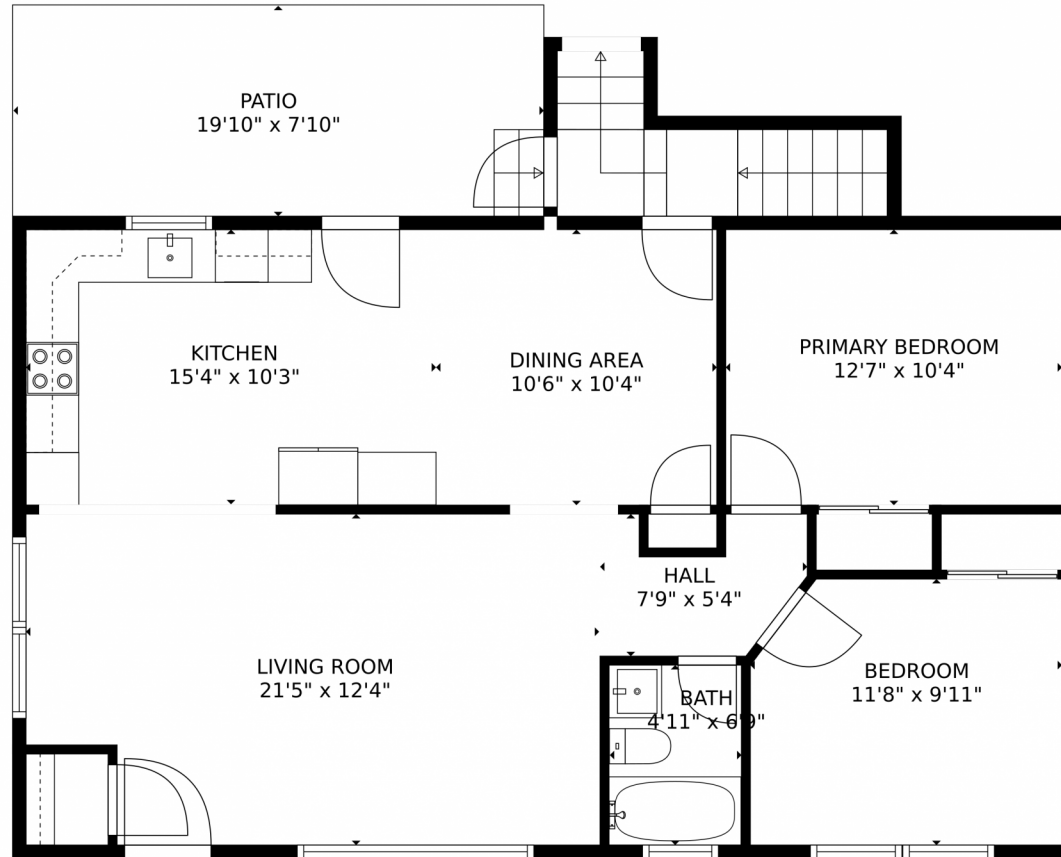
4 Beds

2 Baths

Ron Chmiel
719-582-3478
vision1@vision1properties.com



1604 Garwood Drive, Pueblo, CO 81005 – Main Level



TOTAL: 1660 sq. ft
Below Ground: 351 sq. ft, FLOOR 2: 946 sq. ft, FLOOR 3: 363 sq. ft
EXCLUDED AREAS: PATIO: 157 sq. ft
MEASUREMENTS CALCULATED BY V1Photos.com ARE DEEMED HIGHLY RELIABLE BUT NOT GUARANTEED.

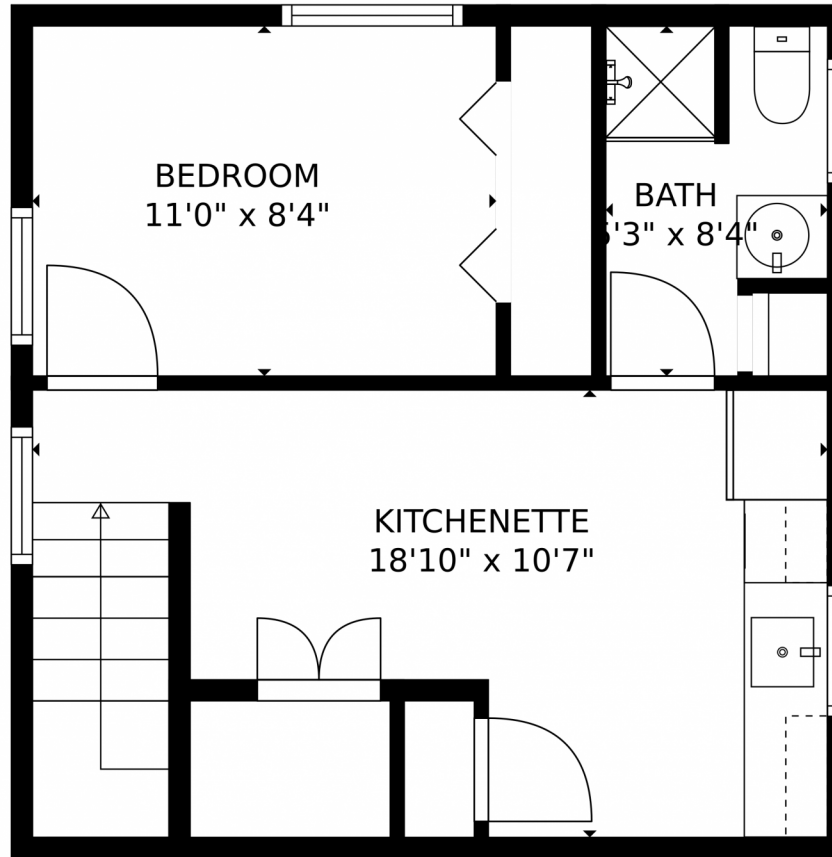


Disclaimer: Sizes and Dimensions are Approximate, Actual May Vary.

Ron Chmiel
719-582-3478
vision1@vision1properties.com



1604 Garwood Drive, Pueblo, CO 81005 – Upper Level



TOTAL: 1660 sq. ft
Below Ground: 351 sq. ft, FLOOR 2: 946 sq. ft, FLOOR 3: 363 sq. ft
EXCLUDED AREAS: PATIO: 157 sq. ft
MEASUREMENTS CALCULATED BY V1Photos.com ARE DEEMED HIGHLY RELIABLE BUT NOT GUARANTEED.

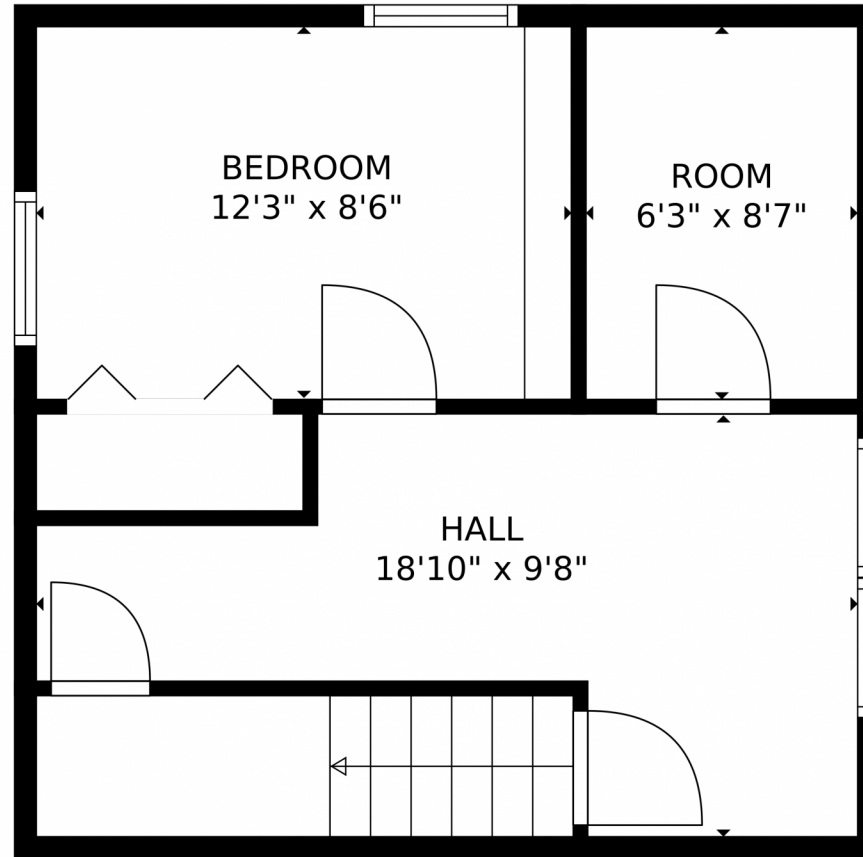


Disclaimer: Sizes and Dimensions are Approximate, Actual May Vary.

Ron Chmiel
719-582-3478
vision1@vision1properties.com



1604 Garwood Drive, Pueblo, CO 81005 – Lower Level



TOTAL: 1660 sq. ft
Below Ground: 351 sq. ft, FLOOR 2: 946 sq. ft, FLOOR 3: 363 sq. ft
EXCLUDED AREAS: PATIO: 157 sq. ft
MEASUREMENTS CALCULATED BY V1Photos.com ARE DEEMED HIGHLY RELIABLE BUT NOT GUARANTEED.



Disclaimer: Sizes and Dimensions are Approximate, Actual May Vary.

Ron Chmiel
719-582-3478
vision1@vision1properties.com



1604 Garwood Drive, Pueblo, CO 81005 – All Levels



TOTAL: 1660 sq. ft

Below Ground: 351 sq. ft, FLOOR 2: 946 sq. ft, FLOOR 3: 363 sq. ft

EXCLUDED AREAS: PATIO: 157 sq. ft

MEASUREMENTS CALCULATED BY V1Photos.com ARE DEEMED HIGHLY RELIABLE BUT NOT GUARANTEED.

Disclaimer: Sizes and Dimensions are Approximate, Actual May Vary.

Ron Chmiel
719-582-3478
vision1@vision1properties.com

