




 Single Family

 1300 SQFT

 3 Beds

 2 Baths

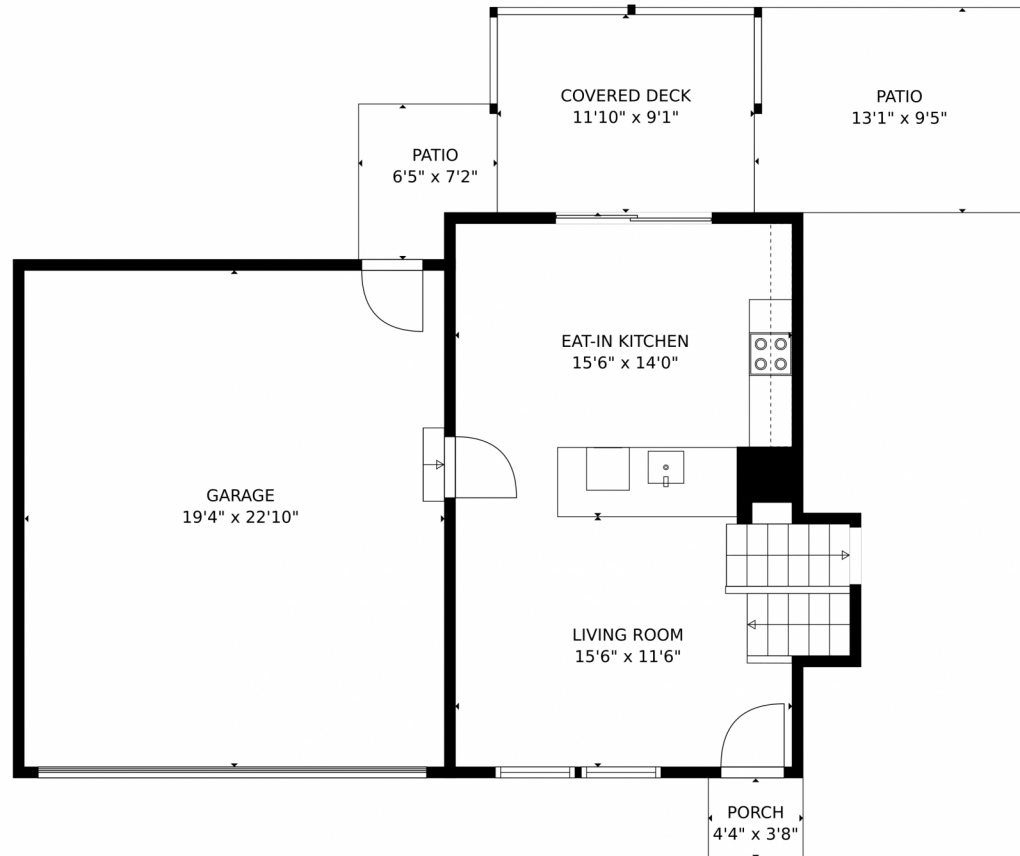
 2 Car



**Jordan Kermes**  
952-956-2958  
jkermes@wedgewoodhomesrealty.com  
<https://colorado.wedgewoodhomesrealty.com>



# 43 South Briarwood Place, Pueblo, CO 81005 – Main Level



**TOTAL: 1174 sq. ft**

Below Ground: 356 sq. ft, FLOOR 2: 404 sq. ft, FLOOR 3: 414 sq. ft

EXCLUDED AREAS: FIREPLACE: 9 sq. ft, GARAGE: 443 sq. ft, COVERED DECK: 108 sq. ft,

PATIO: 162 sq. ft, PORCH: 16 sq. ft

MEASUREMENTS CALCULATED BY V1Photos.com ARE DEEMED HIGHLY RELIABLE BUT NOT GUARANTEED.



Disclaimer: Sizes and Dimensions are Approximate, Actual May Vary.



**Jordan Kermes**

952-956-2958

[jkermes@wedgewoodhomesrealty.com](mailto:jkermes@wedgewoodhomesrealty.com)

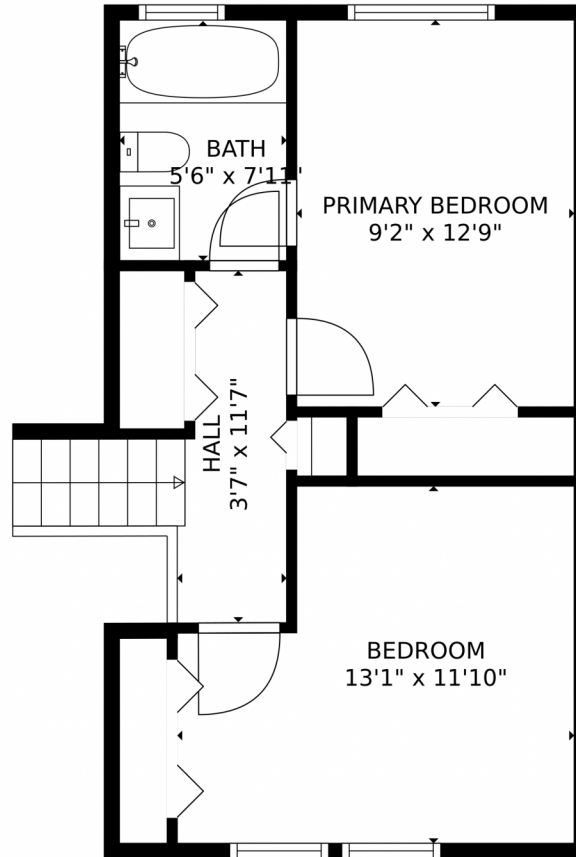
<https://colorado.wedgewoodhomesrealty.com>



Scan code  
for more  
property  
details



43 South Briarwood Place, Pueblo, CO 81005 – 2nd Level



**TOTAL: 1174 sq. ft**

Below Ground: 356 sq. ft, FLOOR 2: 404 sq. ft, FLOOR 3: 414 sq. ft

EXCLUDED AREAS: FIREPLACE: 9 sq. ft, GARAGE: 443 sq. ft, COVERED DECK: 108 sq. ft,

PATIO: 162 sq. ft, PORCH: 16 sq. ft

MEASUREMENTS CALCULATED BY V1Photos.COM ARE DEEMED HIGHLY RELIABLE BUT NOT GUARANTEED.



Disclaimer: Sizes and Dimensions are Approximate, Actual May Vary.



**Jordan Kermes**

952-956-2958

[jkermes@wedgewoodhomesrealty.com](mailto:jkermes@wedgewoodhomesrealty.com)

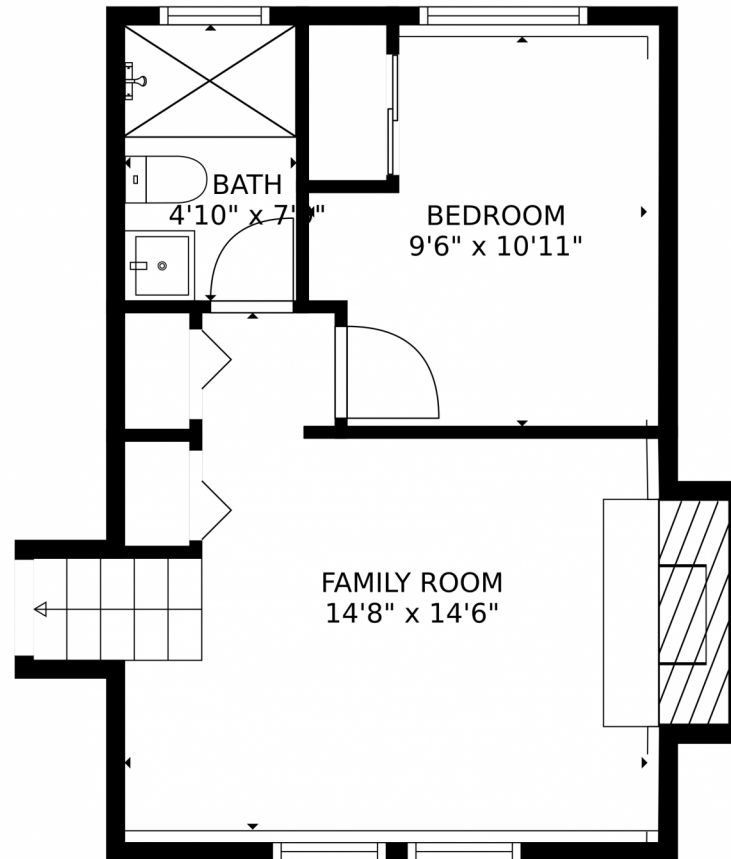
<https://colorado.wedgewoodhomesrealty.com>



Scan code  
for more  
property  
details



43 South Briarwood Place, Pueblo, CO 81005 – Lower Level



**TOTAL: 1174 sq. ft**

Below Ground: 356 sq. ft, FLOOR 2: 404 sq. ft, FLOOR 3: 414 sq. ft

EXCLUDED AREAS: FIREPLACE: 9 sq. ft, GARAGE: 443 sq. ft, COVERED DECK: 108 sq. ft,

PATIO: 162 sq. ft, PORCH: 16 sq. ft

MEASUREMENTS CALCULATED BY V1Photos.com ARE DEEMED HIGHLY RELIABLE BUT NOT GUARANTEED.



Disclaimer: Sizes and Dimensions are Approximate, Actual May Vary.



**Jordan Kermes**

952-956-2958

[jkermes@wedgewoodhomesrealty.com](mailto:jkermes@wedgewoodhomesrealty.com)

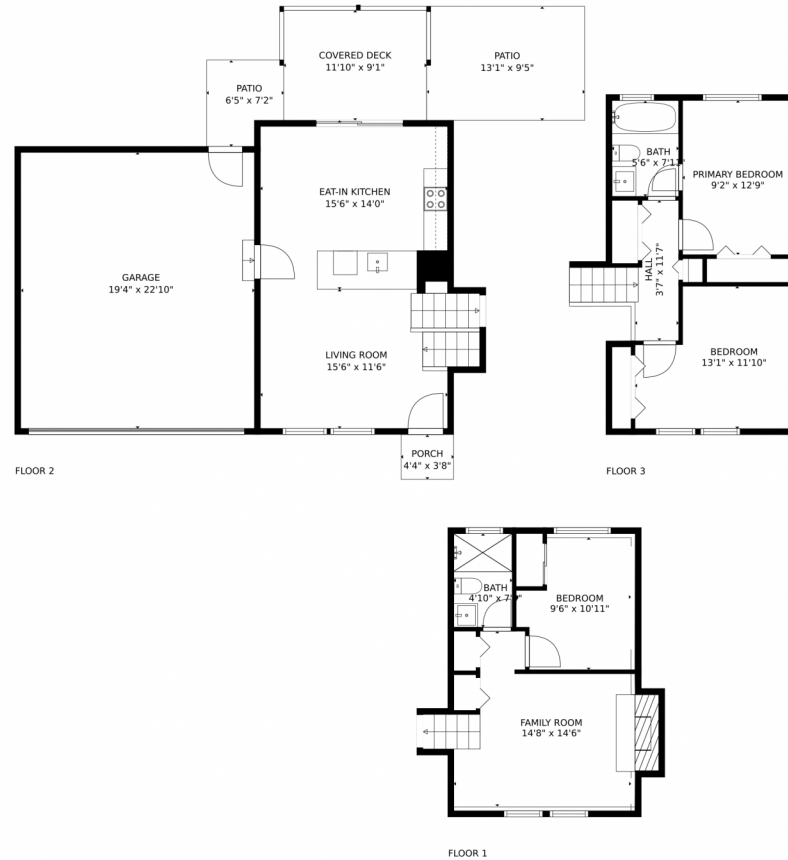
<https://colorado.wedgewoodhomesrealty.com>



Scan code  
for more  
property  
details



# 43 South Briarwood Place, Pueblo, CO 81005 – All Levels



**TOTAL: 1174 sq. ft**

Below Ground: 356 sq. ft, FLOOR 2: 404 sq. ft, FLOOR 3: 414 sq. ft  
EXCLUDED AREAS: FIREPLACE: 9 sq. ft, GARAGE: 443 sq. ft, COVERED DECK: 108 sq. ft,  
PATIO: 162 sq. ft, PORCH: 16 sq. ft

MEASUREMENTS CALCULATED BY V1Photos.com ARE DEEMED HIGHLY RELIABLE BUT NOT GUARANTEED.



Disclaimer: Sizes and Dimensions are Approximate, Actual May Vary.



**Jordan Kermes**

952-956-2958

[jkermes@wedgewoodhomesrealty.com](mailto:jkermes@wedgewoodhomesrealty.com)

<https://colorado.wedgewoodhomesrealty.com>



Scan code  
for more  
property  
details

