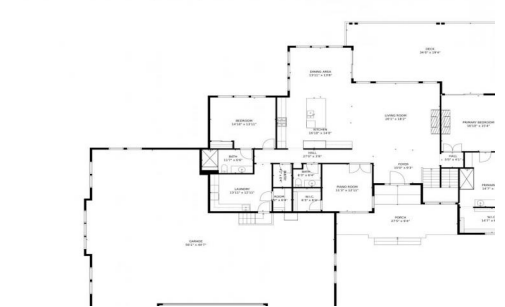




1953 Blossom Grove Drive, Windsor, CO 80550 - Main Level



 Single Family
  5260 SQFT
  6 Beds
  4/1 Baths
  5 Car
  1 Acre

PROPERTY DETAILS

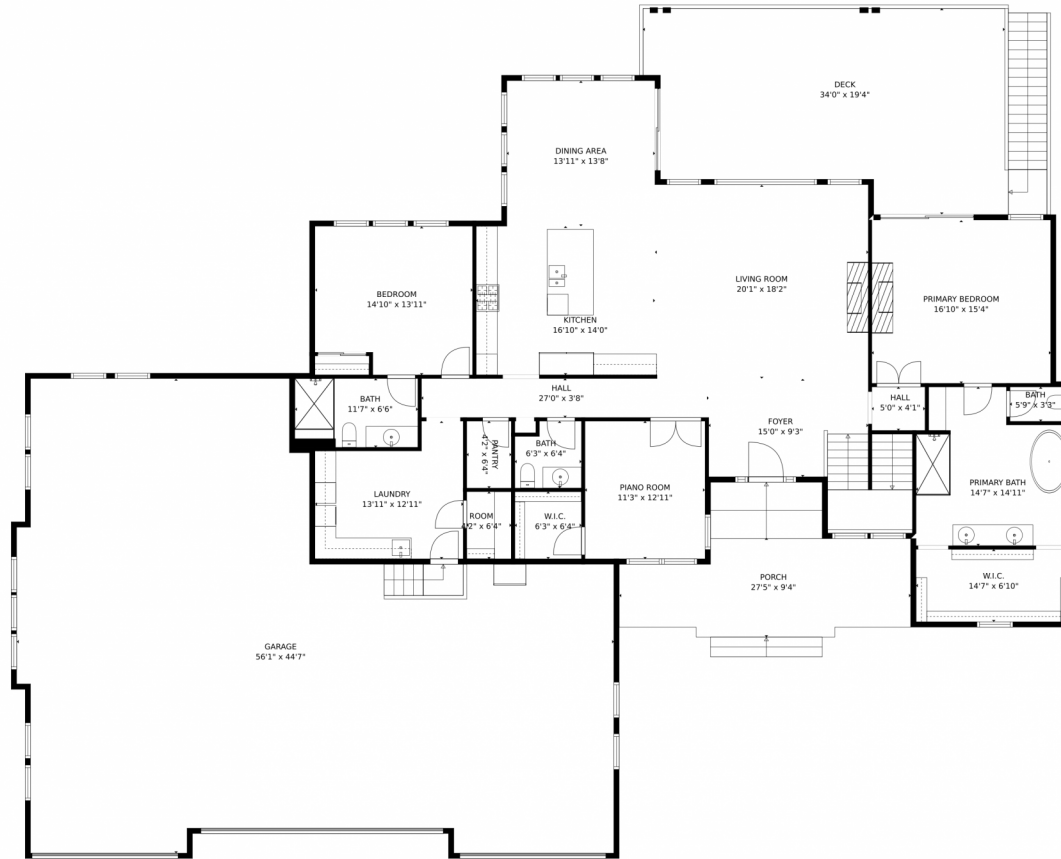
Experience opulence in this custom ranch estate in the prestigious Raindance community. With luxurious features and attention to detail, this home offers a seamless blend of nature and modern amenities. Enjoy a spacious layout, a walk-out basement, and sustainable design. The garage includes a dedicated RV bay. Stay fit in the in-home gym and entertain in the basement bar area. The kitchen boasts a deluxe Thermador appliance package. The outdoor space features a custom pergola with a fire pit and a pickleball court. The landscaping and design create a beautiful sanctuary. Residents have access to a community pool and lush gardens. Golf enthusiasts will appreciate the nearby golf course. Don't miss out on this opportunity for luxury living.



Jenny Hart
720-935-1137
hartrealty1@gmail.com



1953 Blossom Grove Drive, Windsor, CO 80550 – Main Level



TOTAL: 4675 sq. ft

Below Ground: 2211 sq. ft, FLOOR 2: 2464 sq. ft
EXCLUDED AREAS: STORAGE: 89 sq. ft, ELECTRICAL ROOM: 83 sq. ft, PORCH: 275 sq. ft,
DECK: 647 sq. ft, GARAGE: 1895 sq. ft

MEASUREMENTS CALCULATED BY V1Photos.com ARE DEEMED HIGHLY RELIABLE BUT NOT GUARANTEED.



Disclaimer: Sizes and Dimensions are Approximate, Actual May Vary.



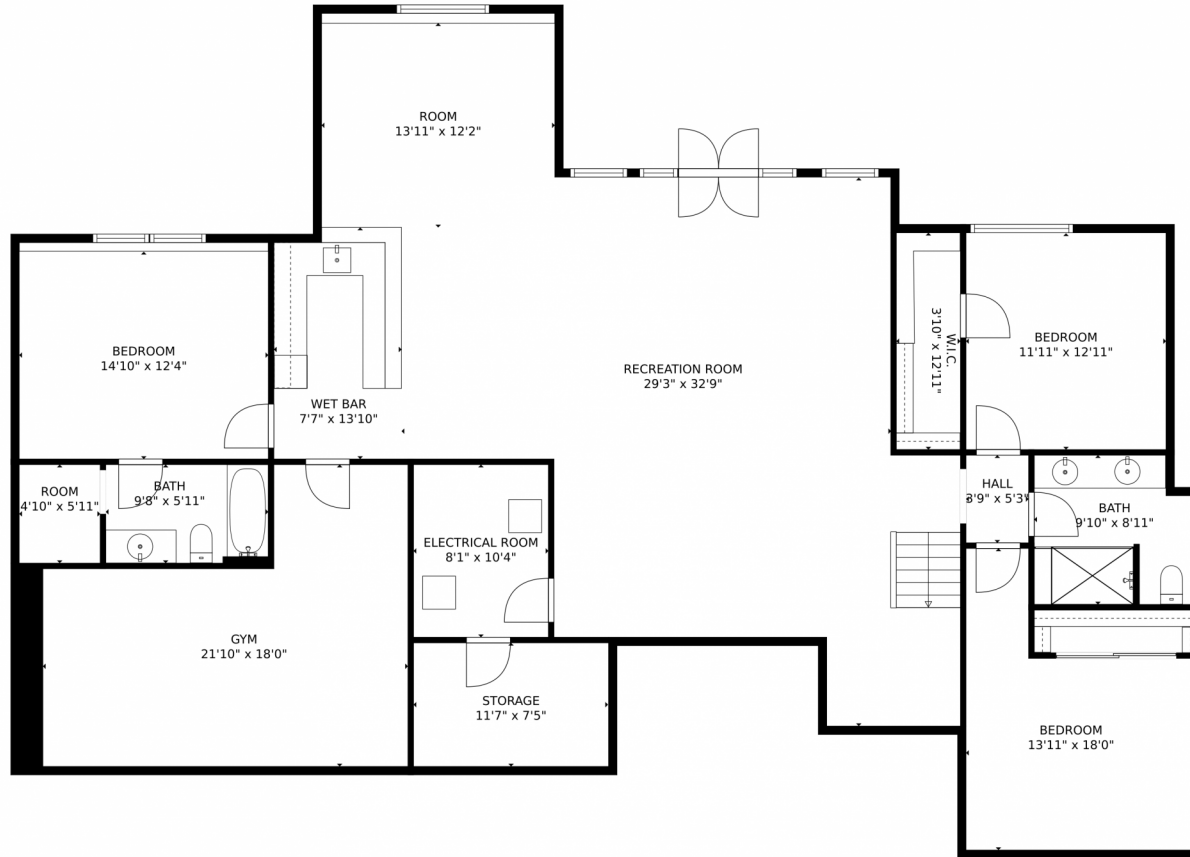
Jenny Hart
720-935-1137
hartrealty1@gmail.com



Scan code
for more
property
details



1953 Blossom Grove Drive, Windsor, CO 80550 – Lower Level



TOTAL: 4675 sq. ft
Below Ground: 2211 sq. ft, FLOOR 2: 2464 sq. ft
EXCLUDED AREAS: STORAGE: 89 sq. ft, ELECTRICAL ROOM: 83 sq. ft, PORCH: 275 sq. ft,
DECK: 647 sq. ft, GARAGE: 1895 sq. ft

MEASUREMENTS CALCULATED BY V1Photos.com ARE DEEMED HIGHLY RELIABLE BUT NOT GUARANTEED.



Disclaimer: Sizes and Dimensions are Approximate, Actual May Vary.



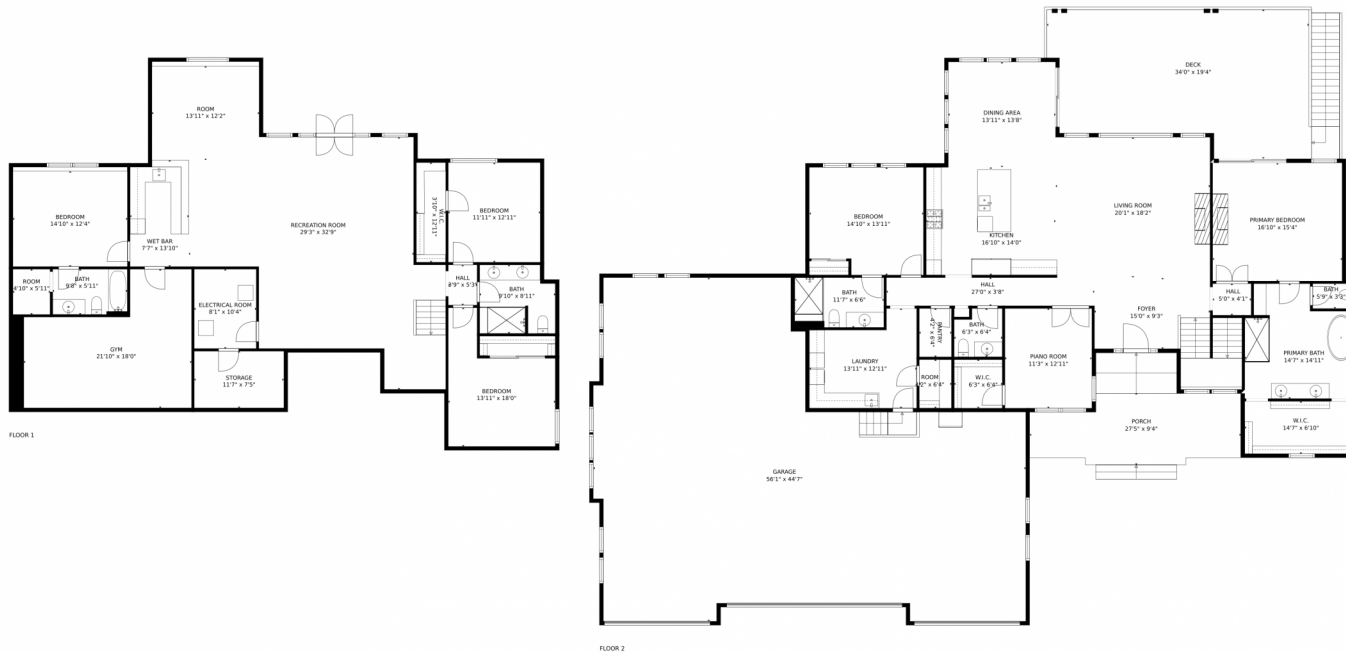
Jenny Hart
720-935-1137
hartrealty1@gmail.com



Scan code
for more
property
details



1953 Blossom Grove Drive, Windsor, CO 80550 – All Levels



TOTAL: 4675 sq. ft
Below Ground: 2211 sq. ft, FLOOR 2: 2464 sq. ft
EXCLUDED AREAS: STORAGE: 89 sq. ft, ELECTRICAL ROOM: 83 sq. ft, PORCH: 275 sq. ft,
DECK: 647 sq. ft, GARAGE: 1895 sq. ft

MEASUREMENTS CALCULATED BY V1Photos.com ARE DEEMED HIGHLY RELIABLE BUT NOT GUARANTEED.



Disclaimer: Sizes and Dimensions are Approximate, Actual May Vary.



Jenny Hart
720-935-1137
hartrealty1@gmail.com



Scan code
for more
property
details

