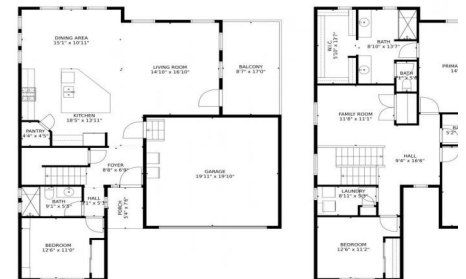




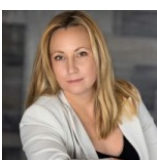
8433 Rush Creek Avenue, Littleton, CO 80124 - All Levels



Single Family
 2367 SQFT
 4 Beds
 3 Baths
 2 Car
 0.08 Acre

PROPERTY DETAILS

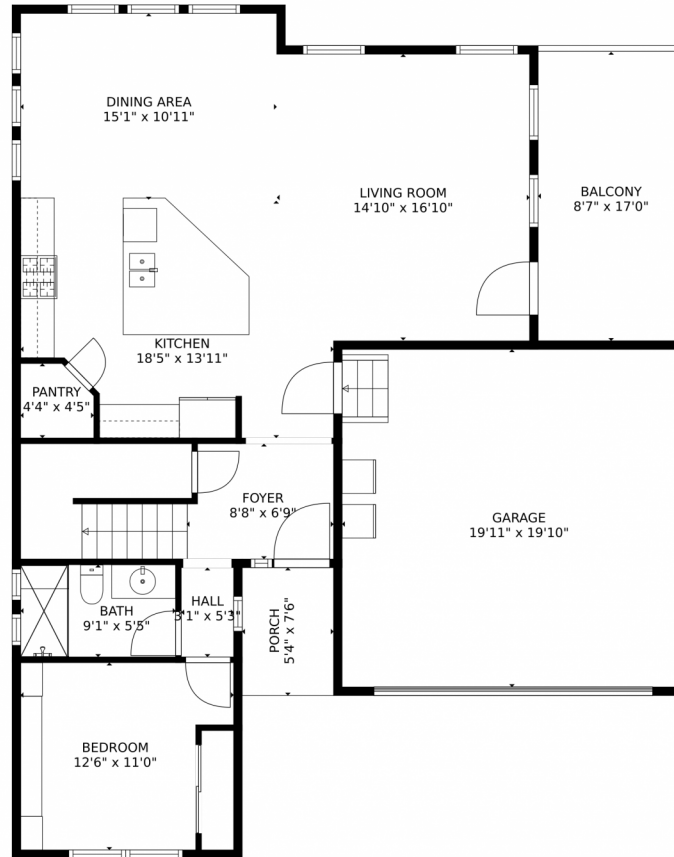
Welcome home to Sterling Ranch! This aggressively priced 2022 build is located in one of the best planned communities in the metro area. With access to community amenities and nearby attractions like Waterton Canyon and Chatfield Reservoir, this home offers convenience and outdoor opportunities. The high-end finishes and neutral colors create a warm and comforting space. The main floor features a bedroom and bathroom that can be used as a guest's quarters or a home office. The expansive kitchen with stone counters opens to the formal dining room, living room, and back deck for entertaining. Upstairs, you'll find a spacious primary suite with a walk-in closet and ensuite bathroom, along with two large bedrooms, a bathroom, and a convenient laundry area. The bonus loft space can be used for various purposes. This smart home also includes high-speed internet and assumable solar panels that significantly reduce electric bills. Don't miss out on this incredible home in Sterling Ranch!



Lauren Weiss
 720-485-1500
 lauren@laurenweiss.com
<https://www.laurenweiss.com>



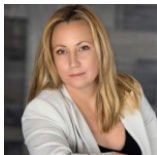
8433 Rush Creek Avenue, Littleton, CO 80125 – Main Level



TOTAL: 2212 sq. ft
FLOOR 1: 991 sq. ft, FLOOR 2: 1221 sq. ft
EXCLUDED AREAS: GARAGE: 396 sq. ft, PORCH: 40 sq. ft, BALCONY: 146 sq. ft
MEASUREMENTS CALCULATED BY V1Photos.com ARE DEEMED HIGHLY RELIABLE BUT NOT GUARANTEED.



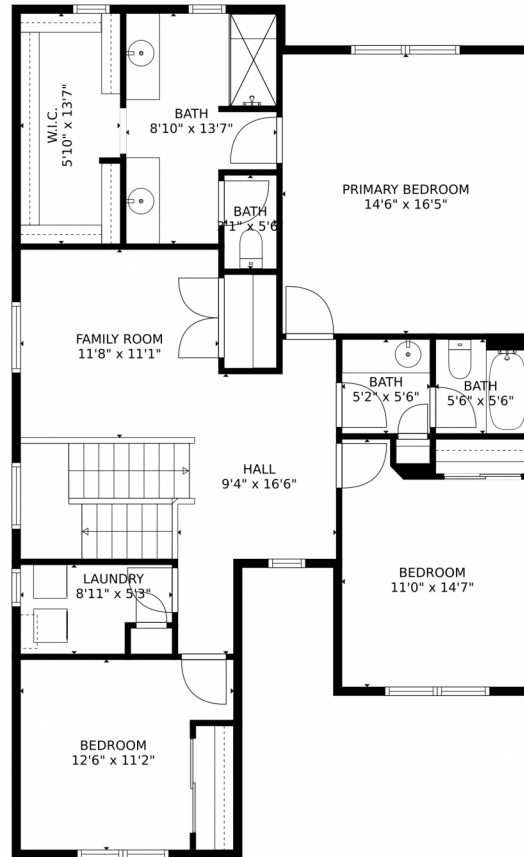
Disclaimer: Sizes and Dimensions are Approximate, Actual May Vary.



Lauren Weiss
720-485-1500
lauren@laurenweiss.com
<https://www.laurenweiss.com>



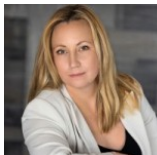
8433 Rush Creek Avenue, Littleton, CO 80125 – Upper Level



TOTAL: 2212 sq. ft
FLOOR 1: 991 sq. ft, FLOOR 2: 1221 sq. ft
EXCLUDED AREAS: GARAGE: 396 sq. ft, PORCH: 40 sq. ft, BALCONY: 146 sq. ft
MEASUREMENTS CALCULATED BY V1Photos.com ARE DEEMED HIGHLY RELIABLE BUT NOT GUARANTEED.



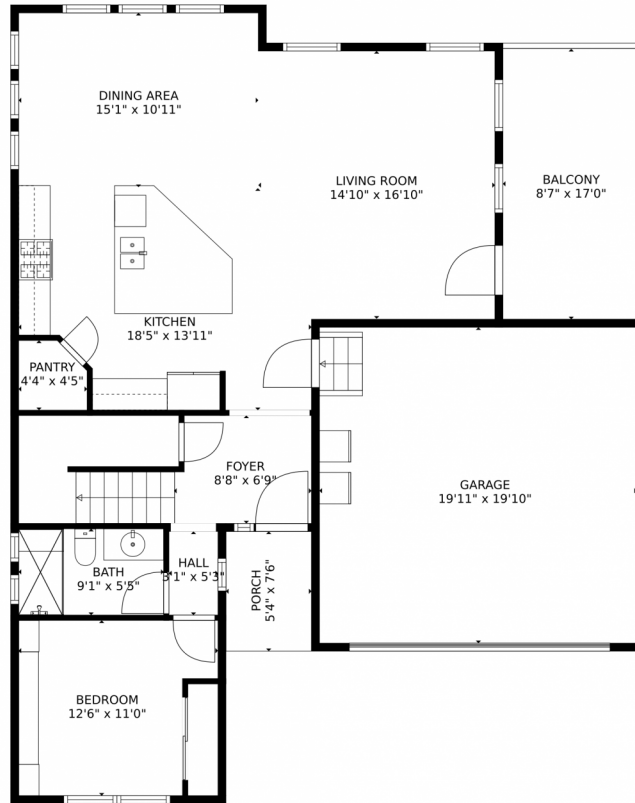
Disclaimer: Sizes and Dimensions are Approximate, Actual May Vary.



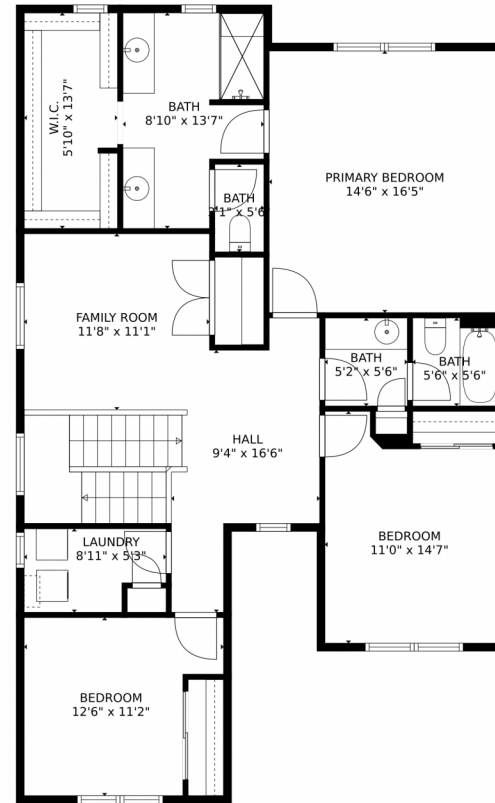
Lauren Weiss
720-485-1500
lauren@laurenweiss.com
<https://www.laurenweiss.com>



8433 Rush Creek Avenue, Littleton, CO 80125 – All Levels



FLOOR 1

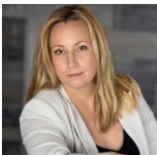


FLOOR 2

TOTAL: 2212 sq. ft
FLOOR 1: 991 sq. ft, FLOOR 2: 1221 sq. ft
EXCLUDED AREAS: GARAGE: 396 sq. ft, PORCH: 40 sq. ft, BALCONY: 146 sq. ft
MEASUREMENTS CALCULATED BY V1Photos.com ARE DEEMED HIGHLY RELIABLE BUT NOT GUARANTEED.



Disclaimer: Sizes and Dimensions are Approximate, Actual May Vary.



Lauren Weiss
720-485-1500
lauren@laurenweiss.com
<https://www.laurenweiss.com>



Scan code
for more
property
details

