



Single Family



3563 SQFT



6 Beds



4/1 Baths



2 Car



0.27 Acre



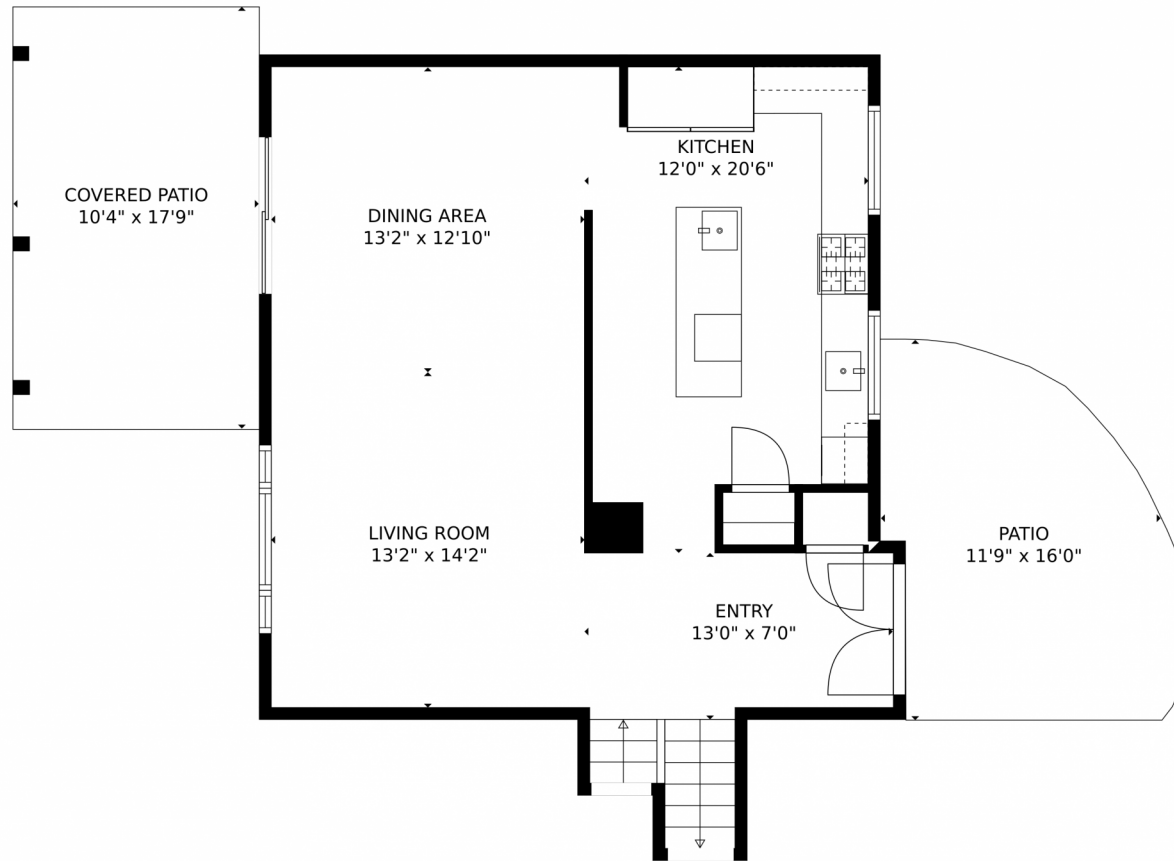
**Julio Quezada**  
720-882-3970  
julio@thepristineproperties.com



Scan code  
for more  
property  
details



3836 South Magnolia Way, Denver, CO 80237 – Main Level



**TOTAL: 3204 sq. ft**  
Below Ground: 576 sq. ft, FLOOR 2: 682 sq. ft, FLOOR 3: 714 sq. ft, FLOOR 4: 1232 sq. ft  
EXCLUDED AREAS: ELECTRICAL ROOM: 100 sq. ft, GARAGE: 472 sq. ft, PATIO: 167 sq. ft,  
COVERED PATIO: 185 sq. ft

MEASUREMENTS CALCULATED BY V1Photos.com ARE DEEMED HIGHLY RELIABLE BUT NOT GUARANTEED.



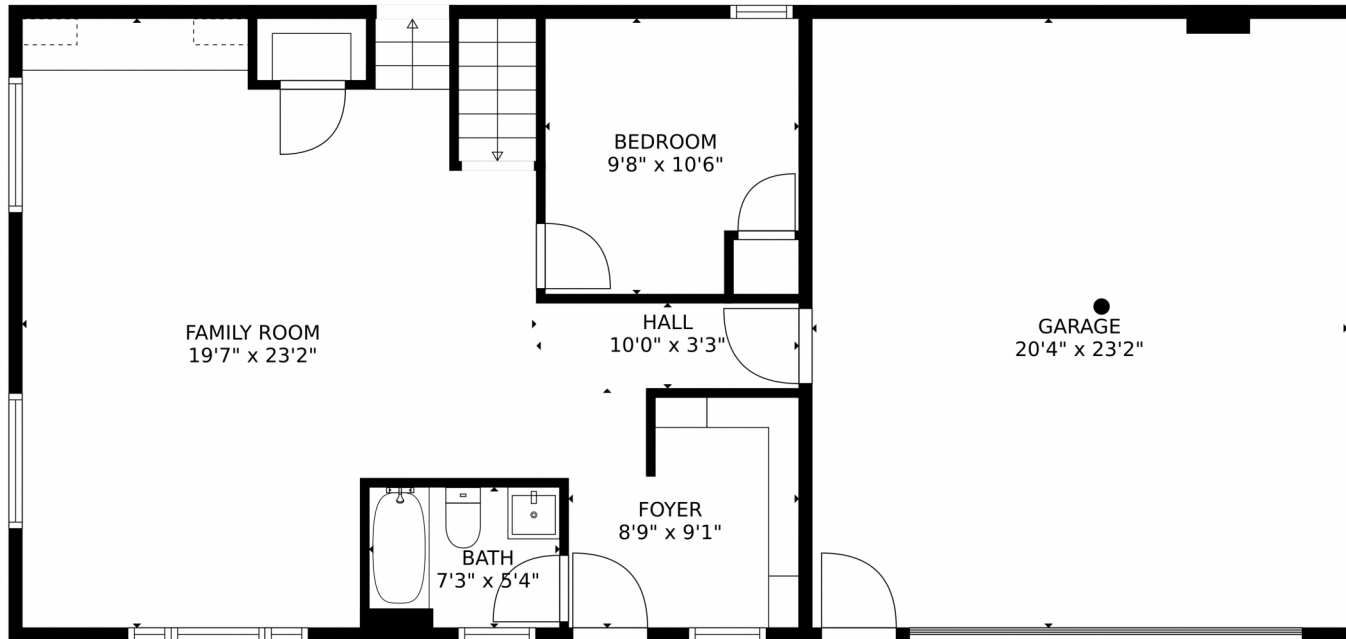
Disclaimer: Sizes and Dimensions are Approximate, Actual May Vary.



**Julio Quezada**  
720-882-3970  
julio@thepristineproperties.com



3836 South Magnolia Way, Denver, CO 80237 – Lower Main Level



**TOTAL: 3204 sq. ft**  
Below Ground: 576 sq. ft, FLOOR 2: 682 sq. ft, FLOOR 3: 714 sq. ft, FLOOR 4: 1232 sq. ft  
EXCLUDED AREAS: ELECTRICAL ROOM: 100 sq. ft, GARAGE: 472 sq. ft, PATIO: 167 sq. ft,  
COVERED PATIO: 185 sq. ft

MEASUREMENTS CALCULATED BY V1Photos.com ARE DEEMED HIGHLY RELIABLE BUT NOT GUARANTEED.



Disclaimer: Sizes and Dimensions are Approximate, Actual May Vary.

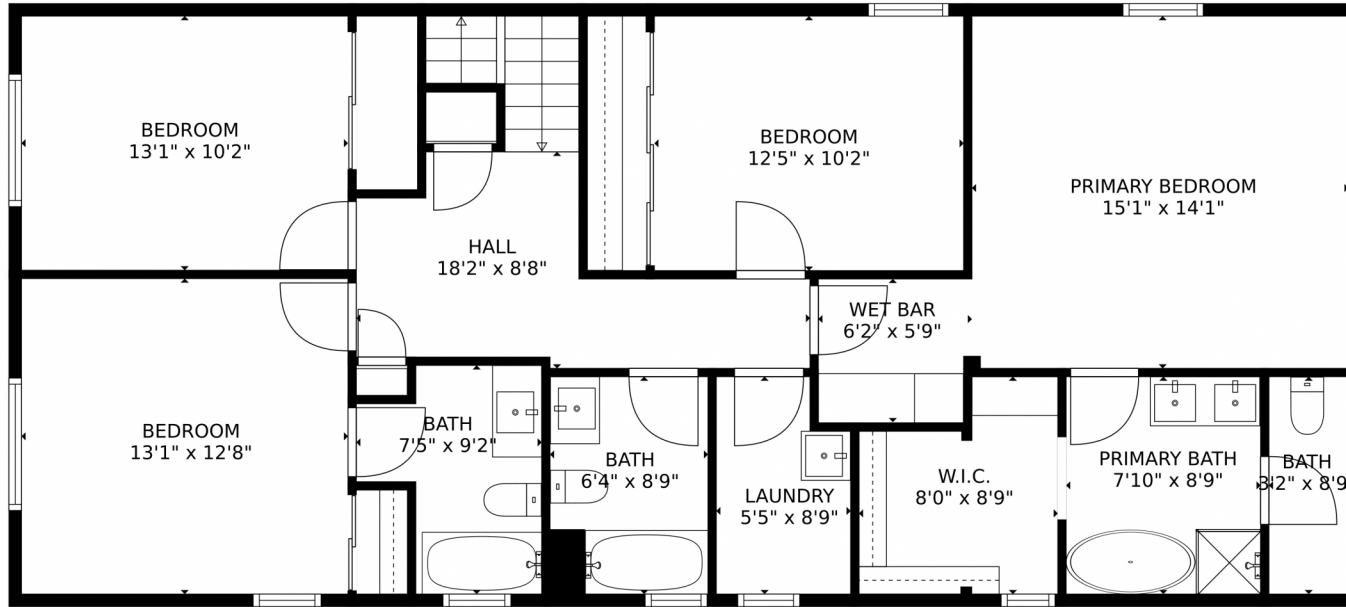


**Julio Quezada**  
720-882-3970  
julio@thepristineproperties.com





3836 South Magnolia Way, Denver, CO 80237 – Upper Level



**TOTAL: 3204 sq. ft**  
Below Ground: 576 sq. ft, FLOOR 2: 682 sq. ft, FLOOR 3: 714 sq. ft, FLOOR 4: 1232 sq. ft  
EXCLUDED AREAS: ELECTRICAL ROOM: 100 sq. ft, GARAGE: 472 sq. ft, PATIO: 167 sq. ft,  
COVERED PATIO: 185 sq. ft

MEASUREMENTS CALCULATED BY V1Photos.com ARE DEEMED HIGHLY RELIABLE BUT NOT GUARANTEED.



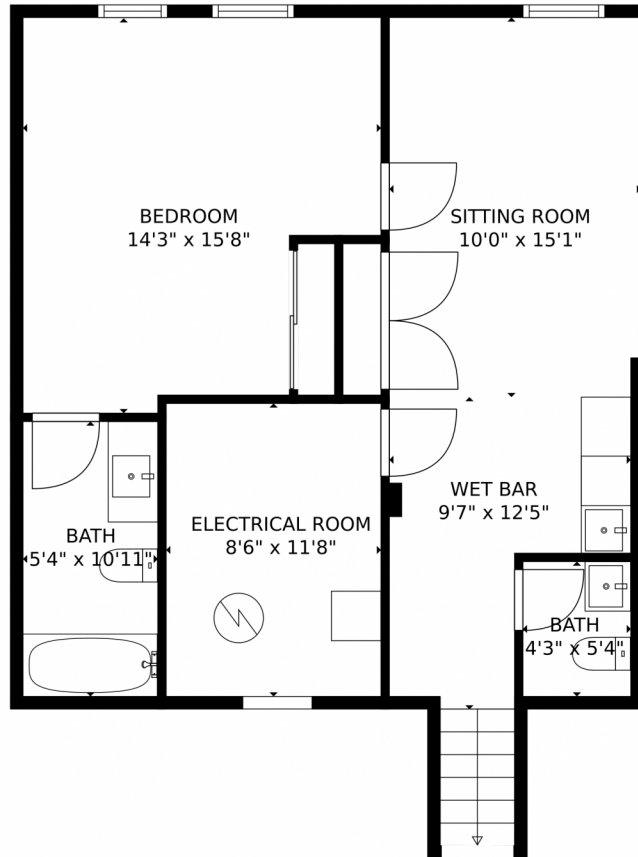
Disclaimer: Sizes and Dimensions are Approximate, Actual May Vary.



**Julio Quezada**  
720-882-3970  
julio@thepristineproperties.com



3836 South Magnolia Way, Denver, CO 80237 – Lower Level



**TOTAL: 3204 sq. ft**  
Below Ground: 576 sq. ft, FLOOR 2: 682 sq. ft, FLOOR 3: 714 sq. ft, FLOOR 4: 1232 sq. ft  
EXCLUDED AREAS: ELECTRICAL ROOM: 100 sq. ft, GARAGE: 472 sq. ft, PATIO: 167 sq. ft,  
COVERED PATIO: 185 sq. ft

MEASUREMENTS CALCULATED BY V1Photos.com ARE DEEMED HIGHLY RELIABLE BUT NOT GUARANTEED.



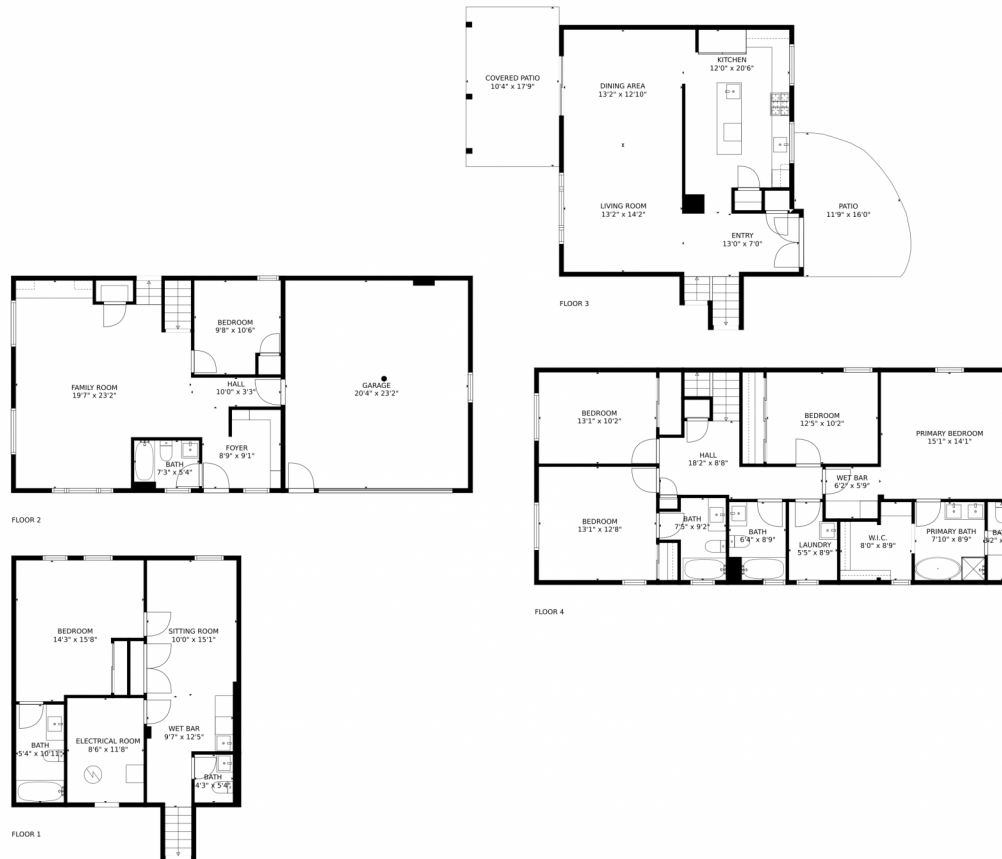
Disclaimer: Sizes and Dimensions are Approximate, Actual May Vary.



**Julio Quezada**  
720-882-3970  
julio@thepristineproperties.com



# 3836 South Magnolia Way, Denver, CO 80237 – All Levels



**TOTAL: 3204 sq. ft**  
Below Ground: 576 sq. ft, FLOOR 2: 682 sq. ft, FLOOR 3: 714 sq. ft, FLOOR 4: 1232 sq. ft  
EXCLUDED AREAS: ELECTRICAL ROOM: 100 sq. ft, GARAGE: 472 sq. ft, PATIO: 167 sq. ft,  
COVERED PATIO: 185 sq. ft

MEASUREMENTS CALCULATED BY V1Photos.com ARE DEEMED HIGHLY RELIABLE BUT NOT GUARANTEED.



Disclaimer: Sizes and Dimensions are Approximate, Actual May Vary.



**Julio Quezada**  
720-882-3970  
julio@thepristineproperties.com

