

Single Family

1818 SQFT

3 Beds

3 Baths

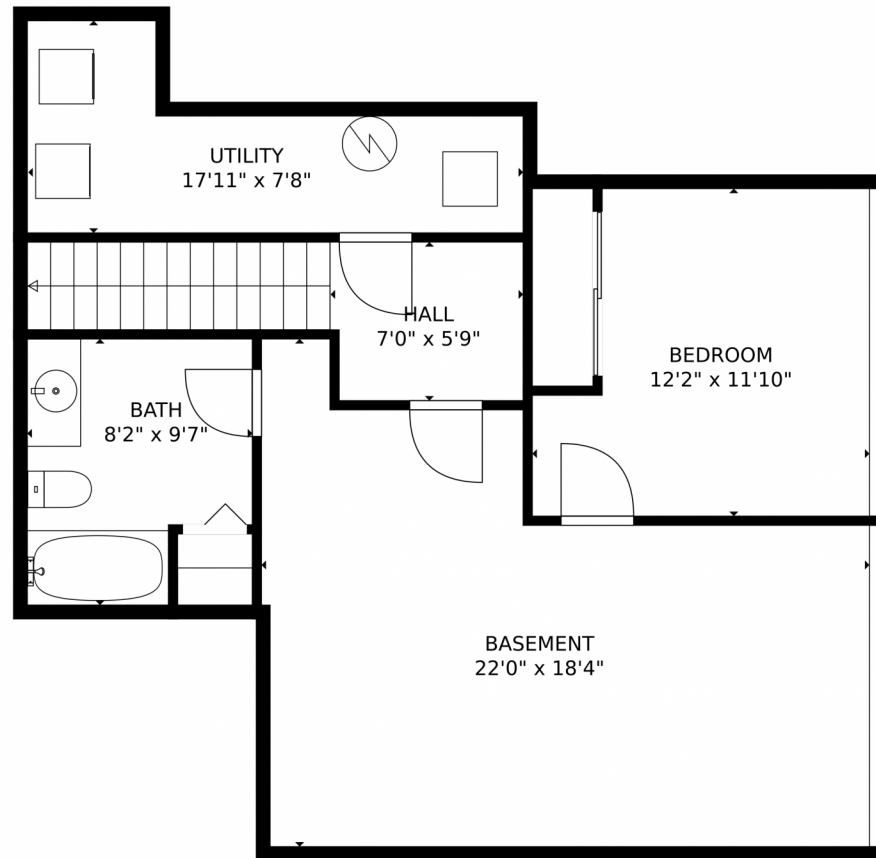
2 Car



**Jordan Kermes**  
952-956-2958  
jkermes@wedgewoodhomesrealty.com  
<https://colorado.wedgewoodhomesrealty.com>



608 Cima Vista Point, Colorado Springs, CO 80916 – Lower Level



**TOTAL: 1648 sq. ft**  
Below Ground: 627 sq. ft, FLOOR 2: 1021 sq. ft  
EXCLUDED AREAS: UTILITY: 92 sq. ft, GARAGE: 425 sq. ft, PORCH: 58 sq. ft,  
BALCONY: 40 sq. ft  
MEASUREMENTS CALCULATED BY V1Photos.com ARE DEEMED HIGHLY RELIABLE BUT NOT GUARANTEED.



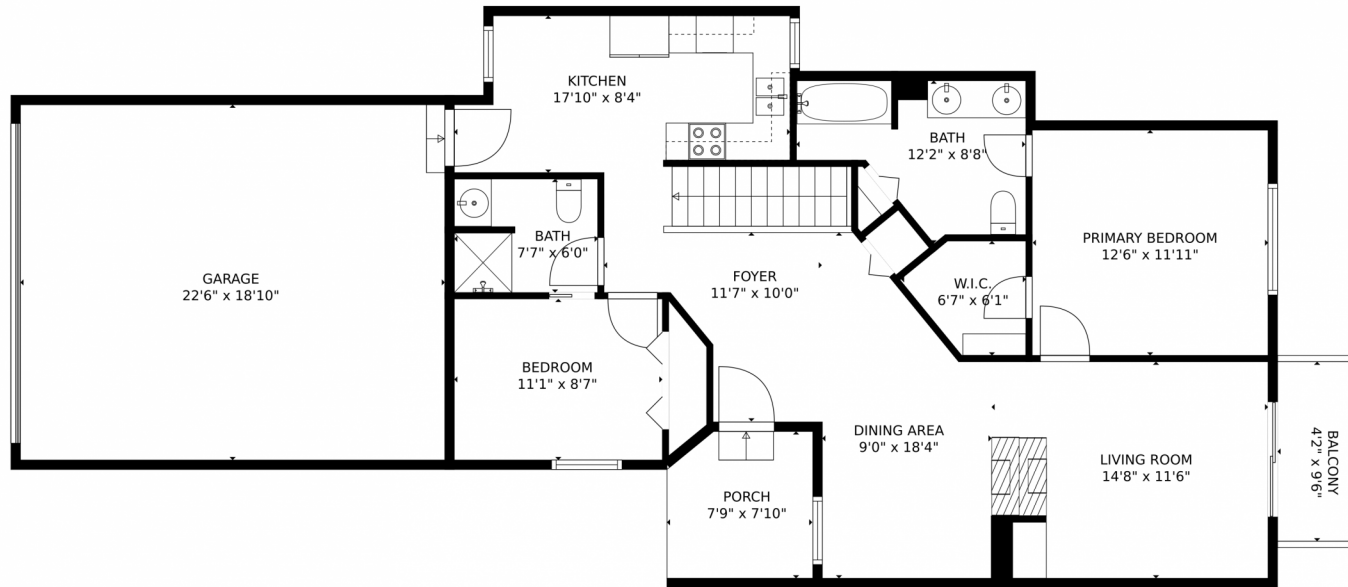
Disclaimer: Sizes and Dimensions are Approximate, Actual May Vary.



**Jordan Kermes**  
952-956-2958  
jkermes@wedgewoodhomesrealty.com  
<https://colorado.wedgewoodhomesrealty.com>



# 608 Cima Vista Point, Colorado Springs, CO 80916 – Main Level



**TOTAL: 1648 sq. ft**

Below Ground: 627 sq. ft, FLOOR 2: 1021 sq. ft  
EXCLUDED AREAS: UTILITY: 92 sq. ft, GARAGE: 425 sq. ft, PORCH: 58 sq. ft,  
BALCONY: 40 sq. ft

MEASUREMENTS CALCULATED BY V1Photos.com ARE DEEMED HIGHLY RELIABLE BUT NOT GUARANTEED.



Disclaimer: Sizes and Dimensions are Approximate, Actual May Vary.



**Jordan Kermes**

952-956-2958

[jkermes@wedgewoodhomesrealty.com](mailto:jkermes@wedgewoodhomesrealty.com)

<https://colorado.wedgewoodhomesrealty.com>



Scan code  
for more  
property  
details



# 608 Cima Vista Point, Colorado Springs, CO 80916 – All Levels



**TOTAL: 1648 sq. ft**

Below Ground: 627 sq. ft, FLOOR 2: 1021 sq. ft

EXCLUDED AREAS: UTILITY: 92 sq. ft, GARAGE: 425 sq. ft, PORCH: 58 sq. ft,  
BALCONY: 40 sq. ft

MEASUREMENTS CALCULATED BY V1Photos.com ARE DEEMED HIGHLY RELIABLE BUT NOT GUARANTEED.



Disclaimer: Sizes and Dimensions are Approximate, Actual May Vary.



**Jordan Kermes**

952-956-2958

[jkermes@wedgewoodhomesrealty.com](mailto:jkermes@wedgewoodhomesrealty.com)

<https://colorado.wedgewoodhomesrealty.com>



Scan code  
for more  
property  
details

