



5317 NE 50th Terrace  
 Tamarac, FL 33319  
 COMMUNITY: Manor Parc



Single Family



1907 SQFT



4 Beds



2/1 Baths



2 Car



0.07 Acre



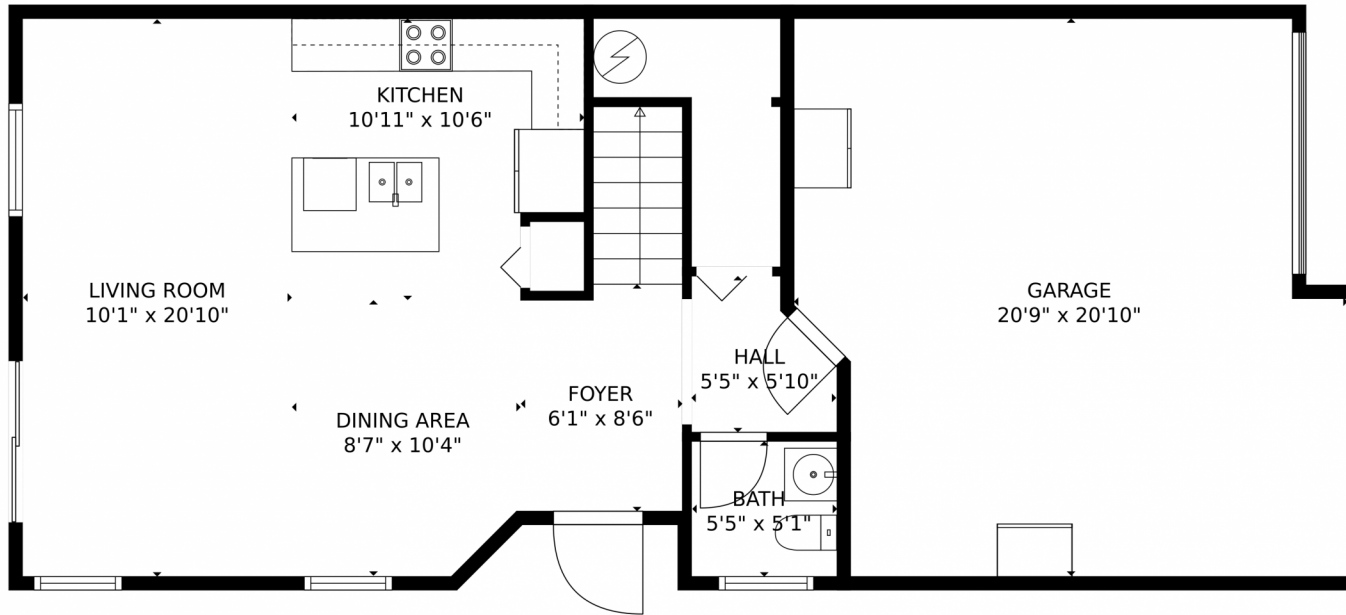
**Matt Smith**  
 954-632-7344  
 matt@sflrealtysource.com



Scan code  
 for more  
 property  
 details



5317 NE 50th Terrace, Tamarac, FL 33319 – 1st Level



**TOTAL: 1606 sq. ft**  
FLOOR 1: 592 sq. ft, FLOOR 2: 1014 sq. ft  
EXCLUDED AREAS: GARAGE: 392 sq. ft  
MEASUREMENTS CALCULATED BY V1PHOTOS.COM ARE DEEMED HIGHLY RELIABLE BUT NOT GUARANTEED.



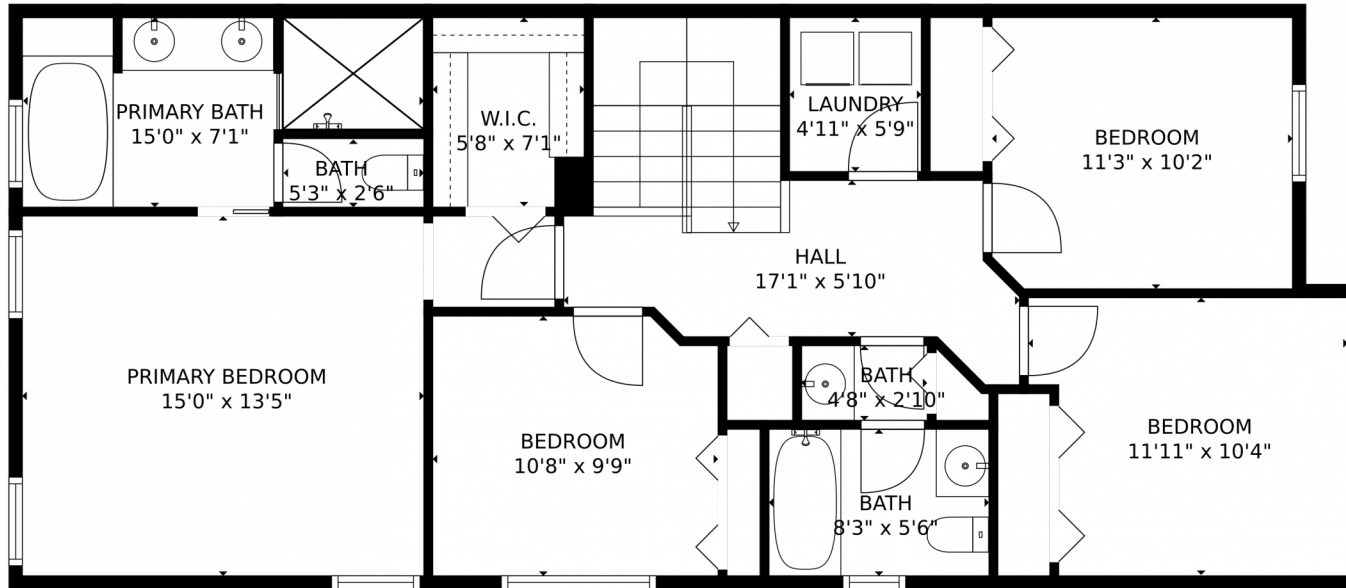
Disclaimer: Sizes and Dimensions are Approximate, Actual May Vary.



**Matt Smith**  
954-632-7344  
matt@sflrealtysource.com



5317 NE 50th Terrace, Tamarac, FL 33319 – 2nd Level



**TOTAL: 1606 sq. ft**  
FLOOR 1: 592 sq. ft, FLOOR 2: 1014 sq. ft  
EXCLUDED AREAS: GARAGE: 392 sq. ft  
MEASUREMENTS CALCULATED BY V1Photos.com ARE DEEMED HIGHLY RELIABLE BUT NOT GUARANTEED.



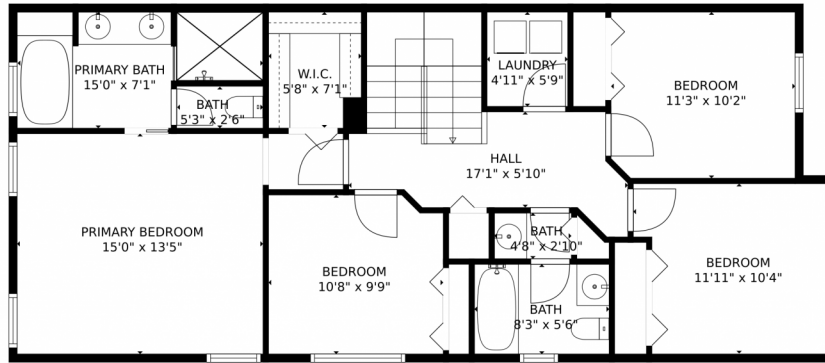
Disclaimer: Sizes and Dimensions are Approximate, Actual May Vary.



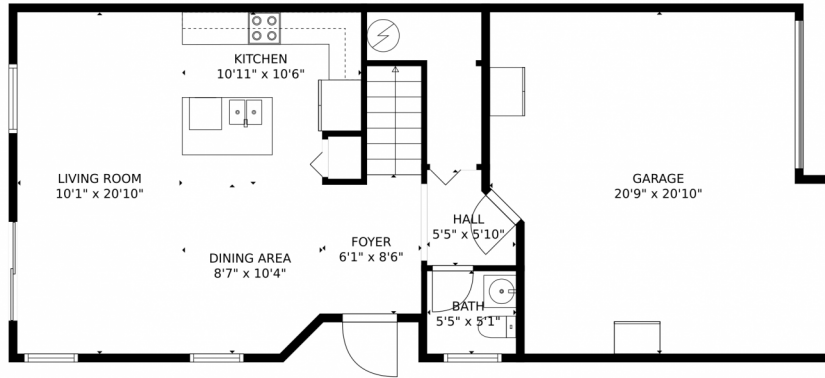
**Matt Smith**  
954-632-7344  
matt@sflrealtysource.com



# 5317 NE 50th Terrace, Tamarac, FL 33319 – All Levels



FLOOR 2



FLOOR 1

**TOTAL: 1606 sq. ft**  
FLOOR 1: 592 sq. ft, FLOOR 2: 1014 sq. ft  
EXCLUDED AREAS: GARAGE: 392 sq. ft  
MEASUREMENTS CALCULATED BY V1Photos.COM ARE DEEMED HIGHLY RELIABLE BUT NOT GUARANTEED.



Disclaimer: Sizes and Dimensions are Approximate, Actual May Vary.



**Matt Smith**  
954-632-7344  
matt@sflrealtysource.com

