






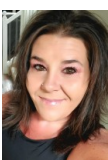
GORGEOUS SHERMAN PARK CONTEMPORARY



 Single Family
  1576 SQFT
  3 Beds
  2/1 Baths
  2 Car
  0.08 Acre

PROPERTY DETAILS

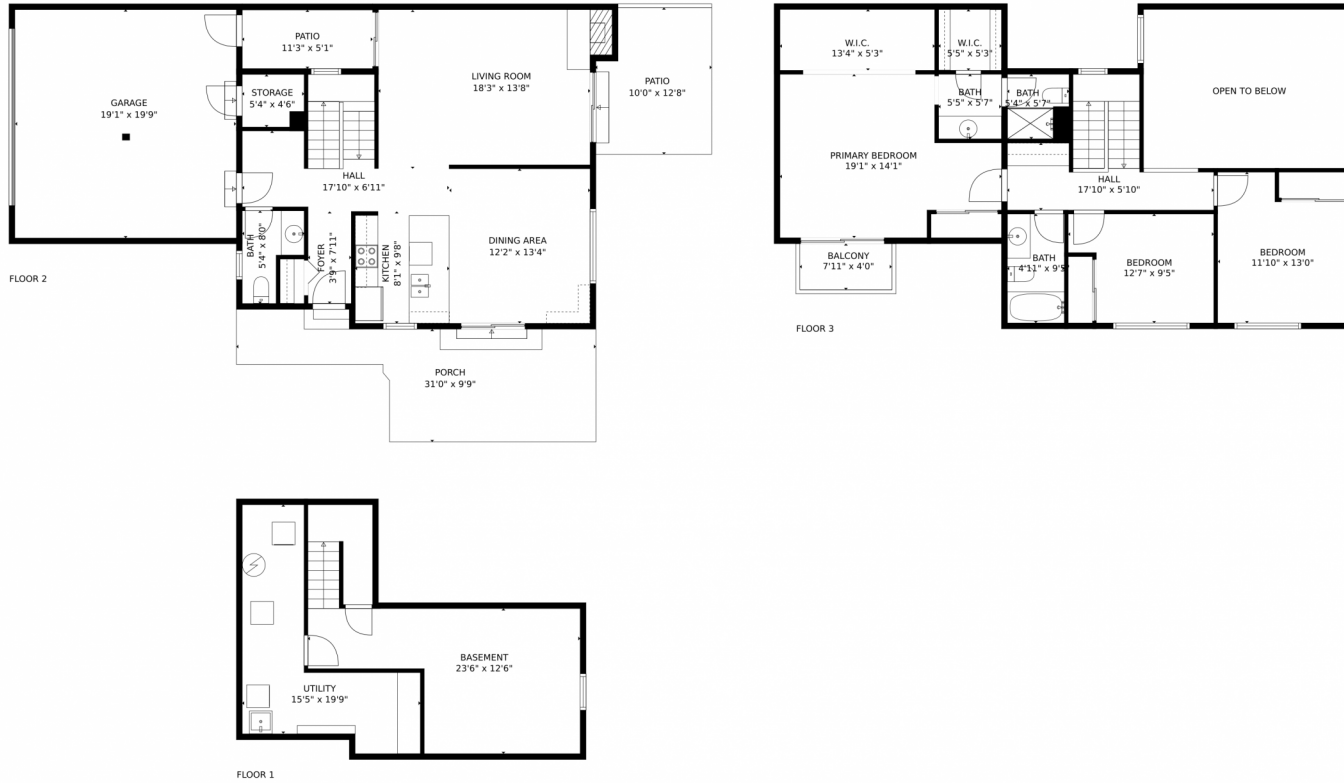
This contemporary 2-story home is in a great location backing to a park and greenbelt. The main level features an open kitchen and dining room concept with white cabinets, a large breakfast bar, slab granite countertops, and stainless steel appliances. The living room is spacious with a custom finished floor, a fireplace, and a sliding door leading to the backyard patio. There is also a half bath and pantry/laundry closet on this level. Upstairs, you will find the primary suite with a walk-in closet, en-suite bath, and a private balcony. There are two generously sized bedrooms, a full bath, a storage nook, and an open area overlooking the living room on the second floor. The basement has a large finished family room and a storage/utility room with a second laundry location. This well cared for home has had many updates including remodeled kitchen and baths, new carpet, interior and exterior paint, a brand new roof and gutters, and more. The backyard is maintained by the HOA. Don't miss the chance to own this truly unique home! Close to historic downtown Littleton!



RaNae Rodriguez
303-875-4091
ranae@mscadvisors.com
<http://www.mscadvisors.com>



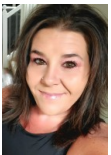
1055 West Peakview Circle, Littleton, CO 80120 – All Levels



TOTAL: 1849 sq. ft
Below Ground: 281 sq. ft, FLOOR 2: 708 sq. ft, FLOOR 3: 860 sq. ft
EXCLUDED AREAS: UTILITY: 168 sq. ft, GARAGE: 377 sq. ft, STORAGE: 24 sq. ft,
PATIO: 175 sq. ft, PORCH: 231 sq. ft, FIREPLACE: 6 sq. ft,
BALCONY: 32 sq. ft, LOW CEILING: 20 sq. ft, OPEN TO BELOW: 250 sq. ft
MEASUREMENTS CALCULATED BY V1Photos.com ARE DEEMED HIGHLY RELIABLE BUT NOT GUARANTEED.



Disclaimer: Sizes and Dimensions are Approximate, Actual May Vary.



RaNae Rodriguez
303-875-4091
ranae@mscadvisors.com
<http://www.mscadvisors.com>



Scan code
for more
property
details

