



4264 South Washington Street  
Englewood, CO 80113



Single Family



1800 SQFT



4 Beds



2/1 Baths



1 Car



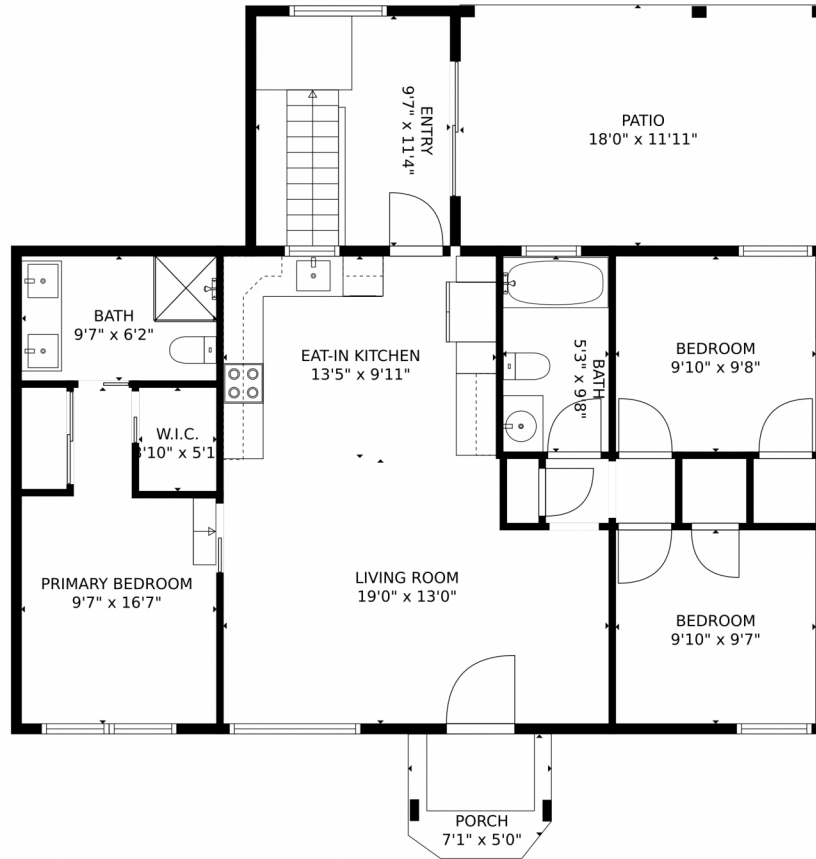
**Paul D. Andrews**  
720-270-1306  
andrews.realtor@gmail.com  
<https://www.greaterdenverhomesite.com/paul-andrews/>



Scan code  
for more  
property  
details



# 4264 South Washington Street, Englewood, CO 80113 – Main Level



**TOTAL: 1600 sq. ft**  
Below Ground: 585 sq. ft, FLOOR 2: 0 sq. ft, FLOOR 3: 1015 sq. ft  
EXCLUDED AREAS: GARAGE: 314 sq. ft, STORAGE: 179 sq. ft, PORCH: 41 sq. ft,  
PATIO: 214 sq. ft

MEASUREMENTS CALCULATED BY V1Photos.COM ARE DEEMED HIGHLY RELIABLE BUT NOT GUARANTEED.



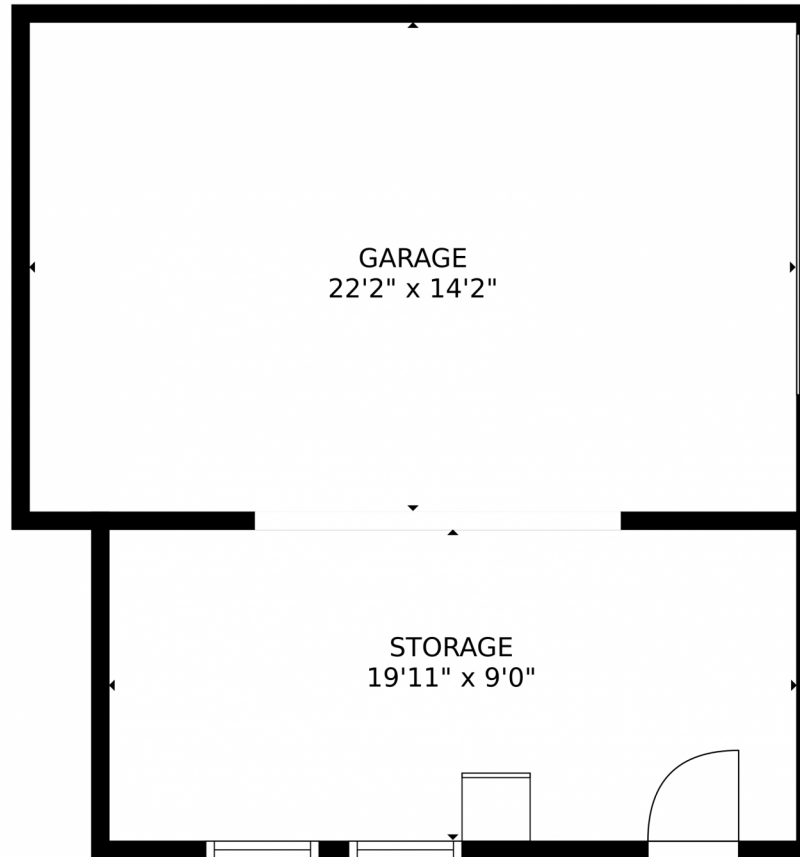
Disclaimer: Sizes and Dimensions are Approximate, Actual May Vary.



**Paul D. Andrews**  
720-270-1306  
andrews.realtor@gmail.com  
<https://www.greaterdenverhomesite.com/paul-andrews/>



4264 South Washington Street, Englewood, CO 80113 – Garage



**TOTAL: 1600 sq. ft**  
Below Ground: 585 sq. ft, FLOOR 2: 0 sq. ft, FLOOR 3: 1015 sq. ft  
EXCLUDED AREAS: GARAGE: 314 sq. ft, STORAGE: 179 sq. ft, PORCH: 41 sq. ft,  
PATIO: 214 sq. ft  
MEASUREMENTS CALCULATED BY V1Photos.com ARE DEEMED HIGHLY RELIABLE BUT NOT GUARANTEED.



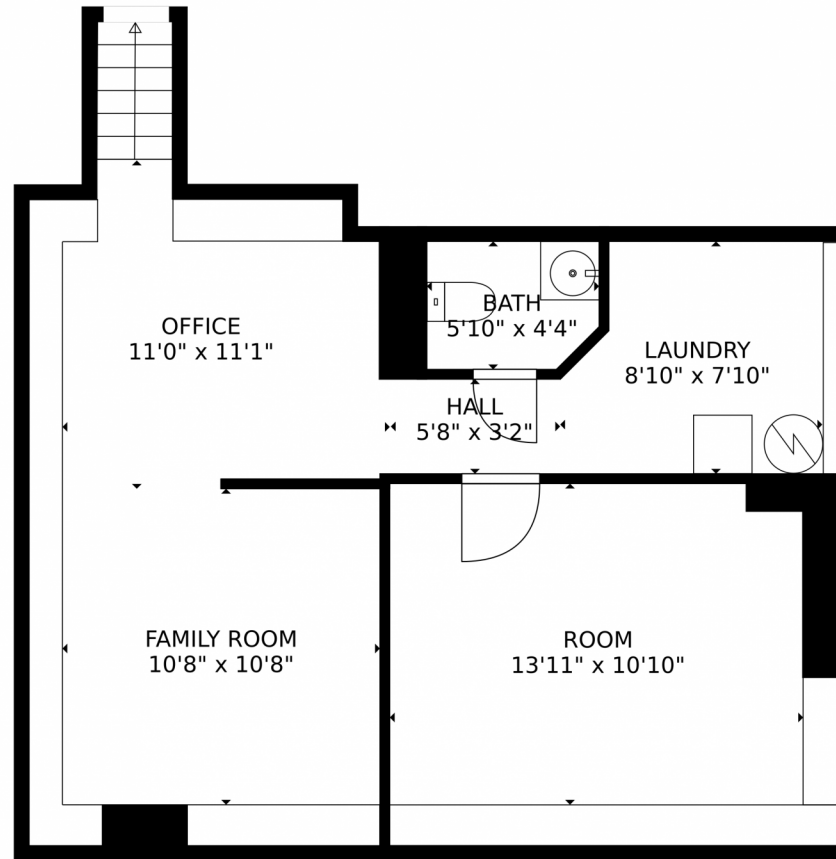
Disclaimer: Sizes and Dimensions are Approximate, Actual May Vary.



**Paul D. Andrews**  
720-270-1306  
andrews.realtor@gmail.com  
<https://www.greaterdenverhomesite.com/paul-andrews/>



Scan code  
for more  
property  
details



**TOTAL: 1600 sq. ft**  
Below Ground: 585 sq. ft, FLOOR 2: 0 sq. ft, FLOOR 3: 1015 sq. ft  
EXCLUDED AREAS: GARAGE: 314 sq. ft, STORAGE: 179 sq. ft, PORCH: 41 sq. ft,  
PATIO: 214 sq. ft  
MEASUREMENTS CALCULATED BY V1Photos.com ARE DEEMED HIGHLY RELIABLE BUT NOT GUARANTEED.



Disclaimer: Sizes and Dimensions are Approximate, Actual May Vary.

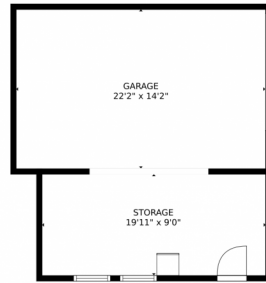


**Paul D. Andrews**  
720-270-1306  
andrews.realtor@gmail.com  
<https://www.greaterdenverhomesite.com/paul-andrews/>

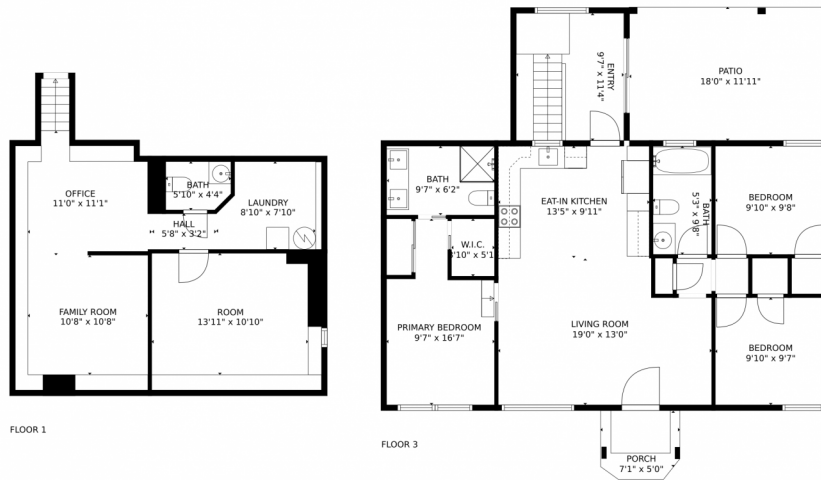




# 4264 South Washington Street, Englewood, CO 80113 – All Levels



FLOOR 2



FLOOR 1

FLOOR 3

**TOTAL: 1600 sq. ft**

Below Ground: 585 sq. ft, FLOOR 2: 0 sq. ft, FLOOR 3: 1015 sq. ft  
EXCLUDED AREAS: GARAGE: 314 sq. ft, STORAGE: 179 sq. ft, PORCH: 41 sq. ft,  
PATIO: 214 sq. ft

MEASUREMENTS CALCULATED BY V1Photos.com ARE DEEMED HIGHLY RELIABLE BUT NOT GUARANTEED.



Disclaimer: Sizes and Dimensions are Approximate, Actual May Vary.



**Paul D. Andrews**  
720-270-1306  
andrews.realtor@gmail.com  
<https://www.greaterdenverhomesite.com/paul-andrews/>

