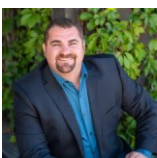




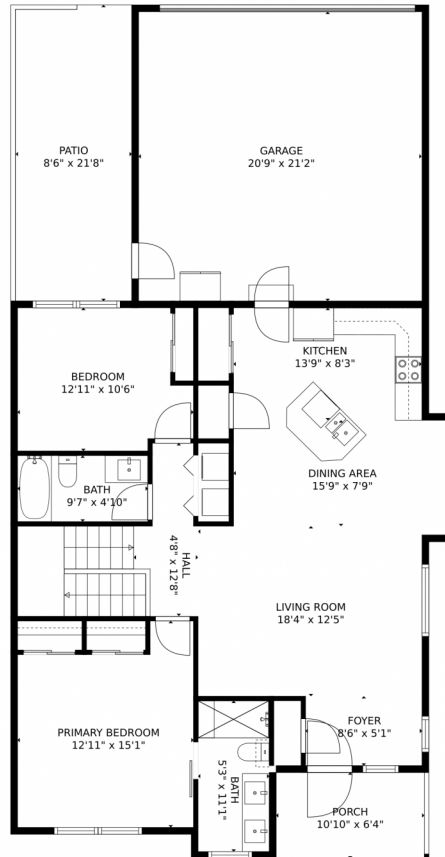
 Single Family  2400 SQFT  4 Beds  3 Baths  2 Car



Brad Inhulsen
970-584-4144
brad@searsrealestate.com



3615 Porto Fino Avenue, Evans, CO 80620 – Main Floor



TOTAL: 1992 sq. ft
Below Ground: 889 sq. ft, FLOOR 2: 1103 sq. ft
EXCLUDED AREAS: ELECTRICAL ROOM: 129 sq. ft, PATIO: 184 sq. ft, PORCH: 68 sq. ft,
GARAGE: 440 sq. ft

MEASUREMENTS CALCULATED BY V1Photos.com ARE DEEMED HIGHLY RELIABLE BUT NOT GUARANTEED.



Disclaimer: Sizes and Dimensions are Approximate, Actual May Vary.



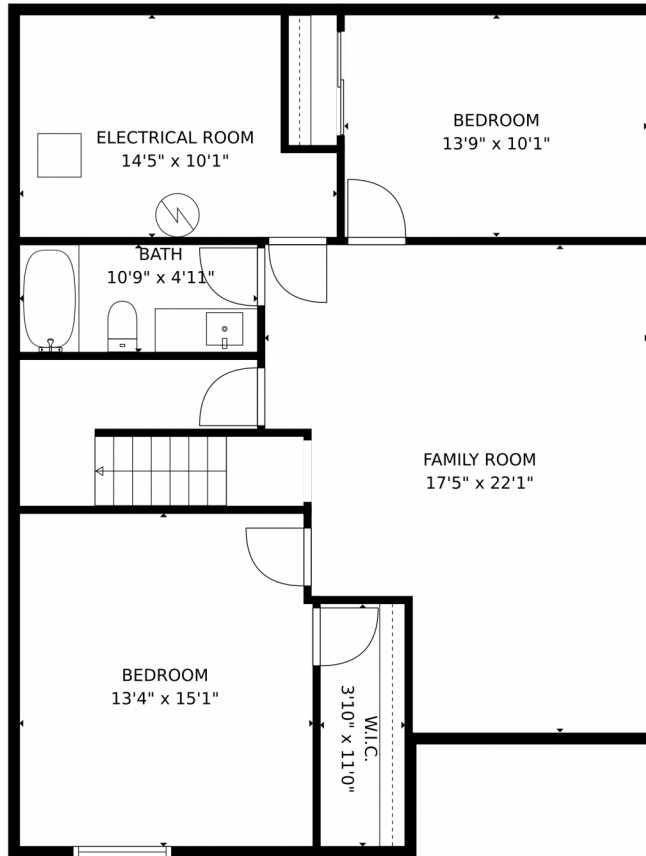
Brad Inhulsen
970-584-4144
brad@searsrealestate.com



Scan code
for more
property
details



3615 Porto Fino Avenue, Evans, CO 80620 – Basement



TOTAL: 1992 sq. ft
Below Ground: 889 sq. ft, FLOOR 2: 1103 sq. ft
EXCLUDED AREAS: ELECTRICAL ROOM: 129 sq. ft, PATIO: 184 sq. ft, PORCH: 68 sq. ft,
GARAGE: 440 sq. ft

MEASUREMENTS CALCULATED BY V1Photos.com ARE DEEMED HIGHLY RELIABLE BUT NOT GUARANTEED.



Disclaimer: Sizes and Dimensions are Approximate, Actual May Vary.



Brad Inhulsen
970-584-4144
brad@searsrealestate.com



3615 Porto Fino Avenue, Evans, CO 80620 – All Floors



TOTAL: 1992 sq. ft
Below Ground: 889 sq. ft, FLOOR 2: 1103 sq. ft
EXCLUDED AREAS: ELECTRICAL ROOM: 129 sq. ft, PATIO: 184 sq. ft, PORCH: 68 sq. ft,
GARAGE: 440 sq. ft

MEASUREMENTS CALCULATED BY V1Photos.COM ARE DEEMED HIGHLY RELIABLE BUT NOT GUARANTEED.



Disclaimer: Sizes and Dimensions are Approximate, Actual May Vary.



Brad Inhulsen
970-584-4144
brad@searsrealestate.com

