

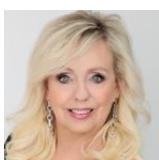


6335 King Court
 Denver, CO 80221
 COMMUNITY: Berkley

MLS # 6521627
 PRICE \$560,000



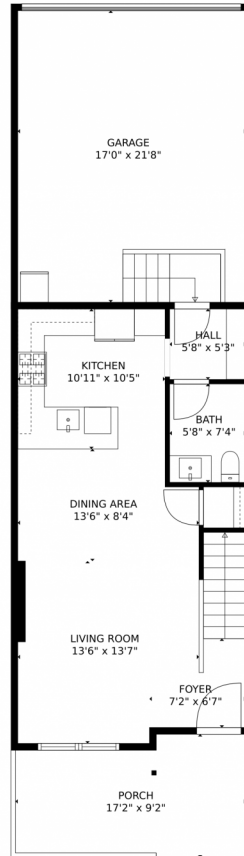
Townhouse 1523 SQFT 2 Beds 2/1 Baths 2 Car 0.04 Acre



Sheryll White
 303-668-8818
 sheryll@exitrealtydtc.com



6335 King Court, Denver, CO 80221 – Main Level



TOTAL: 1454 sq. ft
FLOOR 1: 539 sq. ft, FLOOR 2: 915 sq. ft
EXCLUDED AREAS: GARAGE: 368 sq. ft, PORCH: 141 sq. ft

MEASUREMENTS CALCULATED BY V1Photos.com ARE DEEMED HIGHLY RELIABLE BUT NOT GUARANTEED.



Disclaimer: Sizes and Dimensions are Approximate, Actual May Vary.



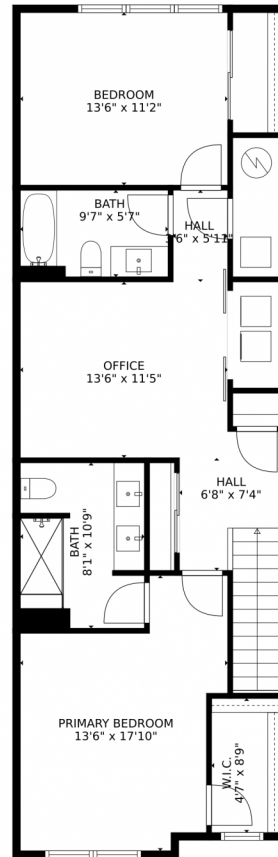
Sheryll White
303-668-8818
sheryll@exitrealtydtc.com



Scan code
for more
property
details



6335 King Court, Denver, CO 80221 – Upper Level



TOTAL: 1454 sq. ft
FLOOR 1: 539 sq. ft, FLOOR 2: 915 sq. ft
EXCLUDED AREAS: GARAGE: 368 sq. ft, PORCH: 141 sq. ft

MEASUREMENTS CALCULATED BY V1Photos.com ARE DEEMED HIGHLY RELIABLE BUT NOT GUARANTEED.



Disclaimer: Sizes and Dimensions are Approximate, Actual May Vary.



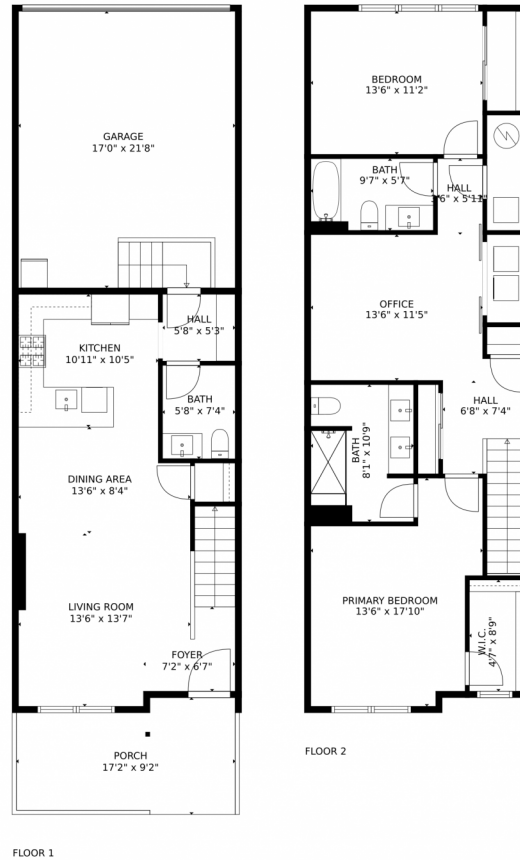
Sheryll White
303-668-8818
sheryll@exitrealtydtc.com



Scan code for more property details

A QR code is provided for scanning to access more property details. To the left of the QR code is a small icon of a smartphone displaying a green checkmark.

6335 King Court, Denver, CO 80221 – All Levels



TOTAL: 1454 sq. ft
FLOOR 1: 539 sq. ft, FLOOR 2: 915 sq. ft
EXCLUDED AREAS: GARAGE: 368 sq. ft, PORCH: 141 sq. ft

MEASUREMENTS CALCULATED BY V1Photos.COM ARE DEEMED HIGHLY RELIABLE BUT NOT GUARANTEED.



Disclaimer: Sizes and Dimensions are Approximate, Actual May Vary.



Sheryll White
303-668-8818
sheryll@exitrealtydtc.com

