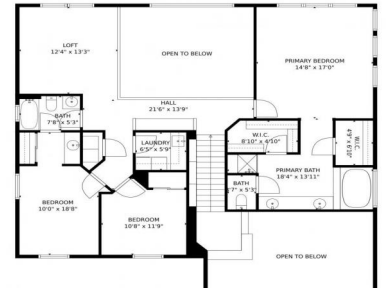





2205 Creekside Drive, Longmont, CO 80504 - Second Floor



 Single Family

 2798 SQFT

 2 Beds

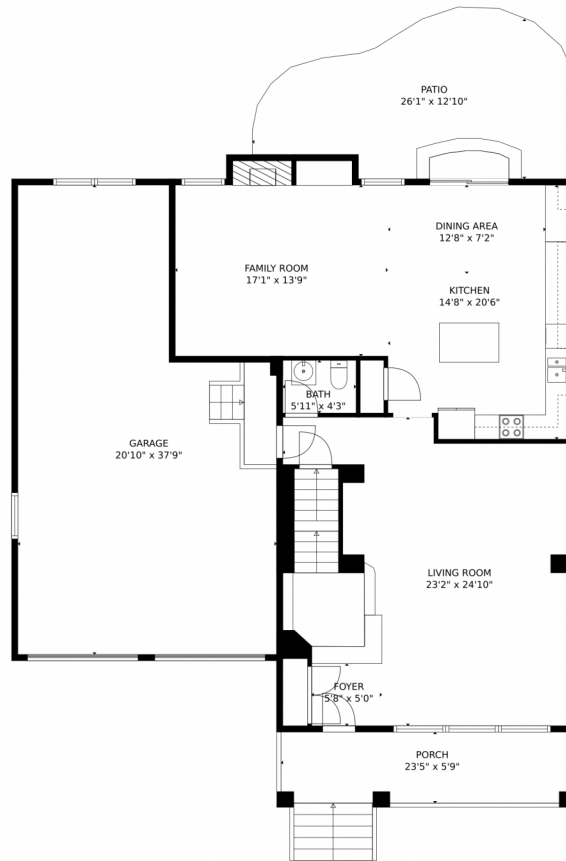
 2/1 Baths



Taylor Haas
 303-665-7368
 taylorh@coloradorpm.com
<https://www.coloradorpm.com/available-rental-properties-denver>



2205 Creekside Drive, Longmont, CO 80504 – Main Floor



TOTAL: 1958 sq. ft
Below Ground: 0 sq. ft, FLOOR 2: 607 sq. ft, FLOOR 3: 1351 sq. ft
EXCLUDED AREAS: UNFINISHED BASEMENT: 1067 sq. ft, LOW CEILING: 538 sq. ft, GARAGE: 663 sq. ft,
PATIO: 275 sq. ft, PORCH: 134 sq. ft, OPEN TO BELOW: 448 sq. ft

MEASUREMENTS CALCULATED BY V1Photos.com ARE DEEMED HIGHLY RELIABLE BUT NOT GUARANTEED.



Disclaimer: Sizes and Dimensions are Approximate, Actual May Vary.



Taylor Haas

303-665-7368

taylorh@coloradorpm.com

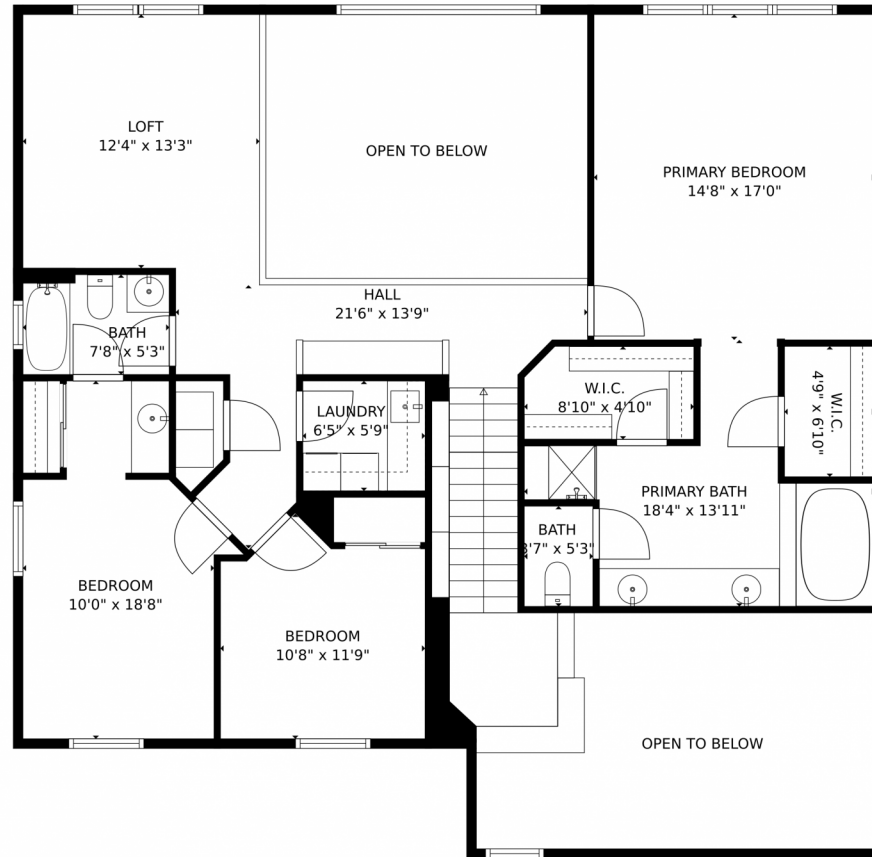
<https://www.coloradorpm.com/available-rental-properties-denver>



Scan code
for more
property
details



2205 Creekside Drive, Longmont, CO 80504 – Second Floor



TOTAL: 1958 sq. ft
Below Ground: 0 sq. ft, FLOOR 2: 607 sq. ft, FLOOR 3: 1351 sq. ft
EXCLUDED AREAS: UNFINISHED BASEMENT: 1067 sq. ft, LOW CEILING: 538 sq. ft, GARAGE: 663 sq. ft,
PATIO: 275 sq. ft, PORCH: 134 sq. ft, OPEN TO BELOW: 448 sq. ft
MEASUREMENTS CALCULATED BY V1Photos.com ARE DEEMED HIGHLY RELIABLE BUT NOT GUARANTEED.



Disclaimer: Sizes and Dimensions are Approximate, Actual May Vary.



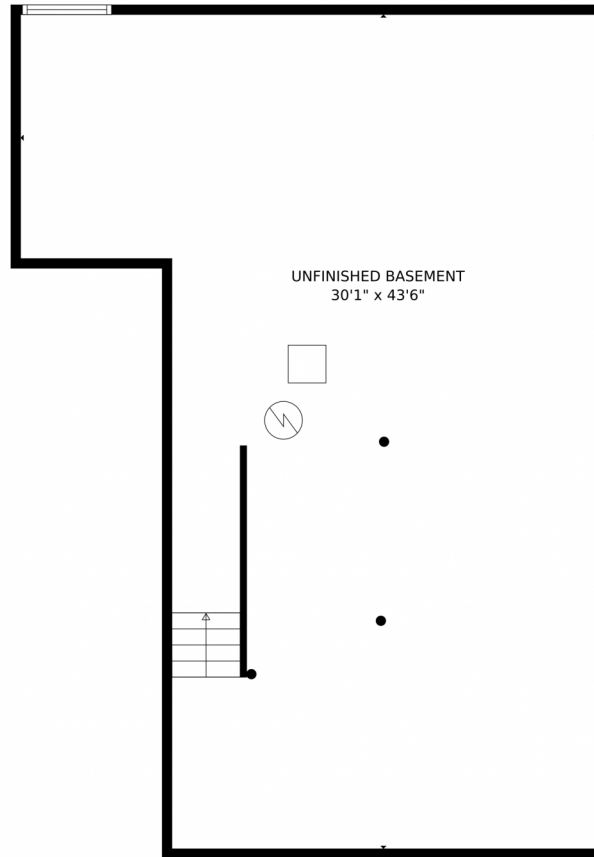
Taylor Haas
303-665-7368
taylorh@coloradorpm.com
<https://www.coloradorpm.com/available-rental-properties-denver>



Scan code
for more
property
details



2205 Creekside Drive, Longmont, CO 80504 – Basement



TOTAL: 1958 sq. ft
Below Ground: 0 sq. ft, FLOOR 2: 607 sq. ft, FLOOR 3: 1351 sq. ft
EXCLUDED AREAS: UNFINISHED BASEMENT: 1067 sq. ft, LOW CEILING: 538 sq. ft, GARAGE: 663 sq. ft,
PATIO: 275 sq. ft, PORCH: 134 sq. ft, OPEN TO BELOW: 448 sq. ft
MEASUREMENTS CALCULATED BY V1Photos.com ARE DEEMED HIGHLY RELIABLE BUT NOT GUARANTEED.



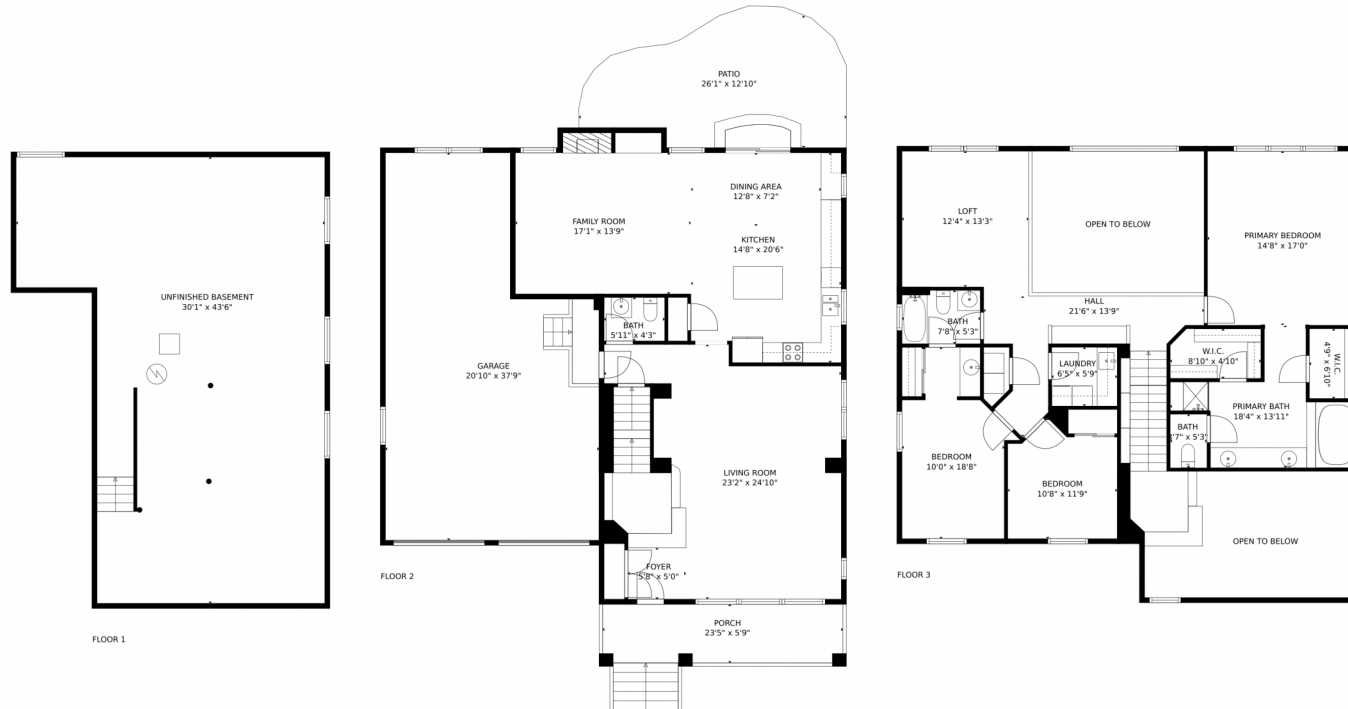
Disclaimer: Sizes and Dimensions are Approximate, Actual May Vary.



Taylor Haas
303-665-7368
taylorh@coloradorpm.com
<https://www.coloradorpm.com/available-rental-properties-denver>



2205 Creekside Drive, Longmont, CO 80504 – All Floors



TOTAL: 1958 sq. ft
Below Ground: 0 sq. ft, FLOOR 2: 607 sq. ft, FLOOR 3: 1351 sq. ft
EXCLUDED AREAS: UNFINISHED BASEMENT: 1067 sq. ft, LOW CEILING: 538 sq. ft, GARAGE: 663 sq. ft,
PATIO: 275 sq. ft, PORCH: 134 sq. ft, OPEN TO BELOW: 448 sq. ft

MEASUREMENTS CALCULATED BY V1Photos.com ARE DEEMED HIGHLY RELIABLE BUT NOT GUARANTEED.



Disclaimer: Sizes and Dimensions are Approximate, Actual May Vary.



Taylor Haas
303-665-7368
taylorh@coloradorpm.com
<https://www.coloradorpm.com/available-rental-properties-denver>



Scan code
for more
property
details

