



Single Family



1498 SQFT



2 Beds



2/1 Baths



2 Car



0.1 Acre

## PROPERTY DETAILS

Welcome to this exquisite property in The Meadows community in Castle Rock, CO. This single-family home offers a sophisticated living experience with 2 bedrooms and 2.75 bathrooms. The entrance foyer sets the tone with dark hardwood flooring and a tray ceiling. The living room is a masterpiece with dark hardwood floors, a tray ceiling, and a notable chandelier. The kitchen is a chef's dream with a center island, stone countertops, and stainless steel appliances. Step outside onto the patio and enjoy the breathtaking mountain view. With its elegant design and luxurious features, this property is a true gem. Schedule a showing today and experience luxury living in Castle Rock.



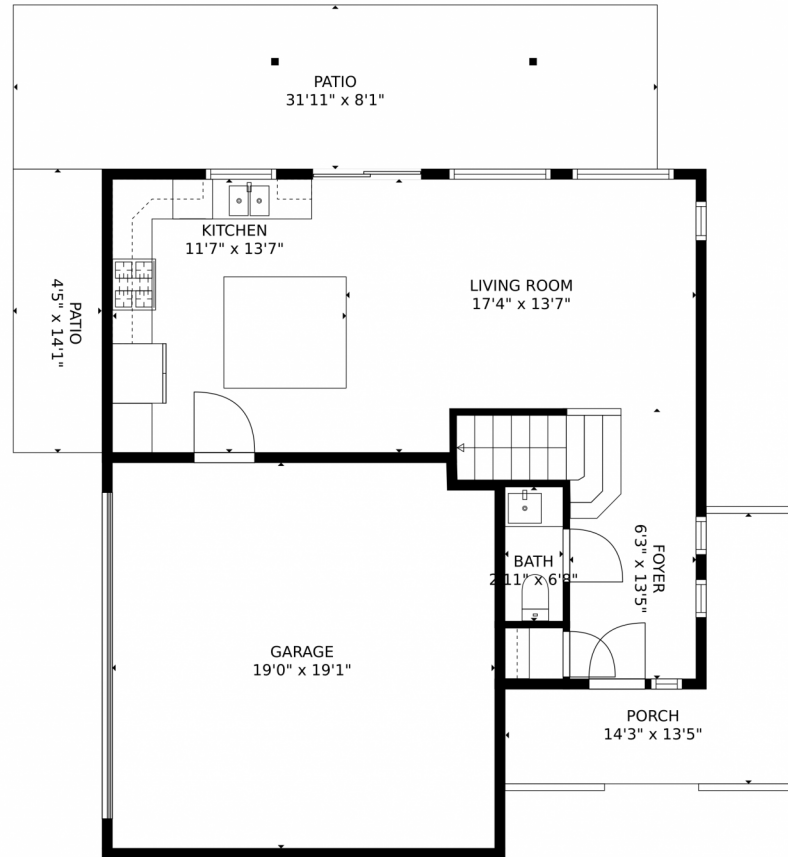
**Tonie Benetti**  
303-210-7336  
tonie@tbkrealstate.com  
<https://www.tbkrealstate.com>



Scan code  
for more  
property  
details



# 3708 Celestial Avenue, Castle Rock, CO 80109 – Main Level



**TOTAL: 1385 sq. ft**  
FLOOR 1: 502 sq. ft, FLOOR 2: 883 sq. ft  
EXCLUDED AREAS: GARAGE: 359 sq. ft, PORCH: 105 sq. ft, PATIO: 322 sq. ft  
MEASUREMENTS CALCULATED BY V1Photos.com ARE DEEMED HIGHLY RELIABLE BUT NOT GUARANTEED.



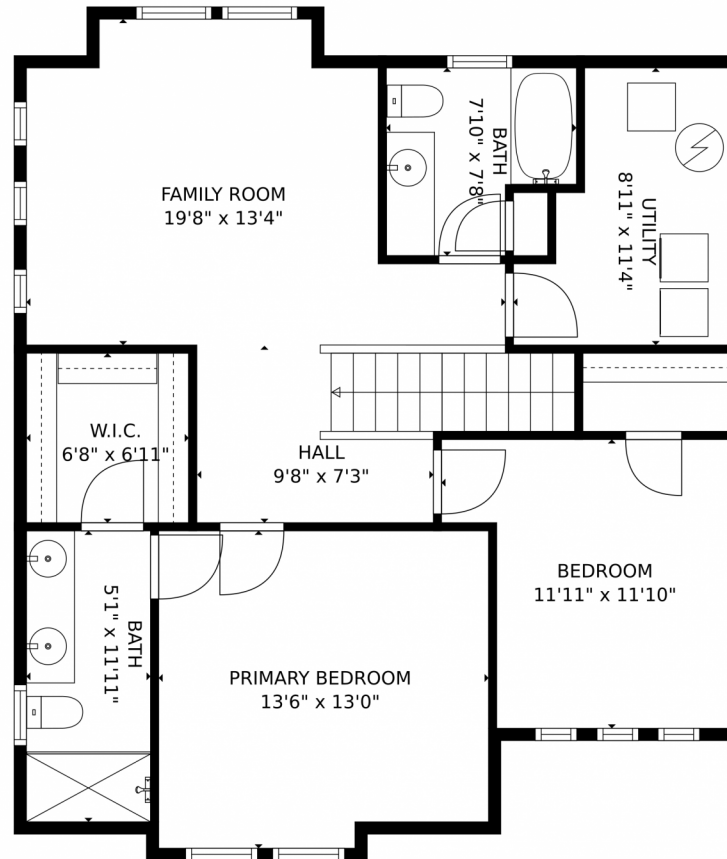
Disclaimer: Sizes and Dimensions are Approximate, Actual May Vary.



**Tonie Benetti**  
303-210-7336  
tonie@tbkrealstate.com  
<https://www.tbkrealstate.com>



# 3708 Celestial Avenue, Castle Rock, CO 80109 – Second Level



**TOTAL: 1385 sq. ft**  
FLOOR 1: 502 sq. ft, FLOOR 2: 883 sq. ft  
EXCLUDED AREAS: GARAGE: 359 sq. ft, PORCH: 105 sq. ft, PATIO: 322 sq. ft  
MEASUREMENTS CALCULATED BY V1Photos.com ARE DEEMED HIGHLY RELIABLE BUT NOT GUARANTEED.



Disclaimer: Sizes and Dimensions are Approximate, Actual May Vary.



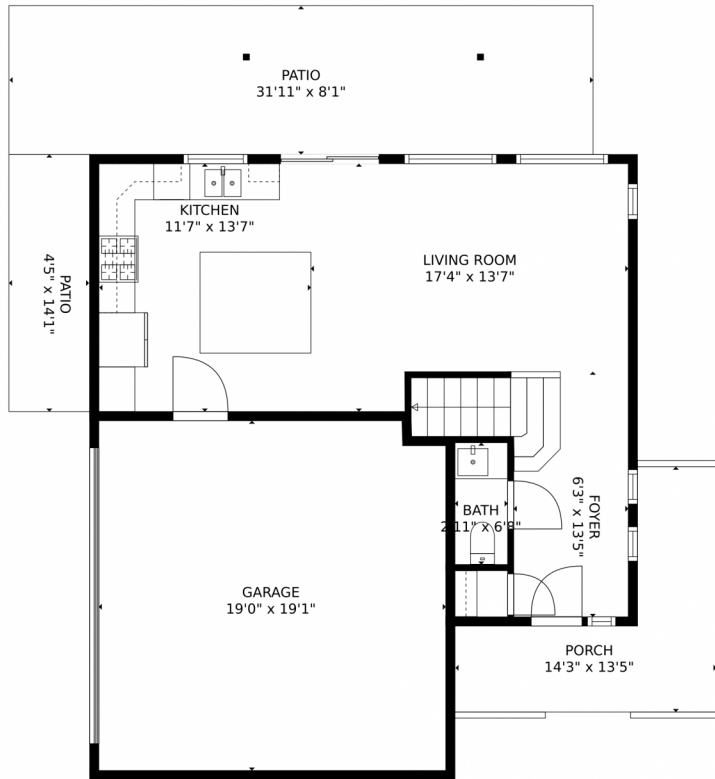
**Tonie Benetti**  
303-210-7336  
tonie@tbkrealstate.com  
<https://www.tbkrealstate.com>



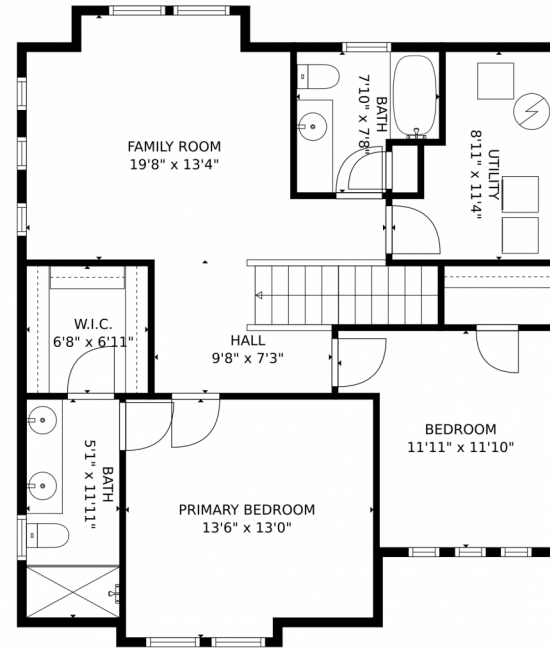
Scan code  
for more  
property  
details



# 3708 Celestial Avenue, Castle Rock, CO 80109 – All Levels



FLOOR 1



FLOOR 2

**TOTAL: 1385 sq. ft**  
FLOOR 1: 502 sq. ft, FLOOR 2: 883 sq. ft  
EXCLUDED AREAS: GARAGE: 359 sq. ft, PORCH: 105 sq. ft, PATIO: 322 sq. ft  
MEASUREMENTS CALCULATED BY V1Photos.COM ARE DEEMED HIGHLY RELIABLE BUT NOT GUARANTEED.



Disclaimer: Sizes and Dimensions are Approximate, Actual May Vary.



**Tonie Benetti**  
303-210-7336  
tonie@tbkrealstate.com  
<https://www.tbkrealstate.com>



Scan code  
for more  
property  
details

