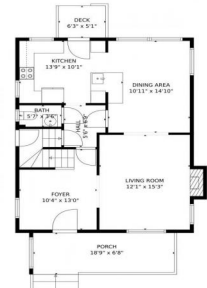




1206 Josephine Street, Denver, CO 80206 - Main Level



 Single Family  1537 SQFT

## PROPERTY DETAILS

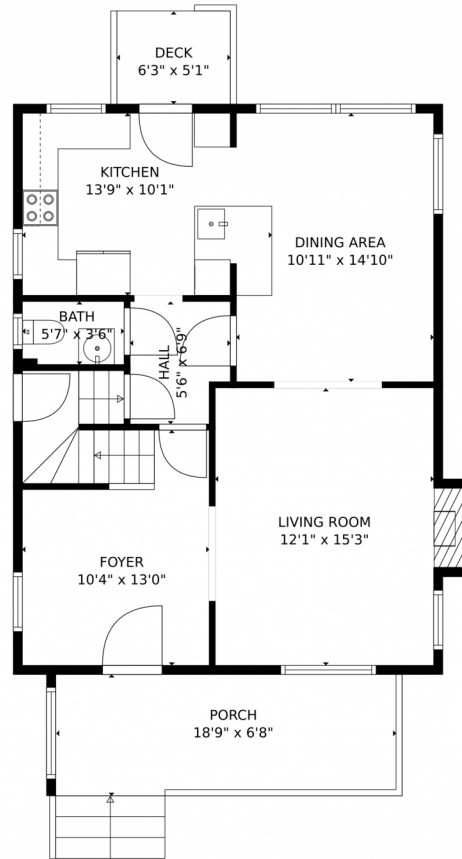
Welcome to 1206 Josephine Street in Denver, CO. This stunning single-family property offers 1537 sqft of living space, creating a comfortable environment for you and your family. The interior features a spacious living room with light hardwood floors and an elegant chandelier. The kitchen is equipped with light stone countertops, stylish light fixtures, and stainless steel appliances. The bedrooms are well-appointed with vaulted ceilings and ceiling fans. Outdoor spaces include a deck, front porch, and patio for outdoor entertaining. Located near schools, parks, and shopping centers, this property is perfect for families. Don't miss out on this beautiful home.



**Taylor Haas**  
 303-665-7368  
 taylorh@coloradorpm.com  
<https://www.coloradorpm.com/available-rental-properties-denver>



# 1206 Josephine Street, Denver, CO 80206 – Main Level



**TOTAL: 1733 sq. ft**  
Below Ground: 347 sq. ft, FLOOR 2: 694 sq. ft, FLOOR 3: 692 sq. ft  
EXCLUDED AREAS: UNFINISHED BASEMENT: 223 sq. ft, LOW CEILING: 122 sq. ft, PORCH: 128 sq. ft,  
DECK: 32 sq. ft, FIREPLACE: 6 sq. ft

MEASUREMENTS CALCULATED BY V1Photos.com ARE DEEMED HIGHLY RELIABLE BUT NOT GUARANTEED.



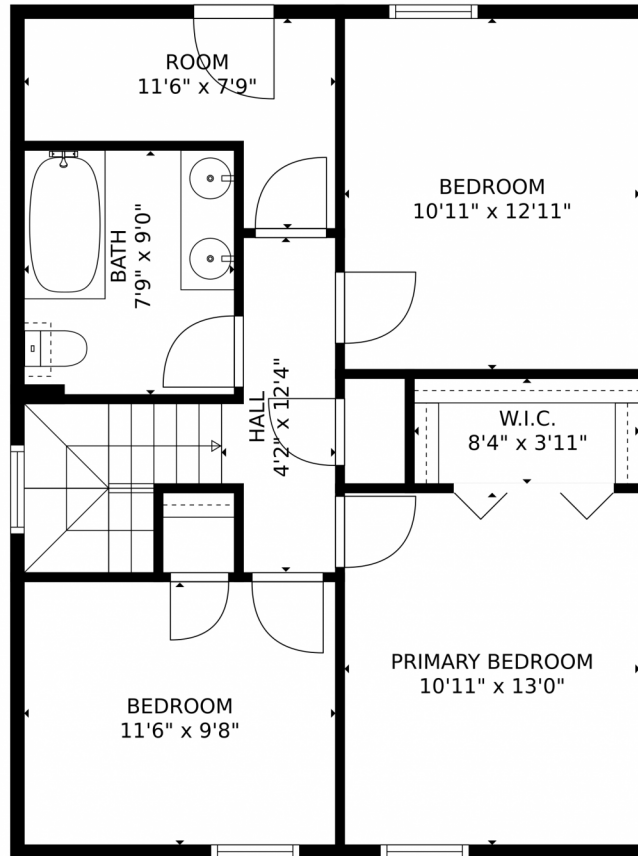
Disclaimer: Sizes and Dimensions are Approximate, Actual May Vary.



**Taylor Haas**  
303-665-7368  
taylorh@coloradorpm.com  
<https://www.coloradorpm.com/available-rental-properties-denver>



# 1206 Josephine Street, Denver, CO 80206 – Second Level



**TOTAL: 1733 sq. ft**  
Below Ground: 347 sq. ft, FLOOR 2: 694 sq. ft, FLOOR 3: 692 sq. ft  
EXCLUDED AREAS: UNFINISHED BASEMENT: 223 sq. ft, LOW CEILING: 122 sq. ft, PORCH: 128 sq. ft,  
DECK: 32 sq. ft, FIREPLACE: 6 sq. ft

MEASUREMENTS CALCULATED BY V1Photos.com ARE DEEMED HIGHLY RELIABLE BUT NOT GUARANTEED.



Disclaimer: Sizes and Dimensions are Approximate, Actual May Vary.



**Taylor Haas**

303-665-7368

taylorh@coloradorm.com

<https://www.coloradorm.com/available-rental-properties-denver>

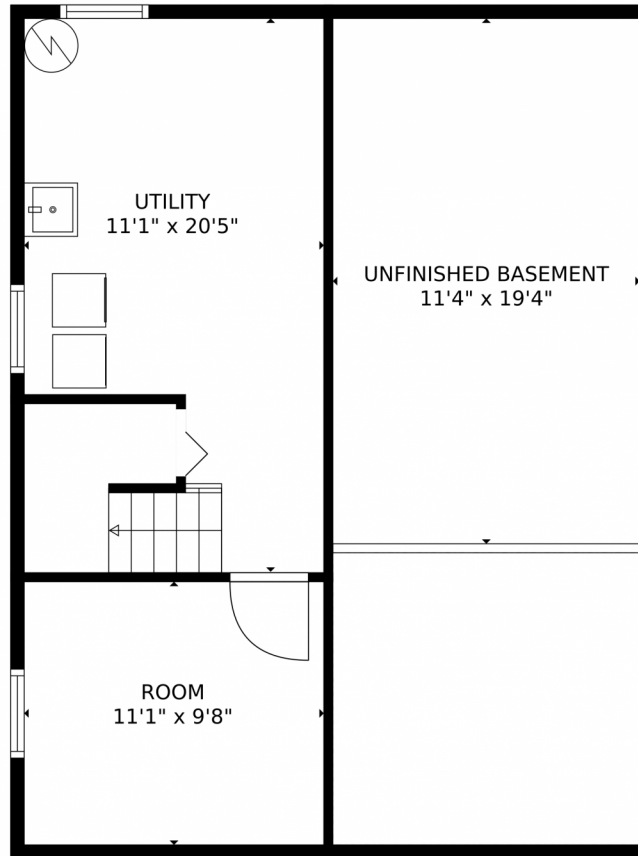


Scan code  
for more  
property  
details





1206 Josephine Street, Denver, CO 80206 – Lower Level



**TOTAL: 1733 sq. ft**  
Below Ground: 347 sq. ft, FLOOR 2: 694 sq. ft, FLOOR 3: 692 sq. ft  
EXCLUDED AREAS: UNFINISHED BASEMENT: 223 sq. ft, LOW CEILING: 122 sq. ft, PORCH: 128 sq. ft,  
DECK: 32 sq. ft, FIREPLACE: 6 sq. ft  
MEASUREMENTS CALCULATED BY V1Photos.com ARE DEEMED HIGHLY RELIABLE BUT NOT GUARANTEED.



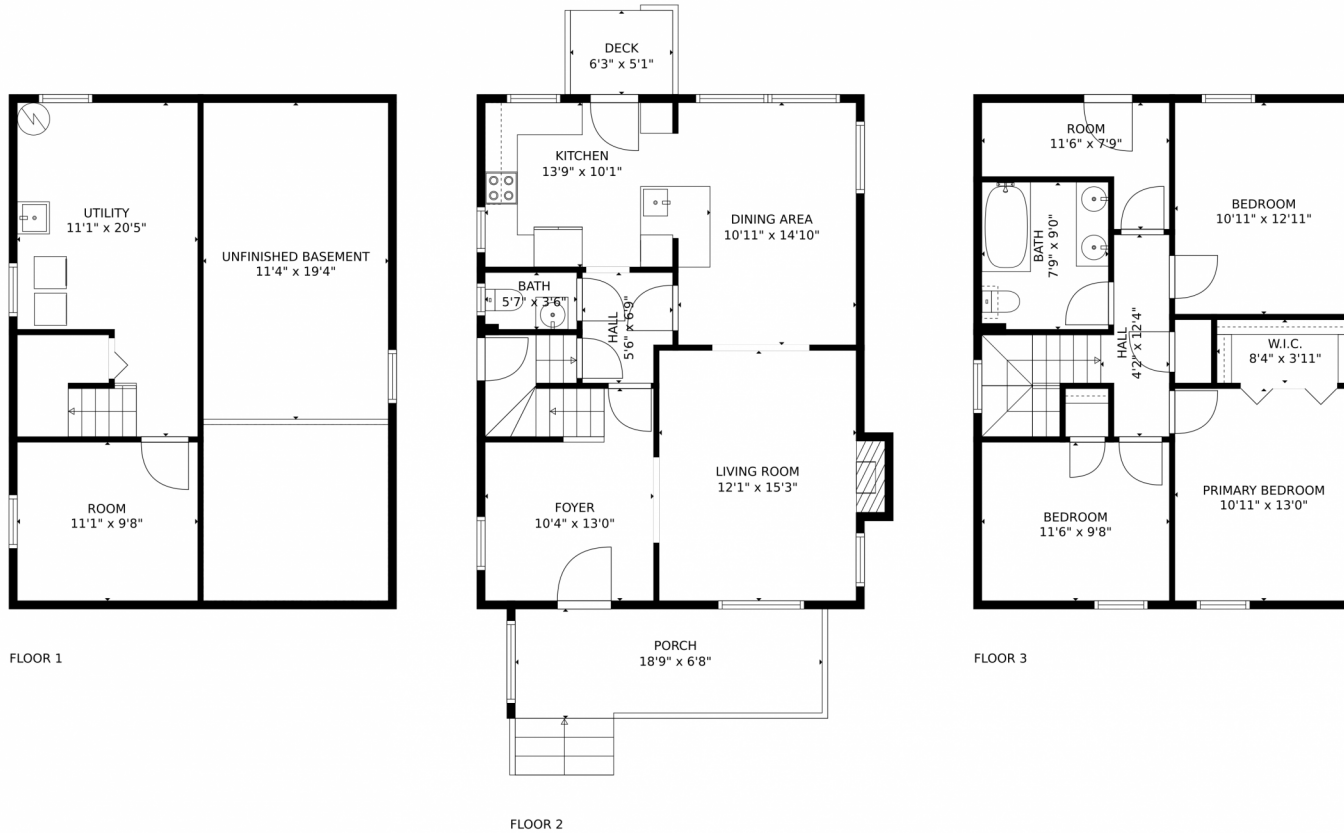
Disclaimer: Sizes and Dimensions are Approximate, Actual May Vary.



**Taylor Haas**  
303-665-7368  
taylorh@coloradorpm.com  
<https://www.coloradorpm.com/available-rental-properties-denver>



# 1206 Josephine Street, Denver, CO 80206 – All Levels



**TOTAL: 1733 sq. ft**  
Below Ground: 347 sq. ft, FLOOR 2: 694 sq. ft, FLOOR 3: 692 sq. ft  
EXCLUDED AREAS: UNFINISHED BASEMENT: 223 sq. ft, LOW CEILING: 122 sq. ft, PORCH: 128 sq. ft,  
DECK: 32 sq. ft, FIREPLACE: 6 sq. ft

MEASUREMENTS CALCULATED BY V1Photos.com ARE DEEMED HIGHLY RELIABLE BUT NOT GUARANTEED.



Disclaimer: Sizes and Dimensions are Approximate, Actual May Vary.



**Taylor Haas**

303-665-7368

taylorh@coloradorpm.com

<https://www.coloradorpm.com/available-rental-properties-denver>



Scan code  
for more  
property  
details

