

3191 Northwest 122nd Terrace  
Sunrise, FL 33323



Single Family



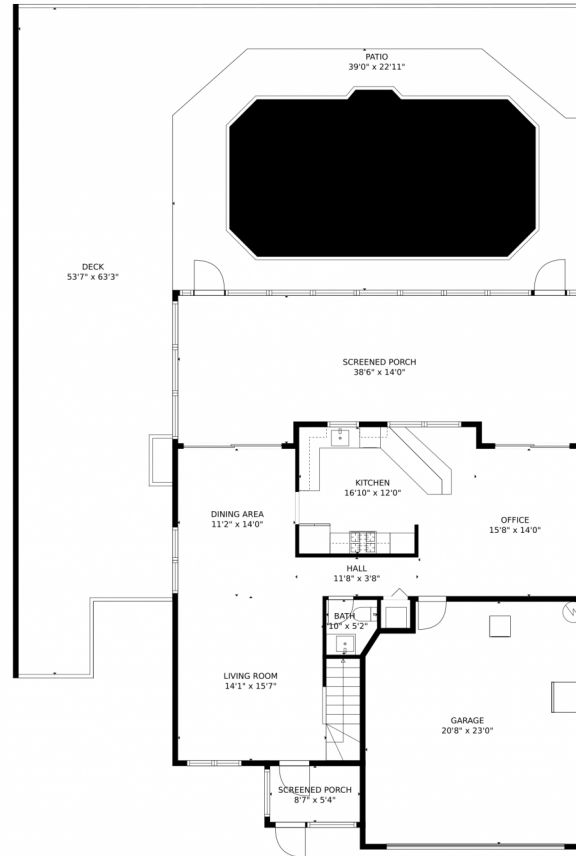
2286 SQFT



Carrie Pietrowski  
774-208-1112  
carrie@larosarealtyfortlauderdale.com



# 3191 Northwest 122nd Terrace, Sunrise, FL 33323 – 1st Floor



**TOTAL: 1844 sq. ft**  
FLOOR 1: 859 sq. ft, FLOOR 2: 985 sq. ft  
EXCLUDED AREAS: GARAGE: 460 sq. ft, SCREENED PORCH: 549 sq. ft, PATIO: 411 sq. ft,  
DECK: 1105 sq. ft, OPEN TO BELOW: 233 sq. ft, EMBEDDED WINDOW: 15 sq. ft  
MEASUREMENTS CALCULATED BY V1Photos.com ARE DEEMED HIGHLY RELIABLE BUT NOT GUARANTEED.

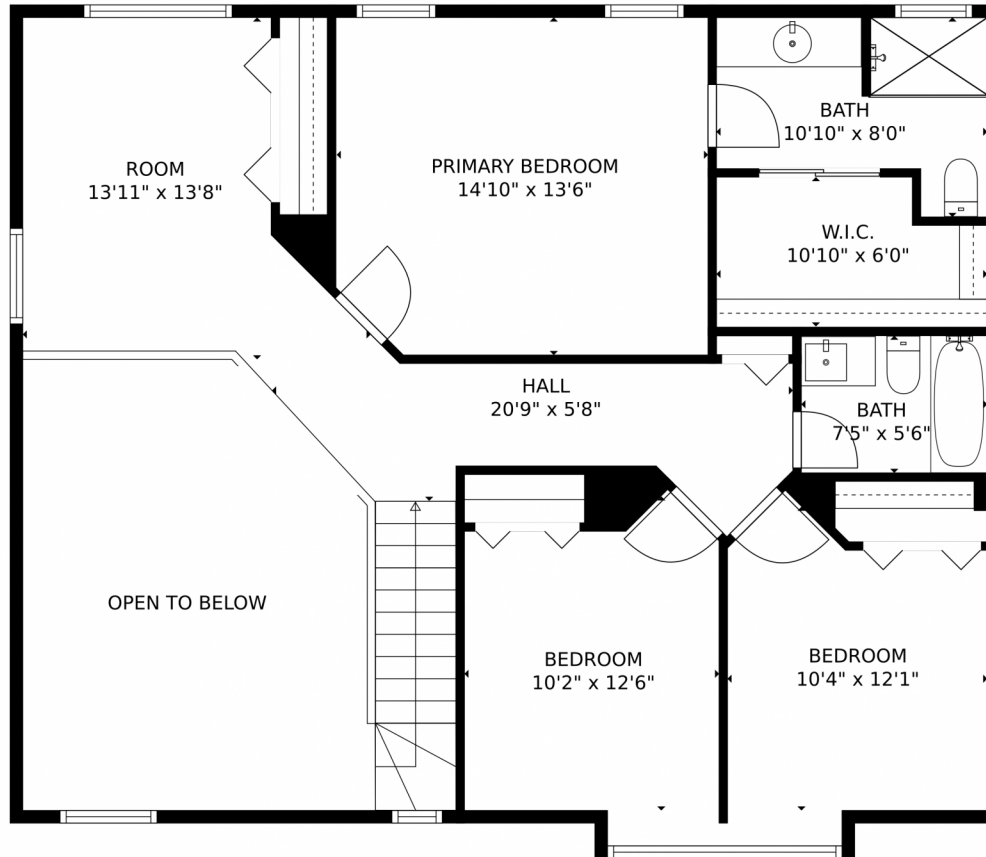


Disclaimer: Sizes and Dimensions are Approximate, Actual May Vary.

Carrie Pietrowski  
774-208-1112  
carrie@larosarealtyfortlauderdale.com



# 3191 Northwest 122nd Terrace, Sunrise, FL 33323 – 2nd Floor



**TOTAL: 1844 sq. ft**  
FLOOR 1: 859 sq. ft, FLOOR 2: 985 sq. ft  
EXCLUDED AREAS: GARAGE: 460 sq. ft, SCREENED PORCH: 549 sq. ft, PATIO: 411 sq. ft,  
DECK: 1105 sq. ft, OPEN TO BELOW: 233 sq. ft, EMBEDDED WINDOW: 15 sq. ft  
MEASUREMENTS CALCULATED BY V1Photos.com ARE DEEMED HIGHLY RELIABLE BUT NOT GUARANTEED.

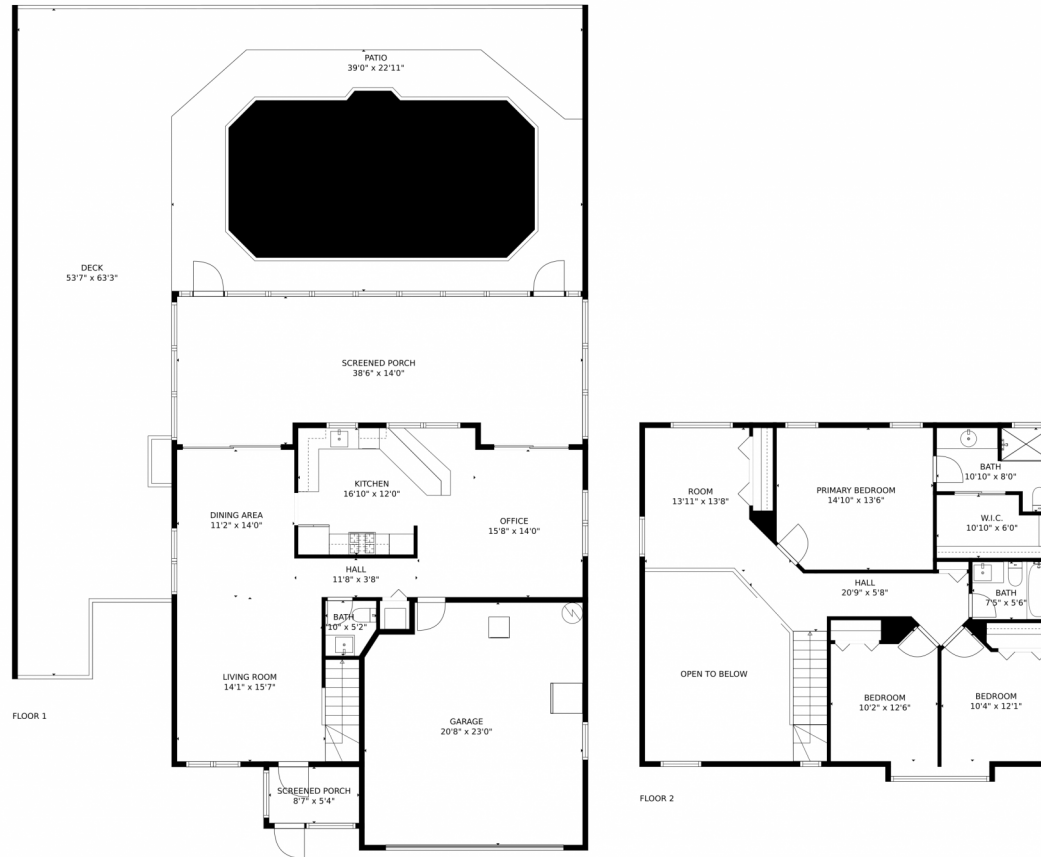


Disclaimer: Sizes and Dimensions are Approximate, Actual May Vary.

Carrie Pietrowski  
774-208-1112  
carrie@larosarealtyfortlauderdale.com



# 3191 Northwest 122nd Terrace, Sunrise, FL 33323 – All Floors



**TOTAL: 1844 sq. ft**  
FLOOR 1: 859 sq. ft, FLOOR 2: 985 sq. ft  
EXCLUDED AREAS: GARAGE: 460 sq. ft, SCREENED PORCH: 549 sq. ft, PATIO: 411 sq. ft,  
DECK: 1105 sq. ft, OPEN TO BELOW: 233 sq. ft, EMBEDDED WINDOW: 15 sq. ft  
MEASUREMENTS CALCULATED BY V1Photos.com ARE DEEMED HIGHLY RELIABLE BUT NOT GUARANTEED.



Disclaimer: Sizes and Dimensions are Approximate, Actual May Vary.

Carrie Pietrowski  
774-208-1112  
carrie@larosarealtyfortlauderdale.com

