

Single Family



1096 SQFT



3 Beds



1/1 Baths



2 Car



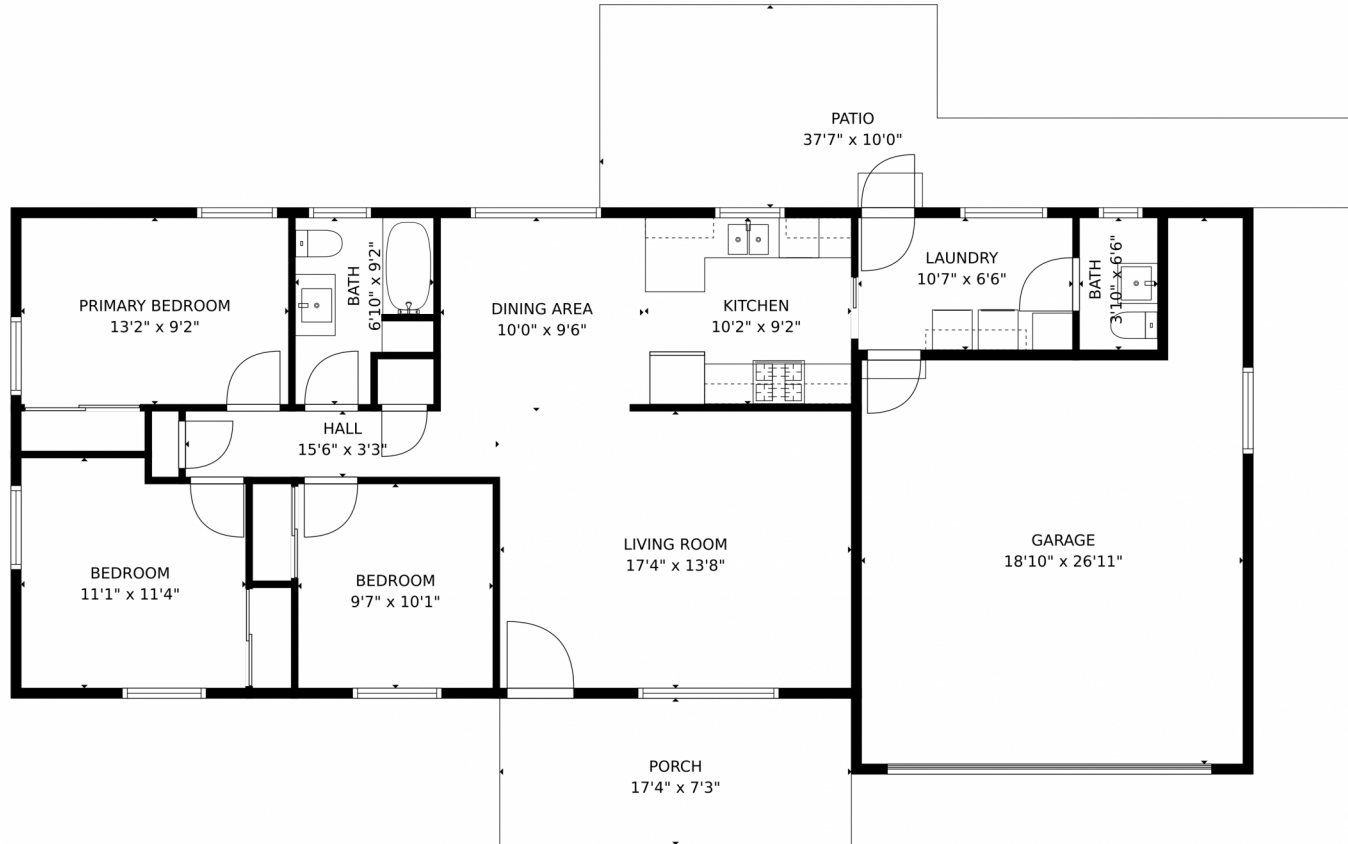
Alexis Foster
970-310-6999
alexisfoster@windermere.com



Scan code
for more
property
details



1815 North Estrella Avenue, Loveland, CO 80538 – Floor Plan



TOTAL: 1047 sq. ft
FLOOR 1: 1047 sq. ft
EXCLUDED AREAS: GARAGE: 401 sq. ft, PATIO: 259 sq. ft, PORCH: 125 sq. ft
MEASUREMENTS CALCULATED BY V1Photos.com ARE DEEMED HIGHLY RELIABLE BUT NOT GUARANTEED.



Disclaimer: Sizes and Dimensions are Approximate, Actual May Vary.



Alexis Foster
970-310-6999
alexisfoster@windermere.com

