



1443 South Ames Street  
Lakewood, CO 80232



1443 South Ames Street, Lakewood, CO 80232 - All Levels



Single Family 1654 SQFT



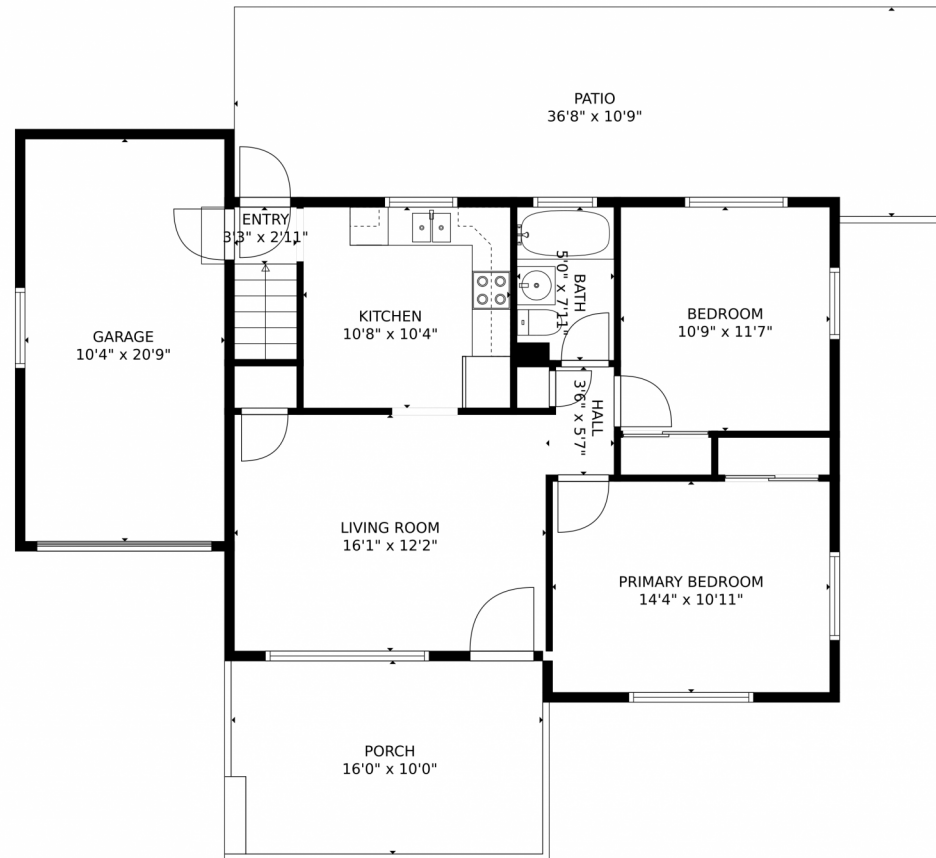
**Danielle Marcus**  
303-669-7974  
danielle@themarkusteam.com  
<https://www.themarkusteam.com>



Scan code  
for more  
property  
details



# 1443 South Ames Street, Lakewood, CO 80232 – Main Level



**TOTAL: 1468 sq. ft**  
Below Ground: 734 sq. ft, FLOOR 2: 734 sq. ft  
EXCLUDED AREAS: GARAGE: 214 sq. ft, PORCH: 157 sq. ft, PATIO: 366 sq. ft  
MEASUREMENTS CALCULATED BY V1Photos.com ARE DEEMED HIGHLY RELIABLE BUT NOT GUARANTEED.



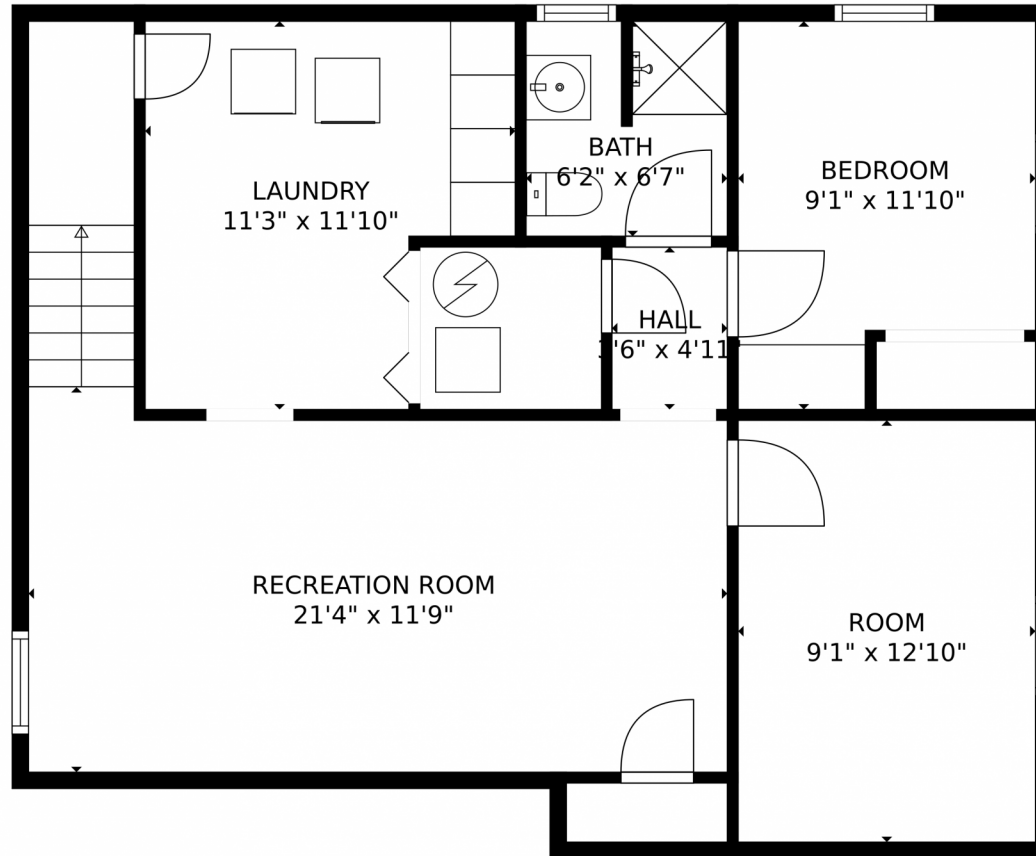
Disclaimer: Sizes and Dimensions are Approximate, Actual May Vary.



**Danielle Marcus**  
303-669-7974  
danielle@themarkusteam.com  
<https://www.themarkusteam.com>



1443 South Ames Street, Lakewood, CO 80232 – Lower Level



**TOTAL: 1468 sq. ft**  
Below Ground: 734 sq. ft, FLOOR 2: 734 sq. ft  
EXCLUDED AREAS: GARAGE: 214 sq. ft, PORCH: 157 sq. ft, PATIO: 366 sq. ft  
MEASUREMENTS CALCULATED BY V1Photos.com ARE DEEMED HIGHLY RELIABLE BUT NOT GUARANTEED.



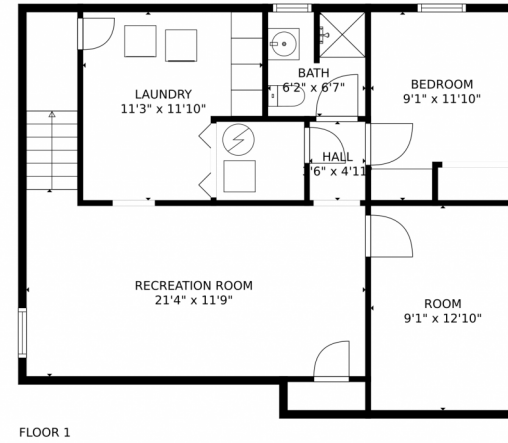
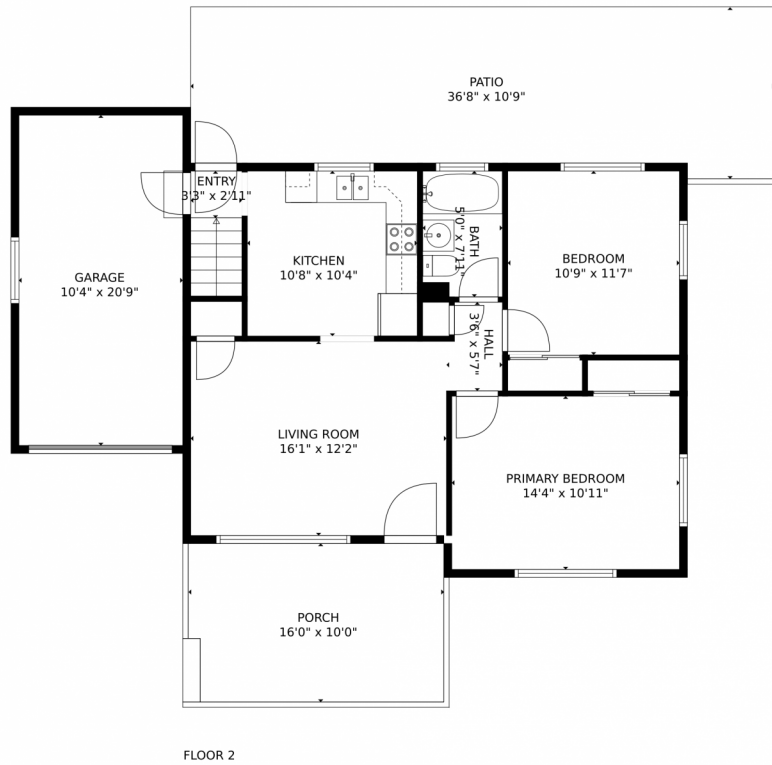
Disclaimer: Sizes and Dimensions are Approximate, Actual May Vary.



**Danielle Marcus**  
303-669-7974  
danielle@themarkusteam.com  
<https://www.themarkusteam.com>



# 1443 South Ames Street, Lakewood, CO 80232 – All Levels



**TOTAL: 1468 sq. ft**  
Below Ground: 734 sq. ft, FLOOR 2: 734 sq. ft  
EXCLUDED AREAS: GARAGE: 214 sq. ft, PORCH: 157 sq. ft, PATIO: 366 sq. ft  
MEASUREMENTS CALCULATED BY V1Photos.com ARE DEEMED HIGHLY RELIABLE BUT NOT GUARANTEED.



Disclaimer: Sizes and Dimensions are Approximate, Actual May Vary.



**Danielle Marcus**  
303-669-7974  
danielle@themarkusteam.com  
<https://www.themarkusteam.com>

