



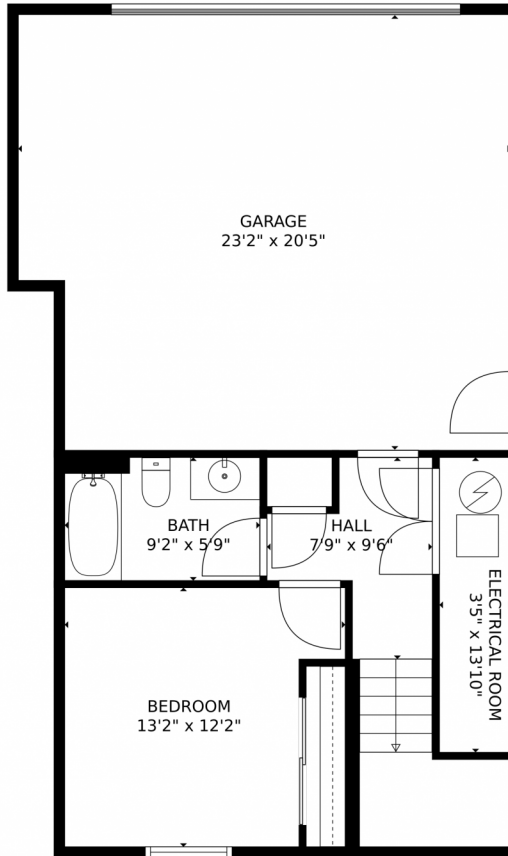
 Single Family  1327 SQFT



**Taylor Haas**  
303-665-7368  
taylorh@coloradorpm.com  
<https://www.coloradorpm.com/available-rental-properties-denver>



6872 Lily Mountain Lane, Colorado Springs, CO 80923 — Lower Level



**TOTAL: 1202 sq. ft**  
Below Ground: 337 sq. ft, FLOOR 2: 865 sq. ft  
EXCLUDED AREAS: ELECTRICAL ROOM: 47 sq. ft, GARAGE: 457 sq. ft, BALCONY: 62 sq. ft,  
PORCH: 34 sq. ft

MEASUREMENTS CALCULATED BY V1Photos.com ARE DEEMED HIGHLY RELIABLE BUT NOT GUARANTEED.



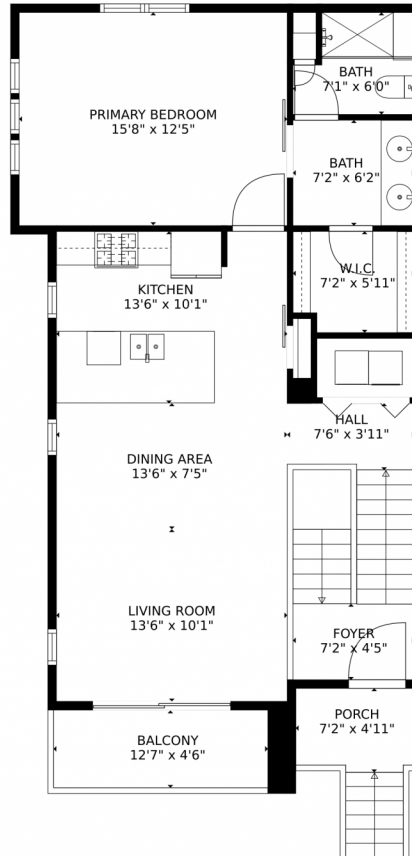
Disclaimer: Sizes and Dimensions are Approximate, Actual May Vary.



**Taylor Haas**  
303-665-7368  
taylorh@coloradorpm.com  
<https://www.coloradorpm.com/available-rental-properties-denver>



# 6872 Lily Mountain Lane, Colorado Springs, CO 80923 – Main Level



**TOTAL: 1202 sq. ft**  
Below Ground: 337 sq. ft, FLOOR 2: 865 sq. ft  
EXCLUDED AREAS: ELECTRICAL ROOM: 47 sq. ft, GARAGE: 457 sq. ft, BALCONY: 62 sq. ft,  
PORCH: 34 sq. ft

MEASUREMENTS CALCULATED BY V1Photos.com ARE DEEMED HIGHLY RELIABLE BUT NOT GUARANTEED.



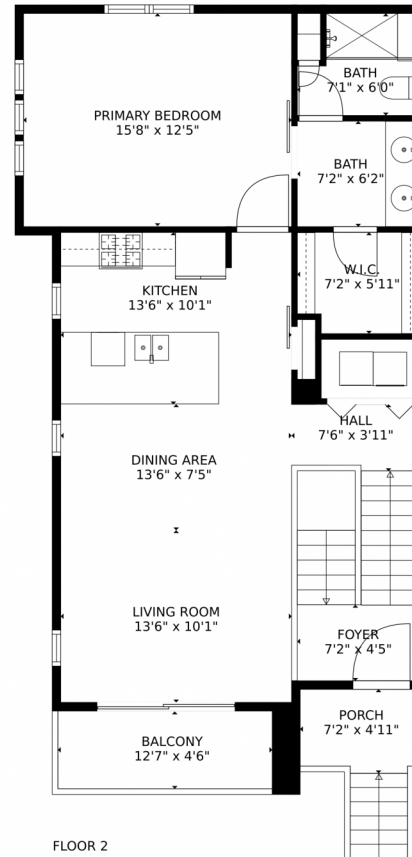
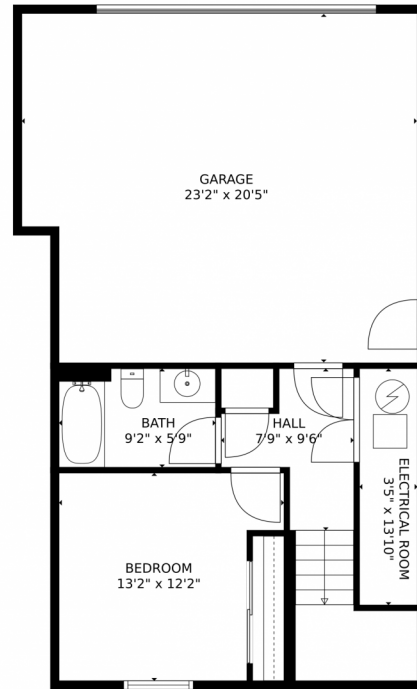
Disclaimer: Sizes and Dimensions are Approximate, Actual May Vary.



**Taylor Haas**  
303-665-7368  
taylorh@coloradorpm.com  
<https://www.coloradorpm.com/available-rental-properties-denver>



# 6872 Lily Mountain Lane, Colorado Springs, CO 80923 – All Levels



**TOTAL: 1202 sq. ft**  
Below Ground: 337 sq. ft, FLOOR 2: 865 sq. ft  
EXCLUDED AREAS: ELECTRICAL ROOM: 47 sq. ft, GARAGE: 457 sq. ft, BALCONY: 62 sq. ft,  
PORCH: 34 sq. ft

MEASUREMENTS CALCULATED BY V1Photos.com ARE DEEMED HIGHLY RELIABLE BUT NOT GUARANTEED.



Disclaimer: Sizes and Dimensions are Approximate, Actual May Vary.



**Taylor Haas**

303-665-7368

taylorh@coloradorpm.com

<https://www.coloradorpm.com/available-rental-properties-denver>



Scan code  
for more  
property  
details

