



7765 W 90th Drive  
 Westminster, CO 80021  
 COMMUNITY: Wildridge Townhomes

MLS # 5230799  
 PRICE \$465,000



Townhouse



2001 SQFT



2 Beds



2 Baths



2 Car



0.05 Acre

## PROPERTY DETAILS

Welcome to 7765 W 90th Drive, a charming ranch-style townhouse in Westminister's Wildridge Townhomes community. This home offers main level living with a thoughtful layout, vaulted ceilings, and plenty of natural light. The primary bedroom has a walk-in closet and en suite bathroom, while a secondary bedroom and full bathroom provide privacy for guests. The living room features a cozy fireplace, and the kitchen has ample cabinetry and countertop space. The laundry is conveniently located on the main level. The unfinished basement offers customization options. There is a 2-car attached garage for parking and storage. Recent updates include new carpet and luxury vinyl flooring. Enjoy mountain views from the front patio. This townhome community offers modern amenities and a friendly neighborhood atmosphere. Don't miss out on this opportunity to call it home.



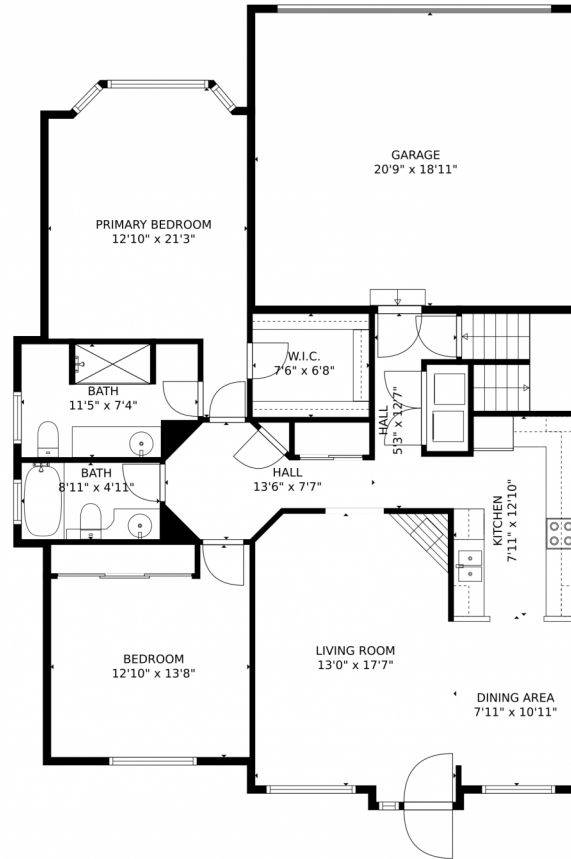
**Sarah Prystupa**  
 303-489-9677  
 sarah@sarahprystupa.com



Scan code  
 for more  
 property  
 details



# 7765 W 90th Drive, Westminster, CO 80021 — Main Level



**TOTAL: 1215 sq. ft**  
Below Ground: 0 sq. ft, FLOOR 2: 1215 sq. ft  
EXCLUDED AREAS: BASEMENT: 618 sq. ft, GARAGE: 392 sq. ft  
MEASUREMENTS CALCULATED BY V1Photos.com ARE DEEMED HIGHLY RELIABLE BUT NOT GUARANTEED.

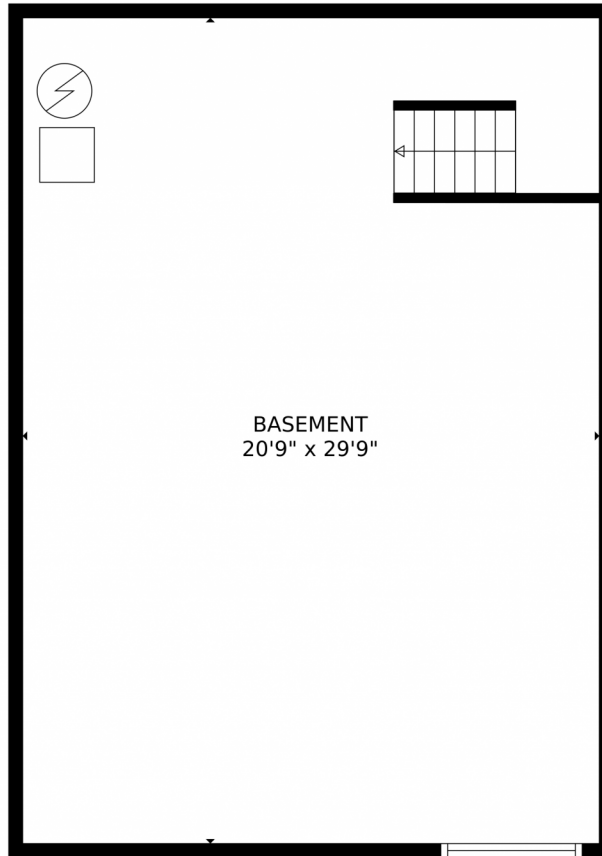


Disclaimer: Sizes and Dimensions are Approximate, Actual May Vary.



**Sarah Prystupa**  
303-489-9677  
sarah@sarahprystupa.com





**TOTAL: 1215 sq. ft**  
Below Ground: 0 sq. ft, FLOOR 2: 1215 sq. ft  
EXCLUDED AREAS: BASEMENT: 618 sq. ft, GARAGE: 392 sq. ft  
MEASUREMENTS CALCULATED BY V1Photos.com ARE DEEMED HIGHLY RELIABLE BUT NOT GUARANTEED.



Disclaimer: Sizes and Dimensions are Approximate, Actual May Vary.

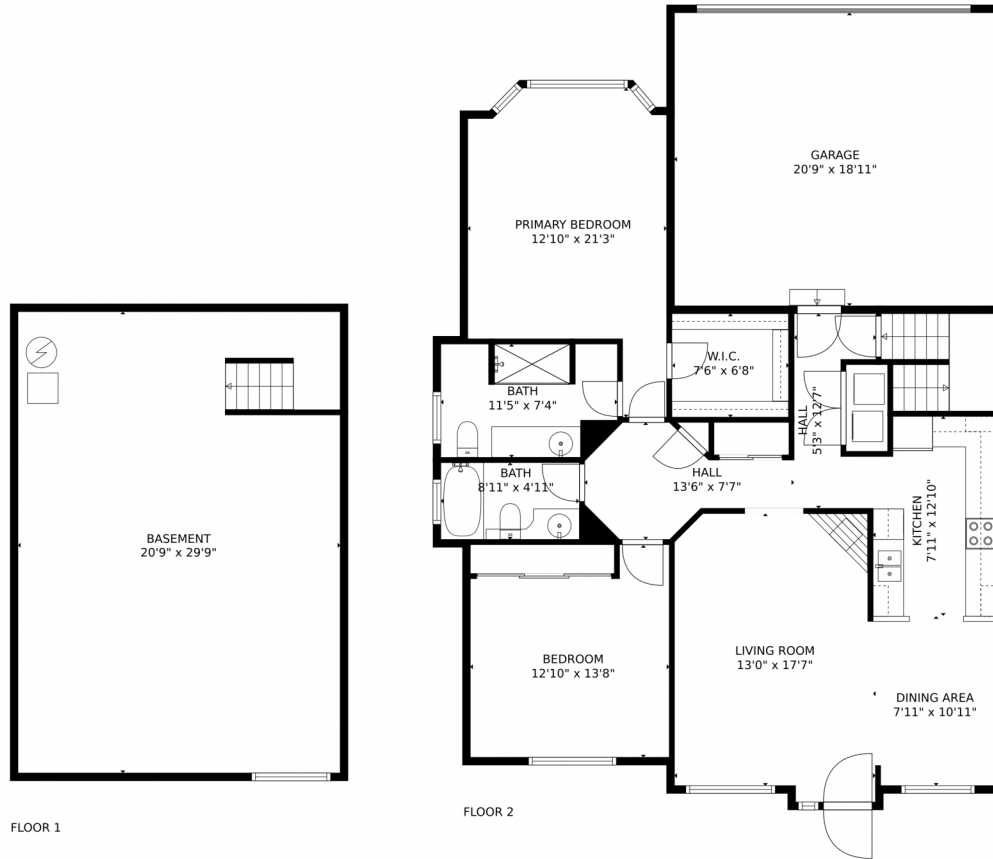


**Sarah Prystupa**  
303-489-9677  
sarah@sarahprystupa.com





7765 W 90th Drive, Westminster, CO 80021 – All Levels



FLOOR 1

FLOOR 2

**TOTAL: 1215 sq. ft**  
Below Ground: 0 sq. ft, FLOOR 2: 1215 sq. ft  
EXCLUDED AREAS: BASEMENT: 618 sq. ft, GARAGE: 392 sq. ft

MEASUREMENTS CALCULATED BY V1Photos.com ARE DEEMED HIGHLY RELIABLE BUT NOT GUARANTEED.



Disclaimer: Sizes and Dimensions are Approximate, Actual May Vary.



Sarah Prystupa  
303-489-9677  
sarah@sarahprystupa.com

