

96 Newport Street  
Denver, CO 80230  
COMMUNITY: Boulevard One in Lowry



Single Family



3829 SQFT



2 Beds



2/1 Baths



1 Car



0.09 Acre



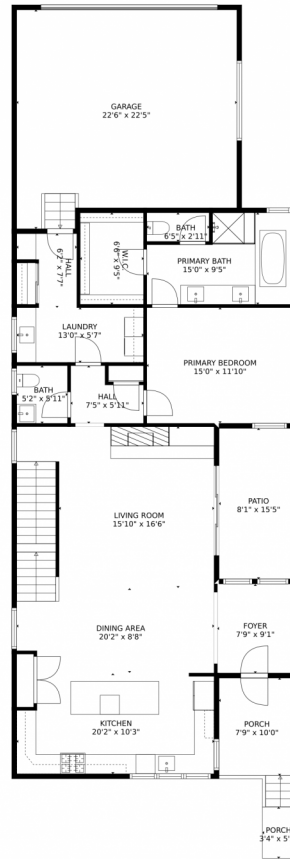
**Mark W. Hunter**  
720-840-7791  
markhunterhomes@gmail.com  
<https://www.MarkHunterHomes.com/>



Scan code  
for more  
property  
details



# 96 Newport Street, Denver, CO 80230 – Main Level



**TOTAL: 2042 sq. ft**  
Below Ground: 0 sq. ft, FLOOR 2: 1395 sq. ft, FLOOR 3: 647 sq. ft  
EXCLUDED AREAS: UNFINISHED BASEMENT: 1394 sq. ft, PORCH: 94 sq. ft, PATIO: 125 sq. ft,  
GARAGE: 469 sq. ft

MEASUREMENTS CALCULATED BY V1Photos.com ARE DEEMED HIGHLY RELIABLE BUT NOT GUARANTEED.



Disclaimer: Sizes and Dimensions are Approximate, Actual May Vary.



**Mark W. Hunter**

720-840-7791

markhunterhomes@gmail.com

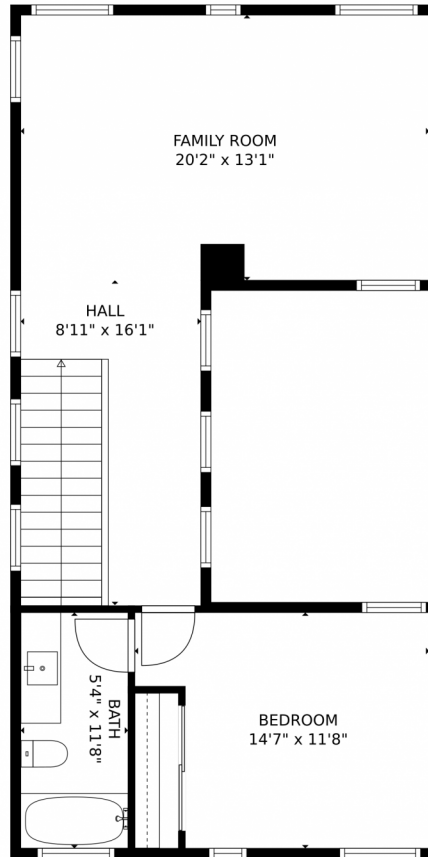
<https://www.MarkHunterHomes.com/>



Scan code  
for more  
property  
details



# 96 Newport Street, Denver, CO 80230 – Upper Level



**TOTAL: 2041 sq. ft**  
Below Ground: 0 sq. ft, FLOOR 2: 1394 sq. ft, FLOOR 3: 647 sq. ft  
EXCLUDED AREAS: UNFINISHED BASEMENT: 1394 sq. ft, PORCH: 94 sq. ft, GARAGE: 469 sq. ft  
MEASUREMENTS CALCULATED BY V1Photos.com ARE DEEMED HIGHLY RELIABLE BUT NOT GUARANTEED.



Disclaimer: Sizes and Dimensions are Approximate, Actual May Vary.



**Mark W. Hunter**

720-840-7791

markhunterhomes@gmail.com

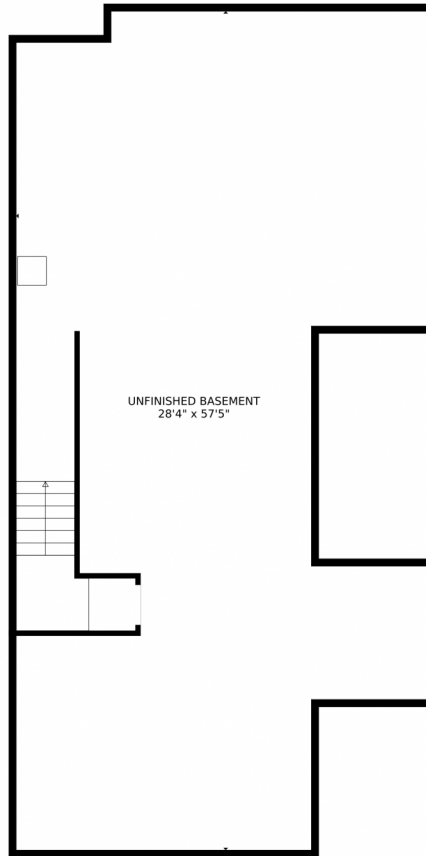
<https://www.MarkHunterHomes.com/>



Scan code  
for more  
property  
details



# 96 Newport Street, Denver, CO 80230 — Lower Level



**TOTAL: 2041 sq. ft**  
Below Ground: 0 sq. ft, FLOOR 2: 1394 sq. ft, FLOOR 3: 647 sq. ft  
EXCLUDED AREAS: UNFINISHED BASEMENT: 1394 sq. ft, PORCH: 94 sq. ft, GARAGE: 469 sq. ft  
MEASUREMENTS CALCULATED BY V1Photos.com ARE DEEMED HIGHLY RELIABLE BUT NOT GUARANTEED.



Disclaimer: Sizes and Dimensions are Approximate, Actual May Vary.



**Mark W. Hunter**

720-840-7791

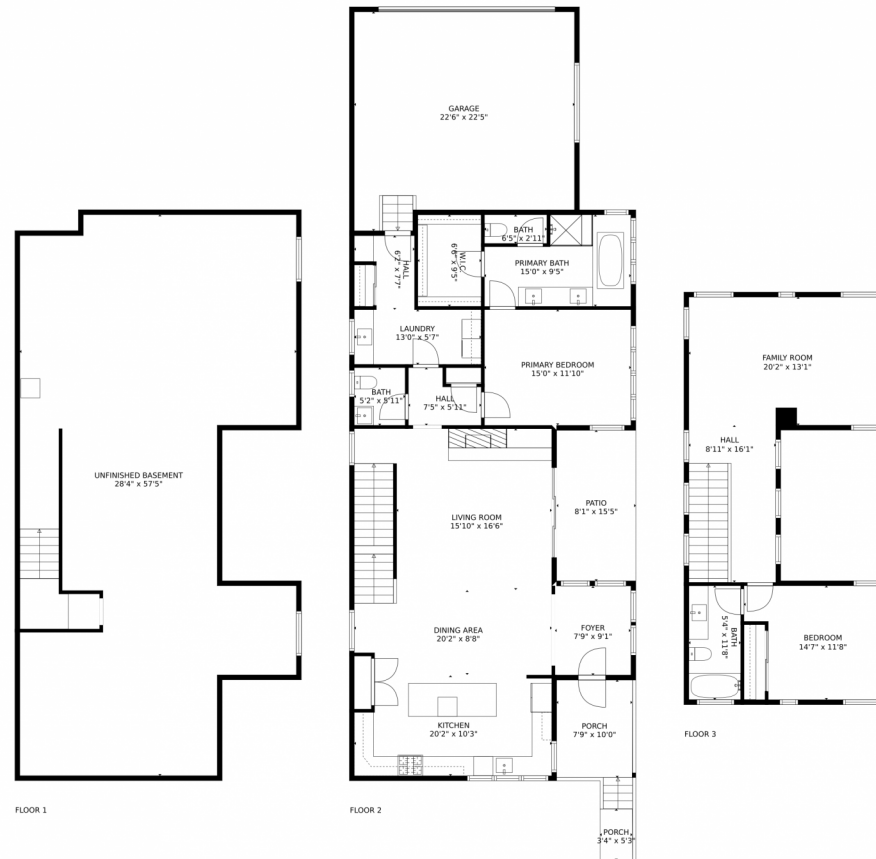
markhunterhomes@gmail.com

<https://www.MarkHunterHomes.com/>



Scan code  
for more  
property  
details

# 96 Newport Street, Denver, CO 80230 – All Levels



**TOTAL: 2042 sq. ft**  
Below Ground: 0 sq. ft, FLOOR 2: 1395 sq. ft, FLOOR 3: 647 sq. ft  
EXCLUDED AREAS: UNFINISHED BASEMENT: 1394 sq. ft, PORCH: 94 sq. ft, PATIO: 125 sq. ft, GARAGE: 469 sq. ft

MEASUREMENTS CALCULATED BY V1Photos.com ARE DEEMED HIGHLY RELIABLE BUT NOT GUARANTEED.



Disclaimer: Sizes and Dimensions are Approximate, Actual May Vary.



**Mark W. Hunter**

720-840-7791

markhunterhomes@gmail.com

<https://www.MarkHunterHomes.com/>



Scan code  
for more  
property  
details

