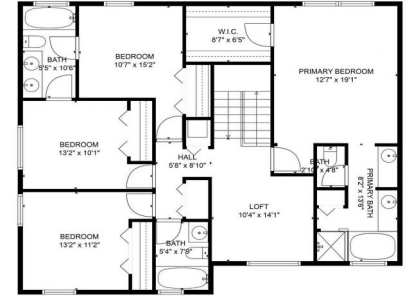




5012 Victoria Circle  
 West Palm Beach, FL 33409  
**COMMUNITY:** BRIGER PARS B, E AND F

**MLS #** R10957913  
**PRICE** \$699,500



Single Family



3034 SQFT



4 Beds



3/1 Baths



2 Car



0.17 Acre

## PROPERTY DETAILS

Looking for a home near Palm Beach's attractions? This spacious home is in a premier gated community. Perfect for entertaining, it has a heated pool and oversized backyard. The main level has a formal living and dining room, open kitchen, and family room. Upstairs are 4 bedrooms, 3 baths, and a loft. Community amenities include pools, playground, and courts. Come see it and imagine the family memories!

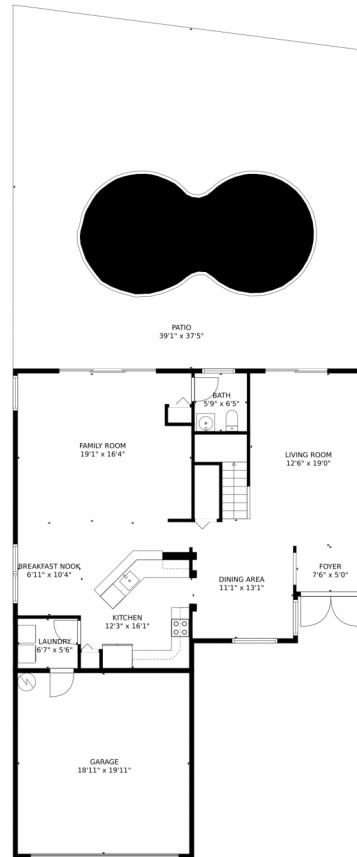


**Lori Hatch**  
 561-628-3887  
 lori@ebstonerealty.com



Scan code  
 for more  
 property  
 details





**TOTAL: 2308 sq. ft**  
FLOOR 1: 1134 sq. ft, FLOOR 2: 1174 sq. ft  
EXCLUDED AREAS: GARAGE: 376 sq. ft, PATIO: 1192 sq. ft

MEASUREMENTS CALCULATED BY V1Photos.com ARE DEEMED HIGHLY RELIABLE BUT NOT GUARANTEED.

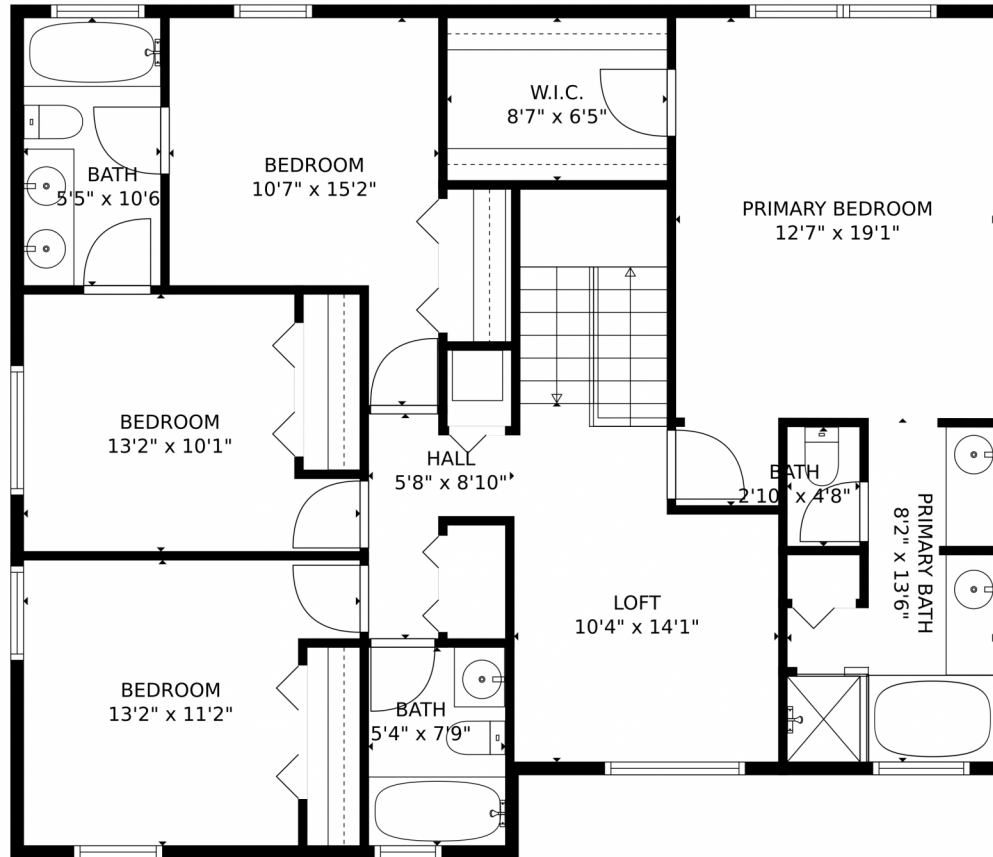


Disclaimer: Sizes and Dimensions are Approximate, Actual May Vary.



**Lori Hatch**  
561-628-3887  
lori@ebstonerealty.com





**TOTAL: 2308 sq. ft**  
FLOOR 1: 1134 sq. ft, FLOOR 2: 1174 sq. ft  
EXCLUDED AREAS: GARAGE: 376 sq. ft, PATIO: 1192 sq. ft  
MEASUREMENTS CALCULATED BY V1Photos.com ARE DEEMED HIGHLY RELIABLE BUT NOT GUARANTEED.



Disclaimer: Sizes and Dimensions are Approximate, Actual May Vary.



**Lori Hatch**  
561-628-3887  
lori@ebstonerealty.com

