

411 Lafayette Street
Denver, CO 80218
COMMUNITY: Denver



Single Family



1800 SQFT



3 Beds



2/1 Baths



2 Car



0.14 Acre



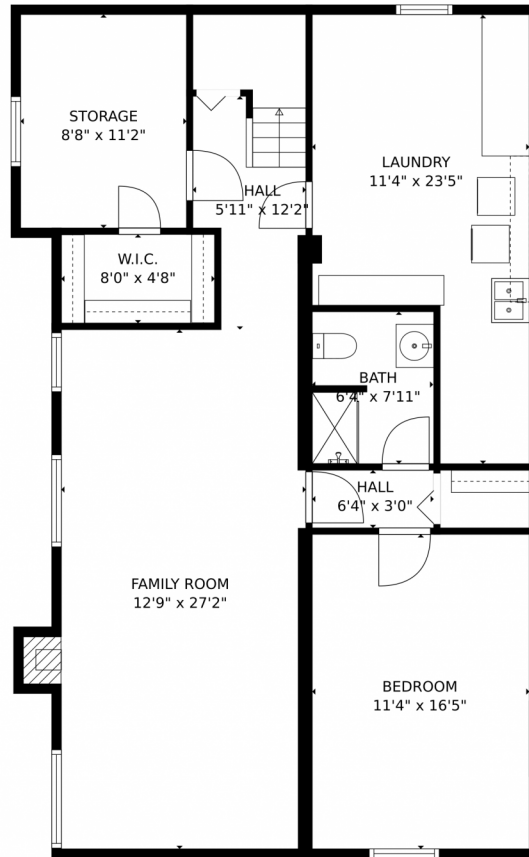
David Irving
303-525-6222
wdsi@msn.com



Scan code
for more
property
details



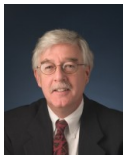
411 Lafayette Street, Denver, CO 80218 – Lower Level



TOTAL: 2335 sq. ft
Below Ground: 995 sq. ft, FLOOR 2: 1340 sq. ft
EXCLUDED AREAS: STORAGE: 97 sq. ft, FIREPLACE: 8 sq. ft, GARAGE: 454 sq. ft,
PORCH: 225 sq. ft, BALCONY: 24 sq. ft, PATIO: 1672 sq. ft
MEASUREMENTS CALCULATED BY V1Photos.com ARE DEEMED HIGHLY RELIABLE BUT NOT GUARANTEED.



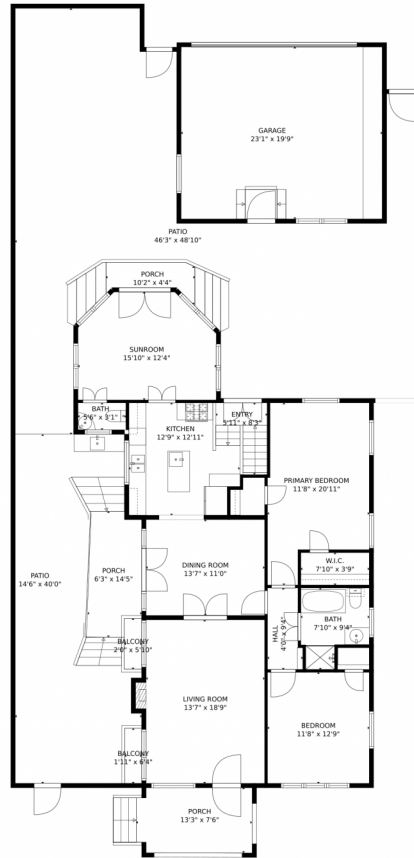
Disclaimer: Sizes and Dimensions are Approximate, Actual May Vary.



David Irving
303-525-6222
wdsi@msn.com



411 Lafayette Street, Denver, CO 80218 – Main Level



TOTAL: 2335 sq. ft

Below Ground: 995 sq. ft, FLOOR 2: 1340 sq. ft

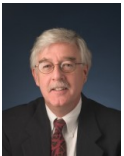
EXCLUDED AREAS: STORAGE: 97 sq. ft, FIREPLACE: 8 sq. ft, GARAGE: 454 sq. ft,

PORCH: 225 sq. ft, BALCONY: 24 sq. ft, PATIO: 1672 sq. ft

MEASUREMENTS CALCULATED BY V1Photos.COM ARE DEEMED HIGHLY RELIABLE BUT NOT GUARANTEED.



Disclaimer: Sizes and Dimensions are Approximate, Actual May Vary.



David Irving
303-525-6222
wdsi@msn.com



411 Lafayette Street, Denver, CO 80218 — All Levels

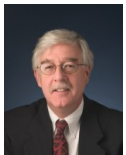


TOTAL: 2335 sq. ft
Below Ground: 995 sq. ft, FLOOR 2: 1340 sq. ft
EXCLUDED AREAS: STORAGE: 97 sq. ft, FIREPLACE: 8 sq. ft, GARAGE: 454 sq. ft,
PORCH: 225 sq. ft, BALCONY: 24 sq. ft, PATIO: 1672 sq. ft

MEASUREMENTS CALCULATED BY V1Photos.com ARE DEEMED HIGHLY RELIABLE BUT NOT GUARANTEED.



Disclaimer: Sizes and Dimensions are Approximate, Actual May Vary.



David Irving
303-525-6222
wdsi@msn.com

