

19805 East 58th Place  
 Aurora, CO 80019  
 COMMUNITY: Singletree At Dia



Single Family



1852 SQFT



3 Beds



2/1 Baths



2 Car



0.15 Acre



**Jorge Armstrong**

303-371-6200

jorge.armstrong@kw.com

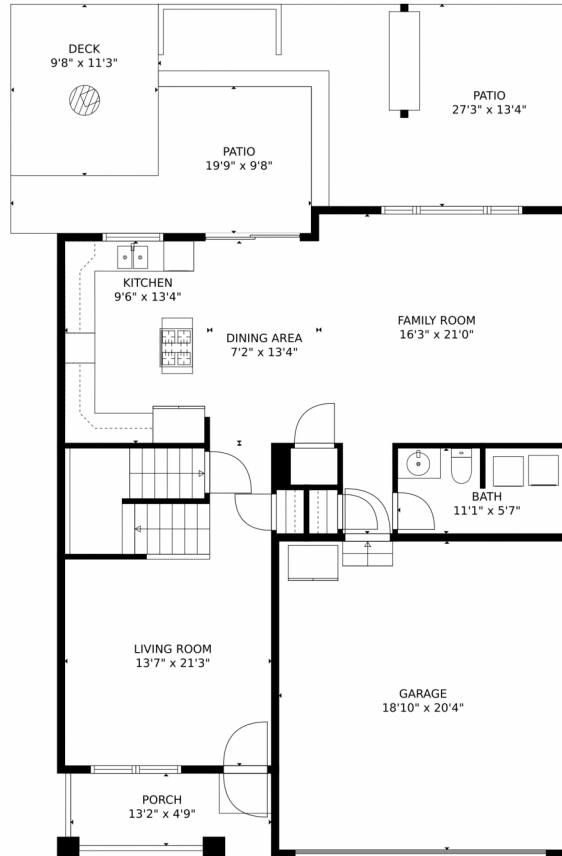
<https://www.milehighcitylivinggroup.com/>



Scan code  
 for more  
 property  
 details



# 19805 East 58th Place, Aurora, CO 80019 – Main Level



**TOTAL: 1843 sq. ft**  
Below Ground: 0 sq. ft, FLOOR 2: 870 sq. ft, FLOOR 3: 973 sq. ft  
EXCLUDED AREAS: UNFINISHED BASEMENT: 515 sq. ft, GARAGE: 383 sq. ft, PORCH: 64 sq. ft,  
PATIO: 418 sq. ft, DECK: 109 sq. ft

MEASUREMENTS CALCULATED BY V1Photos.com ARE DEEMED HIGHLY RELIABLE BUT NOT GUARANTEED.



Disclaimer: Sizes and Dimensions are Approximate, Actual May Vary.



**Jorge Armstrong**

303-371-6200

jorge.armstrong@kw.com

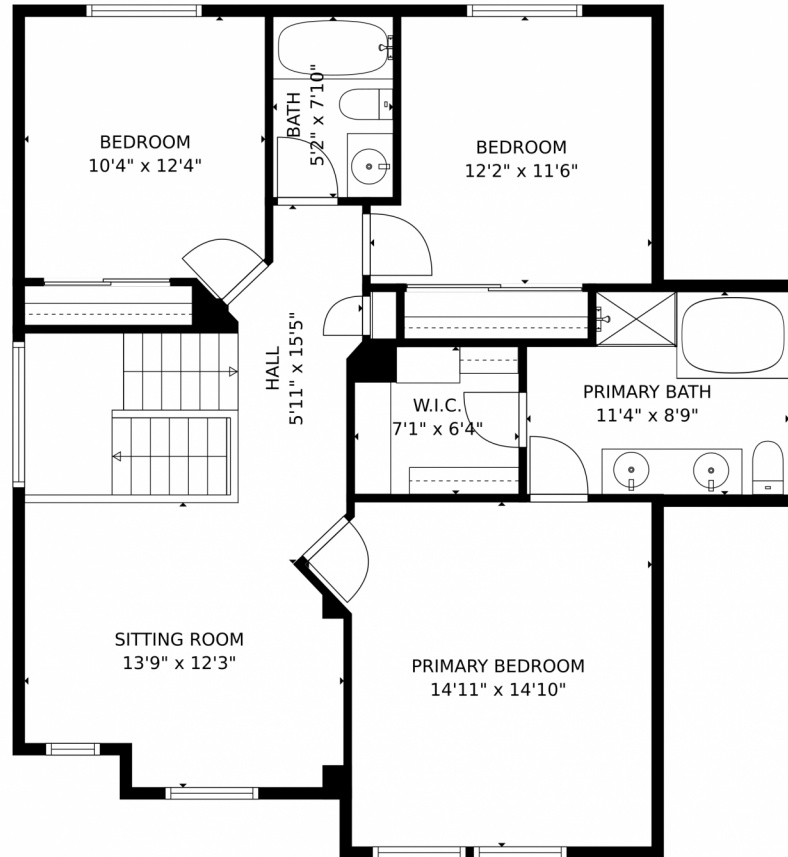
<https://www.milehighcitylivinggroup.com/>



Scan code  
for more  
property  
details



19805 East 58th Place, Aurora, CO 80019 – Upper Level



**TOTAL: 1843 sq. ft**  
Below Ground: 0 sq. ft, FLOOR 2: 870 sq. ft, FLOOR 3: 973 sq. ft  
EXCLUDED AREAS: UNFINISHED BASEMENT: 515 sq. ft, GARAGE: 383 sq. ft, PORCH: 64 sq. ft,  
PATIO: 418 sq. ft, DECK: 109 sq. ft

MEASUREMENTS CALCULATED BY V1Photos.com ARE DEEMED HIGHLY RELIABLE BUT NOT GUARANTEED.



Disclaimer: Sizes and Dimensions are Approximate, Actual May Vary.



**Jorge Armstrong**

303-371-6200

jorge.armstrong@kw.com

<https://www.milehighcitylivinggroup.com/>

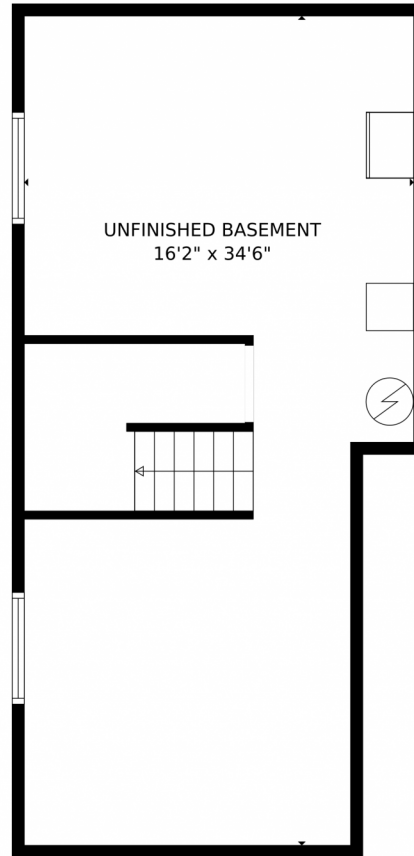


Scan code  
for more  
property  
details





19805 East 58th Place, Aurora, CO 80019 – Lower Level



**TOTAL: 1843 sq. ft**  
Below Ground: 0 sq. ft, FLOOR 2: 870 sq. ft, FLOOR 3: 973 sq. ft  
EXCLUDED AREAS: UNFINISHED BASEMENT: 515 sq. ft, GARAGE: 383 sq. ft, PORCH: 64 sq. ft,  
PATIO: 418 sq. ft, DECK: 109 sq. ft

MEASUREMENTS CALCULATED BY V1Photos.com ARE DEEMED HIGHLY RELIABLE BUT NOT GUARANTEED.



Disclaimer: Sizes and Dimensions are Approximate, Actual May Vary.



**Jorge Armstrong**

303-371-6200

[jorge.armstrong@kw.com](mailto:jorge.armstrong@kw.com)

<https://www.milehighcitylivinggroup.com/>



Scan code  
for more  
property  
details



# 19805 East 58th Place, Aurora, CO 80019 – All Levels



**TOTAL: 1843 sq. ft**  
Below Ground: 0 sq. ft, FLOOR 2: 870 sq. ft, FLOOR 3: 973 sq. ft  
EXCLUDED AREAS: UNFINISHED BASEMENT: 515 sq. ft, GARAGE: 383 sq. ft, PORCH: 64 sq. ft,  
PATIO: 418 sq. ft, DECK: 109 sq. ft

MEASUREMENTS CALCULATED BY V1Photos.com ARE DEEMED HIGHLY RELIABLE BUT NOT GUARANTEED.



Disclaimer: Sizes and Dimensions are Approximate, Actual May Vary.



**Jorge Armstrong**

303-371-6200

jorge.armstrong@kw.com

<https://www.milehighcitylivinggroup.com/>



Scan code  
for more  
property  
details

