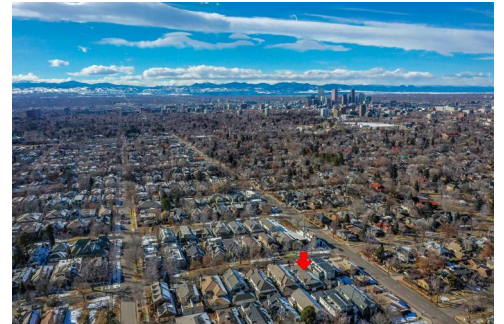
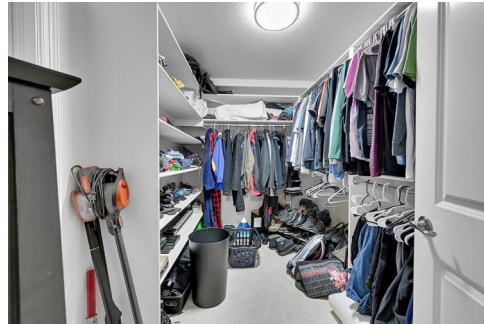




538 Madison Street
 Denver, CO 80206
 COMMUNITY: Cherry Creek North

MLS # 9595583
 PRICE \$1,900,000



Townhouse 3441 SQFT 3 Beds 3/1 Baths 2 Car 0.07 Acre

PROPERTY DETAILS

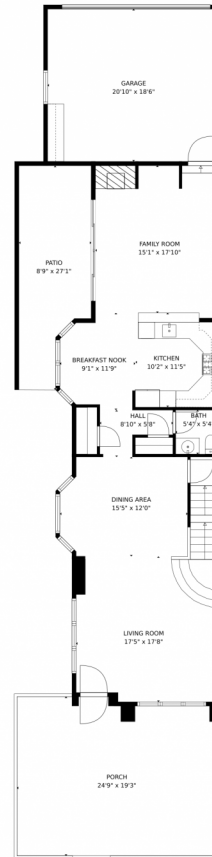
Experience modern elegance in this beautifully remodeled residence in Cherry Creek North. Walk to restaurants and shops. Upscale upgrades and designer finishes throughout including wool carpet, Ironworks stair railing, refinished hardwood floors, custom paint, designer light fixtures, quartz countertops, upgraded bathrooms, new landscaping, and more. 3 bedrooms, 3.5 baths, 2 car garage, 2 outdoor patios. Spacious primary retreat with cathedral ceilings, walk-in closet, and elegant bathroom. Move-in ready with no HOA or special taxing district.



Linda Nehls
 303-668-7670
 linda@lindanehls.com



538 Madison Street, Denver, CO 80206 – Main Level



TOTAL: 3234 sq. ft
Below Ground: 948 sq. ft, FLOOR 2: 1109 sq. ft, FLOOR 3: 1177 sq. ft
EXCLUDED AREAS: ELECTRICAL ROOM: 57 sq. ft, STORAGE: 74 sq. ft, GARAGE: 385 sq. ft,
PATIO: 204 sq. ft, PORCH: 461 sq. ft

MEASUREMENTS CALCULATED BY V1Photos.com ARE DEEMED HIGHLY RELIABLE BUT NOT GUARANTEED.



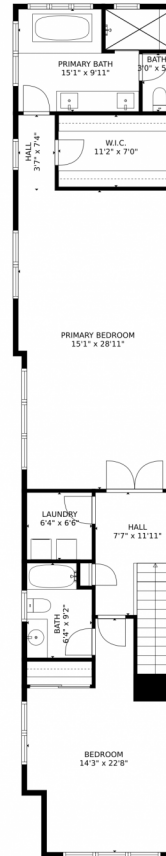
Disclaimer: Sizes and Dimensions are Approximate, Actual May Vary.



Linda Nehls
303-668-7670
linda@lindanehls.com



538 Madison Street, Denver, CO 80206 – Second Level



TOTAL: 3234 sq. ft

Below Ground: 948 sq. ft, FLOOR 2: 1109 sq. ft, FLOOR 3: 1177 sq. ft
EXCLUDED AREAS: ELECTRICAL ROOM: 57 sq. ft, STORAGE: 74 sq. ft, GARAGE: 385 sq. ft,
PATIO: 204 sq. ft, PORCH: 461 sq. ft

MEASUREMENTS CALCULATED BY V1Photos.com ARE DEEMED HIGHLY RELIABLE BUT NOT GUARANTEED.



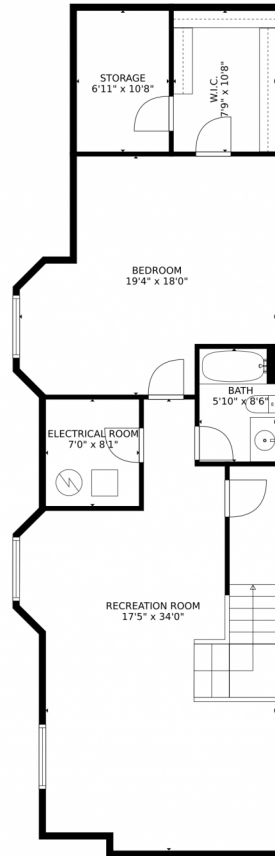
Disclaimer: Sizes and Dimensions are Approximate, Actual May Vary.



Linda Nehls
303-668-7670
linda@lindanehls.com



538 Madison Street, Denver, CO 80206 – Lower Level



TOTAL: 3234 sq. ft
Below Ground: 948 sq. ft, FLOOR 2: 1109 sq. ft, FLOOR 3: 1177 sq. ft
EXCLUDED AREAS: ELECTRICAL ROOM: 57 sq. ft, STORAGE: 74 sq. ft, GARAGE: 385 sq. ft,
PATIO: 204 sq. ft, PORCH: 461 sq. ft

MEASUREMENTS CALCULATED BY V1Photos.com ARE DEEMED HIGHLY RELIABLE BUT NOT GUARANTEED.



Disclaimer: Sizes and Dimensions are Approximate, Actual May Vary.



Linda Nehls
303-668-7670
linda@lindanehls.com



538 Madison Street, Denver, CO 80206 – All Levels



TOTAL: 3234 sq. ft
Below Ground: 948 sq. ft, FLOOR 2: 1109 sq. ft, FLOOR 3: 1177 sq. ft
EXCLUDED AREAS: ELECTRICAL ROOM: 57 sq. ft, STORAGE: 74 sq. ft, GARAGE: 385 sq. ft,
PATIO: 204 sq. ft, PORCH: 461 sq. ft

MEASUREMENTS CALCULATED BY V1Photos.com ARE DEEMED HIGHLY RELIABLE BUT NOT GUARANTEED.



Disclaimer: Sizes and Dimensions are Approximate, Actual May Vary.



Linda Nehls
303-668-7670
linda@lindanehls.com

