



Single Family



2258 SQFT



4 Beds



3/1 Baths



2 Car



Jordan Kermes

952-956-2958

jkermes@wedgewoodhomesrealty.com

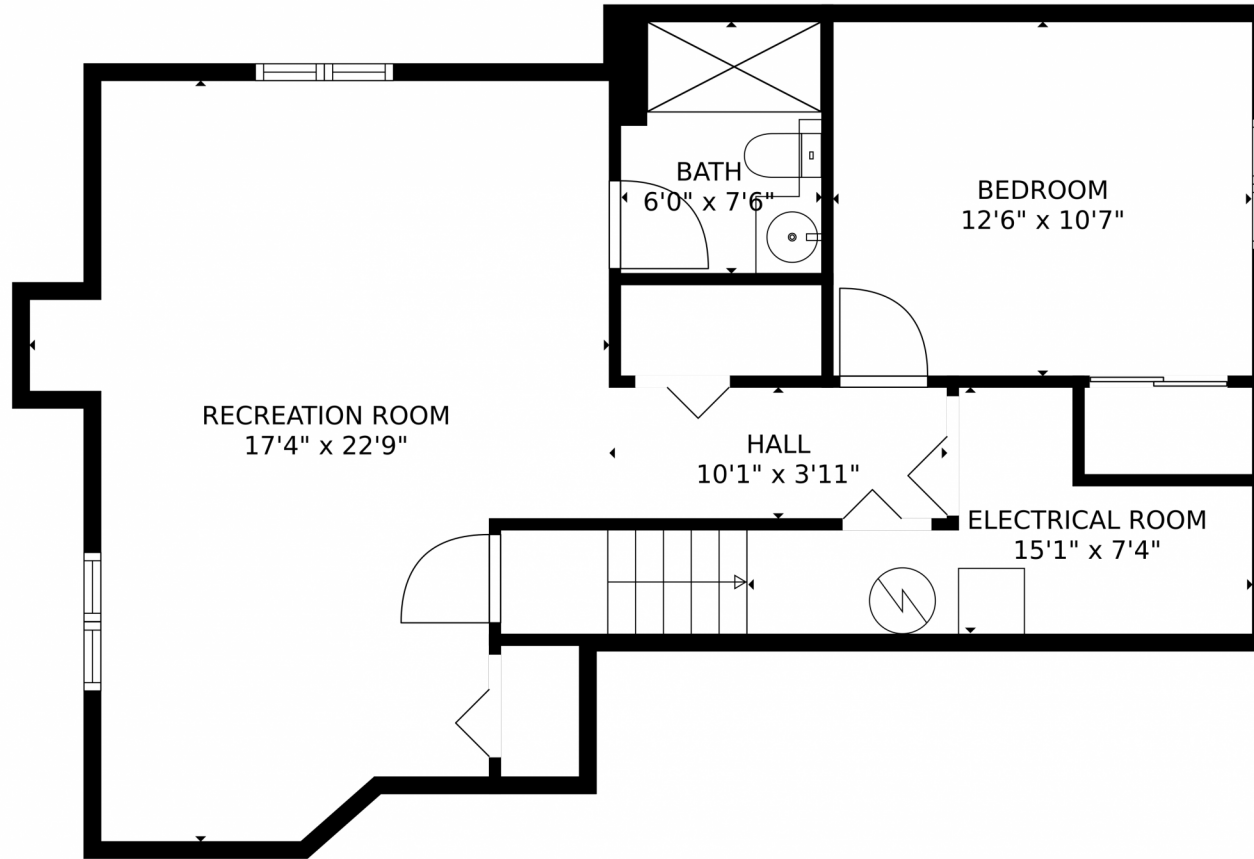
<https://colorado.wedgewoodhomesrealty.com>



Scan code
for more
property
details



6447 Gemfield Drive, Colorado Springs, CO 80918 – Lower Level



TOTAL: 2087 sq. ft
Below Ground: 592 sq. ft, FLOOR 2: 768 sq. ft, FLOOR 3: 727 sq. ft
EXCLUDED AREAS: ELECTRICAL ROOM: 92 sq. ft, GARAGE: 585 sq. ft, PORCH: 50 sq. ft,
DECK: 323 sq. ft, FIREPLACE: 7 sq. ft, EMBEDDED WINDOW: 5 sq. ft
MEASUREMENTS CALCULATED BY V1Photos.com ARE DEEMED HIGHLY RELIABLE BUT NOT GUARANTEED.

Disclaimer: Sizes and Dimensions are Approximate, Actual May Vary.



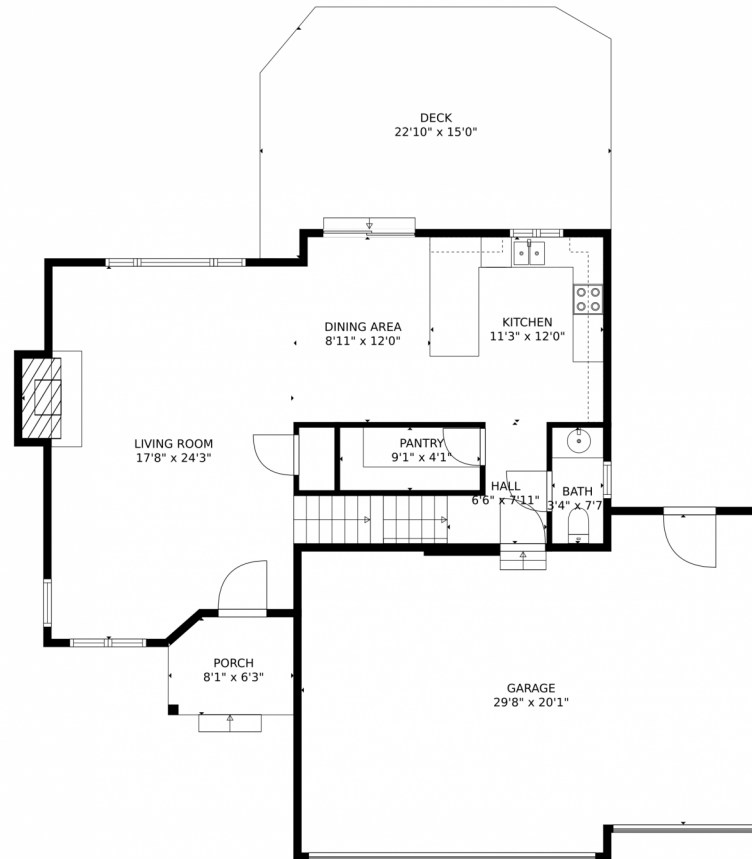
Jordan Kermes
952-956-2958
jkermes@wedgewoodhomesrealty.com
<https://colorado.wedgewoodhomesrealty.com>



Scan code for more property details



6447 Gemfield Drive, Colorado Springs, CO 80918 – Main Level



TOTAL: 2087 sq. ft
Below Ground: 592 sq. ft, FLOOR 2: 768 sq. ft, FLOOR 3: 727 sq. ft
EXCLUDED AREAS: ELECTRICAL ROOM: 92 sq. ft, GARAGE: 585 sq. ft, PORCH: 50 sq. ft,
DECK: 323 sq. ft, FIREPLACE: 7 sq. ft, EMBEDDEDWINDOW: 5 sq. ft
MEASUREMENTS CALCULATED BY V1Photos.com ARE DEEMED HIGHLY RELIABLE BUT NOT GUARANTEED.



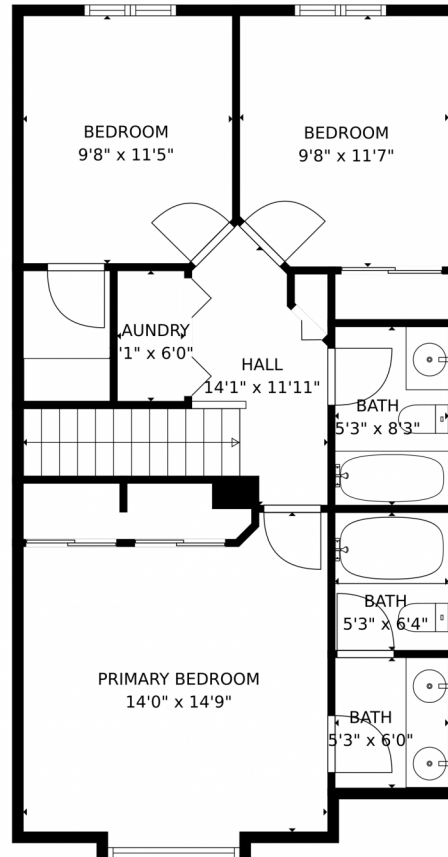
Disclaimer: Sizes and Dimensions are Approximate, Actual May Vary.



Jordan Kermes
952-956-2958
jkermes@wedgewoodhomesrealty.com
<https://colorado.wedgewoodhomesrealty.com>



6447 Gemfield Drive, Colorado Springs, CO 80918 – Upper Level



TOTAL: 2087 sq. ft
Below Ground: 592 sq. ft, FLOOR 2: 768 sq. ft, FLOOR 3: 727 sq. ft
EXCLUDED AREAS: ELECTRICAL ROOM: 92 sq. ft, GARAGE: 585 sq. ft, PORCH: 50 sq. ft,
DECK: 323 sq. ft, FIREPLACE: 7 sq. ft, EMBEDDEDWINDOW: 5 sq. ft
MEASUREMENTS CALCULATED BY V1Photos.com ARE DEEMED HIGHLY RELIABLE BUT NOT GUARANTEED.



Disclaimer: Sizes and Dimensions are Approximate, Actual May Vary.



Jordan Kermes
952-956-2958
jkermes@wedgewoodhomesrealty.com
<https://colorado.wedgewoodhomesrealty.com>



Scan code
for more
property
details



6447 Gemfield Drive, Colorado Springs, CO 80918 – All Levels



TOTAL: 2087 sq. ft

Below Ground: 592 sq. ft, FLOOR 2: 768 sq. ft, FLOOR 3: 727 sq. ft
EXCLUDED AREAS: ELECTRICAL ROOM: 92 sq. ft, GARAGE: 585 sq. ft, PORCH: 50 sq. ft,
DECK: 323 sq. ft, FIREPLACE: 7 sq. ft, EMBEDDED WINDOW: 5 sq. ft

MEASUREMENTS CALCULATED BY V1Photos.com ARE DEEMED HIGHLY RELIABLE BUT NOT GUARANTEED.



Disclaimer: Sizes and Dimensions are Approximate, Actual May Vary.



Jordan Kermes

952-956-2958

jkermes@wedgewoodhomesrealty.com

<https://colorado.wedgewoodhomesrealty.com>



Scan code
for more
property
details

