


 Single Family

 3192 SQFT

 5 Beds

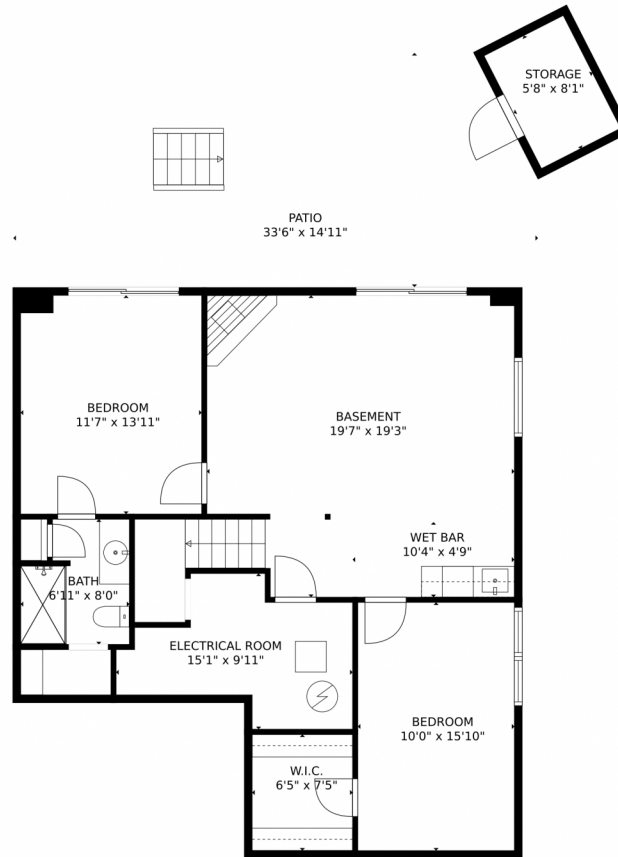
 3/1 Baths



Taylor Haas
 303-665-7368
taylorh@coloradopr.com
<https://www.coloradopr.com/available-rental-properties-denver>



845 Circle Road, Palmer Lake, CO 80133 – Lower Level



TOTAL: 2980 sq. ft
Below Ground: 866 sq. ft, FLOOR 2: 1094 sq. ft, FLOOR 3: 1020 sq. ft
EXCLUDED AREAS: ELECTRICAL ROOM: 103 sq. ft, STORAGE: 46 sq. ft, PATIO: 293 sq. ft,
GARAGE: 369 sq. ft, PORCH: 98 sq. ft, DECK: 141 sq. ft,
OPEN TO BELOW: 270 sq. ft

MEASUREMENTS CALCULATED BY V1Photos.com ARE DEEMED HIGHLY RELIABLE BUT NOT GUARANTEED.



Disclaimer: Sizes and Dimensions are Approximate, Actual May Vary.



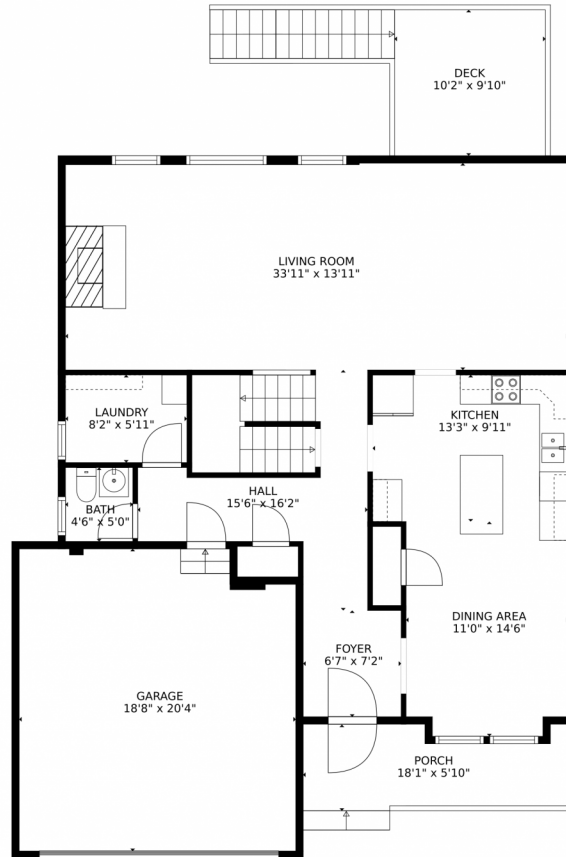
Taylor Haas
303-665-7368
taylorh@coloradorm.com
<https://www.coloradorm.com/available-rental-properties-denver>



Scan code
for more
property
details



845 Circle Road, Palmer Lake, CO 80133 – Main Level



TOTAL: 2980 sq. ft

Below Ground: 866 sq. ft, FLOOR 2: 1094 sq. ft, FLOOR 3: 1020 sq. ft
EXCLUDED AREAS: ELECTRICAL ROOM: 103 sq. ft, STORAGE: 46 sq. ft, PATIO: 293 sq. ft,
GARAGE: 369 sq. ft, PORCH: 98 sq. ft, DECK: 141 sq. ft,
OPEN TO BELOW: 270 sq. ft

MEASUREMENTS CALCULATED BY V1Photos.com ARE DEEMED HIGHLY RELIABLE BUT NOT GUARANTEED.



Disclaimer: Sizes and Dimensions are Approximate, Actual May Vary.



Taylor Haas

303-665-7368

taylorh@coloradorpm.com

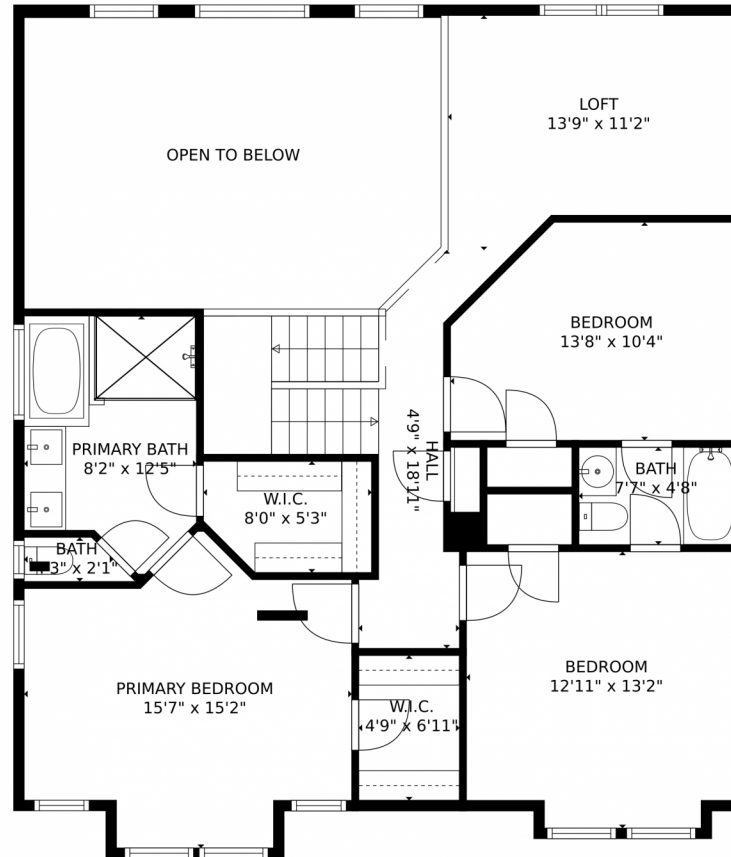
<https://www.coloradorpm.com/available-rental-properties-denver>



Scan code
for more
property
details



845 Circle Road, Palmer Lake, CO 80133 – Upper Level



TOTAL: 2980 sq. ft
Below Ground: 866 sq. ft, FLOOR 2: 1094 sq. ft, FLOOR 3: 1020 sq. ft
EXCLUDED AREAS: ELECTRICAL ROOM: 103 sq. ft, STORAGE: 46 sq. ft, PATIO: 293 sq. ft,
GARAGE: 369 sq. ft, PORCH: 98 sq. ft, DECK: 141 sq. ft,
OPEN TO BELOW: 270 sq. ft

MEASUREMENTS CALCULATED BY V1Photos.com ARE DEEMED HIGHLY RELIABLE BUT NOT GUARANTEED.



Disclaimer: Sizes and Dimensions are Approximate, Actual May Vary.



Taylor Haas

303-665-7368

taylorh@coloradorpm.com

<https://www.coloradorpm.com/available-rental-properties-denver>



Scan code
for more
property
details



845 Circle Road, Palmer Lake, CO 80133 – All Levels



TOTAL: 2980 sq. ft
 Below Ground: 866 sq. ft, FLOOR 2: 1094 sq. ft, FLOOR 3: 1020 sq. ft
 EXCLUDED AREAS: ELECTRICAL ROOM: 103 sq. ft, STORAGE: 46 sq. ft, PATIO: 293 sq. ft,
 GARAGE: 369 sq. ft, PORCH: 98 sq. ft, DECK: 141 sq. ft,
 OPEN TO BELOW: 270 sq. ft

MEASUREMENTS CALCULATED BY V1Photos.COM ARE DEEMED HIGHLY RELIABLE BUT NOT GUARANTEED.



Disclaimer: Sizes and Dimensions are Approximate, Actual May Vary.



Taylor Haas

303-665-7368

taylorh@coloradopr.com

<https://www.coloradopr.com/available-rental-properties-denver>



Scan code
for more
property
details

