




 Single Family
  4962 SQFT
  4 Beds
  3/1 Baths
  3 Car
  1.98 Acre

## PROPERTY DETAILS

This wonderful home is alive with plentiful light and incredible views. True panoramic views of the mountains are yours from the southern deck and the soaring windows throughout the house. Step inside to a home with the latest in design style such as the spacious kitchen with white cabinetry, large granite island with seating, and a sunny breakfast nook. The hardwood floors are beautiful, and it's all open to the vaulted and airy great room with a large gas fireplace. Step outside to the south-facing deck and take in the phenomenal views and sunsets. The layout of the home is ideal with two bedrooms, primary suite, and a loft area upstairs. The primary suite is wonderfully spacious and a true get-away with a spa-like dual vanity bathroom. Soak in the luxurious tub by the fireplace while taking in the views! The loft area makes a great office, library or play area. The lower level features an additional bedroom and cozy family room with glass doors to the exterior and additional deck. The unfinished area with gym flooring is a great place for workout equipment, big playroom or plentiful storage. There is all new carpet throughout the house. Great built-ins, main level laundry room, 3-car finished garage, and smart Ring system are other desirable features of this delightful remodeled home. Work from home with excellent high speed internet while you enjoy the scenery through the multitude of windows. Located at the end of a quiet cul de sac, you have wonderful privacy, paved roads,



**Pandora & John Erlandson**  
 303-888-6298  
 pandora@pandorajohnproperties.com  
<https://www.pandorajohnproperties.com>



and of course, those incredible views. Just 11 minutes to the closest restaurants, and 15 minutes to downtown Evergreen too. Welcome to ideal Evergreen living!



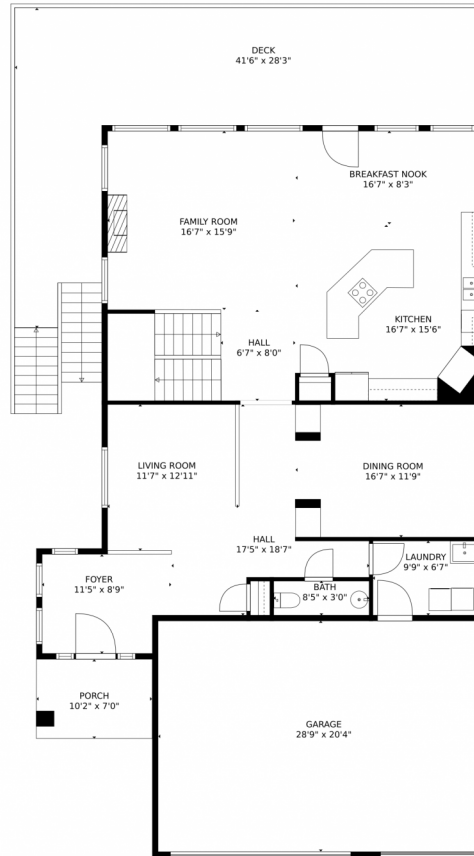
**Pandora & John Erlandson**  
303-888-6298  
pandora@pandorajohnproperties.com  
<https://www.pandorajohnproperties.com>



Scan code  
for more  
property  
details



# 29581 Falcon Ridge Drive, Evergreen, CO 80439 – Main Level



**TOTAL: 3516 sq. ft**

Below Ground: 638 sq. ft, FLOOR 2: 1485 sq. ft, FLOOR 3: 1393 sq. ft  
EXCLUDED AREAS: LOW CEILING: 91 sq. ft, DECK: 676 sq. ft, BASEMENT: 745 sq. ft,  
GARAGE: 586 sq. ft, PORCH: 72 sq. ft, OPEN TO BELOW: 363 sq. ft

MEASUREMENTS CALCULATED BY V1Photos.com ARE DEEMED HIGHLY RELIABLE BUT NOT GUARANTEED.



Disclaimer: Sizes and Dimensions are Approximate, Actual May Vary.



**Pandora & John Erlandson**

303-888-6298

[pandora@pandorajohnproperties.com](mailto:pandora@pandorajohnproperties.com)

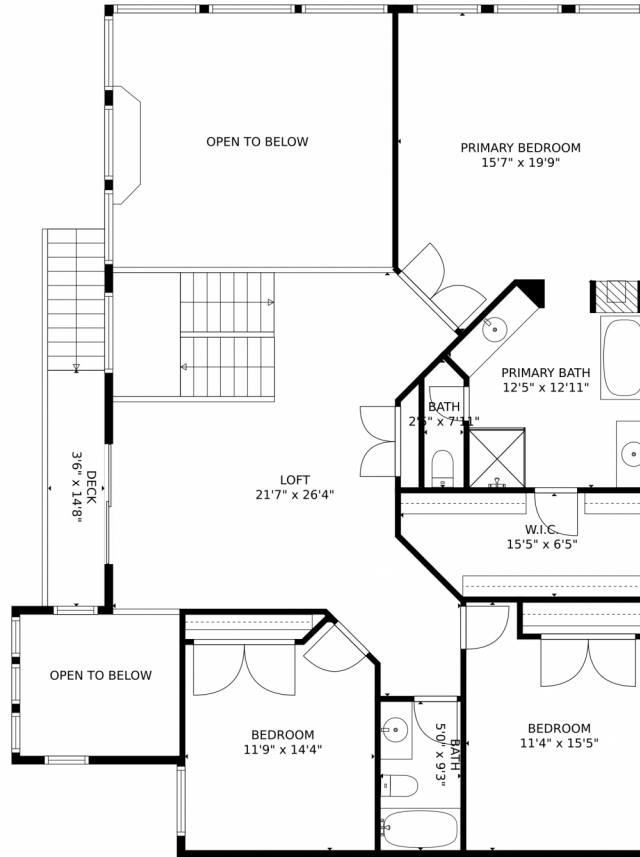
<https://www.pandorajohnproperties.com>



Scan code  
for more  
property  
details



# 29581 Falcon Ridge Drive, Evergreen, CO 80439 – Upper Level



**TOTAL: 3516 sq. ft**  
Below Ground: 638 sq. ft, FLOOR 2: 1485 sq. ft, FLOOR 3: 1393 sq. ft  
EXCLUDED AREAS: LOW CEILING: 91 sq. ft, DECK: 676 sq. ft, BASEMENT: 745 sq. ft,  
GARAGE: 586 sq. ft, PORCH: 72 sq. ft, OPEN TO BELOW: 363 sq. ft

MEASUREMENTS CALCULATED BY V1Photos.com ARE DEEMED HIGHLY RELIABLE BUT NOT GUARANTEED.



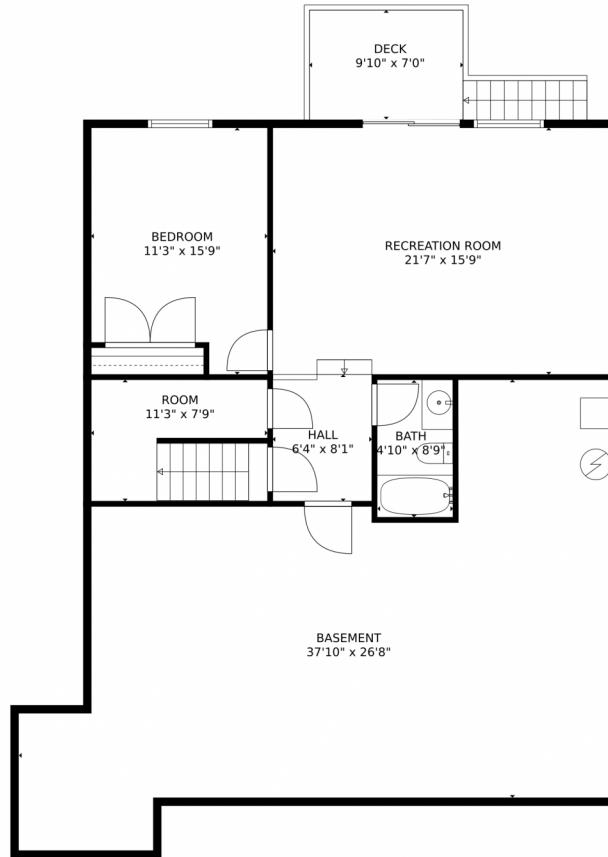
Disclaimer: Sizes and Dimensions are Approximate, Actual May Vary.



**Pandora & John Erlandson**  
303-888-6298  
pandora@pandorajohnproperties.com  
<https://www.pandorajohnproperties.com>



# 29581 Falcon Ridge Drive, Evergreen, CO 80439 – Lower Level



**TOTAL: 3516 sq. ft**  
Below Ground: 638 sq. ft, FLOOR 2: 1485 sq. ft, FLOOR 3: 1393 sq. ft  
EXCLUDED AREAS: LOW CEILING: 91 sq. ft, DECK: 676 sq. ft, BASEMENT: 745 sq. ft,  
GARAGE: 586 sq. ft, PORCH: 72 sq. ft, OPEN TO BELOW: 363 sq. ft  
MEASUREMENTS CALCULATED BY V1Photos.com ARE DEEMED HIGHLY RELIABLE BUT NOT GUARANTEED.



Disclaimer: Sizes and Dimensions are Approximate, Actual May Vary.



**Pandora & John Erlandson**  
303-888-6298  
pandora@pandorajohnproperties.com  
<https://www.pandorajohnproperties.com>



# 29581 Falcon Ridge Drive, Evergreen, CO 80439 – All Levels



**TOTAL: 3516 sq. ft**  
 Below Ground: 638 sq. ft, FLOOR 2: 1485 sq. ft, FLOOR 3: 1393 sq. ft  
 EXCLUDED AREAS: LOW CEILING: 91 sq. ft, DECK: 676 sq. ft, BASEMENT: 745 sq. ft,  
 GARAGE: 586 sq. ft, PORCH: 72 sq. ft, OPEN TO BELOW: 363 sq. ft

MEASUREMENTS CALCULATED BY V1Photos.com ARE DEEMED HIGHLY RELIABLE BUT NOT GUARANTEED.



Disclaimer: Sizes and Dimensions are Approximate, Actual May Vary.



**Pandora & John Erlandson**  
 303-888-6298  
 pandora@pandorajohnproperties.com  
<https://www.pandorajohnproperties.com>

