

Single Family



1296 SQFT



3 Beds



1/1 Baths



1 Car



0.15 Acre



Eve Evans

303-848-2002

Eve@TheRealEveEvans.com

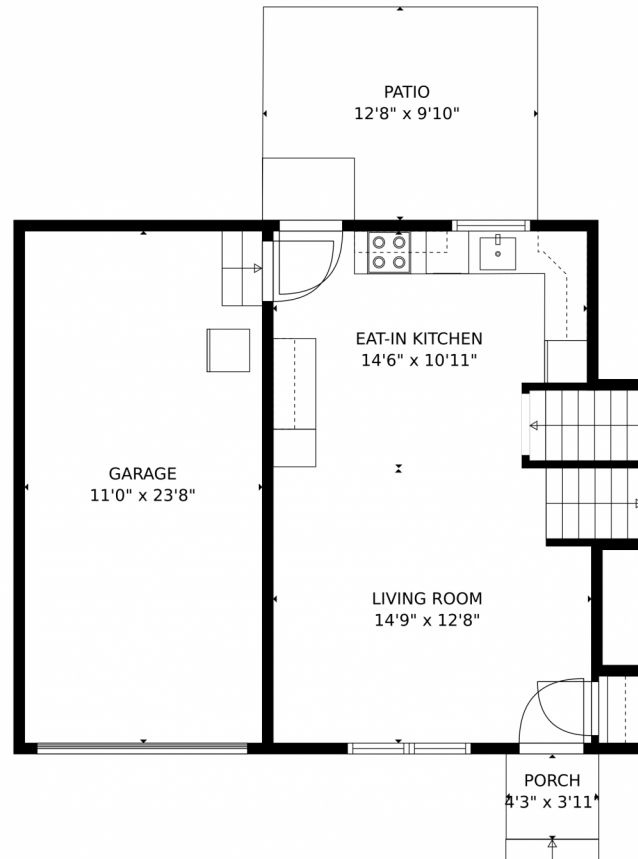
<https://www.TheRealEveEvans.com/>



Scan code
for more
property
details



1029 South Newark Street, Aurora, CO 80012 — Main Level



TOTAL: 1238 sq. ft
Below Ground: 398 sq. ft, FLOOR 2: 0 sq. ft, FLOOR 3: 371 sq. ft, FLOOR 4: 469 sq. ft
EXCLUDED AREAS: STORAGE: 97 sq. ft, GARAGE: 260 sq. ft, PORCH: 17 sq. ft,
PATIO: 125 sq. ft

MEASUREMENTS CALCULATED BY V1Photos.com ARE DEEMED HIGHLY RELIABLE BUT NOT GUARANTEED.



Disclaimer: Sizes and Dimensions are Approximate, Actual May Vary.



Eve Evans

303-848-2002

Eve@TheRealEveEvans.com

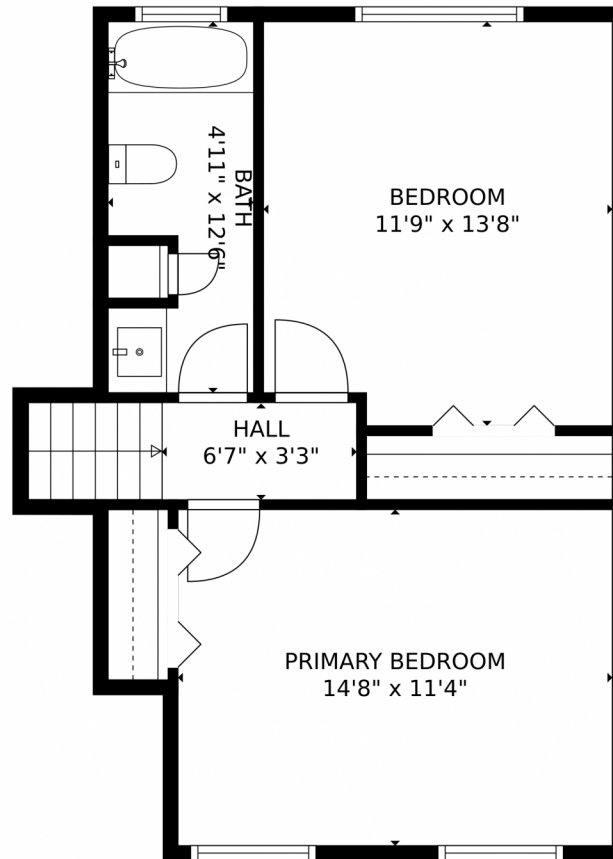
<https://www.TheRealEveEvans.com/>



Scan code
for more
property
details



1029 South Newark Street, Aurora, CO 80012 – Upper Level



TOTAL: 1238 sq. ft
Below Ground: 398 sq. ft, FLOOR 2: 0 sq. ft, FLOOR 3: 371 sq. ft, FLOOR 4: 469 sq. ft
EXCLUDED AREAS: STORAGE: 97 sq. ft, GARAGE: 260 sq. ft, PORCH: 17 sq. ft,
PATIO: 125 sq. ft

MEASUREMENTS CALCULATED BY V1Photos.com ARE DEEMED HIGHLY RELIABLE BUT NOT GUARANTEED.



Disclaimer: Sizes and Dimensions are Approximate, Actual May Vary.



Eve Evans

303-848-2002

Eve@TheRealEveEvans.com

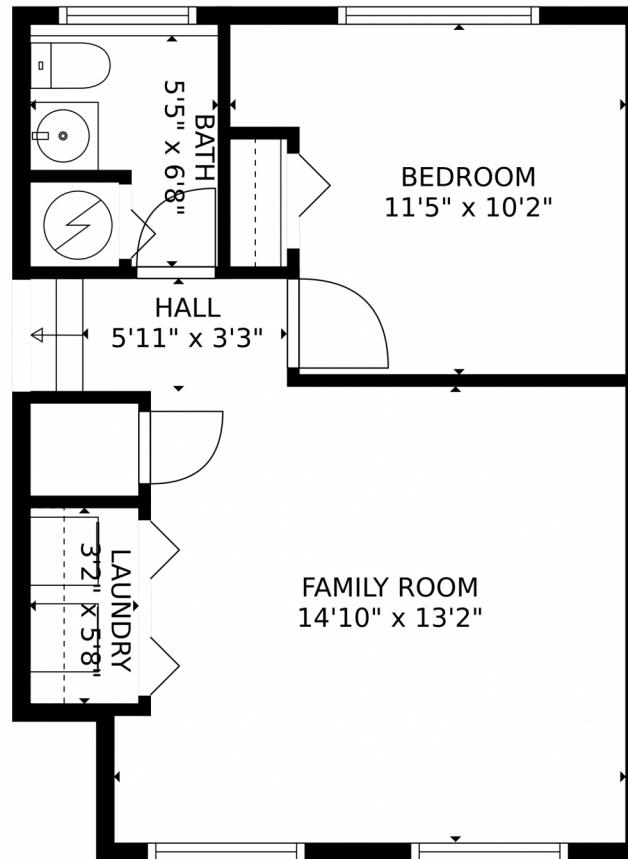
<https://www.TheRealEveEvans.com/>



Scan code
for more
property
details



1029 South Newark Street, Aurora, CO 80012 – Lower Level



TOTAL: 1238 sq. ft
Below Ground: 398 sq. ft, FLOOR 2: 0 sq. ft, FLOOR 3: 371 sq. ft, FLOOR 4: 469 sq. ft
EXCLUDED AREAS: STORAGE: 97 sq. ft, GARAGE: 260 sq. ft, PORCH: 17 sq. ft,
PATIO: 125 sq. ft

MEASUREMENTS CALCULATED BY V1Photos.com ARE DEEMED HIGHLY RELIABLE BUT NOT GUARANTEED.



Disclaimer: Sizes and Dimensions are Approximate, Actual May Vary.



Eve Evans

303-848-2002

Eve@TheRealEveEvans.com

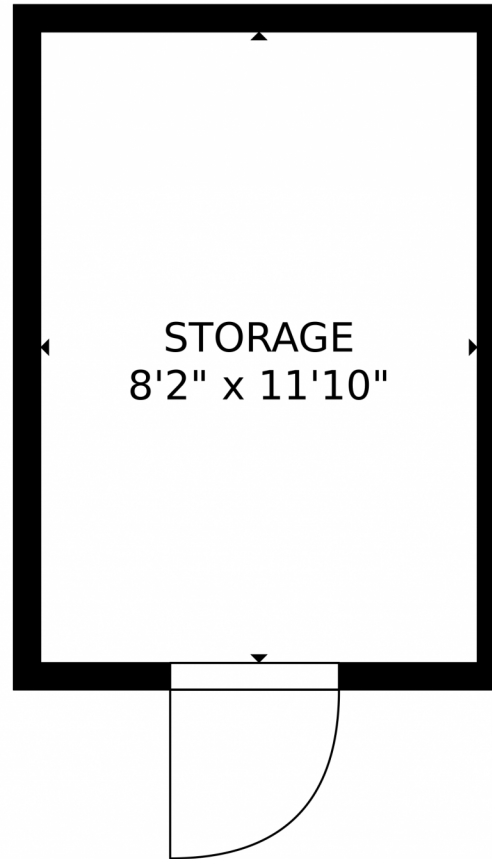
<https://www.TheRealEveEvans.com/>



Scan code
for more
property
details



1029 South Newark Street, Aurora, CO 80012 — Shed



TOTAL: 1238 sq. ft
Below Ground: 398 sq. ft, FLOOR 2: 0 sq. ft, FLOOR 3: 371 sq. ft, FLOOR 4: 469 sq. ft
EXCLUDED AREAS: STORAGE: 97 sq. ft, GARAGE: 260 sq. ft, PORCH: 17 sq. ft,
PATIO: 125 sq. ft

MEASUREMENTS CALCULATED BY V1Photos.com ARE DEEMED HIGHLY RELIABLE BUT NOT GUARANTEED.



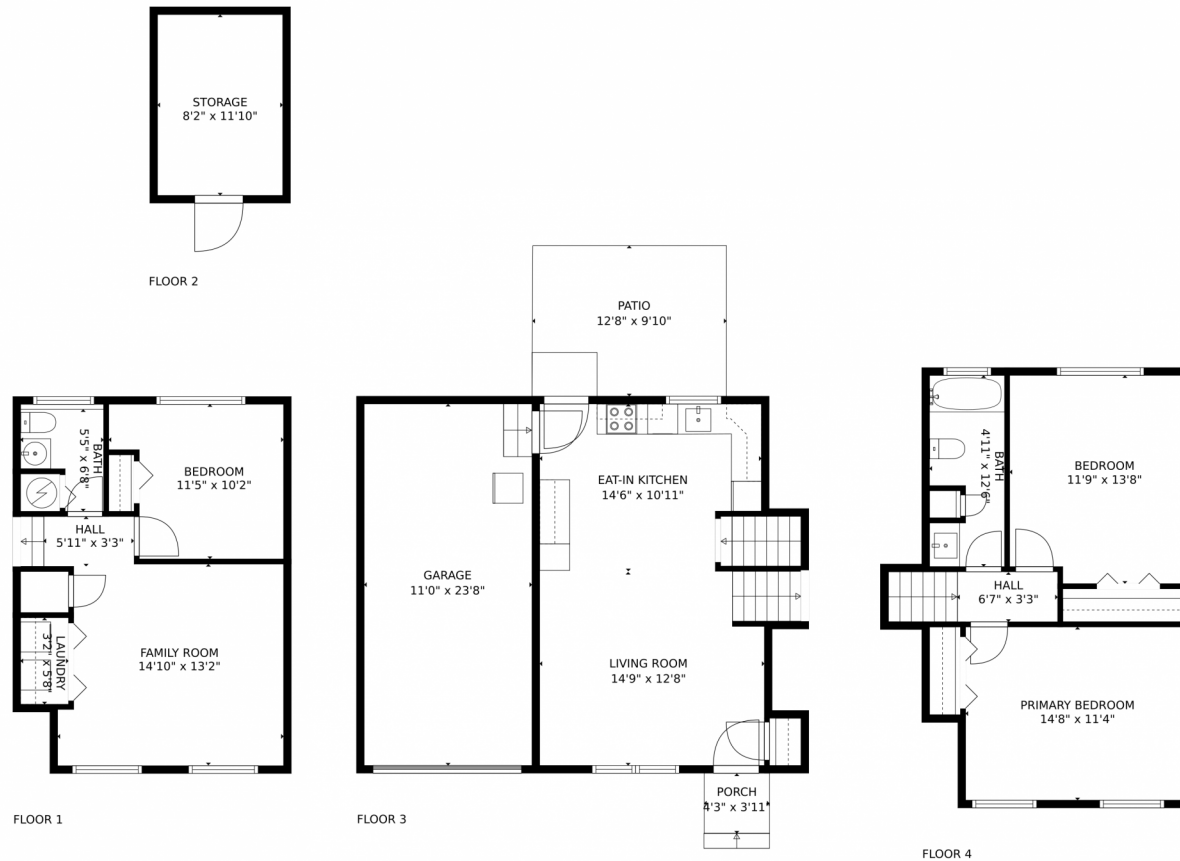
Disclaimer: Sizes and Dimensions are Approximate, Actual May Vary.



Eve Evans
303-848-2002
Eve@TheRealEveEvans.com
<https://www.TheRealEveEvans.com/>



1029 South Newark Street, Aurora, CO 80012 — All Levels



TOTAL: 1238 sq. ft
Below Ground: 398 sq. ft, FLOOR 2: 0 sq. ft, FLOOR 3: 371 sq. ft, FLOOR 4: 469 sq. ft
EXCLUDED AREAS: STORAGE: 97 sq. ft, GARAGE: 260 sq. ft, PORCH: 17 sq. ft,
PATIO: 125 sq. ft

MEASUREMENTS CALCULATED BY V1Photos.com ARE DEEMED HIGHLY RELIABLE BUT NOT GUARANTEED.



Disclaimer: Sizes and Dimensions are Approximate, Actual May Vary.



Eve Evans

303-848-2002

Eve@TheRealEveEvans.com

<https://www.TheRealEveEvans.com/>



Scan code
for more
property
details

