



496 Gannet Peak Drive, Windsor, CO 80550 - 2nd_floor_496_gannet_peak_dr_windsor_with_dim



Single Family



2964 SQFT



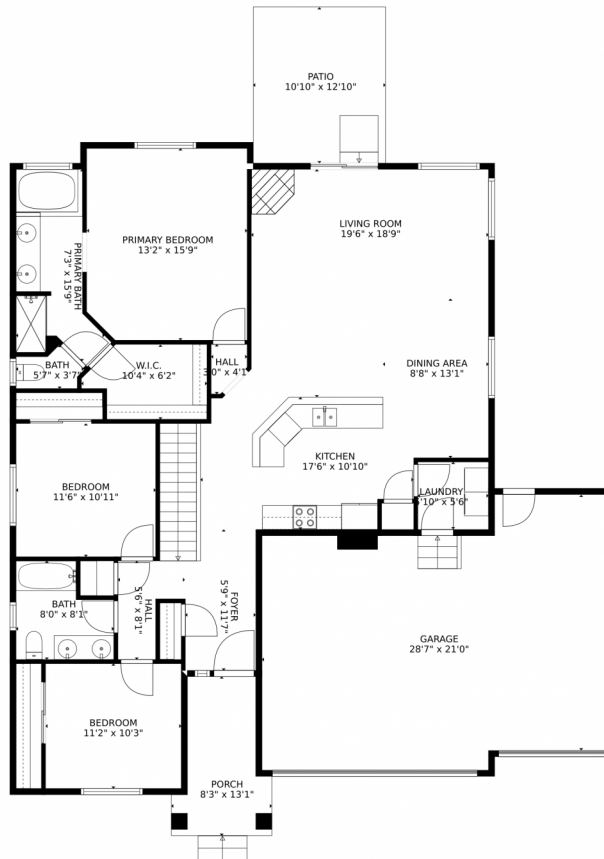
Rondi DuPont
970-401-0123
rdupont@thegroupinc.com
<https://rondidupont.com/>



Scan code
for more
property
details



496 Gannet Peak Drive, Windsor, CO 80550 — Main Level



TOTAL: 2733 sq. ft
Below Ground: 1203 sq. ft, FLOOR 2: 1530 sq. ft
EXCLUDED AREAS: ELECTRICAL ROOM: 131 sq. ft, PORCH: 84 sq. ft, PATIO: 139 sq. ft,
GARAGE: 566 sq. ft

MEASUREMENTS CALCULATED BY V1Photos.com ARE DEEMED HIGHLY RELIABLE BUT NOT GUARANTEED.



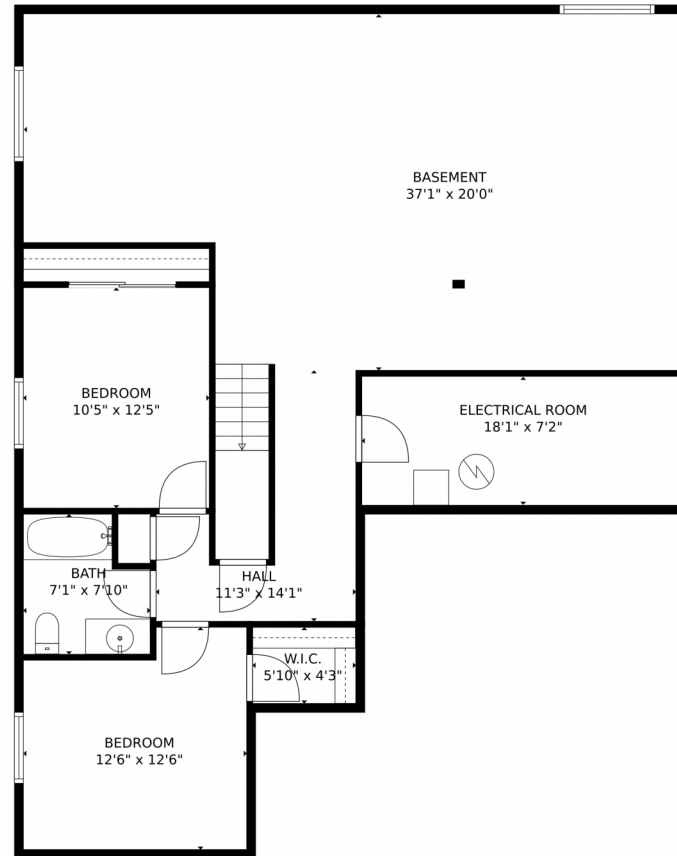
Disclaimer: Sizes and Dimensions are Approximate, Actual May Vary.



Rondi DuPont
970-401-0123
rdupont@thegroupinc.com
<https://rondidupont.com/>



496 Gannet Peak Drive, Windsor, CO 80550 — Lower Level



TOTAL: 2733 sq. ft
Below Ground: 1203 sq. ft, FLOOR 2: 1530 sq. ft
EXCLUDED AREAS: ELECTRICAL ROOM: 131 sq. ft, PORCH: 84 sq. ft, PATIO: 139 sq. ft,
GARAGE: 566 sq. ft

MEASUREMENTS CALCULATED BY V1Photos.com ARE DEEMED HIGHLY RELIABLE BUT NOT GUARANTEED.



Disclaimer: Sizes and Dimensions are Approximate, Actual May Vary.



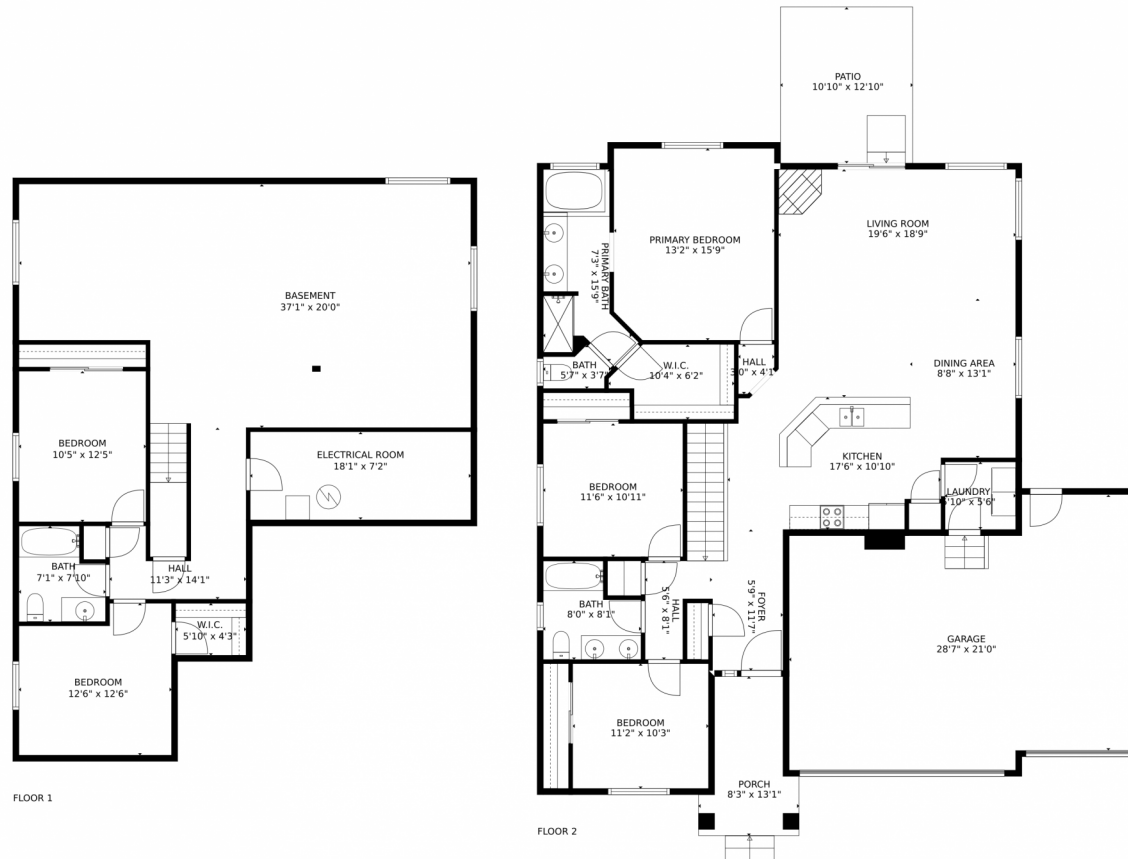
Rondi DuPont
970-401-0123
rdupont@thegroupinc.com
<https://rondidupont.com/>



Scan code
for more
property
details



496 Gannet Peak Drive, Windsor, CO 80550 — Main Level



TOTAL: 2733 sq. ft

Below Ground: 1203 sq. ft, FLOOR 2: 1530 sq. ft

EXCLUDED AREAS: ELECTRICAL ROOM: 131 sq. ft, PORCH: 84 sq. ft, PATIO: 139 sq. ft,
GARAGE: 566 sq. ft

MEASUREMENTS CALCULATED BY V1Photos.COM ARE DEEMED HIGHLY RELIABLE BUT NOT GUARANTEED.



Disclaimer: Sizes and Dimensions are Approximate, Actual May Vary.



Rondi DuPont
970-401-0123
rdupont@thegroupinc.com
<https://rondidupont.com/>

