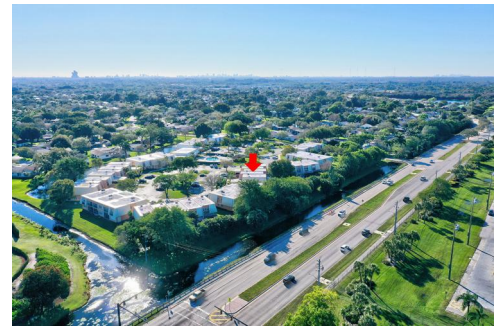





3621 Citrus Trce
 Davie, FL 33328
 COMMUNITY: Isla Merita



 Townhouse

 1440 SQFT

 2 Beds

 2 Baths



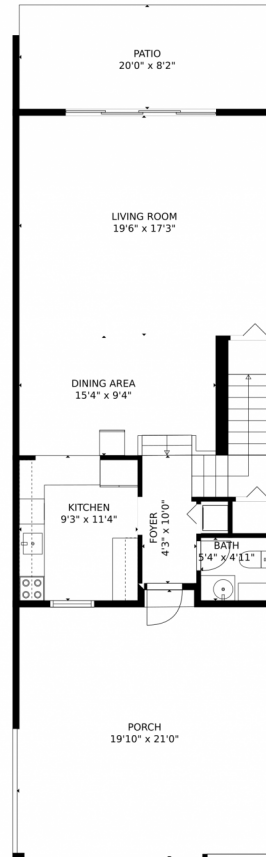
Matt Smith
 954-632-7344
 matt@sflrealtysource.com



Scan code
 for more
 property
 details



3621 Citrus Trce, Davie, FL 33328 – 1st Level



TOTAL: 1474 sq. ft
FLOOR 1: 734 sq. ft, FLOOR 2: 740 sq. ft
EXCLUDED AREAS: PATIO: 163 sq. ft, PORCH: 392 sq. ft

MEASUREMENTS CALCULATED BY V1Photos.com ARE DEEMED HIGHLY RELIABLE BUT NOT GUARANTEED.



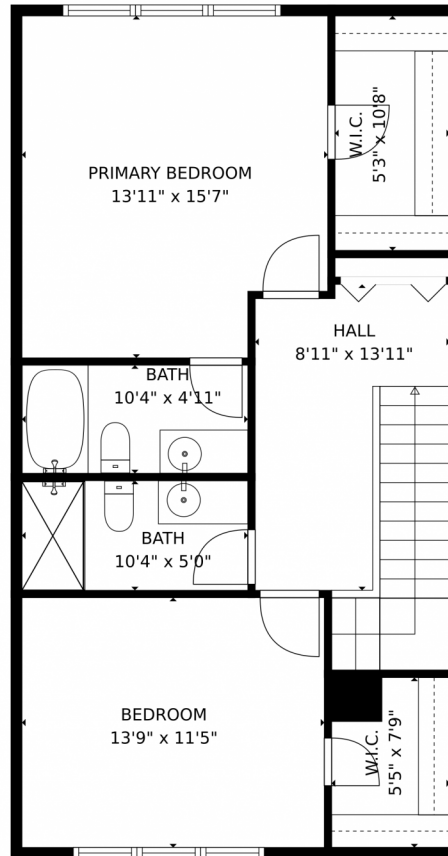
Disclaimer: Sizes and Dimensions are Approximate, Actual May Vary.



Matt Smith
954-632-7344
matt@sflrealtysource.com



3621 Citrus Trce, Davie, FL 33328 – 2nd Level



TOTAL: 1474 sq. ft
FLOOR 1: 734 sq. ft, FLOOR 2: 740 sq. ft
EXCLUDED AREAS: PATIO: 163 sq. ft, PORCH: 392 sq. ft

MEASUREMENTS CALCULATED BY V1Photos.com ARE DEEMED HIGHLY RELIABLE BUT NOT GUARANTEED.



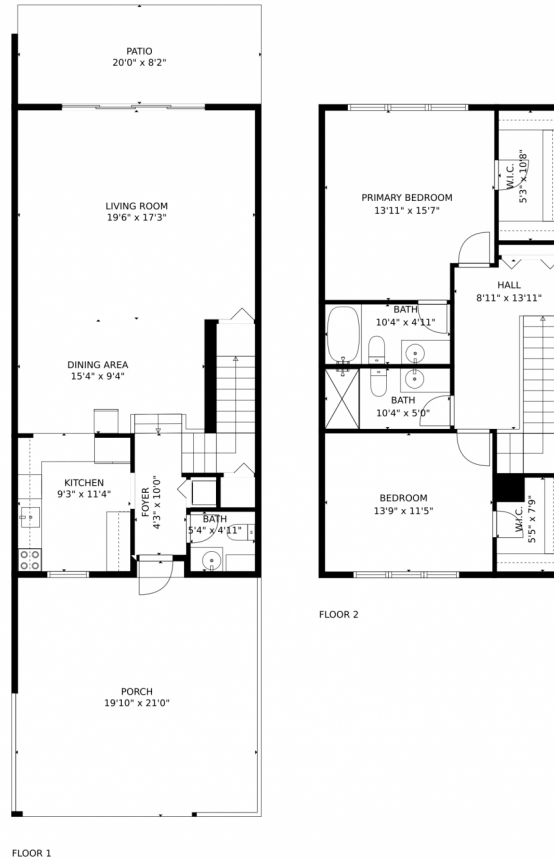
Disclaimer: Sizes and Dimensions are Approximate, Actual May Vary.



Matt Smith
954-632-7344
matt@sflrealtysource.com



3621 Citrus Trce, Davie, FL 33328 – All Levels



TOTAL: 1474 sq. ft

FLOOR 1: 734 sq. ft, FLOOR 2: 740 sq. ft

EXCLUDED AREAS: PATIO: 163 sq. ft, PORCH: 392 sq. ft

MEASUREMENTS CALCULATED BY V1Photos.com ARE DEEMED HIGHLY RELIABLE BUT NOT GUARANTEED.



Disclaimer: Sizes and Dimensions are Approximate, Actual May Vary.



Matt Smith
954-632-7344
matt@sflrealtysource.com



Scan code
for more
property
details

