



12 Alnwick Road  
 Palm Beach Gardens, FL 33418  
 COMMUNITY: PGA National Burwick



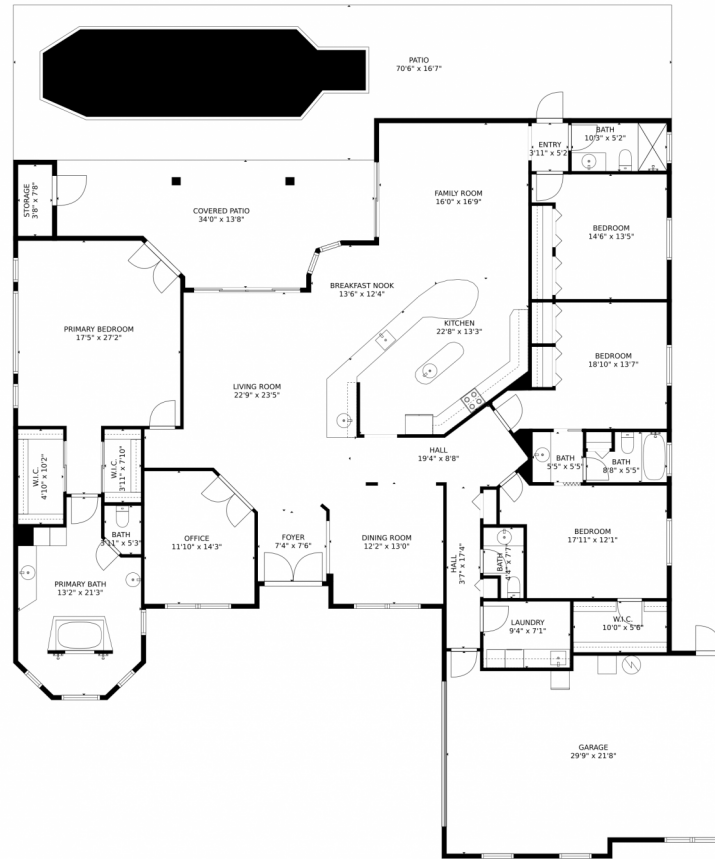
Single Family    3566 SQFT    4 Beds    3/1 Baths    2 Car



**Darren Goldstein Ron Bill**  
 561-262-0730  
 rb@exceptionalpropertiesfl.com



12 Alwick Road, Palm Beach Gardens, FL 33418 — all\_floors\_12\_alwick\_road\_palm\_beach\_gardens\_with



**TOTAL: 3234 sq. ft**  
FLOOR 1: 3234 sq. ft  
EXCLUDED AREAS: GARAGE: 595 sq. ft, STORAGE: 28 sq. ft, COVERED PATIO: 366 sq. ft,  
PATIO: 747 sq. ft

MEASUREMENTS CALCULATED BY V1Photos.com ARE DEEMED HIGHLY RELIABLE BUT NOT GUARANTEED.



Disclaimer: Sizes and Dimensions are Approximate, Actual May Vary.



**Darren Goldstein Ron Bill**  
561-262-0730  
rb@exceptionalpropertiesfl.com

