



509 Twilight Court
 Fort Lupton, CO 80621
 COMMUNITY: Mountain Sky



Single Family



2289 SQFT



3 Beds



3 Baths



2 Car



0.17 Acre



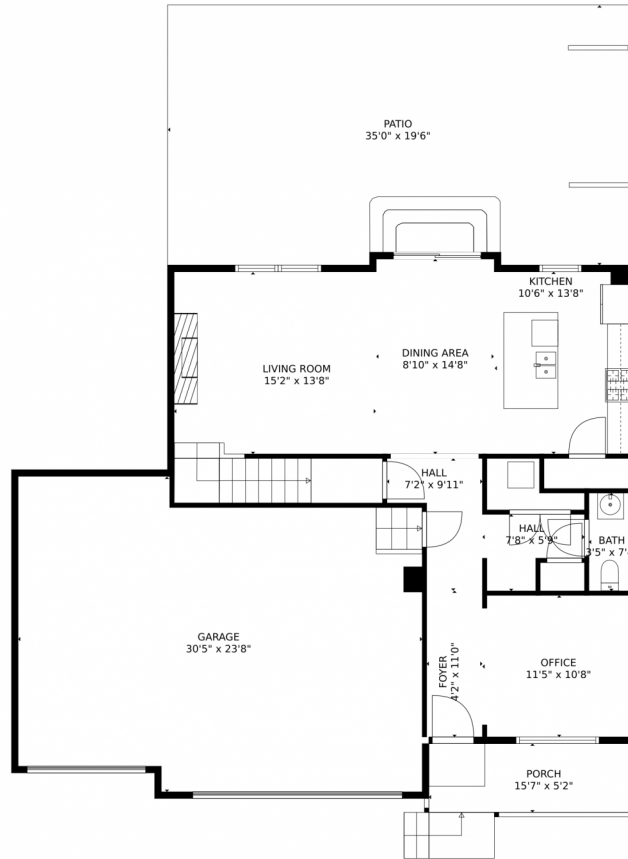
Lucas Akers
 303-870-0500
 lucas@homefindersofdenver.com



Scan code
 for more
 property
 details



509 Twilight Court, Fort Lupton, CO 80621 – Main Level



TOTAL: 2110 sq. ft
FLOOR 1: 883 sq. ft, FLOOR 2: 1227 sq. ft
EXCLUDED AREAS: GARAGE: 655 sq. ft, PORCH: 81 sq. ft, PATIO: 676 sq. ft
MEASUREMENTS CALCULATED BY V1Photos.com ARE DEEMED HIGHLY RELIABLE BUT NOT GUARANTEED.



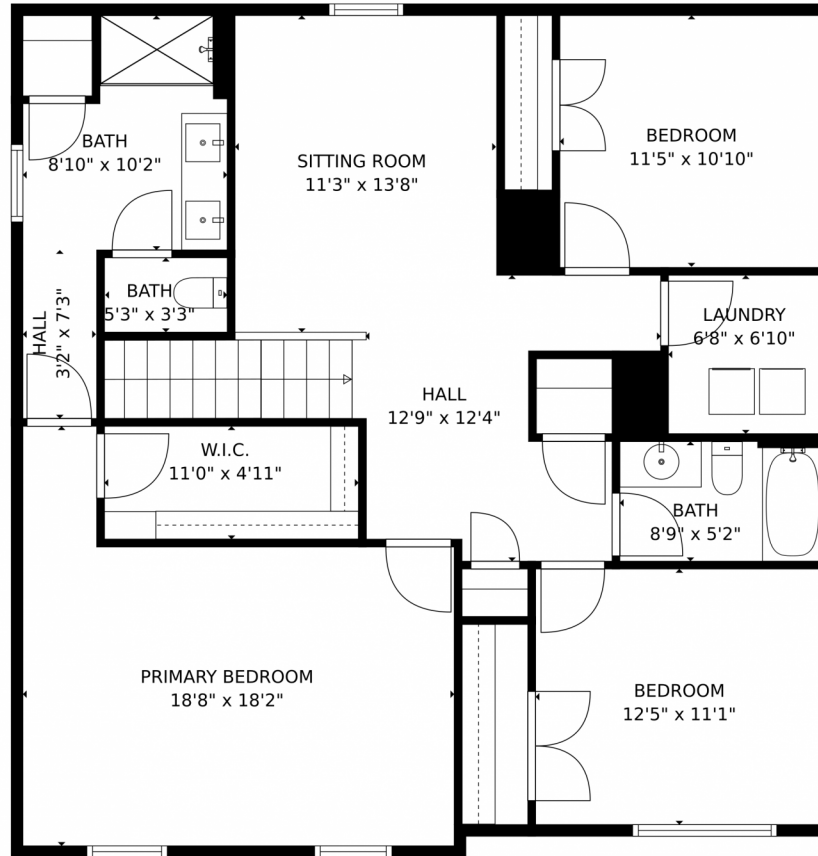
Disclaimer: Sizes and Dimensions are Approximate, Actual May Vary.



Lucas Akers
303-870-0500
lucas@homefindersofdenver.com



509 Twilight Court, Fort Lupton, CO 80621 – Second Level



TOTAL: 2110 sq. ft
FLOOR 1: 883 sq. ft, FLOOR 2: 1227 sq. ft
EXCLUDED AREAS: GARAGE: 655 sq. ft, PORCH: 81 sq. ft, PATIO: 676 sq. ft
MEASUREMENTS CALCULATED BY V1Photos.com ARE DEEMED HIGHLY RELIABLE BUT NOT GUARANTEED.

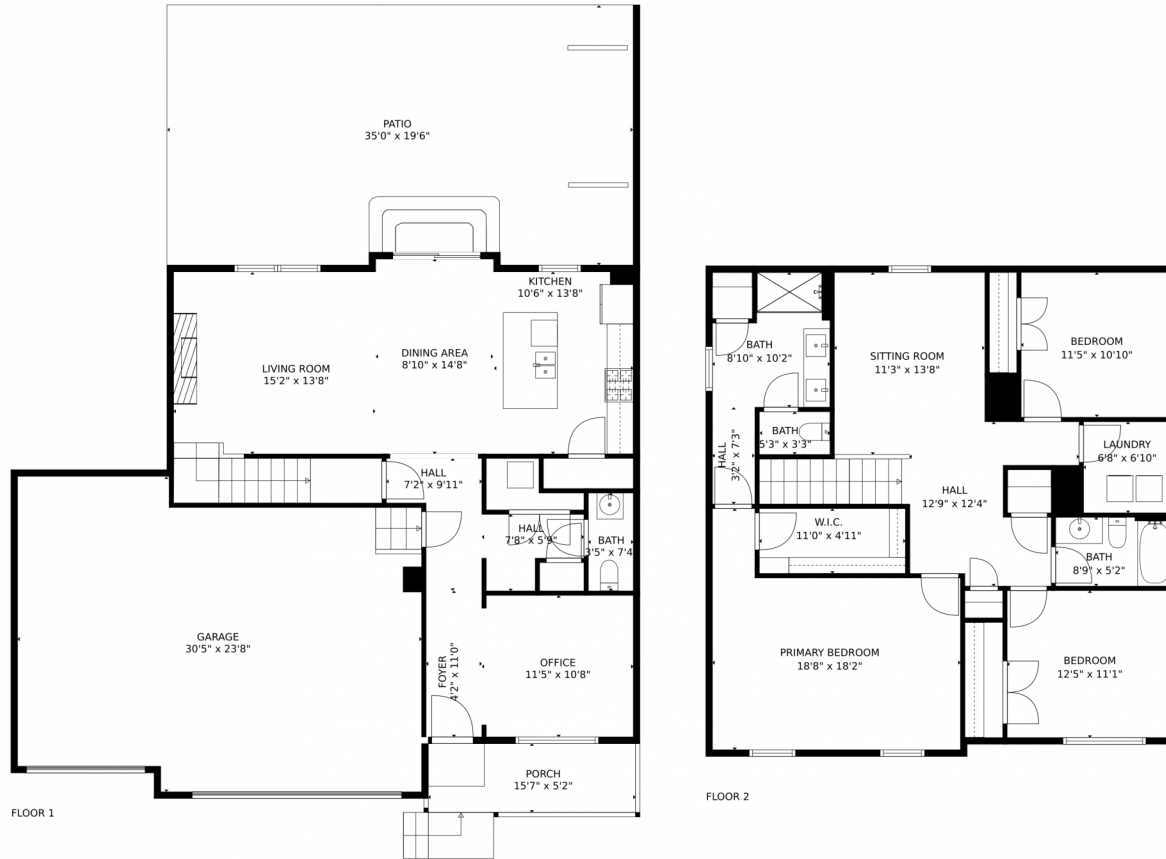
Disclaimer: Sizes and Dimensions are Approximate, Actual May Vary.



Lucas Akers
303-870-0500
lucas@homefindersofdenver.com



509 Twilight Court, Fort Lupton, CO 80621 – All Levels



TOTAL: 2110 sq. ft
FLOOR 1: 883 sq. ft, FLOOR 2: 1227 sq. ft
EXCLUDED AREAS: GARAGE: 655 sq. ft, PORCH: 81 sq. ft, PATIO: 676 sq. ft
MEASUREMENTS CALCULATED BY V1Photos.com ARE DEEMED HIGHLY RELIABLE BUT NOT GUARANTEED.



Disclaimer: Sizes and Dimensions are Approximate, Actual May Vary.



Lucas Akers
303-870-0500
lucas@homefindersofdenver.com

