



11411 West Lake Drive  
 Littleton, CO 80127  
 COMMUNITY: Flintlock

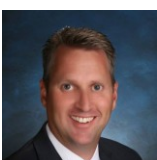
PRICE \$575,000



Single Family   1500 SQFT   3 Beds   1/1 Baths   2 Car   0.17 Acre

## PROPERTY DETAILS

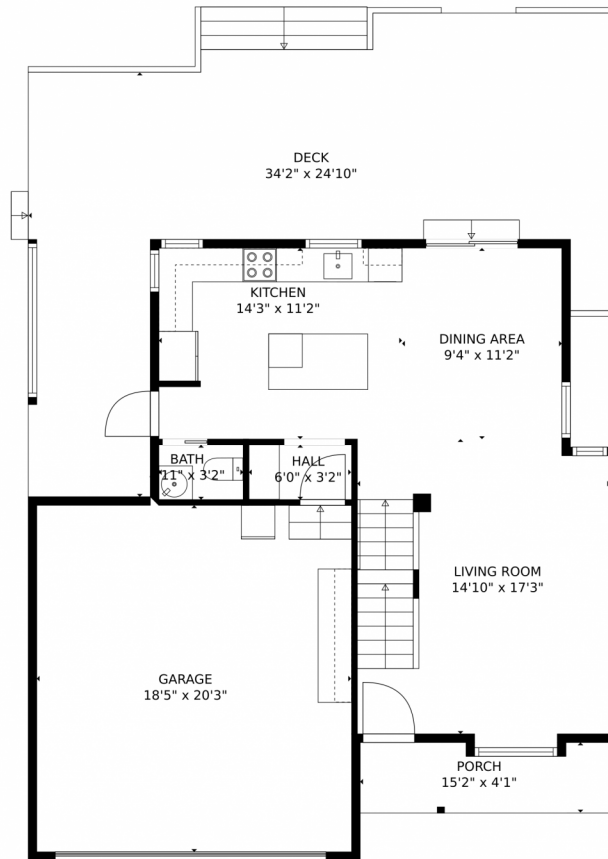
This stunning 2-story home has been completely remodeled and features 3 beds, 2 baths, a finished basement, and an attached 2-car garage. The kitchen is gorgeous with quartz counters, shaker style cabinets, and stainless appliances. The living room has vaulted ceilings and skylights. The upper floor has 3 bedrooms and a remodeled bath. The basement is finished with a family room and storage area. The large lot includes a wood deck and hot tub. Don't miss this amazing home.



**Greg Dach**  
 303-525-9006  
 gregdach@remax.net



# 11411 West Lake Drive, Littleton, CO 80127 – Main Level



**TOTAL: 1320 sq. ft**  
Below Ground: 203 sq. ft, FLOOR 2: 557 sq. ft, FLOOR 3: 560 sq. ft  
EXCLUDED AREAS: UTILITY: 183 sq. ft, GARAGE: 374 sq. ft, DECK: 510 sq. ft,  
PORCH: 58 sq. ft, EMBEDDEDWINDOW: 5 sq. ft, OPEN TO BELOW: 181 sq. ft  
MEASUREMENTS CALCULATED BY V1Photos.com ARE DEEMED HIGHLY RELIABLE BUT NOT GUARANTEED.



Disclaimer: Sizes and Dimensions are Approximate, Actual May Vary.

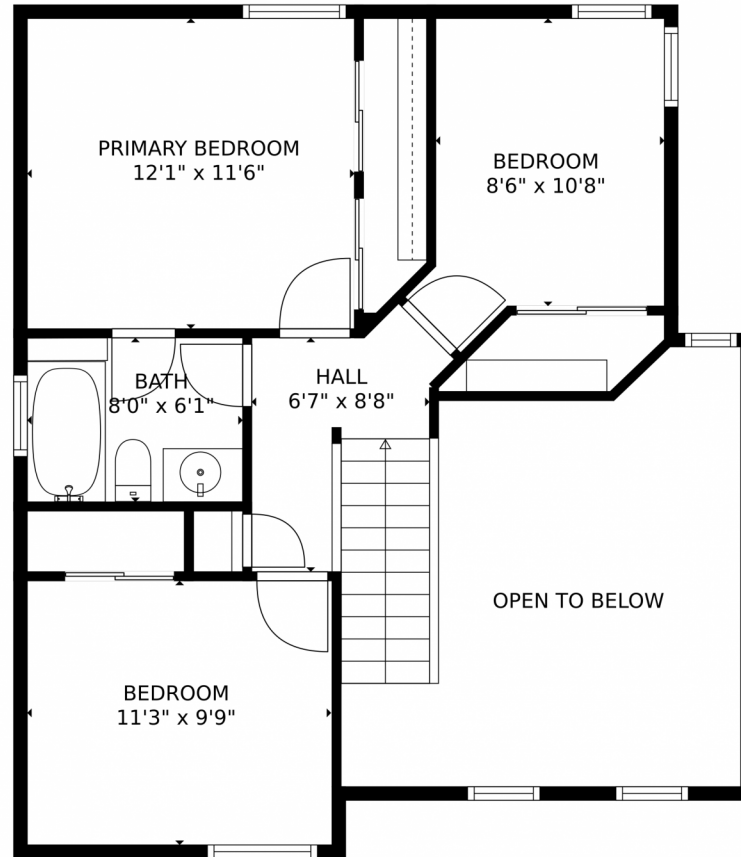


**Greg Dach**  
303-525-9006  
gregdach@remax.net



Scan code  
for more  
property  
details

11411 West Lake Drive, Littleton, CO 80127 – Second Level



**TOTAL: 1320 sq. ft**  
Below Ground: 203 sq. ft, FLOOR 2: 557 sq. ft, FLOOR 3: 560 sq. ft  
EXCLUDED AREAS: UTILITY: 183 sq. ft, GARAGE: 374 sq. ft, DECK: 510 sq. ft,  
PORCH: 58 sq. ft, EMBEDDEDWINDOW: 5 sq. ft, OPEN TO BELOW: 181 sq. ft  
MEASUREMENTS CALCULATED BY V1Photos.com ARE DEEMED HIGHLY RELIABLE BUT NOT GUARANTEED.

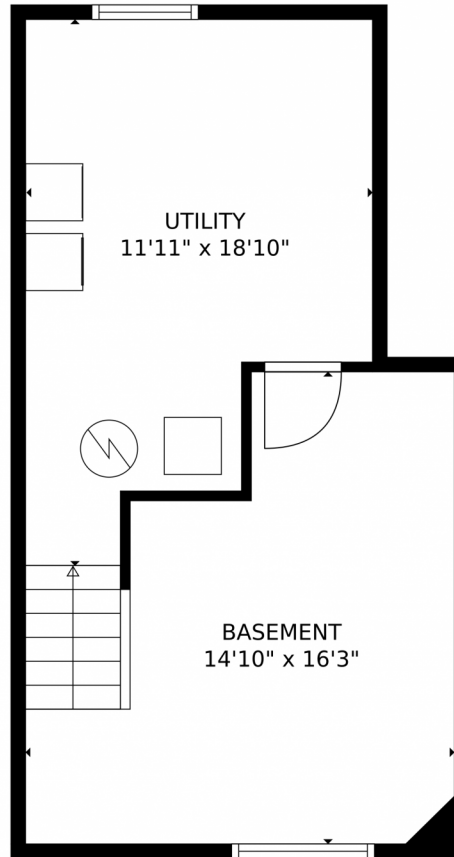


Disclaimer: Sizes and Dimensions are Approximate, Actual May Vary.



**Greg Dach**  
303-525-9006  
gregdach@remax.net





**TOTAL: 1320 sq. ft**  
Below Ground: 203 sq. ft, FLOOR 2: 557 sq. ft, FLOOR 3: 560 sq. ft  
EXCLUDED AREAS: UTILITY: 183 sq. ft, GARAGE: 374 sq. ft, DECK: 510 sq. ft,  
PORCH: 58 sq. ft, EMBEDDEDWINDOW: 5 sq. ft, OPEN TO BELOW: 181 sq. ft  
MEASUREMENTS CALCULATED BY V1Photos.com ARE DEEMED HIGHLY RELIABLE BUT NOT GUARANTEED.



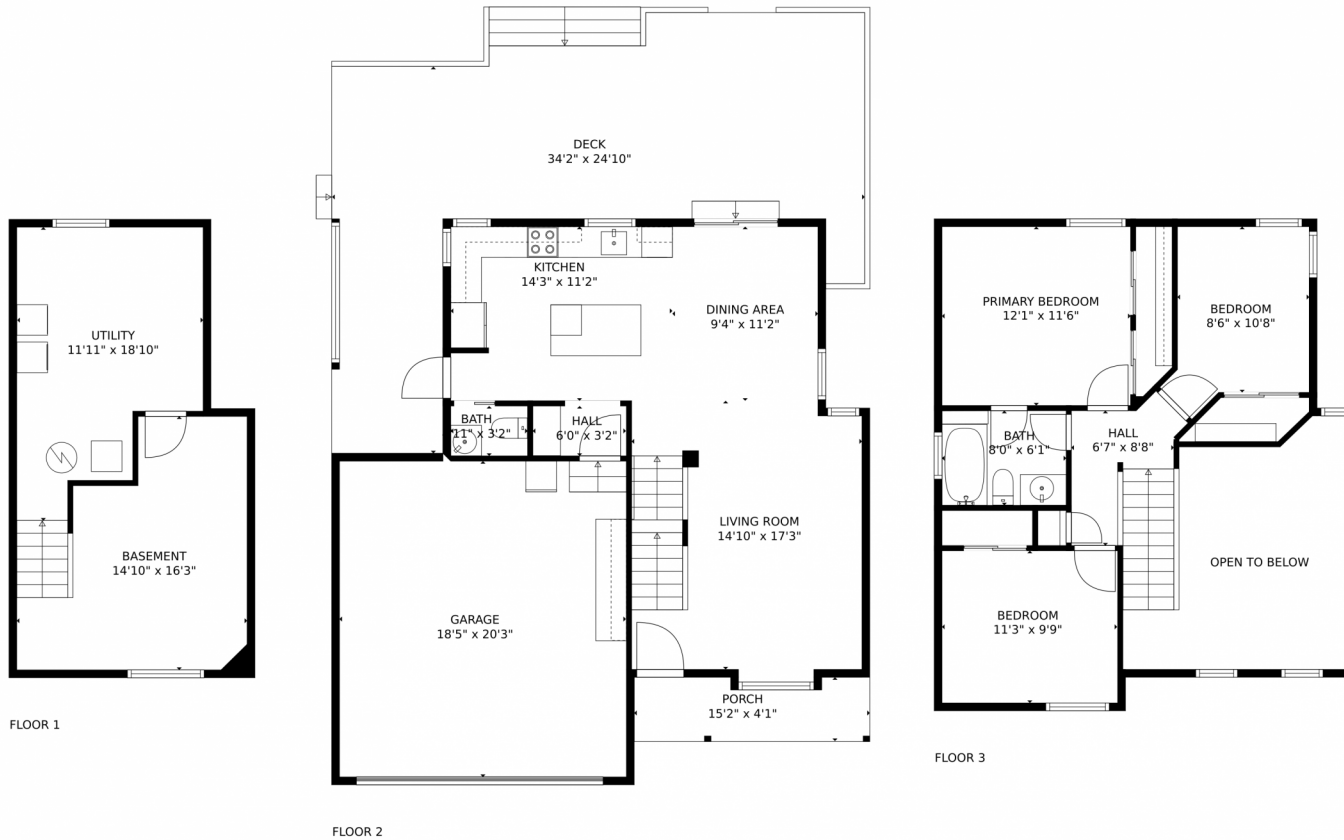
Disclaimer: Sizes and Dimensions are Approximate, Actual May Vary.



**Greg Dach**  
303-525-9006  
gregdach@remax.net



# 11411 West Lake Drive, Littleton, CO 80127 – All Levels



**TOTAL: 1320 sq. ft**

Below Ground: 203 sq. ft, FLOOR 2: 557 sq. ft, FLOOR 3: 560 sq. ft  
EXCLUDED AREAS: UTILITY: 183 sq. ft, GARAGE: 374 sq. ft, DECK: 510 sq. ft,  
PORCH: 58 sq. ft, EMBEDDED WINDOW: 5 sq. ft, OPEN TO BELOW: 181 sq. ft

MEASUREMENTS CALCULATED BY V1Photos.com ARE DEEMED HIGHLY RELIABLE BUT NOT GUARANTEED.



Disclaimer: Sizes and Dimensions are Approximate, Actual May Vary.



**Greg Dach**  
303-525-9006  
gregdach@remax.net



Scan code  
for more  
property  
details

