









7036 West 83rd Way, Arvada, CO 80003 - All Levels



 Single Family  2730 SQFT  4 Beds  2/1 Baths  2 Car  0.17 Acre

PROPERTY DETAILS

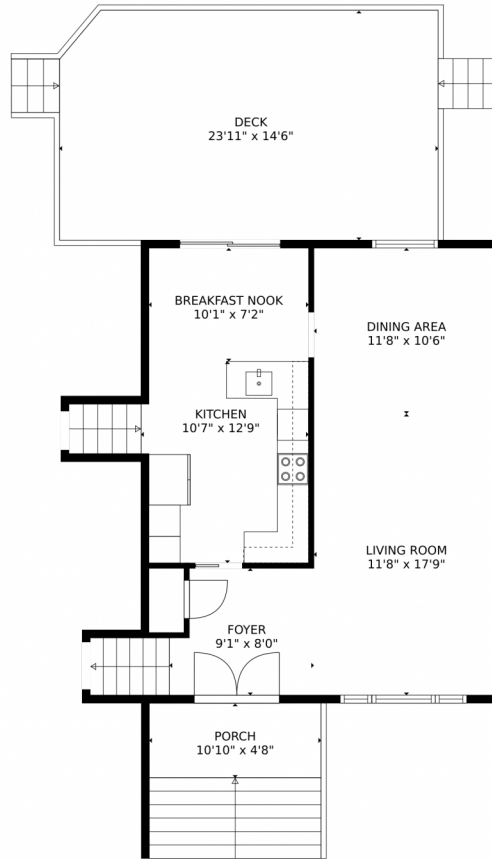
Welcome to your cozy oasis! This home features an open floor plan with lots of natural light and plenty of living space. The newly remodeled kitchen is equipped with top of the line appliances and opens up to a spacious deck, perfect for entertaining. Located within walking distance to the golf course, Rec center, tennis courts, and Lake Arbor, this home has it all! Stay tuned for photos, coming soon.



Renee Ambrose
303-704-6289
reneeambrose@kw.com



7036 W 83rd Way, Arvada, CO 80003 – Main Level



TOTAL: 2425 sq. ft
Below Ground: 496 sq. ft, FLOOR 2: 540 sq. ft, FLOOR 3: 652 sq. ft, FLOOR 4: 737 sq. ft
EXCLUDED AREAS: ELECTRICAL ROOM: 113 sq. ft, GARAGE: 432 sq. ft, FIREPLACE: 6 sq. ft,
DECK: 343 sq. ft, PORCH: 51 sq. ft

MEASUREMENTS CALCULATED BY V1Photos.com ARE DEEMED HIGHLY RELIABLE BUT NOT GUARANTEED.



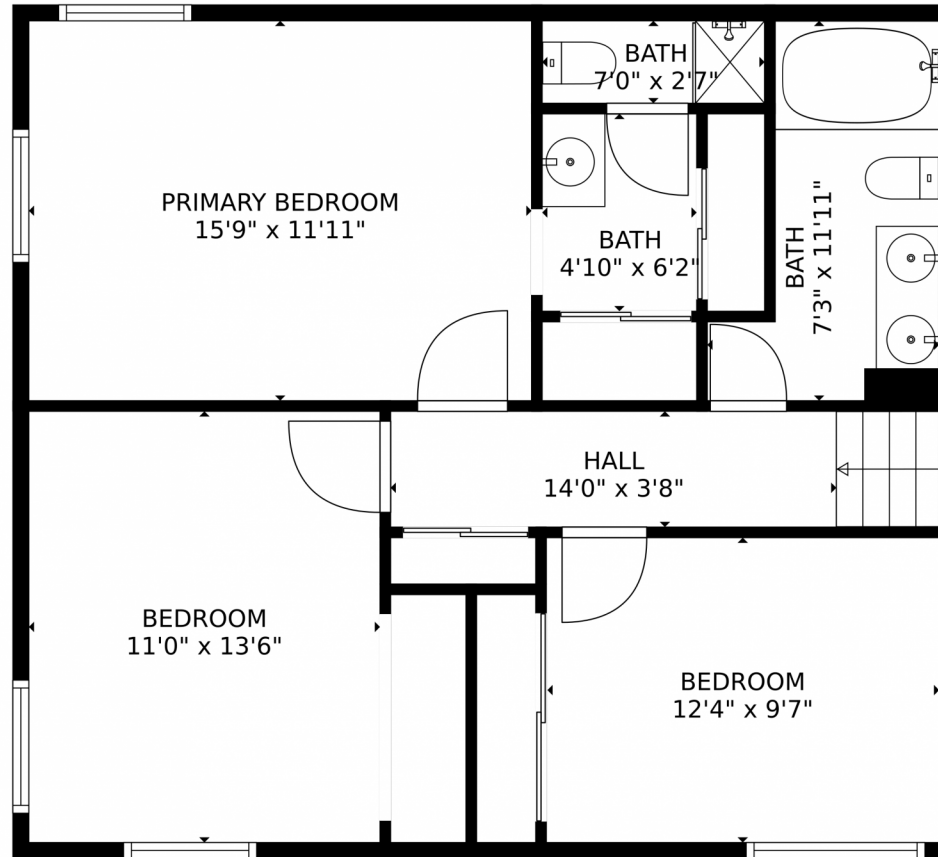
Disclaimer: Sizes and Dimensions are Approximate, Actual May Vary.



Renee Ambrose
303-704-6289
reneeambrose@kw.com



7036 W 83rd Way, Arvada, CO 80003 – Upper Level]



TOTAL: 2425 sq. ft
Below Ground: 496 sq. ft, FLOOR 2: 540 sq. ft, FLOOR 3: 652 sq. ft, FLOOR 4: 737 sq. ft
EXCLUDED AREAS: ELECTRICAL ROOM: 113 sq. ft, GARAGE: 432 sq. ft, FIREPLACE: 6 sq. ft,
DECK: 343 sq. ft, PORCH: 51 sq. ft

MEASUREMENTS CALCULATED BY V1Photos.com ARE DEEMED HIGHLY RELIABLE BUT NOT GUARANTEED.

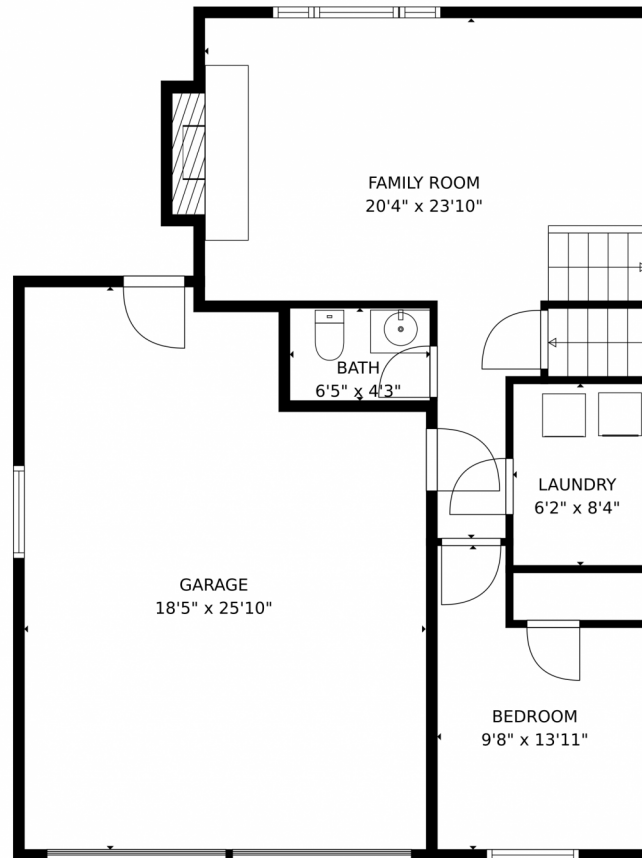


Disclaimer: Sizes and Dimensions are Approximate, Actual May Vary.



Renee Ambrose
303-704-6289
reneeambrose@kw.com





TOTAL: 2425 sq. ft
Below Ground: 496 sq. ft, FLOOR 2: 540 sq. ft, FLOOR 3: 652 sq. ft, FLOOR 4: 737 sq. ft
EXCLUDED AREAS: ELECTRICAL ROOM: 113 sq. ft, GARAGE: 432 sq. ft, FIREPLACE: 6 sq. ft,
DECK: 343 sq. ft, PORCH: 51 sq. ft

MEASUREMENTS CALCULATED BY V1Photos.com ARE DEEMED HIGHLY RELIABLE BUT NOT GUARANTEED.



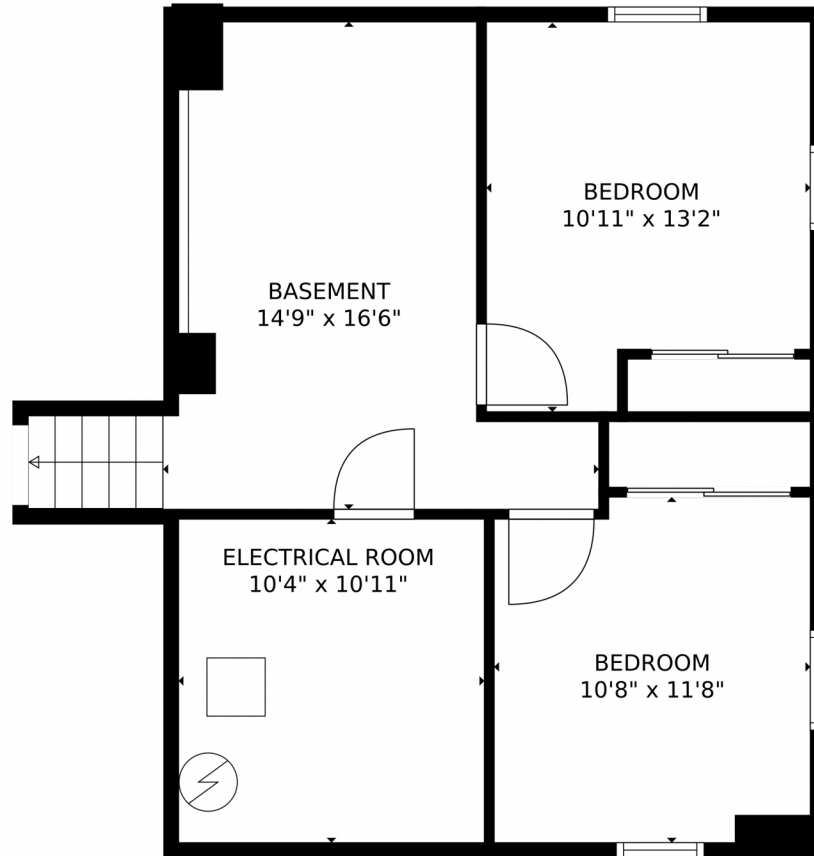
Disclaimer: Sizes and Dimensions are Approximate, Actual May Vary.



Renee Ambrose
303-704-6289
reneeambrose@kw.com



7036 W 83rd Way, Arvada, CO 80003 – Lower Level



TOTAL: 2425 sq. ft
Below Ground: 496 sq. ft, FLOOR 2: 540 sq. ft, FLOOR 3: 652 sq. ft, FLOOR 4: 737 sq. ft
EXCLUDED AREAS: ELECTRICAL ROOM: 113 sq. ft, GARAGE: 432 sq. ft, FIREPLACE: 6 sq. ft,
DECK: 343 sq. ft, PORCH: 51 sq. ft

MEASUREMENTS CALCULATED BY V1Photos.com ARE DEEMED HIGHLY RELIABLE BUT NOT GUARANTEED.



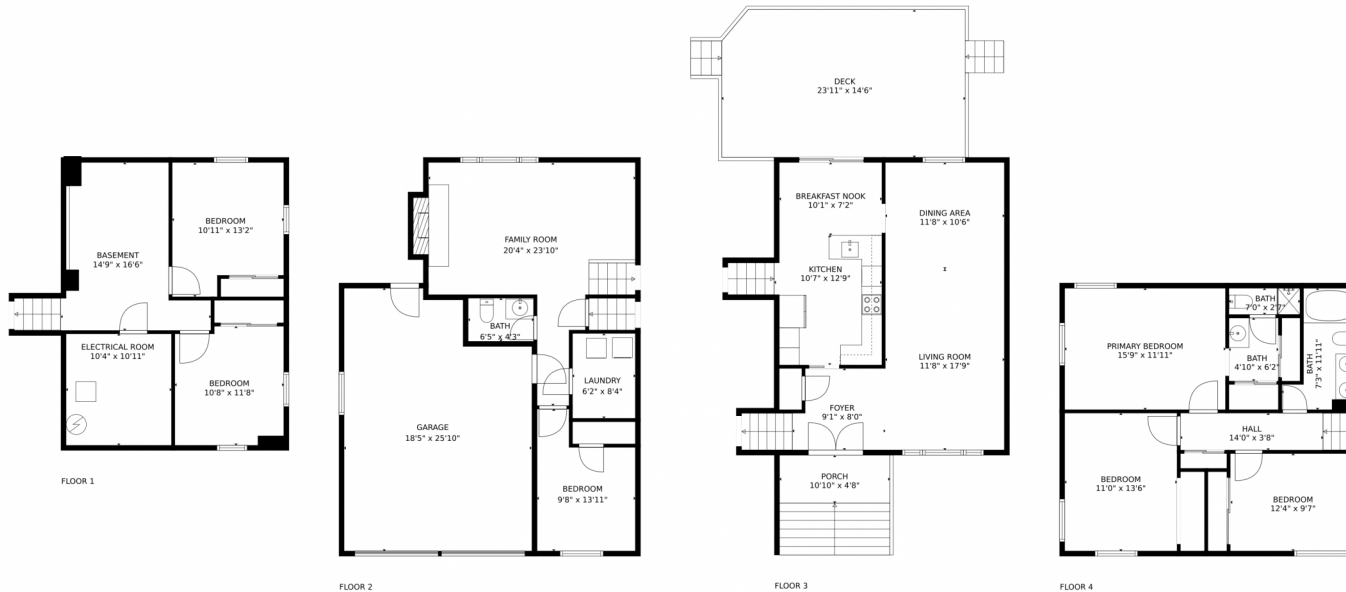
Disclaimer: Sizes and Dimensions are Approximate, Actual May Vary.



Renee Ambrose
303-704-6289
reneeambrose@kw.com



7036 W 83rd Way, Arvada, CO 80003 – All Levels



TOTAL: 2425 sq. ft
Below Ground: 496 sq. ft, FLOOR 2: 540 sq. ft, FLOOR 3: 652 sq. ft, FLOOR 4: 737 sq. ft
EXCLUDED AREAS: ELECTRICAL ROOM: 113 sq. ft, GARAGE: 432 sq. ft, FIREPLACE: 6 sq. ft,
DECK: 343 sq. ft, PORCH: 51 sq. ft

MEASUREMENTS CALCULATED BY V1Photos.COM ARE DEEMED HIGHLY RELIABLE BUT NOT GUARANTEED.



Disclaimer: Sizes and Dimensions are Approximate, Actual May Vary.



Renee Ambrose
303-704-6289
reneeambrose@kw.com

