



3660 West 25th Street 1205
Greeley, CO 80634
COMMUNITY: Longview



Single Family



1300 SQFT



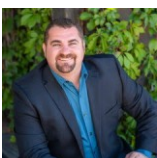
2 Beds



2/1 Baths



2 Car



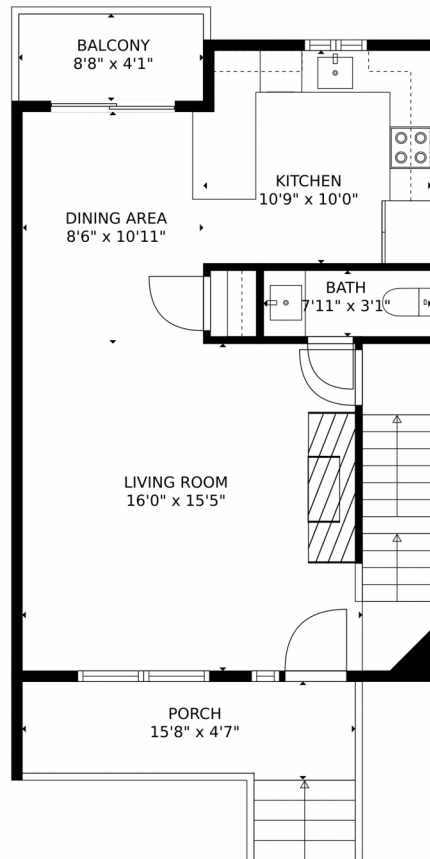
Brad Inhulsen
970-584-4144
brad@searsrealestate.com



Scan code
for more
property
details



3660 West 25th Street 1205, Greeley, CO 80634 – Main Level



TOTAL: 1215 sq. ft
Below Ground: 140 sq. ft, FLOOR 2: 538 sq. ft, FLOOR 3: 537 sq. ft
EXCLUDED AREAS: ELECTRICAL ROOM: 28 sq. ft, GARAGE: 388 sq. ft, PORCH: 69 sq. ft,
BALCONY: 36 sq. ft

MEASUREMENTS CALCULATED BY V1Photos.com ARE DEEMED HIGHLY RELIABLE BUT NOT GUARANTEED.



Disclaimer: Sizes and Dimensions are Approximate, Actual May Vary.



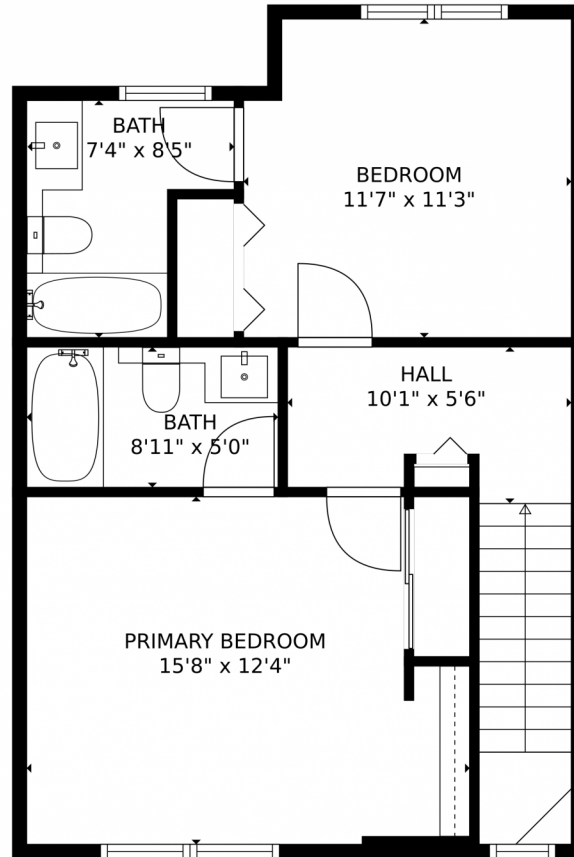
Brad Inhulsen
970-584-4144
brad@searsrealestate.com



Scan code
for more
property
details



3660 West 25th Street 1205, Greeley, CO 80634 – Upper Level



TOTAL: 1215 sq. ft
Below Ground: 140 sq. ft, FLOOR 2: 538 sq. ft, FLOOR 3: 537 sq. ft
EXCLUDED AREAS: ELECTRICAL ROOM: 28 sq. ft, GARAGE: 388 sq. ft, PORCH: 69 sq. ft,
BALCONY: 36 sq. ft

MEASUREMENTS CALCULATED BY V1Photos.com ARE DEEMED HIGHLY RELIABLE BUT NOT GUARANTEED.

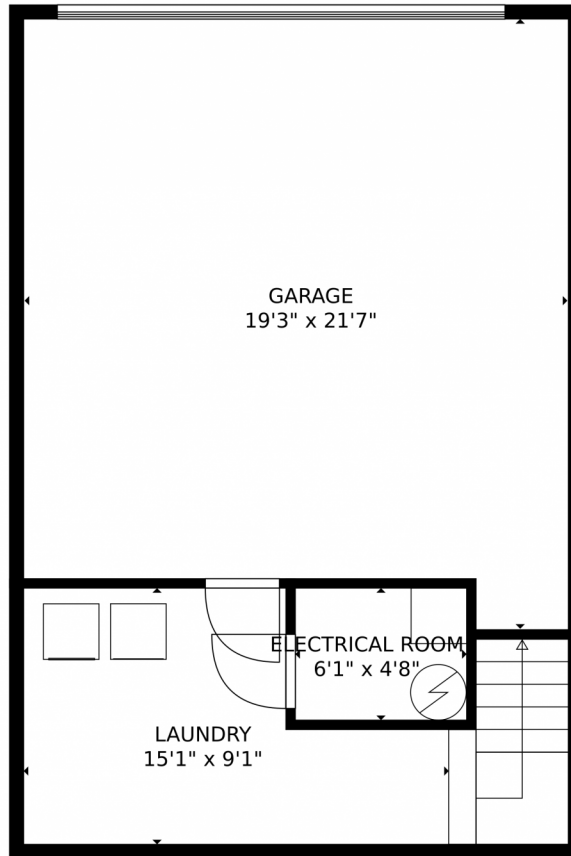


Disclaimer: Sizes and Dimensions are Approximate, Actual May Vary.



Brad Inhulsen
970-584-4144
brad@searsrealestate.com





TOTAL: 1215 sq. ft
Below Ground: 140 sq. ft, FLOOR 2: 538 sq. ft, FLOOR 3: 537 sq. ft
EXCLUDED AREAS: ELECTRICAL ROOM: 28 sq. ft, GARAGE: 388 sq. ft, PORCH: 69 sq. ft,
BALCONY: 36 sq. ft

MEASUREMENTS CALCULATED BY V1Photos.com ARE DEEMED HIGHLY RELIABLE BUT NOT GUARANTEED.



Disclaimer: Sizes and Dimensions are Approximate, Actual May Vary.



Brad Inhulsen
970-584-4144
brad@searsrealestate.com



3660 West 25th Street 1205, Greeley, CO 80634 – All Levels



TOTAL: 1215 sq. ft
Below Ground: 140 sq. ft, FLOOR 2: 538 sq. ft, FLOOR 3: 537 sq. ft
EXCLUDED AREAS: ELECTRICAL ROOM: 28 sq. ft, GARAGE: 388 sq. ft, PORCH: 69 sq. ft,
BALCONY: 36 sq. ft

MEASUREMENTS CALCULATED BY V1Photos.com ARE DEEMED HIGHLY RELIABLE BUT NOT GUARANTEED.



Disclaimer: Sizes and Dimensions are Approximate, Actual May Vary.



Brad Inhulsen
970-584-4144
brad@searsrealestate.com



Scan code
for more
property
details

