





 Single Family

 3306 SQFT

 3 Beds

 2 Baths

 3 Car

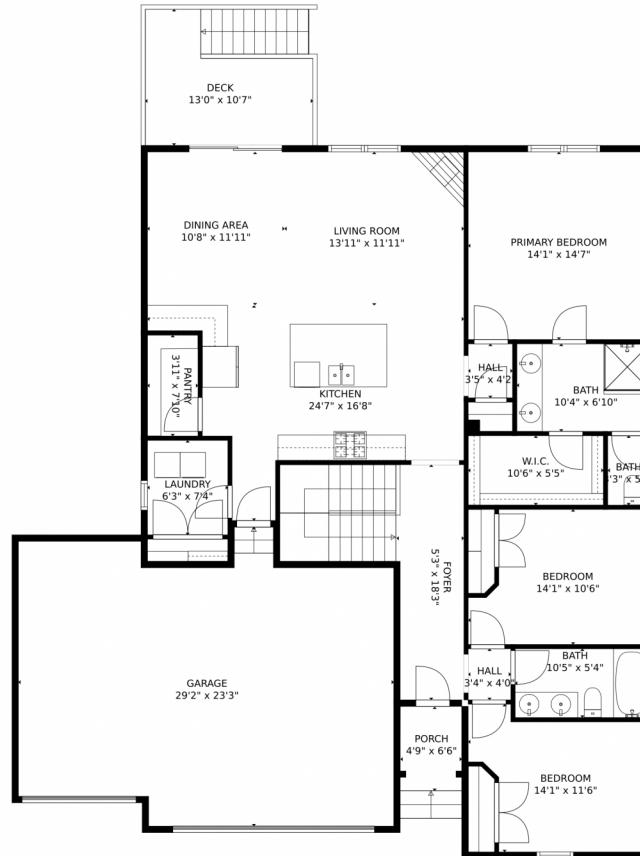
 0.17 Acre



**Alexis Foster**  
970-310-6999  
alexisfoster@windermere.com



# 301 Capitol Reef Street, Berthoud, CO 80513 – Main Level



**TOTAL: 1714 sq. ft**  
Below Ground: 114 sq. ft, FLOOR 2: 1600 sq. ft  
EXCLUDED AREAS: BASEMENT: 1485 sq. ft, GARAGE: 590 sq. ft, PORCH: 42 sq. ft,  
DECK: 134 sq. ft

MEASUREMENTS CALCULATED BY V1Photos.com ARE DEEMED HIGHLY RELIABLE BUT NOT GUARANTEED.



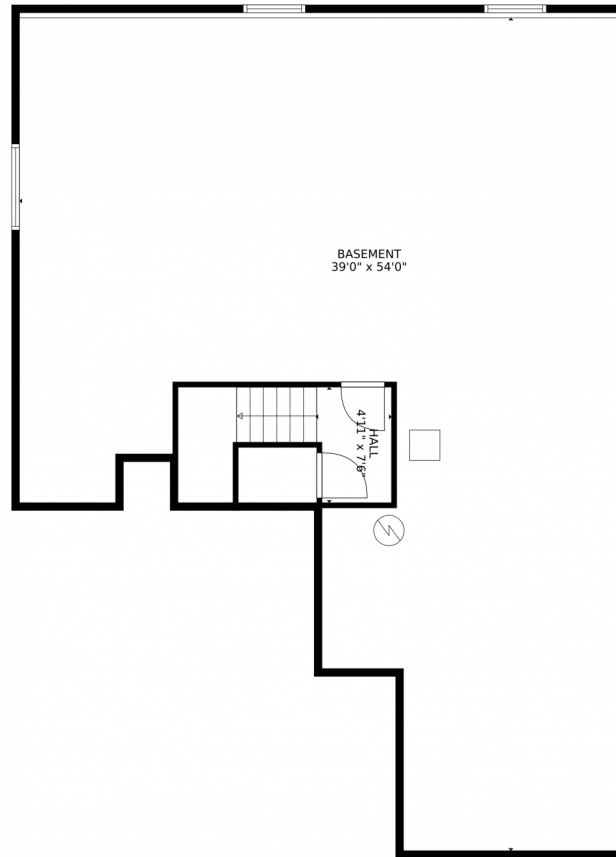
Disclaimer: Sizes and Dimensions are Approximate, Actual May Vary.



Alexis Foster  
970-310-6999  
alexisfoster@windermere.com



# 301 Capitol Reef Street, Berthoud, CO 80513 – Lower Level



**TOTAL: 1714 sq. ft**  
Below Ground: 114 sq. ft, FLOOR 2: 1600 sq. ft  
EXCLUDED AREAS: BASEMENT: 1485 sq. ft, GARAGE: 590 sq. ft, PORCH: 42 sq. ft,  
DECK: 134 sq. ft

MEASUREMENTS CALCULATED BY V1Photos.com ARE DEEMED HIGHLY RELIABLE BUT NOT GUARANTEED.



Disclaimer: Sizes and Dimensions are Approximate, Actual May Vary.



Alexis Foster  
970-310-6999  
alexisfoster@windermere.com



# 301 Capitol Reef Street, Berthoud, CO 80513 – All Levels



**TOTAL: 1714 sq. ft**  
Below Ground: 114 sq. ft, FLOOR 2: 1600 sq. ft  
EXCLUDED AREAS: BASEMENT: 1485 sq. ft, GARAGE: 590 sq. ft, PORCH: 42 sq. ft,  
DECK: 134 sq. ft

MEASUREMENTS CALCULATED BY V1Photos.com ARE DEEMED HIGHLY RELIABLE BUT NOT GUARANTEED.



Disclaimer: Sizes and Dimensions are Approximate, Actual May Vary.



Alexis Foster  
970-310-6999  
alexisfoster@windermere.com

