




24648 East Wyoming Place, Aurora, CO 80018 - Main Level



 Single Family

 1582 SQFT

 2 Beds

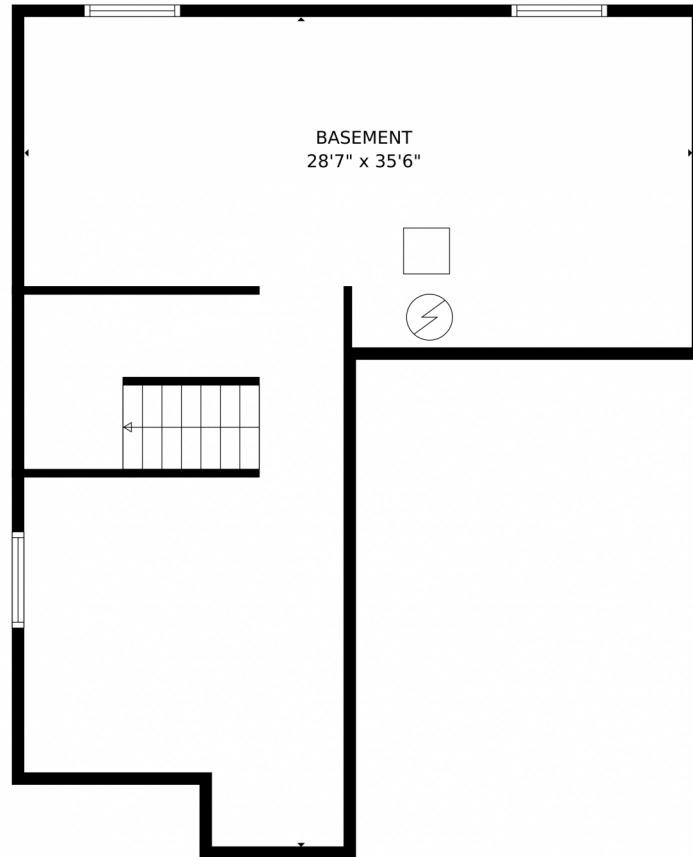
 2/1 Baths



**Taylor Haas**  
 303-665-7368  
 taylorh@coloradorpm.com  
<https://www.coloradorpm.com/available-rental-properties-denver>



24648 East Wyoming Place, Aurora, CO 80018 – Lower Level



**TOTAL: 1625 sq. ft**  
Below Ground: 0 sq. ft, FLOOR 2: 749 sq. ft, FLOOR 3: 876 sq. ft  
EXCLUDED AREAS: BASEMENT: 674 sq. ft, PORCH: 85 sq. ft, PATIO: 52 sq. ft,  
GARAGE: 478 sq. ft, OPEN TO BELOW: 206 sq. ft  
MEASUREMENTS CALCULATED BY V1Photos.com ARE DEEMED HIGHLY RELIABLE BUT NOT GUARANTEED.



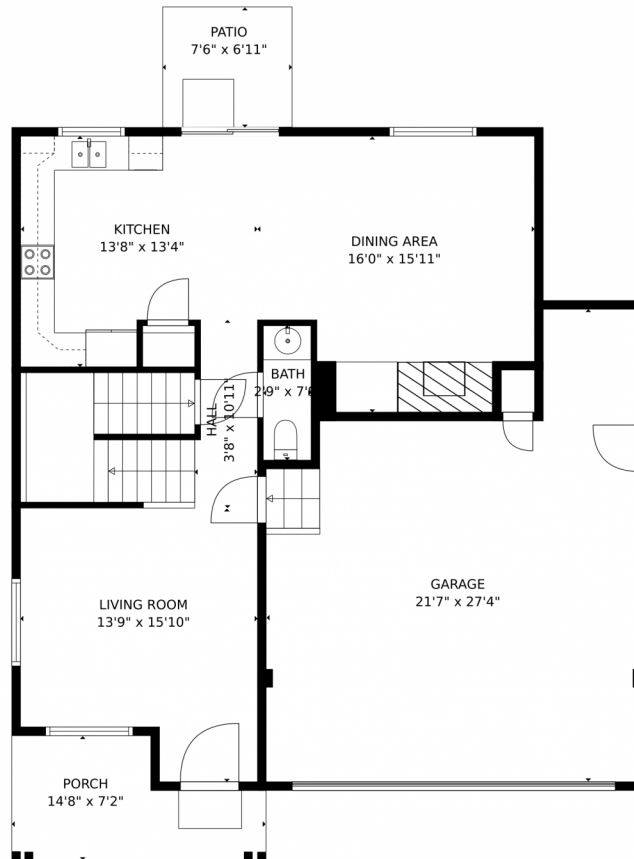
Disclaimer: Sizes and Dimensions are Approximate, Actual May Vary.



**Taylor Haas**  
303-665-7368  
taylorh@coloradorpm.com  
<https://www.coloradorpm.com/available-rental-properties-denver>



# 24648 East Wyoming Place, Aurora, CO 80018 – Main Level



**TOTAL: 1625 sq. ft**  
Below Ground: 0 sq. ft, FLOOR 2: 749 sq. ft, FLOOR 3: 876 sq. ft  
EXCLUDED AREAS: BASEMENT: 674 sq. ft, PORCH: 85 sq. ft, PATIO: 52 sq. ft,  
GARAGE: 478 sq. ft, OPEN TO BELOW: 206 sq. ft  
MEASUREMENTS CALCULATED BY V1Photos.com ARE DEEMED HIGHLY RELIABLE BUT NOT GUARANTEED.



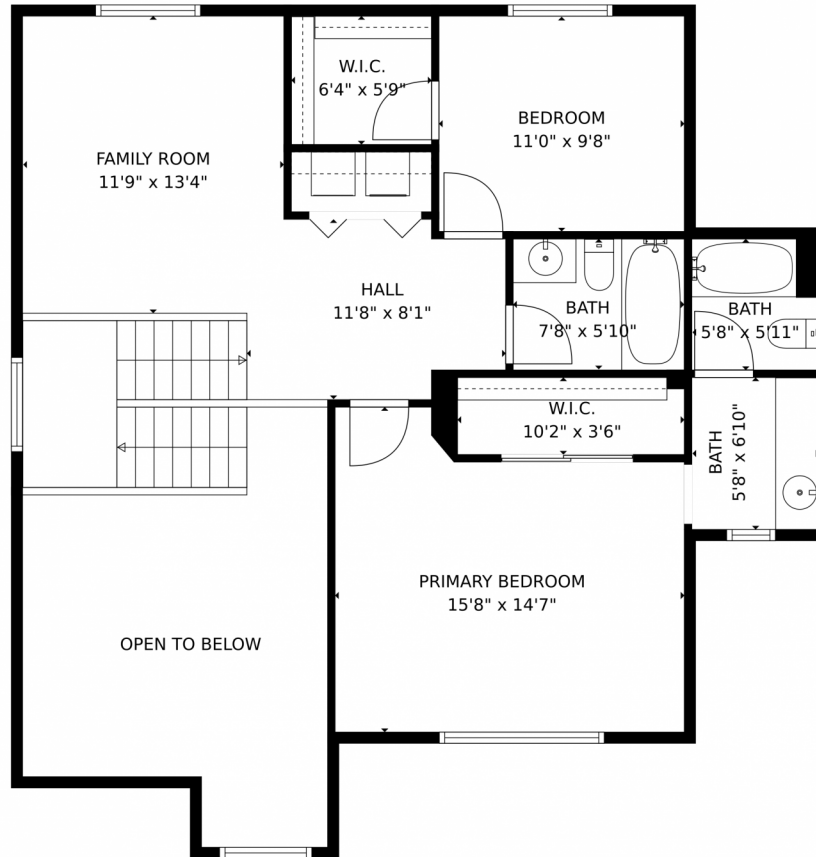
Disclaimer: Sizes and Dimensions are Approximate, Actual May Vary.



**Taylor Haas**  
303-665-7368  
taylorh@coloradorpm.com  
<https://www.coloradorpm.com/available-rental-properties-denver>



# 24648 East Wyoming Place, Aurora, CO 80018 – Upper Level



**TOTAL: 1625 sq. ft**  
Below Ground: 0 sq. ft, FLOOR 2: 749 sq. ft, FLOOR 3: 876 sq. ft  
EXCLUDED AREAS: BASEMENT: 674 sq. ft, PORCH: 85 sq. ft, PATIO: 52 sq. ft,  
GARAGE: 478 sq. ft, OPEN TO BELOW: 206 sq. ft  
MEASUREMENTS CALCULATED BY V1Photos.com ARE DEEMED HIGHLY RELIABLE BUT NOT GUARANTEED.



Disclaimer: Sizes and Dimensions are Approximate, Actual May Vary.



**Taylor Haas**  
303-665-7368  
taylorh@coloradorpm.com  
<https://www.coloradorpm.com/available-rental-properties-denver>



Scan code  
for more  
property  
details



# 24648 East Wyoming Place, Aurora, CO 80018 – All Levels



**TOTAL: 1625 sq. ft**  
Below Ground: 0 sq. ft, FLOOR 2: 749 sq. ft, FLOOR 3: 876 sq. ft  
EXCLUDED AREAS: BASEMENT: 674 sq. ft, PORCH: 85 sq. ft, PATIO: 52 sq. ft,  
GARAGE: 478 sq. ft, OPEN TO BELOW: 206 sq. ft

MEASUREMENTS CALCULATED BY V1Photos.com ARE DEEMED HIGHLY RELIABLE BUT NOT GUARANTEED.



Disclaimer: Sizes and Dimensions are Approximate, Actual May Vary.



**Taylor Haas**  
303-665-7368  
taylorh@coloradorpm.com  
<https://www.coloradorpm.com/available-rental-properties-denver>

