



420 S Dale ct
denver, CO 80219
COMMUNITY: marlee



Single Family



930 SQFT



2 Beds



1 Baths



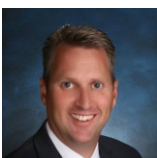
1 Car



0.17 Acre

PROPERTY DETAILS

Updated full brick ranch with a rare attached garage. This home features a remodeled kitchen with new cabinets, granite counters, tile backsplash and stainless appliances. There is an updated bath with tile surround and floors, hardwood floors, newer windows, and recessed canned lighting throughout. The home is nestled on a large low maintenance lot with easy access to downtown. An amazing opportunity at this price.



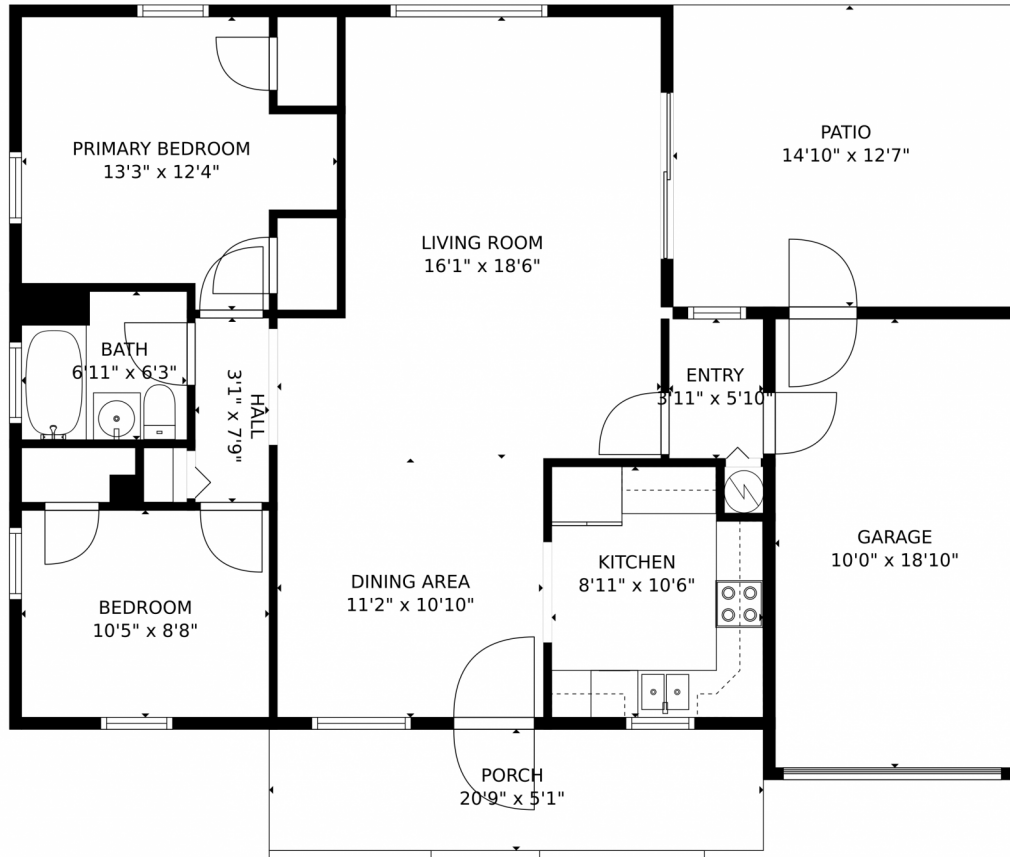
Greg Dach
303-525-9006
gregdach@remax.net



Scan code
for more
property
details



420 S Dale ct, denver, CO 80219 – Main Level



TOTAL: 861 sq. ft
FLOOR 1: 861 sq. ft
EXCLUDED AREAS: GARAGE: 189 sq. ft, PATIO: 188 sq. ft, PORCH: 105 sq. ft
MEASUREMENTS CALCULATED BY V1Photos.com ARE DEEMED HIGHLY RELIABLE BUT NOT GUARANTEED.



Disclaimer: Sizes and Dimensions are Approximate, Actual May Vary.



Greg Dach
303-525-9006
gregdach@remax.net

