





1363 Elbridge Drive, Elizabeth, CO 80107 - Lower Level



 Single Family

 2426 SQFT

 4 Beds

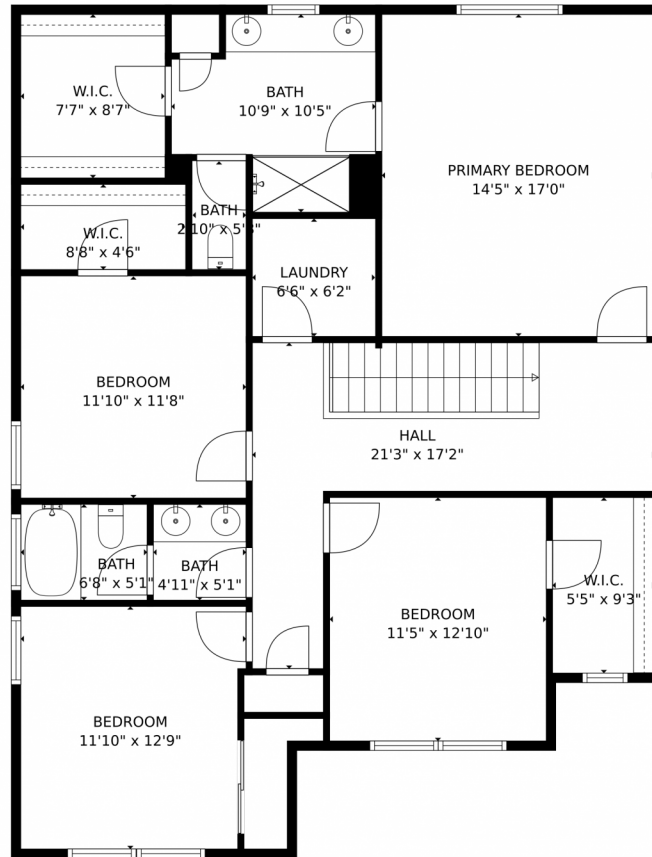
 2/1 Baths



Taylor Haas
 303-665-7368
 taylorh@coloradorpm.com
<https://www.coloradorpm.com/available-rental-properties-denver>



1363 Elbridge Drive, Elizabeth, CO 80107 – Upper Level



TOTAL: 2318 sq. ft
Below Ground: 0 sq. ft, FLOOR 2: 979 sq. ft, FLOOR 3: 1339 sq. ft
EXCLUDED AREAS: BASEMENT: 896 sq. ft, PATIO: 219 sq. ft, GARAGE: 608 sq. ft,
DECK: 192 sq. ft, PORCH: 90 sq. ft

MEASUREMENTS CALCULATED BY V1Photos.com ARE DEEMED HIGHLY RELIABLE BUT NOT GUARANTEED.



Disclaimer: Sizes and Dimensions are Approximate, Actual May Vary.



Taylor Haas

303-665-7368

taylorh@coloradorpm.com

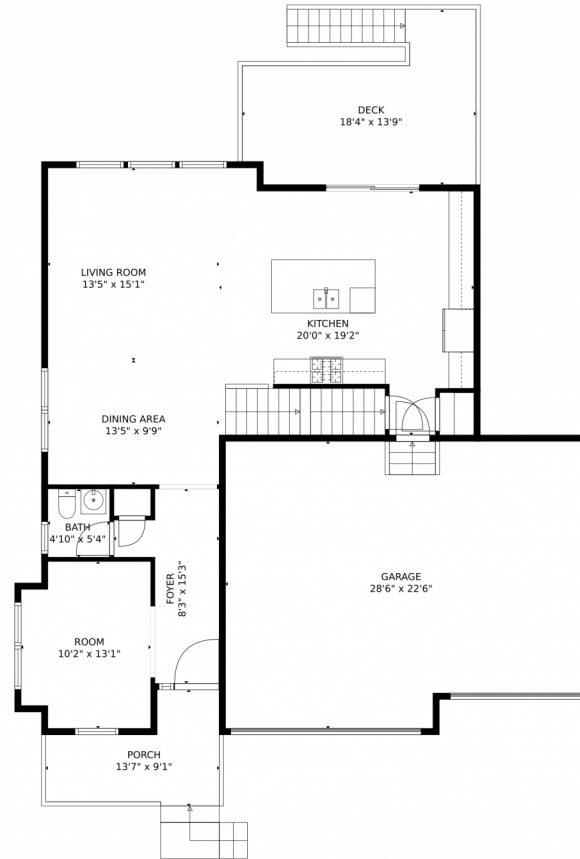
<https://www.coloradorpm.com/available-rental-properties-denver>



Scan code
for more
property
details



1363 Elbridge Drive, Elizabeth, CO 80107 – Main Level



TOTAL: 2318 sq. ft
Below Ground: 0 sq. ft, FLOOR 2: 979 sq. ft, FLOOR 3: 1339 sq. ft
EXCLUDED AREAS: BASEMENT: 896 sq. ft, PATIO: 219 sq. ft, GARAGE: 608 sq. ft,
DECK: 192 sq. ft, PORCH: 90 sq. ft

MEASUREMENTS CALCULATED BY V1Photos.com ARE DEEMED HIGHLY RELIABLE BUT NOT GUARANTEED.



Disclaimer: Sizes and Dimensions are Approximate, Actual May Vary.



Taylor Haas

303-665-7368

taylorh@coloradorm.com

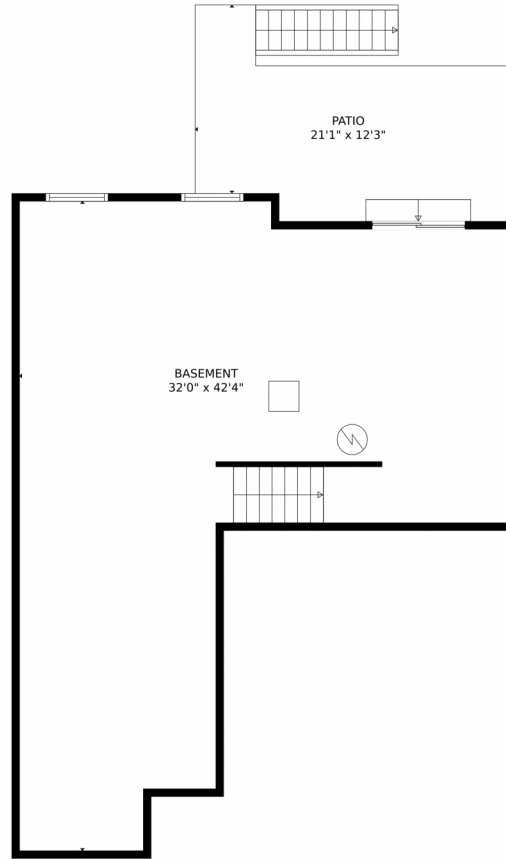
<https://www.coloradorm.com/available-rental-properties-denver>



Scan code
for more
property
details



1363 Elbridge Drive, Elizabeth, CO 80107 – Lower Level



TOTAL: 2318 sq. ft
Below Ground: 0 sq. ft, FLOOR 2: 979 sq. ft, FLOOR 3: 1339 sq. ft
EXCLUDED AREAS: BASEMENT: 896 sq. ft, PATIO: 219 sq. ft, GARAGE: 608 sq. ft,
DECK: 192 sq. ft, PORCH: 90 sq. ft

MEASUREMENTS CALCULATED BY V1Photos.com ARE DEEMED HIGHLY RELIABLE BUT NOT GUARANTEED.



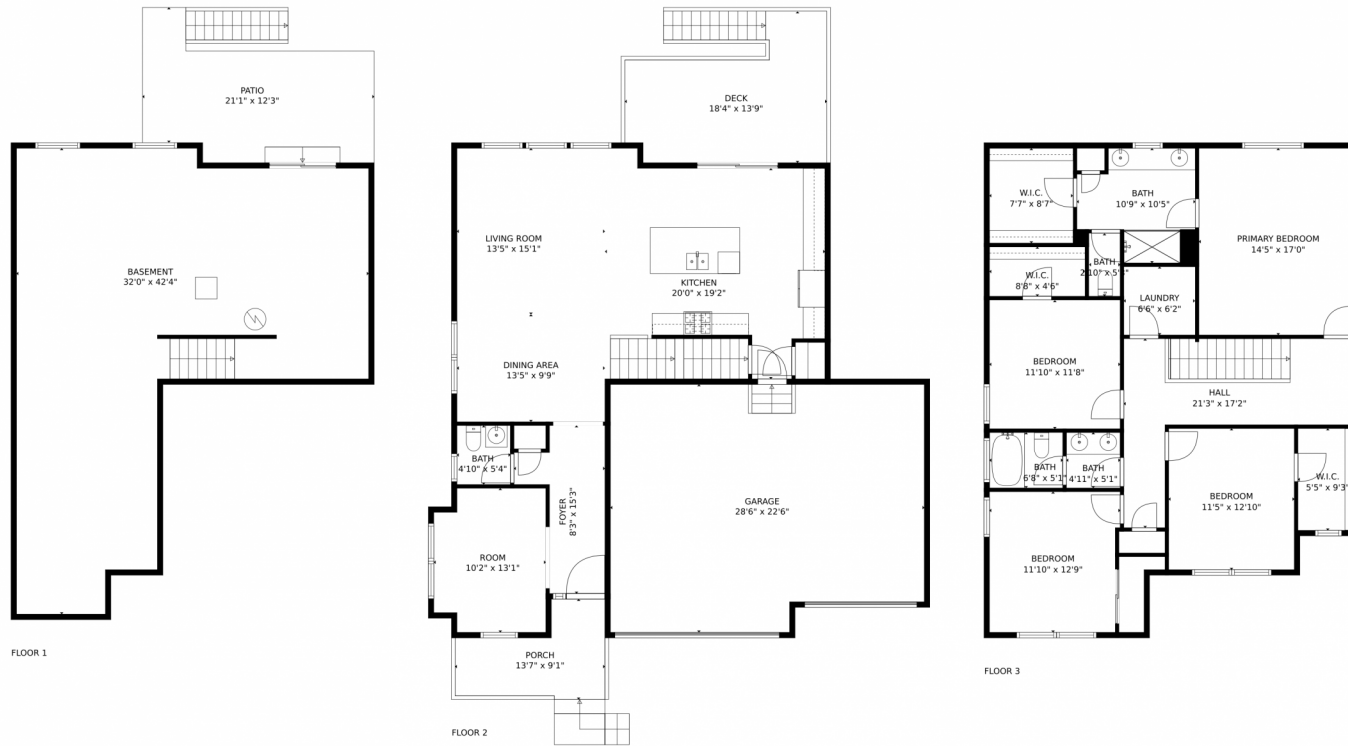
Disclaimer: Sizes and Dimensions are Approximate, Actual May Vary.



Taylor Haas
303-665-7368
taylorh@coloradorpm.com
<https://www.coloradorpm.com/available-rental-properties-denver>



1363 Elbridge Drive, Elizabeth, CO 80107 – All Levels



TOTAL: 2318 sq. ft
Below Ground: 0 sq. ft, FLOOR 2: 979 sq. ft, FLOOR 3: 1339 sq. ft
EXCLUDED AREAS: BASEMENT: 896 sq. ft, PATIO: 219 sq. ft, GARAGE: 608 sq. ft,
DECK: 192 sq. ft, PORCH: 90 sq. ft

MEASUREMENTS CALCULATED BY V1Photos.com ARE DEEMED HIGHLY RELIABLE BUT NOT GUARANTEED.



Disclaimer: Sizes and Dimensions are Approximate, Actual May Vary.



Taylor Haas

303-665-7368

taylorh@coloradorpm.com

<https://www.coloradorpm.com/available-rental-properties-denver>



Scan code
for more
property
details

